

SECTION D

FIXTURES, RACES AND PRIZE MONEY

TABLE 1

Fixtures

A fixture is defined as one day's racing at one course.

TABLE 2

Field Sizes - Flat

The number of Runners (1-5, 6-10, 11-15, 16-20 and 21+) in the number of races shown monthly for Flat races. The number of Walkovers (if any) is shown separately.

TABLE 3

Field Sizes - Jump

The number of Runners (1-5, 6-10, 11-15, 16-20 and 21+) in the number of races shown monthly for Hurdle Races and National Hunt Flat Races, and for Steeple Chases. The number of Walkovers (if any) is shown separately.

TABLE 4

Field Sizes – Flat and Jump

The number of Runners (1-5, 6-10, 11-15, 16-20 and 21+) in the number of races shown as a total for each of the last 5 years for Flat races and Jump races. A separate table for Hurdle Races and National Hunt Flat Races and for Steeple Chases is also shown. The number of Walkovers (if any) is shown separately.

TABLE 5

Flat Racing

Number of Different Horses Which Ran – by Age

An analysis of the number of different horses which ran on the Flat under Rules in each calendar year as 2 years old, 3 years old, 4 years old and over and in total.

Average Number of Runs per Horse that Ran

The number of individual different horses that ran on the Flat divided into the total number of Flat runners for each year.

Number of Different Winners

The number of different horses which won a Flat race under Rules in the calendar year.

Number of Races Divided Overnight

The number of different Flat races that were divided under the Orders and Rules of Racing because the number of horses declared to run exceeded the safety factor/maximum figure or field size limit of the race concerned or, in exceptional circumstances, to provide a sufficient number of races on the day due to other races on the card being abandoned.

Number of Horses Balloted Out or Eliminated

The number of horses taken out of a Flat race under the Orders and Rules of Racing because the number left in at the declaration to run stage exceeded the safety factor/maximum figure or field size limit. These figures are for ALL Flat races, including abandoned races, so will not necessarily equate to the total number of eliminations in table D6, which is only for races that actually took place.

Jump Racing**Number of Different Horses Which Ran**

The total number of different horses which ran under Jump Rules in each calendar year.

Average Number of Runs per Horse that Ran

The number of individual different horses that ran under Jump Rules divided into the total number of Jump runners for each calendar year.

Number of Different Winners

The number of different horses that won a Jump race under Rules in the calendar year.

Number of Races Divided Overnight

The number of different Jump races that were divided under the Orders and Rules of Racing because the number of horses declared to run exceeded the safety factor/maximum figure or field size limit of the race concerned or, in exceptional circumstances, to provide a sufficient number of races on the day due to other races on the card being abandoned.

Number of Horses Balloted Out or Eliminated

The number of horses taken out of a Jump race under the Orders and Rules of Racing because the number left in at the declaration to run stage exceeded the safety factor/maximum figure or field size limit. These figures are for ALL Jump races, including abandoned races, so will not necessarily equate to the total number of eliminations in tables D7, D8 and D9, which are only for races that actually took place.

TABLE 6**Races, Entries, Runners, Eliminations and Prize Money by Type of Race – Flat**

An analysis of the number of Entries, Runners and Eliminations by types of Handicaps and types of Weight-for-Age races, together with Prize Money value and percentage of total Flat Prize Money for each type.

TABLE 7

Races, Entries, Runners, Eliminations and Prize Money by Type of Race – Jump

An analysis of the number of Entries, Runners and Eliminations by types of Handicaps and types of Weight-for-Age races, together with Prize Money value and percentage of total Jump Prize Money for each type.

TABLE 8

Races, Entries, Runners, Eliminations and Prize Money by Distance of Race – Hurdle Races and National Hunt Flat Races

An analysis of the number of Entries, Runners and Eliminations by Distance of Race in Handicaps and Weight-for-Age races for Hurdle Races and National Hunt Flat Races. Averages per race, together with Prize Money value and percentage of total Prize Money for Hurdle Races and National Hunt Flat Races for each Distance category are shown.

TABLE 9

Races, Entries, Runners, Eliminations and Prize Money by Distance of Race – Steeple Chases

An analysis of the number of Entries, Runners and Eliminations by Distance of Race in Handicaps and Weight-for-Age races for Steeple Chases. Averages per race, together with Prize Money value and percentage of total Prize Money for Steeple Chases for each Distance category are shown.

TABLE 10

Prize Money by Source for Pattern Races – Flat Racing

An analysis by Course of the source of Prize Money for Flat Pattern Races.

TABLE 11

Prize Money by Source

An analysis of the total Prize Money for the last 5 years, broken down by source.

TABLE 12

Comparison of Flat and Jump Prize Money Pools

An analysis of Flat Prize Money, Jump Prize Money and Total Prize Money by source.

TABLE 13

Total Prize Money by Racecourse

A comparison of the number of Fixtures and Prize Money by source for each Racecourse. A separate table is shown for Flat Racing, Jump Racing and All Racing.

TABLE 14

Sponsored Number Cloth Income

A breakdown by Racecourse (Flat, Jump and Total) of the income derived from the sponsoring of number cloths.

TABLE 15

Prize Money Won Abroad by Horses Trained in Great Britain

Win and Place Prize Money won abroad (i.e. not England, Scotland or Wales) by horses trained in Great Britain at the time of running.

Prize Money Won in Great Britain by Horses Trained outside of Great Britain

Win and Place Prize Money won in Great Britain by horses showing a foreign Trainer in the Official Return sent in by the Clerk of the Scales from the Racecourse. The amount taken will be the Penalty Value shown.

TABLE 16

Appearance Money

The amount paid in Appearance Money payments for the last 5 years, under the terms of Order 232 and Instruction J11 of the Orders and Rules of Racing. A breakdown is shown of money paid in respect of Sunday Racing and that paid for races run on other days of the week.

Owners' Premiums

The amount paid in Owners' Premiums for British Bred Horses in accordance with Order 197 and Instruction J20 of the Orders and Rules of Racing. The Owners' Premium Scheme ran from January 1st, 2004 until December 31st, 2006.

Prize Money and Race Statistics

Fixtures

| | 2002 | 2003 | 2004 | 2005 | 2006 |
|---------------------------|-----------|-----------|-------------|-----------|-----------------|
| Flat | | | | | |
| Fixtures Programmed | (a) 691 | (f,g) 726 | (j) 802 | (n) 811 | (p) 842 |
| Fixtures That Took Place | (b) 681 | (h) 720 | (k) 792 | (o) 801 | (q,r) 832 |
| Fixtures Abandoned | 11 | 6 | 18 | 11 | 10 |
| Jump | | | | | |
| Fixtures Programmed | (c) 537 | (i) 559 | 536 | 535 | 546 |
| Fixtures That Took Place | (d,e) 474 | 497 | (l) 504 | 496 | (s,t) 506 |
| Fixtures Abandoned | 64 | 62 | 35 | 39 | 41 |
| Mixed | | | | | |
| Fixtures Programmed | 5 | 3 | 3 | 3 | 3 |
| Fixtures That Took Place | (d,b) 3 | 3 | 3 | 3 | (t) 4 |
| Fixtures Abandoned | 0 | 0 | 0 | 0 | 0 |
| All Racing | | | | | |
| Fixtures Programmed | 1,233 | 1,288 | 1,341 | 1,349 | 1,391 |
| Fixtures That Took Place | 1,158 | 1,220 | (k,l) 1,299 | (o) 1,300 | (q,r,s,t) 1,342 |
| Fixtures Abandoned | 75 | 68 | 53 | 50 | 51 |
| (Of Which Evening) | | | | | |
| Fixtures Programmed | 163 | 197 | (m) 223 | 221 | 229 |
| Fixtures That Took Place | 161 | 194 | 227 | 217 | 226 |
| Fixtures Abandoned | 2 | 3 | 2 | 4 | 3 |

Notes

- (a) 155 All Weather Track fixtures
- (b) 1 Mixed fixture transferred to Flat
- (c) 10 Replacement Jump fixtures
plus 10 Additional Jump Replacement fixtures
- (d) 1 Mixed fixture transferred to Jump
- (e) 1 fixture abandoned then re-programmed
- (f) 153 All Weather Track fixtures
- (g) 3 Additional fixtures
- (h) 1 AWT fixture transferred to turf and
3 turf fixtures transferred to AWT
- (i) 8 Replacement fixtures plus 12 Additional
Replacement fixtures
- (j) 213 All Weather Track fixtures
- (k) 8 Additional Flat fixtures
- (l) 3 Additional Jump fixtures
- (m) 6 Additional Evening fixtures
- (n) 216 All Weather Track fixtures programmed
- (o) 1 Additional AWT Flat fixture
- (p) 297 All Weather Track fixtures
- (q) 2 Additional Flat fixtures
- (r) 2 AWT fixtures cancelled
- (s) 1 additional Jump fixture
- (t) 1 Jump fixture abandoned and replaced by
an additional AWT (Mixed) fixture

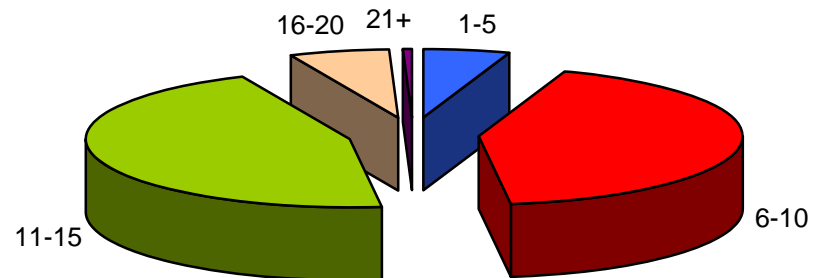
Numbers of Runners in Races

Flat Racing

2006

| Runners | Number of Races | | | | | | | | | | | | Total | % of All Races |
|--------------|-----------------|------------|------------|------------|------------|------------|------------|------------|------------|------------|------------|------------|--------------|----------------|
| | Jan | Feb | Mar | Apr | May | Jun | Jul | Aug | Sep | Oct | Nov | Dec | | |
| 1-5 | 2 | 2 | 9 | 12 | 40 | 34 | 75 | 47 | 19 | 7 | 18 | 30 | 295 | 5.3% |
| 6-10 | 72 | 101 | 98 | 152 | 285 | 327 | 404 | 371 | 185 | 87 | 107 | 178 | 2,367 | 42.6% |
| 11-15 | 171 | 133 | 124 | 195 | 265 | 283 | 234 | 278 | 275 | 253 | 186 | 121 | 2,518 | 45.3% |
| 16-20 | 1 | 1 | 1 | 41 | 49 | 63 | 40 | 48 | 59 | 40 | 5 | 0 | 348 | 6.3% |
| 21+ | 0 | 0 | 2 | 1 | 2 | 7 | 2 | 2 | 8 | 2 | 0 | 0 | 26 | 0.5% |
| TOTAL | 246 | 237 | 234 | 401 | 641 | 714 | 755 | 746 | 546 | 389 | 316 | 329 | 5,554 | 100.0% |

Notes
No Walkovers



Numbers of Runners in Races

Jump Racing

2006

Hurdle Races and National Hunt Flat Races

| Runners | Number of Races | | | | | | | | | | | | Total | % of All Races |
|--------------|-----------------|------------|------------|------------|------------|------------|-----------|------------|-----------|------------|------------|------------|--------------|----------------|
| | Jan | Feb | Mar | Apr | May | Jun | Jul | Aug | Sep | Oct | Nov | Dec | | |
| 1-5 | 5 | 6 | 2 | 6 | 10 | 2 | 7 | 9 | 4 | 7 | 9 | 3 | 70 | 3.5% |
| 6-10 | 68 | 61 | 63 | 47 | 81 | 37 | 38 | 60 | 40 | 69 | 120 | 75 | 759 | 37.8% |
| 11-15 | 110 | 90 | 73 | 89 | 79 | 71 | 41 | 31 | 33 | 87 | 92 | 98 | 894 | 44.6% |
| 16-20 | 27 | 27 | 32 | 34 | 13 | 8 | 5 | 3 | 7 | 20 | 44 | 46 | 266 | 13.3% |
| 21+ | 2 | 0 | 6 | 5 | 1 | 0 | 0 | 0 | 0 | 0 | 1 | 2 | 17 | 0.8% |
| TOTAL | 212 | 184 | 176 | 181 | 184 | 118 | 91 | 103 | 84 | 183 | 266 | 224 | 2,006 | 100.0% |

Steeple Chases

| Runners | Number of Races | | | | | | | | | | | | Total | % of All Races |
|--------------|-----------------|------------|------------|------------|------------|-----------|-----------|-----------|-----------|------------|------------|------------|--------------|----------------|
| | Jan | Feb | Mar | Apr | May | Jun | Jul | Aug | Sep | Oct | Nov | Dec | | |
| 1-5 | 13 | 15 | 20 | 11 | 16 | 3 | 5 | 11 | 2 | 14 | 52 | 32 | 194 | 14.1% |
| 6-10 | 80 | 81 | 69 | 77 | 81 | 29 | 34 | 36 | 31 | 78 | 108 | 102 | 806 | 58.7% |
| 11-15 | 40 | 39 | 29 | 44 | 37 | 31 | 12 | 6 | 4 | 21 | 26 | 34 | 323 | 23.5% |
| 16-20 | 3 | 2 | 7 | 9 | 4 | 2 | 1 | 0 | 1 | 2 | 4 | 4 | 39 | 2.8% |
| 21+ | 0 | 0 | 7 | 4 | 0 | 0 | 0 | 0 | 0 | 0 | 1 | 0 | 12 | 0.9% |
| TOTAL | 136 | 137 | 132 | 145 | 138 | 65 | 52 | 53 | 38 | 115 | 191 | 172 | 1,374 | 100.0% |

Notes

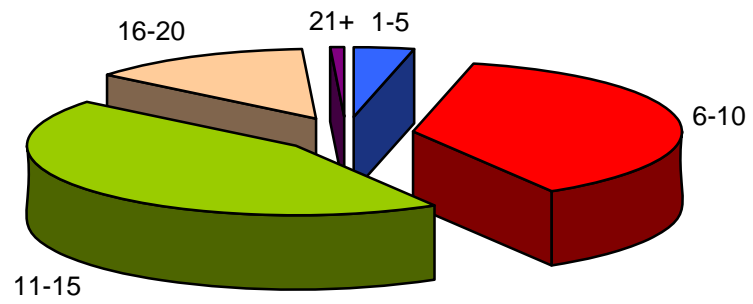
No walkovers

Numbers of Runners in Races

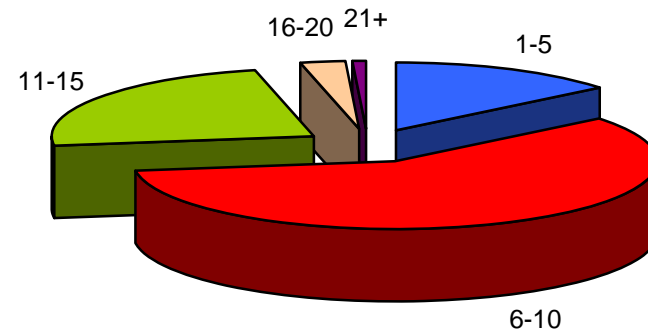
Jump Racing

2006

Hurdle Races and National Hunt Flat Races



Steeple Chases



Analysis of Racing by Size of Field

Flat Races

| Runners | 2002 | | 2003 | | 2004 | | 2005 | | 2006 | |
|--------------|-----------------|----------------|-----------------|----------------|-----------------|----------------|-----------------|----------------|-----------------|----------------|
| | Number of Races | % of All Races | Number of Races | % of All Races | Number of Races | % of All Races | Number of Races | % of All Races | Number of Races | % of All Races |
| 1-5 | 321 | 7.0% | 383 | 8.0% | 257 | 4.9% | 193 | 3.6% | 295 | 5.3% |
| 6-10 | 1,647 | 36.0% | 1,872 | 39.3% | 2,096 | 40.0% | 2,014 | 38.0% | 2,367 | 42.6% |
| 11-15 | 1,737 | 38.0% | 1,744 | 36.6% | 2,226 | 42.5% | 2,451 | 46.2% | 2,518 | 45.3% |
| 16-20 | 743 | 16.3% | 711 | 14.9% | 615 | 11.7% | 611 | 11.5% | 348 | 6.3% |
| 21+ | 124 | 2.7% | 51 | 1.1% | 47 | 0.9% | 32 | 0.6% | 26 | 0.5% |
| TOTAL | 4,572 | 100.0% | 4,761 | 100.0% | 5,241 | 100.0% | 5,301 | 100.0% | 5,554 | 100.0% |

Jump Races

| Runners | 2002 | | 2003 | | 2004 | | 2005 | | 2006 | |
|--------------|--------------------|----------------|--------------------|----------------|--------------------|----------------|-----------------|----------------|-----------------|----------------|
| | Number of Races | % of All Races | Number of Races | % of All Races | Number of Races | % of All Races | Number of Races | % of All Races | Number of Races | % of All Races |
| 1-5 | 427 ⁽¹⁾ | 13.7% | 650 ⁽⁴⁾ | 19.9% | 359 ⁽¹⁾ | 10.8% | 245 | 7.5% | 264 | 7.8% |
| 6-10 | 1,501 | 48.1% | 1,527 | 46.7% | 1,584 | 47.5% | 1,560 | 47.5% | 1,565 | 46.3% |
| 11-15 | 858 | 27.5% | 801 | 24.5% | 1,031 | 30.9% | 1,113 | 33.9% | 1,217 | 36.0% |
| 16-20 | 287 | 9.2% | 256 | 7.8% | 314 | 9.4% | 336 | 10.2% | 305 | 9.0% |
| 21+ | 46 | 1.5% | 33 | 1.0% | 48 | 1.4% | 33 | 1.0% | 29 | 0.9% |
| TOTAL | 3,119 | 100.0% | 3,267 | 100.0% | 3,336 | 100.0% | 3,287 | 100.0% | 3,380 | 100.0% |

Notes

The number of walkovers is shown in brackets.

Analysis of Racing by Size of Field

Hurdle Races and National Hunt Flat Races

| Runners | 2002 | | 2003 | | 2004 | | 2005 | | 2006 | |
|--------------|-----------------|----------------|-----------------|----------------|-----------------|----------------|-----------------|----------------|-----------------|----------------|
| | Number of Races | % of All Races | Number of Races | % of All Races | Number of Races | % of All Races | Number of Races | % of All Races | Number of Races | % of All Races |
| 1-5 | 131 | 7.3% | 201 | 10.6% | 73 | 3.8% | 57 | 2.9% | 70 | 3.5% |
| 6-10 | 734 | 41.0% | 827 | 43.8% | 753 | 39.1% | 724 | 37.3% | 759 | 37.8% |
| 11-15 | 638 | 35.7% | 616 | 32.6% | 780 | 40.5% | 849 | 43.7% | 894 | 44.6% |
| 16-20 | 249 | 13.9% | 222 | 11.7% | 280 | 14.5% | 287 | 14.8% | 266 | 13.3% |
| 21+ | 37 | 2.1% | 24 | 1.3% | 40 | 2.1% | 25 | 1.3% | 17 | 0.8% |
| TOTAL | 1,789 | 100.0% | 1,890 | 100.0% | 1,926 | 100.0% | 1,942 | 100.0% | 2,006 | 100.0% |

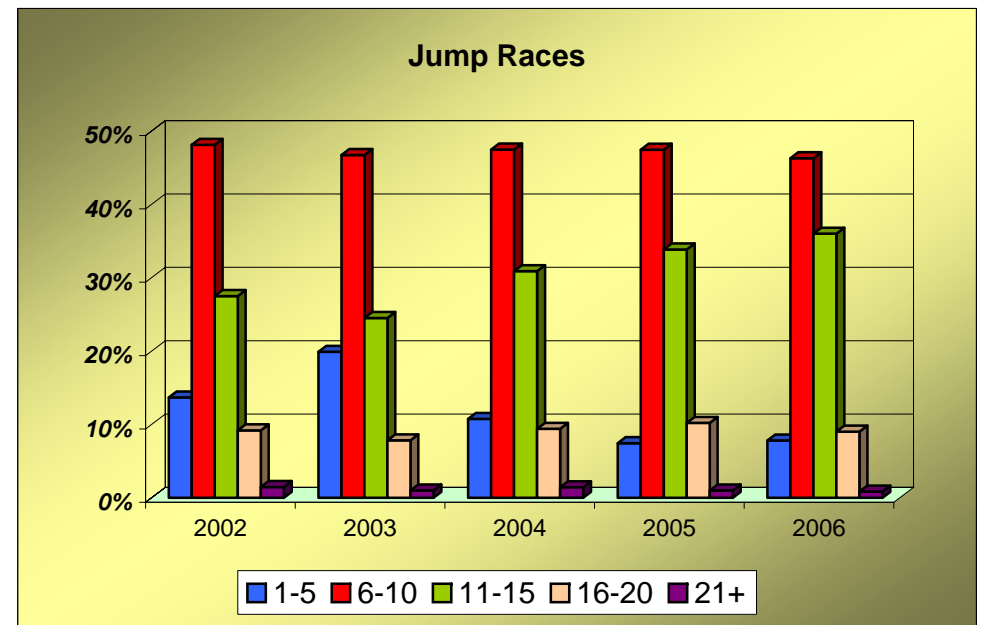
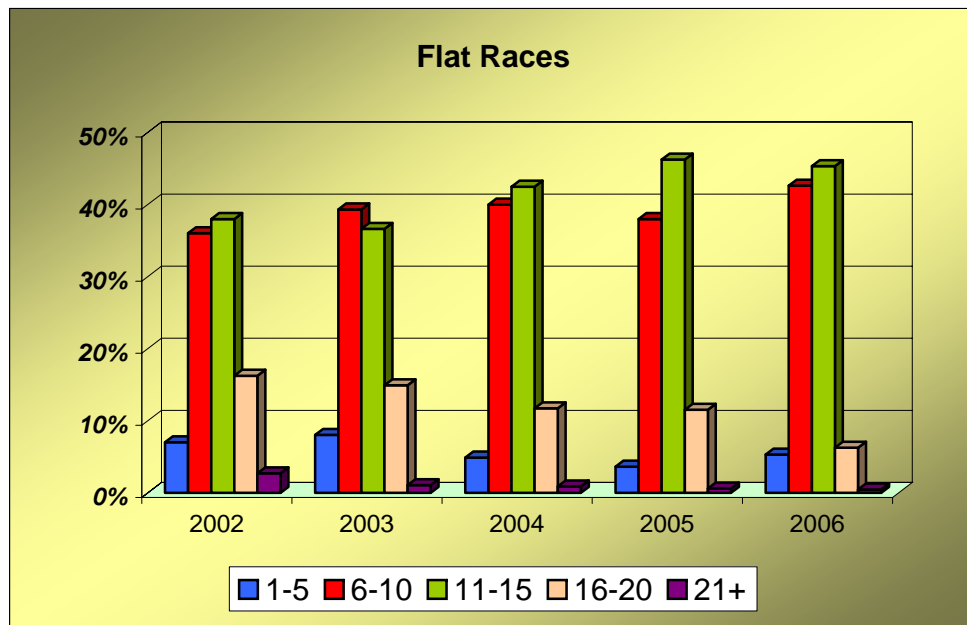
Steeple Chases

| Runners | 2002 | | 2003 | | 2004 | | 2005 | | 2006 | |
|--------------|--------------------|----------------|--------------------|----------------|--------------------|----------------|-----------------|----------------|-----------------|----------------|
| | Number of Races | % of All Races | Number of Races | % of All Races | Number of Races | % of All Races | Number of Races | % of All Races | Number of Races | % of All Races |
| 1-5 | 296 ⁽¹⁾ | 22.3% | 449 ⁽⁴⁾ | 32.6% | 286 ⁽¹⁾ | 20.3% | 188 | 14.0% | 194 | 14.1% |
| 6-10 | 767 | 57.7% | 700 | 50.8% | 831 | 58.9% | 836 | 62.2% | 806 | 58.7% |
| 11-15 | 220 | 16.5% | 185 | 13.4% | 251 | 17.8% | 264 | 19.6% | 323 | 23.5% |
| 16-20 | 38 | 2.9% | 34 | 2.5% | 34 | 2.4% | 49 | 3.6% | 39 | 2.8% |
| 21+ | 9 | 0.7% | 9 | 0.7% | 8 | 0.6% | 8 | 0.6% | 12 | 0.9% |
| TOTAL | 1,330 | 100.0% | 1,377 | 100.0% | 1,410 | 100.0% | 1,345 | 100.0% | 1,374 | 100.0% |

Notes

The number of walkovers is shown in brackets.

Analysis of Racing by Size of Field



Analysis of Racing

Number of Different Horses Which Ran, Number of Different Horses Which Won, Number of Races Divided Overnight, and Number of Horses Balloted Out Or Eliminated

Flat Racing

| | 2002 | 2003 | 2004 | 2005 | 2006 |
|--|--------|--------|--------|--------|--------|
| No. of Different Horses Which Ran as 2-y-o | 2,699 | 2,773 | 3,047 | 3,100 | 2,952 |
| No. of Different Horses Which Ran as 3-y-o | 3,019 | 3,024 | 3,206 | 3,393 | 3,388 |
| No. of Different Horses Which Ran as 4-y-o + | 3,873 | 3,930 | 4,295 | 4,496 | 4,614 |
| No. of Different Horses Which Ran - TOTAL | 9,591 | 9,727 | 10,548 | 10,989 | 10,954 |
| Average Number of Runs per Horse that Ran | 5.5 | 5.4 | 5.6 | 5.5 | 5.4 |
| No. of Different Horses Which Won a Race | 2,941 | 3,081 | 3,442 | 3,552 | 3,641 |
| No. of Races Divided Overnight | 281 | 192 | 207 | 184 | 177 |
| No. of Horses Balloted Out or Eliminated | 13,117 | 11,309 | 12,184 | 14,758 | 13,982 |

Jump Racing

| | 2002 | 2003 | 2004 | 2005 | 2006 |
|---|-------|-------|-------|-------|-------|
| No. of Different Horses Which Ran | 8,704 | 8,553 | 9,130 | 9,315 | 9,783 |
| Average Number of Runs per Horse that Ran | 3.5 | 3.5 | 3.7 | 3.7 | 3.6 |
| No. of Different Horses Which Won a Race | 2,038 | 2,145 | 2,241 | 2,291 | 2,325 |
| No. of Races Divided Overnight | 58 | 49 | 79 | 58 | 76 |
| No. of Horses Balloted Out or Eliminated | 1,376 | 1,346 | 1,765 | 1,996 | 4,451 |

Racing and Prize Money Statistics

Entries, Runners, Eliminations and Prize Money by Type of Race

Flat Races

2006

| Type of Race | No. of Races | Entries | | Runners | | Eliminations | | Value £ | % of Total Value |
|-----------------------|--------------|----------------|-------------|---------------|-------------|---------------|------------|-------------------|---------------------|
| | | Total | Average | Total | Average | Total | Average | | |
| HANDICAPS | | | | | | | | | |
| Sellers | 30 | 785 | 26.2 | 371 | 12.4 | 149 | 5.0 | 119,100 | 0.2% |
| Apprentices | 136 | 3,624 | 26.6 | 1,549 | 11.4 | 336 | 2.5 | 706,290 | 1.1% |
| Amateurs | 80 | 2,179 | 27.2 | 996 | 12.5 | 233 | 2.9 | 443,800 | 0.7% |
| Others | 2,849 | 76,450 | 26.8 | 31,543 | 11.1 | 8,951 | 3.1 | 28,975,365 | 43.7% |
| Sub-Total | 3,095 | 83,038 | 26.8 | 34,459 | 11.1 | 9,669 | 3.1 | 30,244,555 | 45.7% |
| WEIGHT FOR AGE | | | | | | | | | |
| Sellers | 220 | 4,843 | 22.0 | 2,401 | 10.9 | 513 | 2.3 | 875,850 | 1.3% |
| Claimers | 212 | 4,811 | 22.7 | 2,104 | 9.9 | 362 | 1.7 | 963,850 | 1.5% |
| Maidens | 1,240 | 32,387 | 26.1 | 12,726 | 10.3 | 744 | 0.6 | 7,362,653 | 11.1% |
| Novices | 70 | 1,363 | 19.5 | 403 | 5.8 | 0 | 0.0 | 486,093 | 0.7% |
| Apprentices | 18 | 410 | 22.8 | 224 | 12.4 | 90 | 5.0 | 58,500 | 0.1% |
| Amateurs | 3 | 64 | 21.3 | 39 | 13.0 | 24 | 8.0 | 11,000 | 0.0% |
| Pattern | 138 | 5,223 | 37.8 | 1,323 | 9.6 | 9 | 0.1 | 18,262,008 | 27.6% |
| Others | 558 | 13,049 | 23.4 | 5,563 | 10.0 | 2,373 | 4.3 | 7,979,302 | 12.0% |
| Sub-Total | 2,459 | 62,150 | 25.3 | 24,783 | 10.1 | 4,115 | 1.7 | 35,999,256 | 54.3% |
| TOTAL | 5,554 | 145,188 | 26.1 | 59,242 | 10.7 | 13,784 | 2.5 | 66,243,811 | 100.0% |

Notes

The above prize money figures have been rounded up or down as necessary. Consequently, the total prize money may not equate to the sum of the individual parts.

Racing and Prize Money Statistics
Entries, Runners, Eliminations and Prize Money by Type of Race

Jump Races
2006

| Type of Race | No. of Races | Entries | | Runners | | Eliminations | | Value £ | % of Total Value |
|--------------------------|--------------|---------------|-------------|---------------|-------------|--------------|------------|-------------------|---------------------|
| | | Total | Average | Total | Average | Total | Average | | |
| HURDLE RACES | | | | | | | | | |
| HANDICAPS | | | | | | | | | |
| Novices' | 135 | 4,327 | 32.1 | 1,600 | 11.9 | 334 | 2.5 | 1,075,964 | 2.9% |
| Sellers | 58 | 1,629 | 28.1 | 750 | 12.9 | 131 | 2.3 | 218,700 | 0.6% |
| Conditional Jockeys | 87 | 2,512 | 28.9 | 1,015 | 11.7 | 115 | 1.3 | 430,200 | 1.2% |
| Amateurs | 35 | 1,089 | 31.1 | 418 | 11.9 | 73 | 2.1 | 182,850 | 0.5% |
| Others | 522 | 15,269 | 29.3 | 5,937 | 11.4 | 698 | 1.3 | 5,974,116 | 16.2% |
| WEIGHT FOR AGE | | | | | | | | | |
| Novices' | 588 | 18,035 | 30.7 | 6,459 | 11.0 | 721 | 1.2 | 5,094,683 | 13.8% |
| Maidens | 184 | 6,683 | 36.3 | 2,363 | 12.8 | 686 | 3.7 | 920,900 | 2.5% |
| Sellers | 80 | 1,975 | 24.7 | 893 | 11.2 | 104 | 1.3 | 295,800 | 0.8% |
| Conditional Jockeys | 13 | 332 | 25.5 | 131 | 10.1 | 2 | 0.2 | 54,700 | 0.1% |
| Amateurs | 3 | 91 | 30.3 | 29 | 9.7 | 0 | 0.0 | 16,000 | 0.0% |
| Others | 53 | 1,216 | 22.9 | 500 | 9.4 | 20 | 0.4 | 2,006,417 | 5.4% |
| National Hunt Flat Races | 248 | 8,036 | 32.4 | 3,022 | 12.2 | 753 | 3.0 | 905,450 | 2.5% |
| Sub-Total | 2,006 | 61,194 | 30.5 | 23,117 | 11.5 | 3,637 | 1.8 | 17,175,780 | 46.6% |
| STEEPLE CHASES | | | | | | | | | |
| HANDICAPS | | | | | | | | | |
| Novices' | 163 | 3,854 | 23.6 | 1,456 | 8.9 | 71 | 0.4 | 1,457,482 | 4.0% |
| Sellers | 9 | 183 | 20.3 | 102 | 11.3 | 2 | 0.2 | 37,500 | 0.1% |
| Conditional Jockeys | 17 | 367 | 21.6 | 155 | 9.1 | 19 | 1.1 | 109,300 | 0.3% |
| Amateurs | 17 | 460 | 27.1 | 177 | 10.4 | 20 | 1.2 | 198,289 | 0.5% |
| Hunters | 1 | 21 | 21.0 | 12 | 12.0 | 0 | 0.0 | 15,000 | 0.0% |
| Others | 659 | 15,874 | 24.1 | 6,341 | 9.6 | 389 | 0.6 | 10,615,601 | 28.8% |
| WEIGHT FOR AGE | | | | | | | | | |
| Novices' | 346 | 6,918 | 20.0 | 2,480 | 7.2 | 15 | 0.0 | 4,087,643 | 11.1% |
| Maidens | 16 | 347 | 21.7 | 128 | 8.0 | 4 | 0.3 | 108,500 | 0.3% |
| Amateurs | 3 | 77 | 25.7 | 41 | 13.7 | 0 | 0.0 | 72,000 | 0.2% |
| Hunters | 108 | 2,484 | 23.0 | 1,093 | 10.1 | 68 | 0.6 | 506,909 | 1.4% |
| Others | 35 | 728 | 20.8 | 266 | 7.6 | 0 | 0.0 | 2,468,108 | 6.7% |
| Sub-Total | 1,374 | 31,313 | 22.8 | 12,251 | 8.9 | 588 | 0.4 | 19,676,331 | 53.4% |
| GRAND TOTAL | 3,380 | 92,507 | 27.4 | 35,368 | 10.5 | 4,225 | 1.3 | 36,852,111 | 100.0% |

Notes
The above prize money figures have been rounded up or down as necessary. Consequently, the total prize money may not equate to the sum of the individual parts.

Racing and Prize Money Statistics

Entries, Runners, Eliminations and Prize Money by Distance of Race

Hurdle Races and National Hunt Flat Races

2006

| Distance of Race | No. of Races | Entries | | Runners | | Eliminations | | Value £ | % of Total Value |
|-----------------------|--------------|---------------|-------------|---------------|-------------|--------------|------------|-------------------|---------------------|
| | | Total | Average | Total | Average | Total | Average | | |
| HANDICAPS | | | | | | | | | |
| 2 Miles | 289 | 8,142 | 28.2 | 3,339 | 11.6 | 420 | 1.5 | 3,075,382 | 17.9% |
| 2 ¼ Miles | 80 | 2,190 | 27.4 | 885 | 11.1 | 131 | 1.6 | 584,526 | 3.4% |
| 2 ½ Miles | 204 | 6,494 | 31.8 | 2,366 | 11.6 | 369 | 1.8 | 1,899,888 | 11.1% |
| 2 ¾ Miles | 113 | 3,514 | 31.1 | 1,335 | 11.8 | 141 | 1.2 | 939,050 | 5.5% |
| 3 Miles and over | 151 | 4,486 | 29.7 | 1,795 | 11.9 | 290 | 1.9 | 1,382,984 | 8.1% |
| Sub-Total | 837 | 24,826 | 29.7 | 9,720 | 11.6 | 1,351 | 1.6 | 7,881,830 | 45.9% |
| WEIGHT FOR AGE | | | | | | | | | |
| 2 Miles | 657 | 20,374 | 31.0 | 7,800 | 11.9 | 1,422 | 2.2 | 5,111,534 | 29.8% |
| 2 ¼ Miles | 125 | 3,684 | 29.5 | 1,365 | 10.9 | 225 | 1.8 | 593,453 | 3.5% |
| 2 ½ Miles | 219 | 7,505 | 34.3 | 2,471 | 11.3 | 529 | 2.4 | 1,860,235 | 10.8% |
| 2 ¾ Miles | 77 | 2,285 | 29.7 | 816 | 10.6 | 55 | 0.7 | 475,014 | 2.8% |
| 3 Miles and over | 91 | 2,520 | 27.7 | 945 | 10.4 | 55 | 0.6 | 1,253,714 | 7.3% |
| Sub-Total | 1,169 | 36,368 | 31.1 | 13,397 | 11.5 | 2,286 | 2.0 | 9,293,950 | 54.1% |
| TOTAL | 2,006 | 61,194 | 30.5 | 23,117 | 11.5 | 3,637 | 1.8 | 17,175,780 | 100.0% |

Notes

The above prize money figures have been rounded up or down as necessary. Consequently, the total prize money may not equate to the sum of the individual parts.

Racing and Prize Money Statistics

Entries, Runners, Eliminations and Prize Money by Distance of Race

Steeple Chases

2006

| Distance of Race | No. of Races | Entries | | Runners | | Eliminations | | Value £ | % of Total Value |
|-----------------------|--------------|---------------|-------------|---------------|------------|--------------|------------|-------------------|---------------------|
| | | Total | Average | Total | Average | Total | Average | | |
| HANDICAPS | | | | | | | | | |
| 2 Miles | 166 | 3,040 | 18.3 | 1,381 | 8.3 | 23 | 0.1 | 1,872,739 | 9.5% |
| 2 ¼ Miles | 65 | 1,378 | 21.2 | 603 | 9.3 | 5 | 0.1 | 653,800 | 3.3% |
| 2 ½ Miles | 212 | 5,164 | 24.4 | 1,950 | 9.2 | 117 | 0.6 | 2,675,181 | 13.6% |
| 2 ¾ Miles | 65 | 1,464 | 22.5 | 589 | 9.1 | 14 | 0.2 | 974,800 | 5.0% |
| 3 Miles and over | 358 | 9,713 | 27.1 | 3,720 | 10.4 | 342 | 1.0 | 6,256,652 | 31.8% |
| Sub-Total | 866 | 20,759 | 24.0 | 8,243 | 9.5 | 501 | 0.6 | 12,433,171 | 63.2% |
| WEIGHT FOR AGE | | | | | | | | | |
| 2 Miles | 100 | 1,766 | 17.7 | 702 | 7.0 | 0 | 0.0 | 1,881,511 | 9.6% |
| 2 ¼ Miles | 34 | 713 | 21.0 | 241 | 7.1 | 2 | 0.1 | 331,008 | 1.7% |
| 2 ½ Miles | 138 | 3,000 | 21.7 | 1,092 | 7.9 | 24 | 0.2 | 1,709,709 | 8.7% |
| 2 ¾ Miles | 46 | 1,012 | 22.0 | 385 | 8.4 | 18 | 0.4 | 419,490 | 2.1% |
| 3 Miles and over | 190 | 4,063 | 21.4 | 1,588 | 8.4 | 43 | 0.2 | 2,901,442 | 14.7% |
| Sub-Total | 508 | 10,554 | 20.8 | 4,008 | 7.9 | 87 | 0.2 | 7,243,160 | 36.8% |
| TOTAL | 1,374 | 31,313 | 22.8 | 12,251 | 8.9 | 588 | 0.4 | 19,676,331 | 100.0% |

Notes

The above prize money figures have been rounded up or down as necessary. Consequently, the total prize money may not equate to the sum of the individual parts.

Prize Money by Source for Pattern Races

Flat Racing

2006

| Prize Money Contributions | | | | |
|---------------------------|--------------|--|------------------------------|--------------------------|
| Racecourse | No. of Races | Racecourse Executive plus Sponsors £ | Owners' Contribution £ | Total Prize Fund £ |
| ASCOT | 27 | 3,359,060 | 1,279,335 | 4,638,395 |
| AYR | 1 | 47,000 | 3,000 | 50,000 |
| CHESTER | 4 | 247,549 | 17,935 | 265,484 |
| EPSOM DOWNS | 5 | 1,192,090 | 928,810 | 2,120,900 |
| GOODWOOD | 15 | 1,163,130 | 234,120 | 1,397,250 |
| HAYDOCK PARK | 3 | 364,000 | 101,000 | 465,000 |
| KEMPTON PARK | 2 | 87,450 | 2,550 | 90,000 |
| LINGFIELD PARK | 5 | 331,710 | 27,480 | 359,190 |
| NEWBURY | 13 | 760,045 | 203,605 | 963,650 |
| NEWCASTLE | 1 | 45,440 | 4,560 | 50,000 |
| NEWMARKET | 28 | 2,645,924 | 857,740 | 3,503,664 |
| SALISBURY | 1 | 67,000 | 3,000 | 70,000 |
| SANDOWN PARK | 9 | 783,085 | 185,240 | 968,325 |
| WINDSOR | 1 | 44,500 | 5,500 | 50,000 |
| YORK | 23 | 2,468,190 | 801,960 | 3,270,150 |
| TOTAL | 138 | 13,606,173 | 4,655,835 | 18,262,008 |

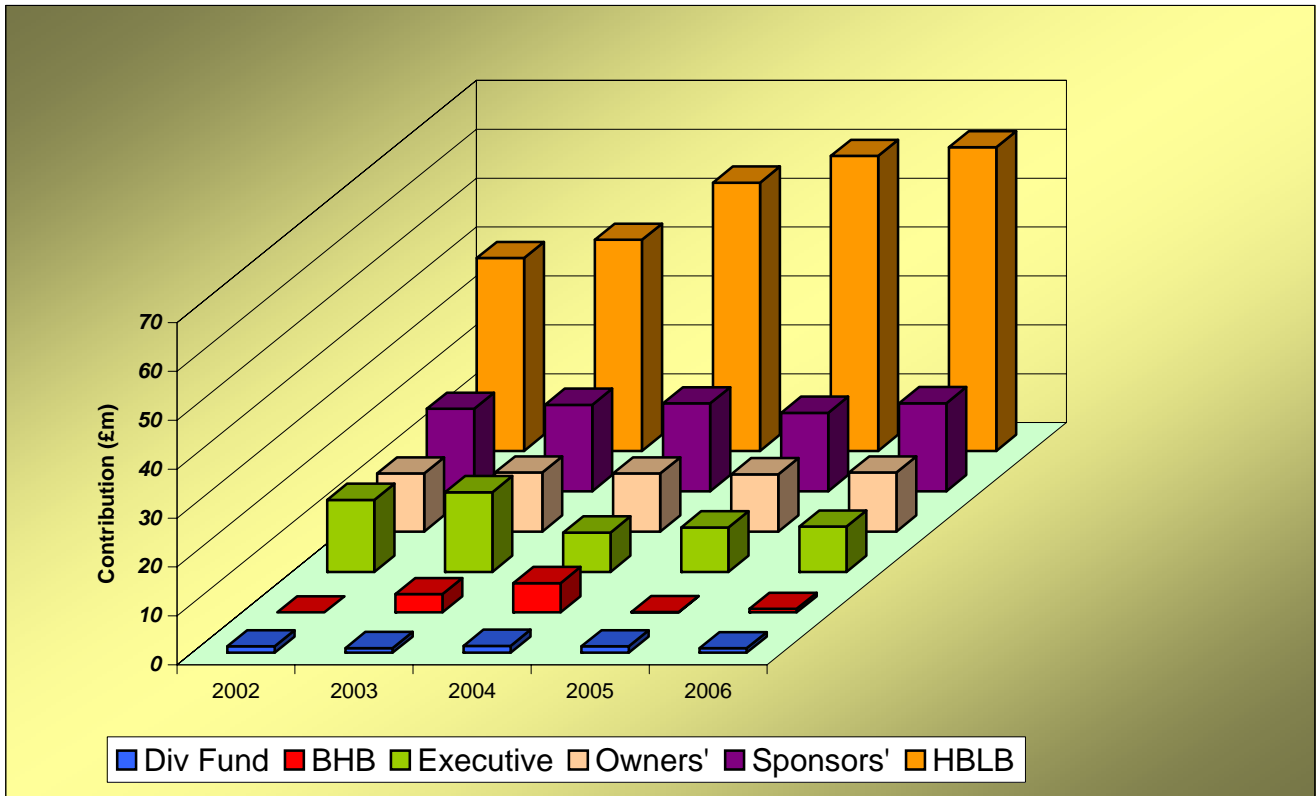
Breakdown of Prize Money by Source

| | £ Million | | | | | | |
|-------------|-----------|-----------|-------|---------|------|----------|---------------|
| | Executive | Sponsors' | HBLB | Owners' | BHB | Div Fund | TOTAL |
| 2002 | 14.75 | 16.84 | 39.43 | 11.87 | 0.00 | 1.30 | 84.20 |
| 2003 | 16.30 | 17.69 | 43.15 | 12.08 | 3.72 | 0.95 | 93.90 |
| 2004 | 8.07 | 17.97 | 54.86 | 11.89 | 5.97 | 1.41 | 100.17 |
| 2005 | 9.13 | 16.04 | 60.32 | 11.72 | 0.07 | 1.30 | 98.57 |
| 2006 | 9.27 | 18.00 | 62.09 | 12.10 | 0.71 | 0.92 | 103.10 |

Notes

The above figures have been rounded to two decimal places.

Consequently, the TOTAL column will not always equate to the sum of the individual parts.



Comparison of Flat/Jump Prize Money Pools

Prize Money Statistics

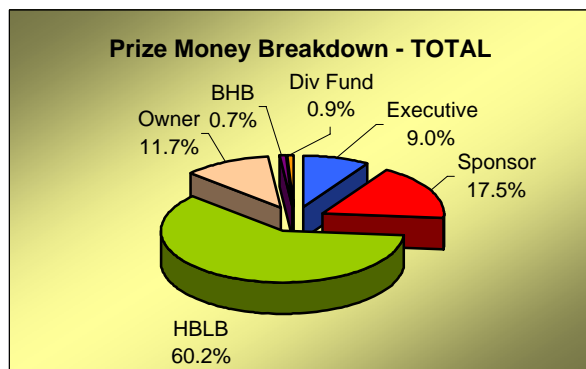
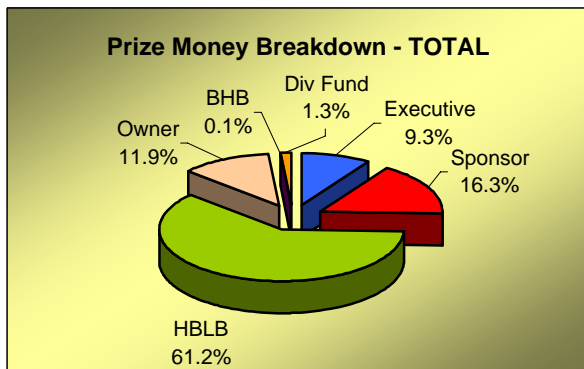
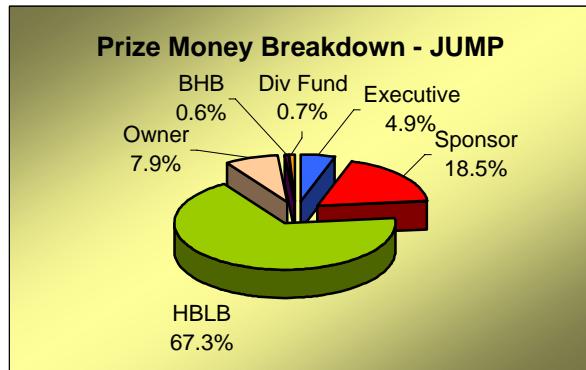
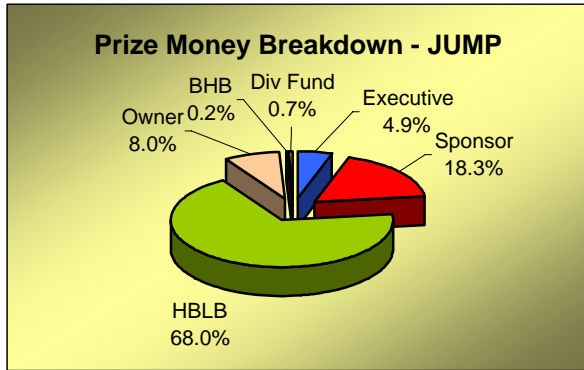
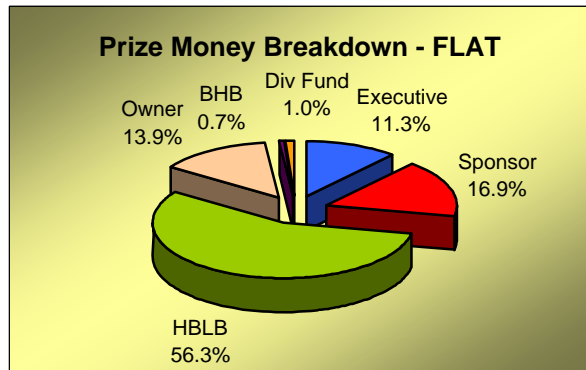
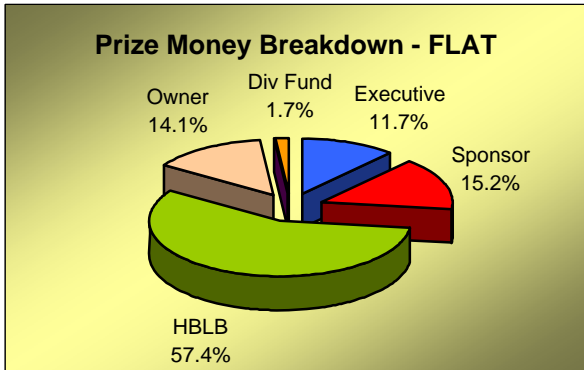
2005

| | Flat | Jump | TOTAL |
|------------------|-------------------|-------------------|-------------------|
| Executive | 7,409,049 | 1,716,805 | 9,125,854 |
| Sponsor | 9,629,234 | 6,408,196 | 16,037,430 |
| HBLB | 36,465,474 | 23,855,036 | 60,320,510 |
| Owner | 8,925,296 | 2,797,201 | 11,722,497 |
| BHB | 0 | 67,000 | 67,000 |
| Div Fund | 1,071,700 | 229,100 | 1,300,800 |
| TOTAL | 63,500,753 | 35,073,338 | 98,574,091 |

Prize Money Statistics

2006

| | Flat | Jump | TOTAL |
|------------------|-------------------|-------------------|--------------------|
| Executive | 7,464,918 | 1,809,662 | 9,274,580 |
| Sponsor | 11,169,101 | 6,831,810 | 18,000,911 |
| HBLB | 37,293,428 | 24,797,160 | 62,090,588 |
| Owner | 9,184,664 | 2,912,929 | 12,097,593 |
| BHB | 474,000 | 238,000 | 712,000 |
| Div Fund | 657,700 | 262,550 | 920,250 |
| TOTAL | 66,243,811 | 36,852,111 | 103,095,922 |



Notes

The above figures have been rounded up or down as necessary. Consequently, the totals will not always equate to the sum of the individual parts.

Total Prize Money by Racecourse Flat Racing - 2006

| | Fixtures Ran (Aban) | Exec+Spon | HBLB | Owner | BHB | Div Fund | TOTAL |
|------------------|------------------------|-------------------|-------------------|------------------|----------------|----------------|-------------------|
| ASCOT | 14 | 3,890,842 | 1,634,000 | 1,751,992 | 9,000 | 0 | 7,285,834 |
| AYR | 17 | 305,266 | 830,430 | 134,094 | 2,000 | 0 | 1,271,790 |
| BATH | 19 | 75,079 | 681,220 | 36,901 | 4,000 | 10,700 | 807,900 |
| BEVERLEY | 18 (1) | 172,565 | 708,340 | 67,384 | 26,000 | 7,500 | 981,789 |
| BRIGHTON | 19 (1) | 103 | 647,680 | 30,679 | 0 | 0 | 678,462 |
| CARLISLE | 9 | 58,489 | 269,077 | 21,434 | 0 | 0 | 349,000 |
| CATTERICK BRIDGE | 18 | 87,843 | 613,000 | 51,840 | 2,000 | 10,000 | 764,683 |
| CHEPSTOW | 13 (1) | 8,525 | 420,455 | 24,320 | 2,000 | 0 | 455,300 |
| CHESTER | 12 | 480,686 | 781,360 | 73,574 | 35,000 | 0 | 1,370,620 |
| EPSOM DOWNS | 8 | 1,339,029 | 619,800 | 995,237 | 5,000 | 0 | 2,959,066 |
| FOLKESTONE | 14 | 17,117 | 499,470 | 32,923 | 5,000 | 5,000 | 559,510 |
| GOODWOOD | 20 | 1,465,979 | 1,593,780 | 471,028 | 0 | 0 | 3,530,787 |
| HAMILTON PARK | 17 | 120,602 | 659,220 | 51,457 | 12,000 | 0 | 843,279 |
| HAYDOCK PARK | 20 | 618,797 | 1,234,317 | 257,928 | 14,000 | 0 | 2,125,042 |
| KEMPTON PARK | 54 | 471,687 | 1,952,320 | 139,008 | 27,500 | 29,500 | 2,620,015 |
| LEICESTER | 19 (2) | 129,068 | 784,570 | 67,603 | 27,000 | 22,000 | 1,030,241 |
| LINGFIELD PARK | 91 | 423,378 | 3,924,696 | 279,524 | 33,000 | 138,500 | 4,799,097 |
| MUSSELBURGH | 18 | 200,269 | 633,450 | 52,291 | 0 | 0 | 886,010 |
| NEWBURY | 17 (1) | 782,642 | 1,188,690 | 438,312 | 28,500 | 72,000 | 2,510,144 |
| NEWCASTLE | 14 (1) | 266,146 | 571,420 | 63,519 | 0 | 9,500 | 910,585 |
| NEWMARKET | 37 | 2,784,130 | 2,978,780 | 1,422,550 | 75,000 | 50,000 | 7,310,460 |
| NOTTINGHAM | 20 | 71,647 | 724,180 | 85,539 | 25,500 | 43,000 | 949,866 |
| PONTEFRACT | 16 | 186,756 | 792,610 | 67,730 | 13,000 | 14,000 | 1,074,096 |
| REDCAR | 17 (1) | 181,567 | 691,800 | 283,633 | 0 | 3,000 | 1,160,000 |
| RIPON | 14 | 192,902 | 586,700 | 27,183 | 20,000 | 17,000 | 843,785 |
| SALISBURY | 13 (1) | 196,654 | 621,344 | 72,805 | 26,000 | 17,000 | 933,803 |
| SANDOWN PARK | 18 | 679,971 | 1,145,787 | 267,174 | 11,000 | 0 | 2,103,932 |
| SOUTHWELL | 67 | -30,707 | 1,900,440 | 88,562 | 16,000 | 53,500 | 2,027,796 |
| THIRSK | 13 | 206,375 | 500,455 | 670 | 9,000 | 5,000 | 721,500 |
| WARWICK | 14 | 88,389 | 443,850 | 59,761 | 2,500 | 18,000 | 612,500 |
| WINDSOR | 27 | 231,012 | 1,119,773 | 128,949 | 26,000 | 26,000 | 1,531,734 |
| WOLVERHAMPTON | 111 | 74,118 | 3,330,014 | 195,195 | 8,000 | 102,000 | 3,709,327 |
| YARMOUTH | 21 (1) | 51,793 | 770,960 | 43,757 | 5,000 | 4,500 | 876,010 |
| YORK | 17 | 2,805,302 | 1,439,440 | 1,400,108 | 5,000 | 0 | 5,649,850 |
| TOTAL | 836 (10) | 18,634,019 | 37,293,428 | 9,184,664 | 474,000 | 657,700 | 66,243,811 |

Notes

The above figures have been rounded up or down as necessary. Consequently, the totals will not always equate to the sum of the individual parts.
 No fixtures were held at Doncaster in 2006, due to re-development work being carried out.
 No fixtures were staged at Great Leighs in 2006, as the opening of the racecourse had been delayed.

Total Prize Money by Racecourse Jump Racing - 2006

| | Fixtures Ran | (Aban) | Exec+Spon | HBLB | Owner | BHB | Div Fund | TOTAL |
|-------------------|-----------------|-------------|------------------|-------------------|------------------|----------------|----------------|-------------------|
| AINTREE | 7 | | 1,595,802 | 795,200 | 303,909 | 9,000 | 0 | 2,703,911 |
| ASCOT | 6 | | 720,260 | 533,520 | 51,965 | 13,000 | 0 | 1,318,745 |
| AYR | 13 | (1) | 187,894 | 645,100 | 104,482 | 13,000 | 5,000 | 955,476 |
| BANGOR-ON-DEE | 12 | (2) | 82,650 | 469,820 | 34,901 | 0 | 16,600 | 603,971 |
| CARLISLE | 10 | (2) | 22,728 | 477,100 | 29,147 | 6,000 | 0 | 534,975 |
| CARTMEL | 6 | | 30,930 | 159,725 | 12,045 | 0 | 4,000 | 206,700 |
| CATTERICK BRIDGE | 7 | (2) | -6,248 | 270,430 | 21,318 | 0 | 7,000 | 292,500 |
| CHELTENHAM | 15 | (1) | 2,457,175 | 1,580,420 | 811,527 | 27,000 | 0 | 4,876,122 |
| CHEPSTOW | 14 | (2) | 63,336 | 726,650 | 50,132 | 0 | 9,100 | 849,218 |
| EXETER | 17 | | 94,684 | 745,360 | 70,005 | 13,000 | 11,500 | 934,549 |
| FAKENHAM | 10 | (1) | 27,516 | 403,200 | 18,224 | 3,000 | 8,000 | 459,940 |
| FOLKESTONE | 8 | (1) | 8,219 | 262,080 | 19,701 | 0 | 8,000 | 298,000 |
| FONTWELL PARK | 22 | (1) | 90,573 | 890,650 | 41,331 | 3,000 | 7,800 | 1,033,354 |
| HAYDOCK PARK | 10 | (1) | 581,171 | 827,283 | 85,029 | 6,000 | 2,500 | 1,501,983 |
| HEREFORD | 17 | (1) | 23,616 | 622,940 | 42,714 | 0 | 10,930 | 700,200 |
| HEXHAM | 12 | (2) | -2,643 | 416,300 | 30,843 | 3,000 | 8,500 | 456,000 |
| HUNTINGDON | 16 | (2) | 87,094 | 618,910 | 49,691 | 0 | 1,000 | 756,695 |
| KELSO | 12 | (2) | -53,780 | 574,145 | 42,155 | 13,000 | 16,400 | 591,920 |
| KEMPTON PARK | 5 | | 339,462 | 425,000 | 34,923 | 13,000 | 0 | 812,385 |
| LEICESTER | 11 | | 44,104 | 440,810 | 40,970 | 10,000 | 0 | 535,884 |
| LINGFIELD PARK | 4 | (2) | 39,155 | 332,077 | 24,785 | 0 | 0 | 396,016 |
| LUDLOW | 15 | (1) | 95,160 | 645,110 | 25,740 | 10,000 | 5,500 | 781,510 |
| MARKET RASEN | 21 | | 166,595 | 858,920 | 71,215 | 0 | 19,770 | 1,116,500 |
| MUSSELBURGH | 8 | | 4,634 | 339,060 | 21,806 | 10,000 | 2,000 | 377,500 |
| NEWBURY | 10 | (1) | 199,117 | 835,600 | 110,271 | 3,000 | 2,500 | 1,150,488 |
| NEWCASTLE | 8 | (3) | 92,233 | 435,000 | 24,869 | 0 | 0 | 552,102 |
| NEWTON ABBOT | 16 | (2) | 64,689 | 631,120 | 4,808 | 6,000 | 0 | 706,617 |
| PERTH | 12 | | 83,677 | 569,560 | 30,463 | 6,000 | 0 | 689,700 |
| PLUMPTON | 14 | (2) | 16,933 | 542,285 | 33,515 | 6,000 | 6,000 | 604,733 |
| SANDOWN PARK | 9 | | 753,539 | 902,553 | 145,600 | 3,000 | 0 | 1,804,691 |
| SEDFIELD | 19 | (1) | 51,890 | 617,585 | 35,005 | 0 | 32,450 | 736,930 |
| SOUTHWELL | 10 | (1) | 68,275 | 398,800 | 39,225 | 15,000 | 0 | 521,300 |
| STRATFORD-ON-AVON | 15 | | 185,668 | 701,920 | 60,912 | 6,000 | 11,000 | 965,500 |
| TAUNTON | 13 | (2) | 66,711 | 509,800 | 44,852 | 0 | 18,500 | 639,863 |
| TOWCESTER | 17 | | 8,937 | 598,270 | 50,615 | 0 | 5,000 | 662,822 |
| UTTOXETER | 22 | (3) | 42,201 | 1,028,367 | 63,482 | 10,000 | 5,500 | 1,149,550 |
| WARWICK | 9 | (1) | -27,984 | 529,530 | 38,545 | 8,000 | 0 | 548,091 |
| WETHERBY | 17 | (1) | 135,518 | 865,140 | 78,958 | 10,000 | 5,000 | 1,094,616 |
| WINCANTON | 16 | | 200,976 | 886,821 | 61,760 | 13,000 | 16,000 | 1,178,557 |
| WORCESTER | 21 | | -991 | 685,000 | 51,491 | 0 | 17,000 | 752,500 |
| TOTAL | 506 | (41) | 8,641,472 | 24,797,160 | 2,912,929 | 238,000 | 262,550 | 36,852,111 |

Notes

The above figures have been rounded up or down as necessary. Consequently, the totals will not always equate to the sum of the individual parts. No fixtures were held at Doncaster in 2006, due to re-development work being carried out.

Total Prize Money by Racecourse All Racing - 2006

| | Fixtures Ran (Aban) | Exec+Spon | HBLB | Owner | BHB | Div Fund | TOTAL |
|-------------------|------------------------|-------------------|-------------------|-------------------|----------------|----------------|--------------------|
| AINTREE | 7 | 1,595,802 | 795,200 | 303,909 | 9,000 | 0 | 2,703,911 |
| ASCOT | 20 | 4,611,102 | 2,167,520 | 1,803,957 | 22,000 | 0 | 8,604,579 |
| AYR | 30 (1) | 493,160 | 1,475,530 | 238,576 | 15,000 | 5,000 | 2,227,266 |
| BANGOR-ON-DEE | 12 (2) | 82,650 | 469,820 | 34,901 | 0 | 16,600 | 603,971 |
| BATH | 19 | 75,079 | 681,220 | 36,901 | 4,000 | 10,700 | 807,900 |
| BEVERLEY | 18 (1) | 172,565 | 708,340 | 67,384 | 26,000 | 7,500 | 981,789 |
| BRIGHTON | 19 (1) | 103 | 647,680 | 30,679 | 0 | 0 | 678,462 |
| CARLISLE | 19 (2) | 81,217 | 746,177 | 50,581 | 6,000 | 0 | 883,975 |
| CARTMEL | 6 | 30,930 | 159,725 | 12,045 | 0 | 4,000 | 206,700 |
| CATTERICK BRIDGE | 25 (2) | 81,595 | 883,430 | 73,158 | 2,000 | 17,000 | 1,057,183 |
| CHELTENHAM | 15 (1) | 2,457,175 | 1,580,420 | 811,527 | 27,000 | 0 | 4,876,122 |
| CHEPSTOW | 27 (3) | 71,861 | 1,147,105 | 74,452 | 2,000 | 9,100 | 1,304,518 |
| CHESTER | 12 | 480,686 | 781,360 | 73,574 | 35,000 | 0 | 1,370,620 |
| EPSOM DOWNS | 8 | 1,339,029 | 619,800 | 995,237 | 5,000 | 0 | 2,959,066 |
| EXETER | 17 | 94,684 | 745,360 | 70,005 | 13,000 | 11,500 | 934,549 |
| FAKENHAM | 10 (1) | 27,516 | 403,200 | 18,224 | 3,000 | 8,000 | 459,940 |
| FOLKESTONE | 22 (1) | 25,336 | 761,550 | 52,624 | 5,000 | 13,000 | 857,510 |
| FONTWELL PARK | 22 (1) | 90,573 | 890,650 | 41,331 | 3,000 | 7,800 | 1,033,354 |
| GOODWOOD | 20 | 1,465,979 | 1,593,780 | 471,028 | 0 | 0 | 3,530,787 |
| HAMILTON PARK | 17 | 120,602 | 659,220 | 51,457 | 12,000 | 0 | 843,279 |
| HAYDOCK PARK | 30 (1) | 1,199,967 | 2,061,600 | 342,957 | 20,000 | 2,500 | 3,627,024 |
| HEREFORD | 17 (1) | 23,616 | 622,940 | 42,714 | 0 | 10,930 | 700,200 |
| HEXHAM | 12 (2) | -2,643 | 416,300 | 30,843 | 3,000 | 8,500 | 456,000 |
| HUNTINGDON | 16 (2) | 87,094 | 618,910 | 49,691 | 0 | 1,000 | 756,695 |
| KELSO | 12 (2) | -53,780 | 574,145 | 42,155 | 13,000 | 16,400 | 591,920 |
| KEMPTON PARK | 59 | 811,149 | 2,377,320 | 173,931 | 40,500 | 29,500 | 3,432,400 |
| LEICESTER | 30 (2) | 173,172 | 1,225,380 | 108,573 | 37,000 | 22,000 | 1,566,125 |
| LINGFIELD PARK | 95 (2) | 462,532 | 4,256,772 | 304,309 | 33,000 | 138,500 | 5,195,113 |
| LUDLOW | 15 (1) | 95,160 | 645,110 | 25,740 | 10,000 | 5,500 | 781,510 |
| MARKET RASEN | 21 | 166,595 | 858,920 | 71,215 | 0 | 19,770 | 1,116,500 |
| MUSSELBURGH | 26 | 204,903 | 972,510 | 74,097 | 10,000 | 2,000 | 1,263,510 |
| NEWBURY | 27 (2) | 981,759 | 2,024,290 | 548,583 | 31,500 | 74,500 | 3,660,632 |
| NEWCASTLE | 22 (4) | 358,379 | 1,006,420 | 88,388 | 0 | 9,500 | 1,462,687 |
| NEWMARKET | 37 | 2,784,130 | 2,978,780 | 1,422,550 | 75,000 | 50,000 | 7,310,460 |
| NEWTON ABBOT | 16 (2) | 64,689 | 631,120 | 4,808 | 6,000 | 0 | 706,617 |
| NOTTINGHAM | 20 | 71,647 | 724,180 | 85,539 | 25,500 | 43,000 | 949,866 |
| PERTH | 12 | 83,677 | 569,560 | 30,463 | 6,000 | 0 | 689,700 |
| PLUMPTON | 14 (2) | 16,933 | 542,285 | 33,515 | 6,000 | 6,000 | 604,733 |
| PONTEFRACT | 16 | 186,756 | 792,610 | 67,730 | 13,000 | 14,000 | 1,074,096 |
| REDCAR | 17 (1) | 181,567 | 691,800 | 283,633 | 0 | 3,000 | 1,160,000 |
| RIPON | 14 | 192,902 | 586,700 | 27,183 | 20,000 | 17,000 | 843,785 |
| SALISBURY | 13 (1) | 196,654 | 621,344 | 72,805 | 26,000 | 17,000 | 933,803 |
| SANDOWN PARK | 27 | 1,433,509 | 2,048,340 | 412,774 | 14,000 | 0 | 3,908,623 |
| SEDFIELD | 19 (1) | 51,890 | 617,585 | 35,005 | 0 | 32,450 | 736,930 |
| SOUTHWELL | 77 (1) | 37,569 | 2,299,240 | 127,787 | 31,000 | 53,500 | 2,549,096 |
| STRATFORD-ON-AVON | 15 | 185,668 | 701,920 | 60,912 | 6,000 | 11,000 | 965,500 |
| TAUNTON | 13 (2) | 66,711 | 509,800 | 44,852 | 0 | 18,500 | 639,863 |
| THIRSK | 13 | 206,375 | 500,455 | 670 | 9,000 | 5,000 | 721,500 |
| TOWCESTER | 17 | 8,937 | 598,270 | 50,615 | 0 | 5,000 | 662,822 |
| UTTOXETER | 22 (3) | 42,201 | 1,028,367 | 63,482 | 10,000 | 5,500 | 1,149,550 |
| WARWICK | 23 (1) | 60,405 | 973,380 | 98,306 | 10,500 | 18,000 | 1,160,591 |
| WETHERBY | 17 (1) | 135,518 | 865,140 | 78,958 | 10,000 | 5,000 | 1,094,616 |
| WINCANTON | 16 | 200,976 | 886,821 | 61,760 | 13,000 | 16,000 | 1,178,557 |
| WINDSOR | 27 | 231,012 | 1,119,773 | 128,949 | 26,000 | 26,000 | 1,531,734 |
| WOLVERHAMPTON | 111 | 74,118 | 3,330,014 | 195,195 | 8,000 | 102,000 | 3,709,327 |
| WORCESTER | 21 | -991 | 685,000 | 51,491 | 0 | 17,000 | 752,500 |
| YARMOUTH | 21 (1) | 51,793 | 770,960 | 43,757 | 5,000 | 4,500 | 876,010 |
| YORK | 17 | 2,805,302 | 1,439,440 | 1,400,108 | 5,000 | 0 | 5,649,850 |
| TOTAL | 1,342 (51) | 27,275,491 | 62,090,588 | 12,097,593 | 712,000 | 920,250 | 103,095,922 |

Notes

The above figures have been rounded up or down as necessary. Consequently, the totals will not always equate to the sum of the individual parts. No fixtures were held at Doncaster in 2006, due to re-development work being carried out. No fixtures were staged at Great Leighs in 2006, as the opening of the racecourse had been delayed.

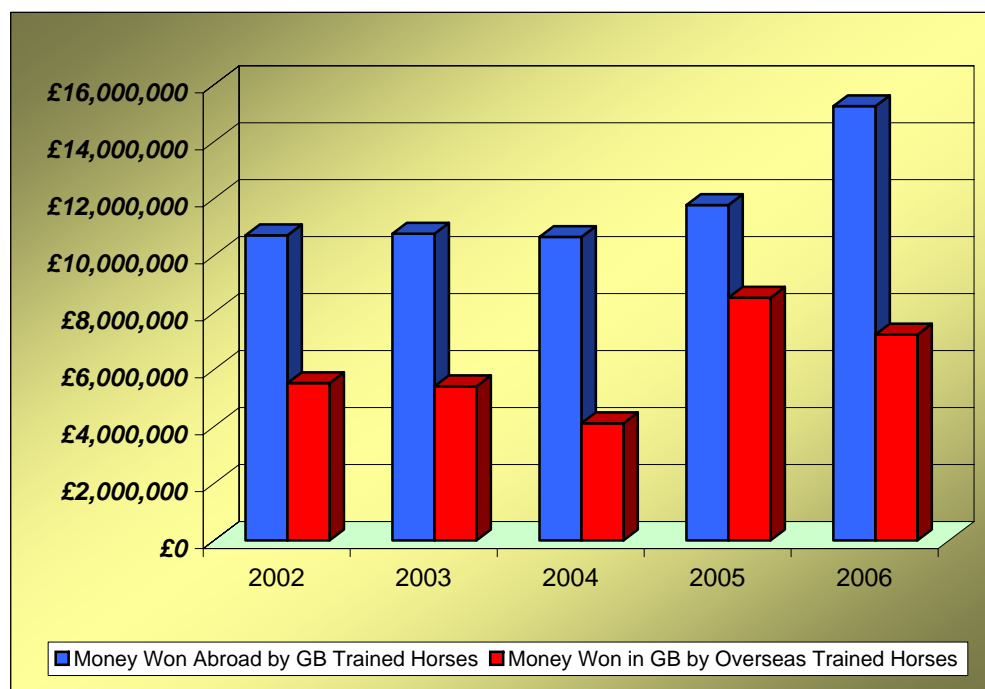
Sponsored Number Cloth Income

2006

| | FLAT | JUMP | TOTAL |
|-------------------|----------------|----------------|----------------|
| AINTREE | | 17,500 | 17,500 |
| ASCOT | 33,500 | 7,750 | 41,250 |
| AYR | 3,750 | 1,500 | 5,250 |
| BANGOR-ON-DEE | | 500 | 500 |
| BATH | 1,000 | | 1,000 |
| BEVERLEY | 250 | | 250 |
| BRIGHTON | 250 | | 250 |
| CARLISLE | 0 | 1,500 | 1,500 |
| CARTMEL | | 0 | 0 |
| CATTERICK BRIDGE | 500 | 0 | 500 |
| CHELTENHAM | | 18,750 | 18,750 |
| CHEPSTOW | 0 | 2,500 | 2,500 |
| CHESTER | 5,500 | | 5,500 |
| EPSOM DOWNS | 8,000 | | 8,000 |
| EXETER | | 250 | 250 |
| FAKENHAM | | 0 | 0 |
| FOLKESTONE | 2,000 | 0 | 2,000 |
| FONTWELL PARK | | 2,500 | 2,500 |
| GOODWOOD | 13,500 | | 13,500 |
| HAMILTON PARK | 750 | | 750 |
| HAYDOCK PARK | 5,000 | 6,000 | 11,000 |
| HEREFORD | | 750 | 750 |
| HEXHAM | | 0 | 0 |
| HUNTINGDON | | 1,750 | 1,750 |
| KELSO | | 250 | 250 |
| KEMPTON PARK | 5,250 | 4,000 | 9,250 |
| LEICESTER | 0 | 0 | 0 |
| LINGFIELD PARK | 4,750 | 2,500 | 7,250 |
| LUDLOW | | 0 | 0 |
| MARKET RASEN | | 4,250 | 4,250 |
| MUSSELBURGH | 750 | 1,500 | 2,250 |
| NEWBURY | 10,750 | 5,250 | 16,000 |
| NEWCASTLE | 3,250 | 3,500 | 6,750 |
| NEWMARKET | 25,250 | | 25,250 |
| NEWTON ABBOT | | 0 | 0 |
| NOTTINGHAM | 1,500 | | 1,500 |
| PERTH | | 1,500 | 1,500 |
| PLUMPTON | | 500 | 500 |
| PONTEFRACT | 0 | | 0 |
| REDCAR | 3,000 | | 3,000 |
| RIPON | 1,500 | | 1,500 |
| SALISBURY | 1,000 | | 1,000 |
| SANDOWN PARK | 6,750 | 10,500 | 17,250 |
| SEDFIELD | | 250 | 250 |
| SOUTHWELL | 0 | 1,000 | 1,000 |
| STRATFORD-ON-AVON | | 500 | 500 |
| TAUNTON | | 0 | 0 |
| THIRSK | 0 | | 0 |
| TOWCESTER | | 500 | 500 |
| UTTOXETER | | 3,000 | 3,000 |
| WARWICK | 0 | 2,500 | 2,500 |
| WETHERBY | | 4,500 | 4,500 |
| WINCANTON | | 3,750 | 3,750 |
| WINDSOR | 2,500 | | 2,500 |
| WOLVERHAMPTON | 1,000 | | 1,000 |
| WORCESTER | | 250 | 250 |
| YARMOUTH | 0 | | 0 |
| YORK | 20,250 | | 20,250 |
| TOTAL | 161,500 | 111,250 | 272,750 |

Prize Money Entering and Leaving Great Britain

| | 2002 | 2003 | 2004 | 2005 | 2006 |
|--|------------|------------|------------|------------|------------|
| Prize Money WON ABROAD | | | | | |
| by horses trained in Great Britain | 10,713,058 | 10,769,887 | 10,656,247 | 11,777,096 | 15,247,516 |
| Prize Money WON IN GREAT BRITAIN | | | | | |
| by horses trained outside of Great Britain | 5,524,188 | 5,413,201 | 4,115,195 | 8,521,477 | 7,231,583 |



Appearance Money and Owners' Premium Payments

| | 2002 | 2003 | 2004 | 2005 | 2006 |
|-------------------------|------------------|------------------|------------------|------------------|------------------|
| | £ | £ | £ | £ | £ |
| APPEARANCE MONEY | | | | | |
| Sundays | 1,085,100 | 1,316,950 | 2,206,600 | 1,795,330 | 1,925,050 |
| Other Days | 1,200,000 | 1,067,550 | 1,207,950 | 816,510 | 1,150,950 |
| TOTAL | 2,285,100 | 2,384,500 | 3,414,550 | 2,611,840 | 3,076,000 |
| OWNERS' PREMIUMS | | | | | |
| | N/A | N/A | 1,050,205 | 446,860 | 707,854 |

