

SECTION D

FIXTURES, RACES AND PRIZE MONEY

TABLE 1

Fixtures

A fixture is defined as **one** day's racing at **one** course.

TABLE 2

Field Sizes - Flat

The number of Runners (1-5, 6-10, 11-15, 16-20 and 21+) in the number of races shown monthly for Flat races. The number of Walkovers (if any) is shown separately.

TABLE 3

Field Sizes - Jump

The number of Runners (1-5, 6-10, 11-15, 16-20 and 21+) in the number of races shown monthly for Hurdle Races and National Hunt Flat Races, and for Steeple Chases. The number of Walkovers (if any) is shown separately.

TABLE 4

Field Sizes – Flat and Jump

The number of Runners (1-5, 6-10, 11-15, 16-20 and 21+) in the number of races shown as a total for each of the last 5 years for Flat races and Jump races. A separate table for Hurdle Races and National Hunt Flat Races and for Steeple Chases is also shown. The number of Walkovers (if any) is shown separately.

TABLE 5

Flat Racing

Number of Different Horses Which Ran – by Age

An analysis of the number of different horses which ran on the Flat under Rules in each calendar year as 2 years old, 3 years old, 4 years old and over and in total.

Average Number of Runs per Horse that Ran

The number of individual different horses that ran on the Flat divided into the total number of Flat runners for each year.

Number of Different Winners

The number of different horses which won a Flat race under Rules in the calendar year.

Number of Races Divided Overnight

The number of different Flat races that were divided under the Orders and Rules of Racing because the number of horses declared to run exceeded the safety factor/maximum figure or field size limit of the race concerned or, in exceptional circumstances, to provide a sufficient number of races on the day due to other races on the card being abandoned.

Number of Horses Balloted Out or Eliminated

The number of horses taken out of a Flat race under the Orders and Rules of Racing because the number left in at the declaration to run stage exceeded the safety factor/maximum figure or field size limit. These figures are for ALL Flat races, including abandoned races, so will not necessarily equate to the total number of eliminations in table D6, which is only for races that actually took place.

Jump Racing**Number of Different Horses Which Ran**

The total number of different horses which ran under Jump Rules in each calendar year.

Average Number of Runs per Horse that Ran

The number of individual different horses that ran under Jump Rules divided into the total number of Jump runners for each calendar year.

Number of Different Winners

The number of different horses that won a Jump race under Rules in the calendar year.

Number of Races Divided Overnight

The number of different Jump races that were divided under the Orders and Rules of Racing because the number of horses declared to run exceeded the safety factor/maximum figure or field size limit of the race concerned or, in exceptional circumstances, to provide a sufficient number of races on the day due to other races on the card being abandoned.

Number of Horses Balloted Out or Eliminated

The number of horses taken out of a Jump race under the Orders and Rules of Racing because the number left in at the declaration to run stage exceeded the safety factor/maximum figure or field size limit. These figures are for ALL Jump races, including abandoned races, so will not necessarily equate to the total number of eliminations in tables D7, D8 and D9, which are only for races that actually took place.

TABLE 6**Races, Entries, Runners, Eliminations and Prize Money by Type of Race – Flat**

An analysis of the number of Entries, Runners and Eliminations by types of Handicaps and types of Weight-for-Age races, together with Prize Money value and percentage of total Flat Prize Money for each type.

TABLE 7

Races, Entries, Runners, Eliminations and Prize Money by Type of Race – Jump

An analysis of the number of Entries, Runners and Eliminations by types of Handicaps and types of Weight-for-Age races, together with Prize Money value and percentage of total Jump Prize Money for each type.

TABLE 8

Races, Entries, Runners, Eliminations and Prize Money by Distance of Race – Hurdle Races and National Hunt Flat Races

An analysis of the number of Entries, Runners and Eliminations by Distance of Race in Handicaps and Weight-for-Age races for Hurdle Races and National Hunt Flat Races. Averages per race, together with Prize Money value and percentage of total Prize Money for Hurdle Races and National Hunt Flat Races for each Distance category are shown.

TABLE 9

Races, Entries, Runners, Eliminations and Prize Money by Distance of Race – Steeple Chases

An analysis of the number of Entries, Runners and Eliminations by Distance of Race in Handicaps and Weight-for-Age races for Steeple Chases. Averages per race, together with Prize Money value and percentage of total Prize Money for Steeple Chases for each Distance category are shown.

TABLE 10

Prize Money by Source for Pattern Races – Flat Racing

An analysis by Course of the source of Prize Money for Flat Pattern Races.

TABLE 11

Prize Money by Source

An analysis of the total Prize Money for the last 5 years, broken down by source.

TABLE 12

Comparison of Flat and Jump Prize Money Pools

An analysis of Flat Prize Money, Jump Prize Money and Total Prize Money by source.

TABLE 13

Total Prize Money by Racecourse

A comparison of the number of Fixtures and Prize Money by source for each Racecourse. A separate table is shown for Flat Racing, Jump Racing and All Racing.

TABLE 14

Sponsored Number Cloth Income

A breakdown by Racecourse (Flat, Jump and Total) of the income derived from the sponsoring of number cloths.

TABLE 15

Prize Money Won Abroad by Horses Trained in Great Britain

Win and Place Prize Money won abroad (i.e. not England, Scotland or Wales) by horses trained in Great Britain at the time of running.

Prize Money Won in Great Britain by Horses Trained outside of Great Britain

Win and Place Prize Money won in Great Britain by horses showing a foreign Trainer in the Official Return sent in by the Clerk of the Scales from the Racecourse. The amount taken will be the Penalty Value shown.

TABLE 16

Appearance Money

The amount paid in Appearance Money payments for the last 5 years, under the terms of Order 232 and Instruction J11 of the Orders and Rules of Racing. A breakdown is shown of money paid in respect of Sunday Racing and that paid for races run on other days of the week.

Owners' Premiums

The amount paid in Owners' Premiums for British Bred Horses in accordance with Order 197 and Instruction J20 of the Orders and Rules of Racing. The Owners' Premium Scheme ran from January 1st, 2004 until December 31st, 2006.

Prize Money and Race Statistics

Fixtures

		2004		2005		2006		2007		2008
Flat										
Fixtures Programmed	(a)	802	(e)	811	(g)	842	(f,i,l)	868	(q,r)	945
Fixtures That Took Place	(b)	792	(f)	801	(h,i)	832		844	(s,t,u,v,w)	916
Fixtures Abandoned		18		11		10		23		29
Jump										
Fixtures Programmed		536		535		546	(m)	544		556
Fixtures That Took Place	(c)	504		496	(j,k)	506	(n)	482	(x)	505
Fixtures Abandoned		35		39		41		63		56
Mixed										
Fixtures Programmed		3		3		3		3		3
Fixtures That Took Place		3		3	(k)	4	(o)	4	(w)	2
Fixtures Abandoned		0		0		0		0		0
All Racing										
Fixtures Programmed		1,341		1,349		1,391		1,415		1,504
Fixtures That Took Place		1,299		1,300		1,342		1,330		1,423
Fixtures Abandoned		53		50		51		86		85
(Of Which Evening)										
Fixtures Programmed	(d)	223		221		229	(p)	287		372
Fixtures That Took Place		227		217		226		270	(r)	364
Fixtures Abandoned		2		4		3		16	(v)	7

Notes

- (a) 213 All Weather Track fixtures
- (b) 8 Additional Flat fixtures
- (c) 3 Additional Jump fixtures
- (d) 6 Additional Evening fixtures
- (e) 216 All Weather Track fixtures programmed
- (f) 1 Additional AWT Flat fixture
- (g) 297 All Weather Track fixtures
- (h) 2 Additional Flat fixtures
- (i) 2 AWT fixtures cancelled
- (j) 1 additional Jump fixture
- (k) 1 Jump fixture abandoned and replaced by an additional AWT (Mixed) fixture
- (l) 316 All Weather Track fixtures programmed, 8 of which were transferred to Turf
- (m) 2 Additional Jump fixtures
- (n) 1 Jump fixture cancelled
- (o) 1 Additional Mixed (AWT) fixture
- (p) 1 Additional Evening fixture and 2 Evening fixtures cancelled
- (q) 361 All Weather Track Flat fixtures programmed
- (r) 2 All Weather track Flat Evening fixtures withdrawn from the fixture list
- (s) 1 All Weather Track Flat fixture transferred to a Turf course
- (t) 1 Turf/AWT Flat fixture converted to AWT only
- (u) 1 AWT Flat fixture converted to Turf only
- (v) 1 abandoned Flat fixture replaced by an additional fixture
- (w) 1 Mixed fixture converted to a Flat fixture
- (x) 5 additional Jump fixtures, one of which was subsequently abandoned and one of which replaced another abandoned fixture

Numbers of Runners in Races

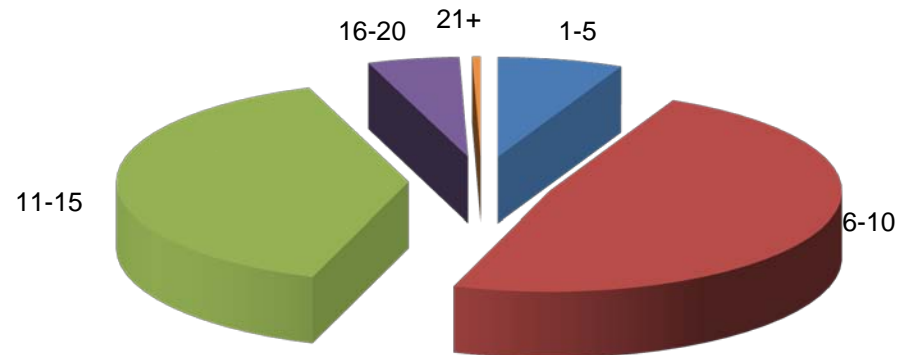
Flat Racing

2008

Runners	Number of Races												Total	% of All Races
	Jan	Feb	Mar	Apr	May	Jun	Jul	Aug	Sep	Oct	Nov	Dec		
1-5	57	42	26	55	59	31	52	37	24	10	15	18	426	7.0%
6-10	237	223	164	259	325	334	415	352	217	161	112	165	2,964	48.4%
11-15	69	51	81	153	260	309	292	277	290	328	168	120	2,398	39.1%
16-20	0	1	9	27	44	47	42	40	50	44	7	0	311	5.1%
21+	0	0	2	0	2	5	3	1	7	6	3	0	29	0.5%
TOTAL	363	317	282	494	690	726	804	707	588	549	305	303	6,128	100.0%

Notes

1 Walkover



Numbers of Runners in Races

Jump Racing

2008

Hurdle Races and National Hunt Flat Races

Runners	Number of Races												Total	% of All Races
	Jan	Feb	Mar	Apr	May	Jun	Jul	Aug	Sep	Oct	Nov	Dec		
1-5	3	3	17	4	7	5	0	2	0	4	10	6	61	3.1%
6-10	46	68	104	53	71	36	38	35	22	39	83	62	657	32.9%
11-15	97	88	94	108	92	63	52	39	48	91	115	94	981	49.2%
16-20	34	43	31	30	15	4	8	5	5	25	39	33	272	13.6%
21+	2	2	9	4	1	0	0	0	0	1	1	3	23	1.2%
TOTAL	182	204	255	199	186	108	98	81	75	160	248	198	1,994	100.0%

Steeple Chases

Runners	Number of Races												Total	% of All Races
	Jan	Feb	Mar	Apr	May	Jun	Jul	Aug	Sep	Oct	Nov	Dec		
1-5	17	29	39	18	16	4	7	8	0	7	23	27	195	14.2%
6-10	67	86	117	71	74	37	32	28	14	58	111	79	774	56.4%
11-15	33	28	30	38	39	14	15	7	17	36	41	38	336	24.5%
16-20	4	9	8	9	6	3	2	1	1	5	6	7	61	4.4%
21+	0	0	3	3	0	0	0	0	0	0	0	0	6	0.4%
TOTAL	121	152	197	139	135	58	56	44	32	106	181	151	1,372	100.0%

Notes

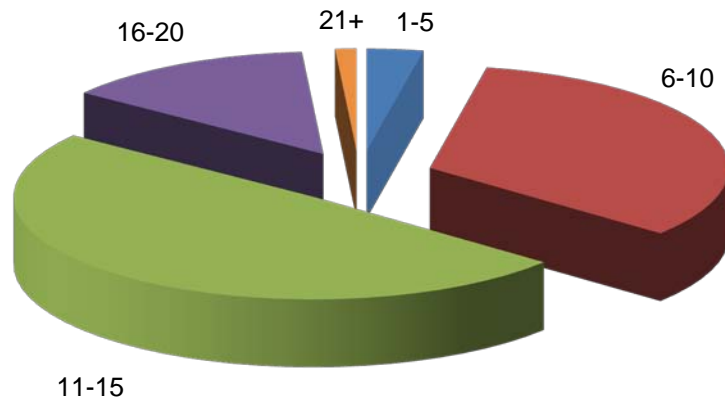
Number of walkovers in brackets

Numbers of Runners in Races

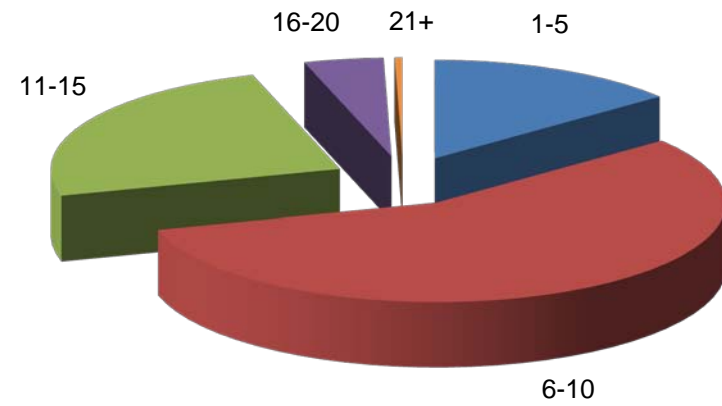
Jump Racing

2008

Hurdle Races and National Hunt Flat Races



Steeple Chases



Analysis of Racing by Size of Field

Flat Races

Runners	2004		2005		2006		2007		2008	
	Number of Races	% of All Races	Number of Races	% of All Races	Number of Races	% of All Races	Number of Races	% of All Races	Number of Races	% of All Races
1-5	257	4.9%	193	3.6%	295	5.3%	256	4.5%	426 ⁽¹⁾	7.0%
6-10	2,096	40.0%	2,014	38.0%	2,367	42.6%	2,536	44.8%	2,964	48.4%
11-15	2,226	42.5%	2,451	46.2%	2,518	45.3%	2,524	44.6%	2,398	39.1%
16-20	615	11.7%	611	11.5%	348	6.3%	310	5.5%	311	5.1%
21+	47	0.9%	32	0.6%	26	0.5%	33	0.6%	29	0.5%
TOTAL	5,241	100.0%	5,301	100.0%	5,554	100.0%	5,659	100.0%	6,128	100.0%

Jump Races

Runners	2004		2005		2006		2007		2008	
	Number of Races	% of All Races	Number of Races	% of All Races	Number of Races	% of All Races	Number of Races	% of All Races	Number of Races	% of All Races
1-5	359 ⁽¹⁾	10.8%	245	7.5%	264	7.8%	317 ⁽¹⁾	9.9%	256	7.6%
6-10	1,584	47.5%	1,560	47.5%	1,565	46.3%	1,375	42.7%	1,431	42.5%
11-15	1,031	30.9%	1,113	33.9%	1,217	36.0%	1,189	36.9%	1,317	39.1%
16-20	314	9.4%	336	10.2%	305	9.0%	312	9.7%	333	9.9%
21+	48	1.4%	33	1.0%	29	0.9%	25	0.8%	29	0.9%
TOTAL	3,336	100.0%	3,287	100.0%	3,380	100.0%	3,218	100.0%	3,366	100.0%

Notes

The number of walkovers is shown in brackets.

Analysis of Racing by Size of Field

Hurdle Races and National Hunt Flat Races

Runners	2004		2005		2006		2007		2008	
	Number of Races	% of All Races	Number of Races	% of All Races	Number of Races	% of All Races	Number of Races	% of All Races	Number of Races	% of All Races
1-5	73	3.8%	57	2.9%	70	3.5%	72	3.8%	61	3.1%
6-10	753	39.1%	724	37.3%	759	37.8%	688	35.9%	657	32.9%
11-15	780	40.5%	849	43.7%	894	44.6%	877	45.8%	981	49.2%
16-20	280	14.5%	287	14.8%	266	13.3%	262	13.7%	272	13.6%
21+	40	2.1%	25	1.3%	17	0.8%	15	0.8%	23	1.2%
TOTAL	1,926	100.0%	1,942	100.0%	2,006	100.0%	1,914	100.0%	1,994	100.0%

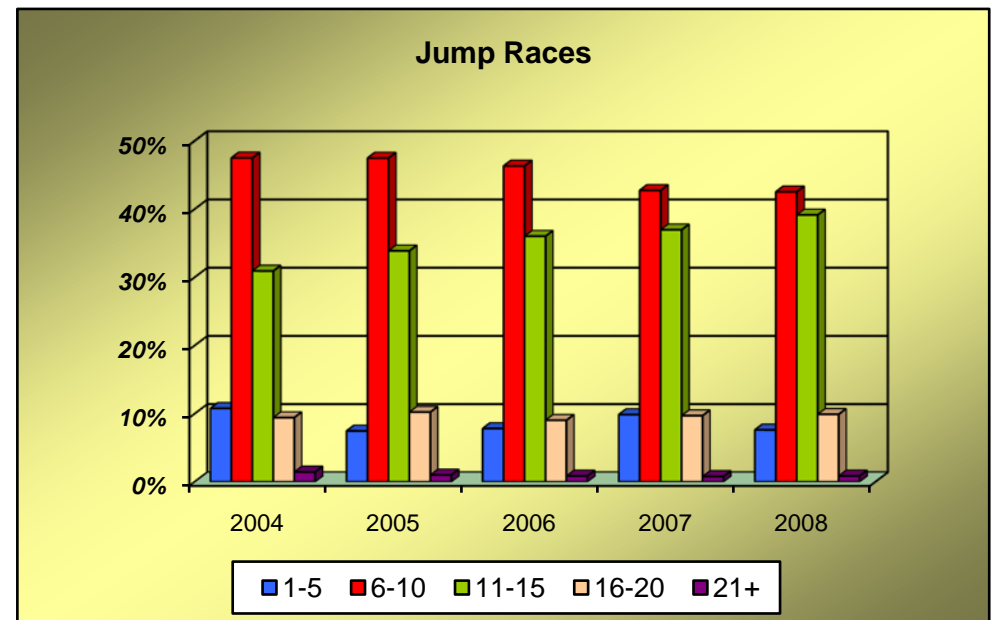
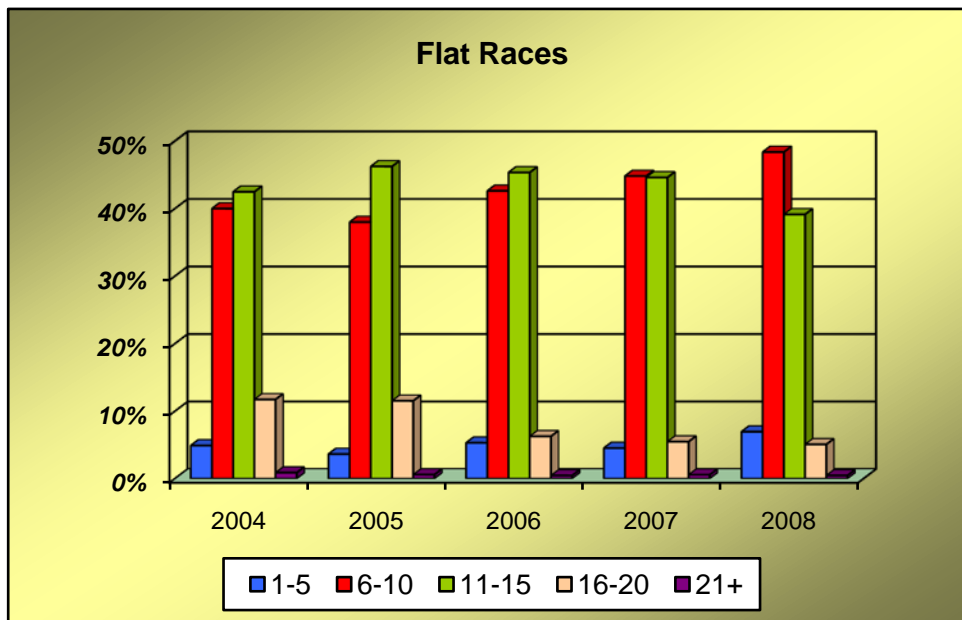
Steeple Chases

Runners	2004		2005		2006		2007		2008	
	Number of Races	% of All Races	Number of Races	% of All Races	Number of Races	% of All Races	Number of Races	% of All Races	Number of Races	% of All Races
1-5	286 ⁽¹⁾	20.3%	188	14.0%	194	14.1%	245 ⁽¹⁾	18.8%	195	14.2%
6-10	831	58.9%	836	62.2%	806	58.7%	687	52.7%	774	56.4%
11-15	251	17.8%	264	19.6%	323	23.5%	312	23.9%	336	24.5%
16-20	34	2.4%	49	3.6%	39	2.8%	50	3.8%	61	4.4%
21+	8	0.6%	8	0.6%	12	0.9%	10	0.8%	6	0.4%
TOTAL	1,410	100.0%	1,345	100.0%	1,374	100.0%	1,304	100.0%	1,372	100.0%

Notes

The number of walkovers is shown in brackets.

Analysis of Racing by Size of Field



Analysis of Racing

Number of Different Horses Which Ran, Number of Different Horses Which Won, Number of Races Divided Overnight, and Number of Horses Balloted Out Or Eliminated

Flat Racing

	2004	2005	2006	2007	2008
No. of Different Horses Which Ran as 2-y-o	3,047	3,100	2,952	3,226	3,313
No. of Different Horses Which Ran as 3-y-o	3,206	3,393	3,388	3,318	3,696
No. of Different Horses Which Ran as 4-y-o +	4,295	4,496	4,614	4,739	4,791
No. of Different Horses Which Ran - TOTAL	10,548	10,989	10,954	11,283	11,800
Average Number of Runs per Horse that Ran	5.6	5.5	5.4	5.3	5.3
No. of Different Horses Which Won a Race	3,442	3,552	3,641	3,782	4,016
No. of Races Divided Overnight	207	184	177	177	165
No. of Horses Balloted Out or Eliminated	12,184	14,758	13,982	12,653	10,876

Jump Racing

	2004	2005	2006	2007	2008
No. of Different Horses Which Ran	9,130	9,315	9,783	9,896	10,050
Average Number of Runs per Horse that Ran	3.7	3.7	3.6	3.4	3.6
No. of Different Horses Which Won a Race	2,241	2,291	2,325	2,267	2,327
No. of Races Divided Overnight	79	58	76	73	59
No. of Horses Balloted Out or Eliminated	1,765	1,996	4,451	4,907	5,292

Racing and Prize Money Statistics

Entries, Runners, Eliminations and Prize Money by Type of Race

Flat Races

2008

Type of Race	No. of Races	Entries		Runners		Eliminations		Value £	% of Total Value
		Total	Average	Total	Average	Total	Average		
HANDICAPS									
Sellers	17	400	23.5	200	11.8	13	0.8	56,750	0.1%
Apprentices	202	4,658	23.1	2,070	10.2	380	1.9	890,200	1.3%
Amateurs	88	2,344	26.6	1,142	13.0	324	3.7	412,550	0.6%
Others	3,359	81,359	24.2	34,776	10.4	7,732	2.3	28,529,779	41.5%
Sub-Total	3,666	88,761	24.2	38,188	10.4	8,449	2.3	29,889,279	43.5%
WEIGHT FOR AGE									
Sellers	251	5,227	20.8	2,486	9.9	408	1.6	785,906	1.1%
Claimers	310	6,440	20.8	2,613	8.4	423	1.4	1,140,736	1.7%
Maidens	1,315	34,356	26.1	13,421	10.2	858	0.7	7,034,778	10.2%
Novices	61	1,149	18.8	352	5.8	0	0.0	432,063	0.6%
Apprentices	22	447	20.3	204	9.3	46	2.1	68,050	0.1%
Amateurs	5	107	21.4	56	11.2	18	3.6	14,100	0.0%
Pattern	138	5,228	37.9	1,421	10.3	9	0.1	18,900,681	27.5%
Others	360	8,787	24.4	3,257	9.0	536	1.5	10,457,064	15.2%
Sub-Total	2,462	61,741	25.1	23,810	9.7	2,298	0.9	38,833,379	56.5%
TOTAL	6,128	150,502	24.6	61,998	10.1	10,747	1.8	68,722,658	100.0%

Notes

The above prize money figures have been rounded up or down as necessary. Consequently, the total prize money may not equate to the sum of the individual parts.

Racing and Prize Money Statistics
Entries, Runners, Eliminations and Prize Money by Type of Race

Jump Races
2008

Type of Race	No. of Races	Entries		Runners		Eliminations		Value £	% of Total Value
		Total	Average	Total	Average	Total	Average		
HURDLE RACES									
HANDICAPS									
Novices'	123	4,250	34.6	1,549	12.6	501	4.1	952,950	2.6%
Sellers	36	958	26.6	470	13.1	161	4.5	112,350	0.3%
Conditional Jockeys	94	3,176	33.8	1,182	12.6	269	2.9	450,800	1.2%
Amateurs	28	828	29.6	321	11.5	91	3.3	129,800	0.3%
Others	518	16,311	31.5	6,214	12.0	1,000	1.9	6,035,832	16.2%
WEIGHT FOR AGE									
Novices'	567	18,188	32.1	6,217	11.0	597	1.1	4,727,997	12.7%
Maidens	195	7,220	37.0	2,482	12.7	715	3.7	863,935	2.3%
Sellers	94	2,639	28.1	1,063	11.3	154	1.6	303,650	0.8%
Conditional Jockeys	17	480	28.2	197	11.6	18	1.1	65,400	0.2%
Amateurs	3	93	31.0	32	10.7	1	0.3	10,400	0.0%
Others	68	1,559	22.9	625	9.2	28	0.4	2,532,088	6.8%
National Hunt Flat Races	251	8,397	33.5	3,203	12.8	774	3.1	938,550	2.5%
Sub-Total	1,994	64,099	32.1	23,555	11.8	4,309	2.2	17,123,752	45.9%
STEEPLE CHASES									
HANDICAPS									
Novices'	142	3,450	24.3	1,319	9.3	89	0.6	1,231,471	3.3%
Sellers	8	152	19.0	82	10.3	14	1.8	27,160	0.1%
Conditional Jockeys	35	850	24.3	359	10.3	12	0.3	200,600	0.5%
Amateurs	11	320	29.1	126	11.5	12	1.1	157,750	0.4%
Hunters	2	31	15.5	22	11.0	0	0.0	20,000	0.1%
Others	653	16,292	24.9	6,632	10.2	479	0.7	10,512,564	28.2%
WEIGHT FOR AGE									
Novices'	354	7,099	20.1	2,426	6.9	17	0.0	4,087,162	11.0%
Maidens	14	312	22.3	128	9.1	2	0.1	77,100	0.2%
Amateurs	3	67	22.3	39	13.0	15	5.0	97,000	0.3%
Hunters	106	2,292	21.6	997	9.4	51	0.5	489,910	1.3%
Others	44	881	20.0	331	7.5	1	0.0	3,253,388	8.7%
Sub-Total	1,372	31,746	23.1	12,461	9.1	692	0.5	20,154,104	54.1%
GRAND TOTAL	3,366	95,845	28.5	36,016	10.7	5,001	1.5	37,277,856	100.0%

Notes

The above prize money figures have been rounded up or down as necessary. Consequently, the total prize money may not equate to the sum of the individual parts.

Racing and Prize Money Statistics

Entries, Runners, Eliminations and Prize Money by Distance of Race

Hurdle Races and National Hunt Flat Races

2008

Distance of Race	No. of Races	Entries		Runners		Eliminations		Value	% of Total
		Total	Average	Total	Average	Total	Average	£	Value
HANDICAPS									
2 Miles	267	8,046	30.1	3,264	12.2	652	2.4	3,013,546	17.6%
2 ¼ Miles	77	2,379	30.9	914	11.9	220	2.9	578,686	3.4%
2 ½ Miles	195	6,724	34.5	2,438	12.5	550	2.8	1,831,200	10.7%
2 ¾ Miles	112	3,847	34.3	1,354	12.1	184	1.6	836,100	4.9%
3 Miles and over	148	4,527	30.6	1,766	11.9	416	2.8	1,422,200	8.3%
Sub-Total	799	25,523	31.9	9,736	12.2	2,022	2.5	7,681,732	44.9%
WEIGHT FOR AGE									
2 Miles	672	21,558	32.1	7,971	11.9	1,540	2.3	5,107,829	29.8%
2 ¼ Miles	130	3,941	30.3	1,451	11.2	174	1.3	566,700	3.3%
2 ½ Miles	239	8,316	34.8	2,724	11.4	424	1.8	2,015,556	11.8%
2 ¾ Miles	76	2,448	32.2	832	10.9	65	0.9	400,635	2.3%
3 Miles and over	78	2,313	29.7	841	10.8	84	1.1	1,351,300	7.9%
Sub-Total	1,195	38,576	32.3	13,819	11.6	2,287	1.9	9,442,020	55.1%
TOTAL	1,994	64,099	32.1	23,555	11.8	4,309	2.2	17,123,752	100.0%

Notes

The above prize money figures have been rounded up or down as necessary. Consequently, the total prize money may not equate to the sum of the individual parts.

Racing and Prize Money Statistics

Entries, Runners, Eliminations and Prize Money by Distance of Race

Steeple Chases

2008

Distance of Race	No. of Races	Entries		Runners		Eliminations		Value £	% of Total Value
		Total	Average	Total	Average	Total	Average		
HANDICAPS									
2 Miles	173	3,318	19.2	1,527	8.8	47	0.3	1,871,257	9.3%
2 ¼ Miles	62	1,325	21.4	541	8.7	34	0.5	609,983	3.0%
2 ½ Miles	214	5,424	25.3	2,125	9.9	139	0.6	2,609,770	12.9%
2 ¾ Miles	85	2,328	27.4	910	10.7	119	1.4	1,059,189	5.3%
3 Miles and over	317	8,700	27.4	3,437	10.8	267	0.8	5,999,345	29.8%
Sub-Total	851	21,095	24.8	8,540	10.0	606	0.7	12,149,545	60.3%
WEIGHT FOR AGE									
2 Miles	106	1,957	18.5	746	7.0	1	0.0	2,154,331	10.7%
2 ¼ Miles	32	687	21.5	253	7.9	0	0.0	302,304	1.5%
2 ½ Miles	144	3,060	21.3	1,093	7.6	15	0.1	1,735,004	8.6%
2 ¾ Miles	61	1,380	22.6	500	8.2	26	0.4	620,227	3.1%
3 Miles and over	178	3,567	20.0	1,329	7.5	44	0.2	3,192,694	15.8%
Sub-Total	521	10,651	20.4	3,921	7.5	86	0.2	8,004,559	39.7%
TOTAL	1,372	31,746	23.1	12,461	9.1	692	0.5	20,154,104	100.0%

Notes

The above prize money figures have been rounded up or down as necessary. Consequently, the total prize money may not equate to the sum of the individual parts.

Prize Money by Source for Pattern Races

Flat Racing

2008

Racecourse	No. of Races	Prize Money Contributions		
		Racecourse Executive plus Sponsors £	Owners' Contribution £	Total Prize Fund £
ASCOT	29	3,486,798	1,675,365	5,162,163
AYR	1	71,250	8,750	80,000
CHESTER	4	240,340	24,660	265,000
DONCASTER	9	1,079,275	411,725	1,491,000
EPSOM DOWNS	5	1,145,925	934,175	2,080,100
GOODWOOD	17	1,425,948	290,475	1,716,423
HAYDOCK PARK	4	273,850	51,150	325,000
KEMPTON PARK	2	101,300	13,700	115,000
LINGFIELD PARK	3	189,290	19,900	209,190
NEWBURY	13	811,615	154,385	966,000
NEWCASTLE	1	45,200	4,800	50,000
NEWMARKET	33	3,241,486	1,480,130	4,721,616
SALISBURY	1	61,250	3,750	65,000
SANDOWN PARK	8	694,666	225,200	919,866
WINDSOR	1	62,000	8,000	70,000
YORK	7	506,445	157,880	664,325
TOTAL	138	13,436,638	5,464,045	18,900,681

NOTES

The above prize money figures have been rounded up or down as necessary. Consequently, the total prize money may not equate to the sum of the individual parts.

Following the abandonment of York's August Meeting, the following races were transferred:
 Gimcrack Stakes to Newbury
 International Stakes, Yorkshire Oaks, Nunthorpe Stakes and Lowther Stakes to Newmarket
 Great Voltigeur Stakes to Goodwood

Sprint Cup transferred from Haydock Park to Doncaster following the abandonment of Haydock's First September Meeting

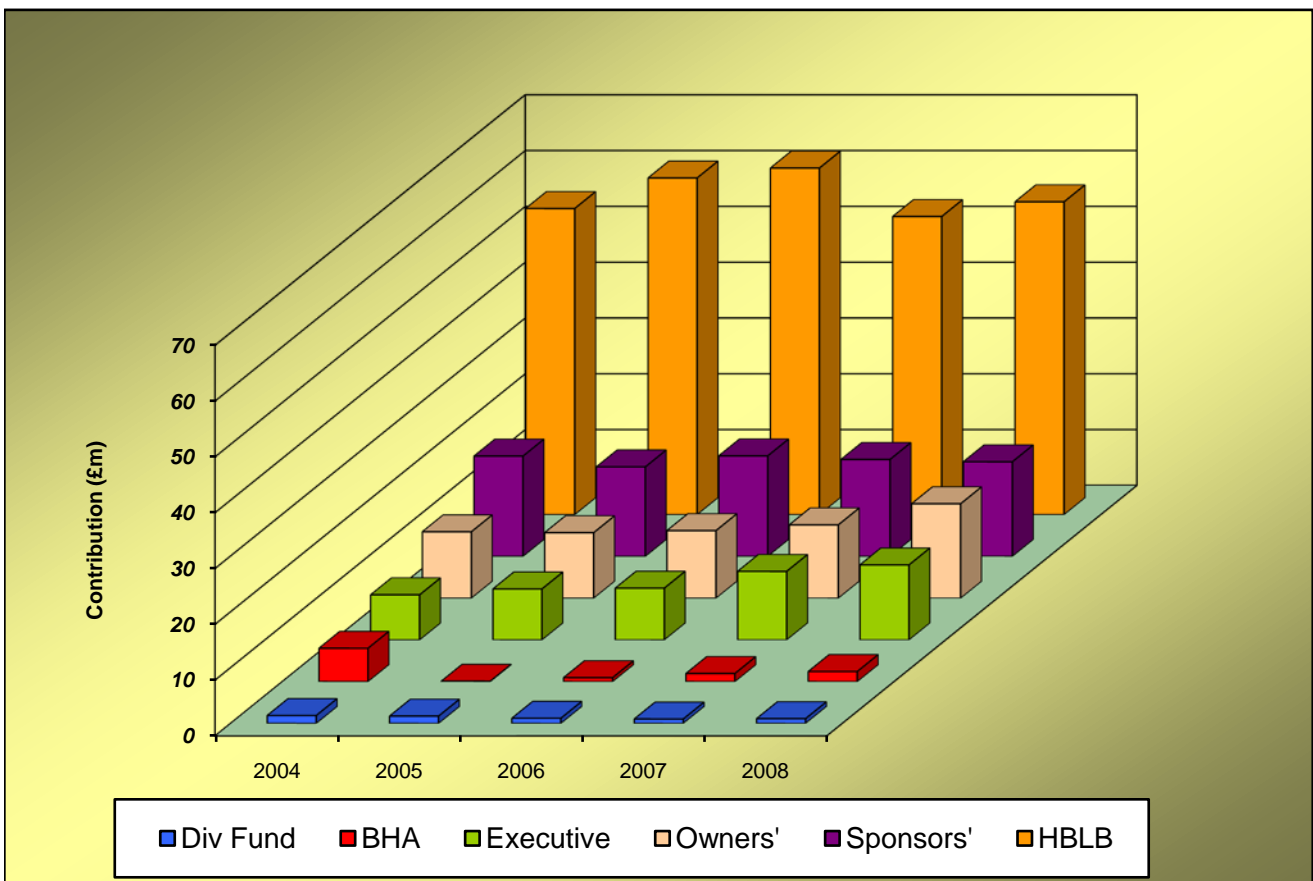
Breakdown of Prize Money by Source

	£ Million						
	Executive	Sponsors'	HBLB	Owners'	BHA	Div Fund	TOTAL
2004	8.07	17.97	54.86	11.89	5.97	1.41	100.17
2005	9.13	16.04	60.32	11.72	0.07	1.30	98.57
2006	9.26	18.00	62.10	12.10	0.71	0.92	103.10
2007	12.27	17.37	53.42	13.13	1.46	0.78	98.43
2008	13.42	16.95	56.06	16.91	1.81	0.85	106.00

Notes

The above figures have been rounded to two decimal places.

Consequently, the TOTAL column will not always equate to the sum of the individual parts.



Comparison of Flat/Jump Prize Money Pools

Prize Money Statistics

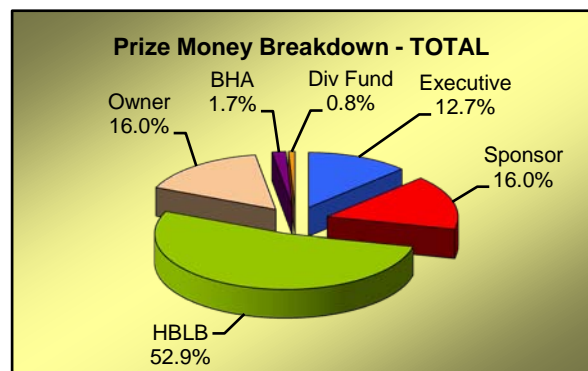
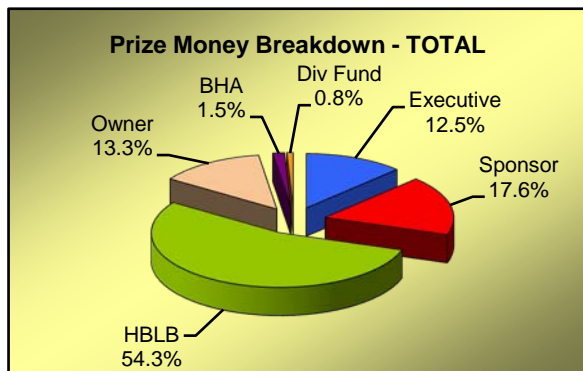
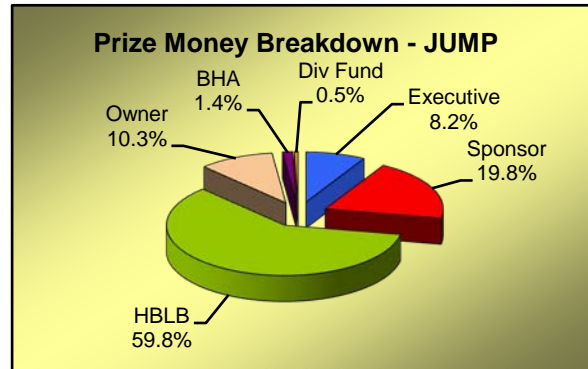
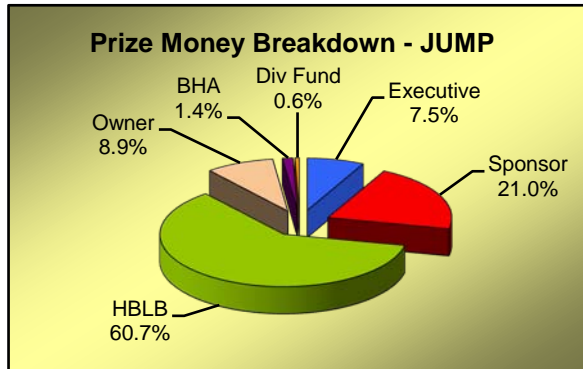
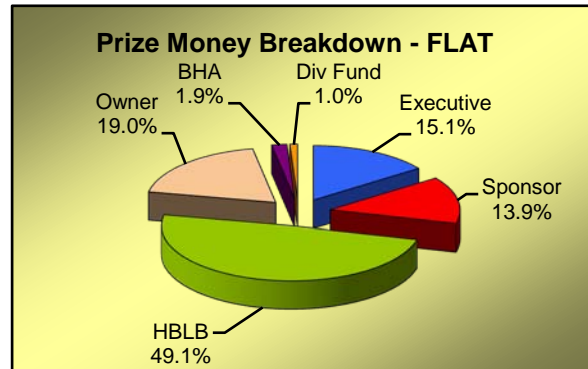
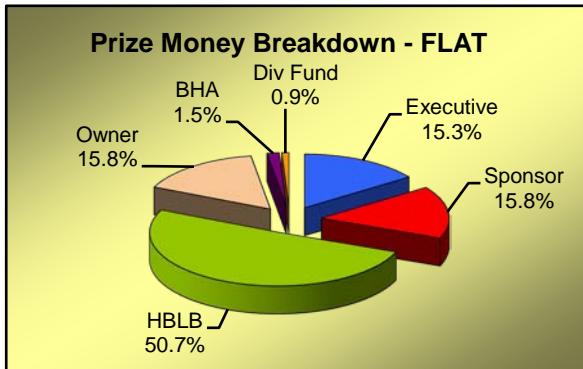
2007

	Flat	Jump	TOTAL
Executive	9,638,803	2,633,956	12,272,759
Sponsor	9,964,913	7,405,328	17,370,241
HBLB	32,022,271	21,400,039	53,422,309
Owner	9,981,827	3,144,112	13,125,939
BHA	976,570	480,500	1,457,070
Div Fund	569,550	209,200	778,750
TOTAL	63,153,933	35,273,135	98,427,068

Prize Money Statistics

2008

	Flat	Jump	TOTAL
Executive	10,372,765	3,052,157	13,424,922
Sponsor	9,571,099	7,379,031	16,950,130
HBLB	33,757,268	22,301,997	56,059,265
Owner	13,064,969	3,844,172	16,909,141
BHA	1,303,256	508,500	1,811,756
Div Fund	653,300	192,000	845,300
TOTAL	68,722,658	37,277,856	106,000,514



Notes

The above figures have been rounded up or down as necessary. Consequently, the totals will not always equate to the sum of the individual parts.

Total Prize Money by Racecourse Flat Racing - 2008

	Fixtures Ran (Aban)	Exec+Spons	HBLB	Owners	BHA	Div Fund	TOTAL
ASCOT	17	3,690,596	2,082,000	2,261,134	82,500	0	8,116,230
AYR	14 (3)	346,040	655,020	158,707	15,000	0	1,174,767
BATH	20	206,382	392,890	66,167	10,000	3,200	678,639
BEVERLEY	20	174,967	573,660	65,488	28,500	6,500	849,115
BRIGHTON	21	90,467	447,250	58,308	0	0	596,025
CARLISLE	7 (1)	106,882	129,020	27,198	0	0	263,100
CATTERICK BRIDGE	17 (1)	84,480	366,290	31,372	7,500	10,500	500,142
CHEPSTOW	9 (4)	57,949	167,320	27,431	2,000	0	254,700
CHESTER	14	573,270	784,840	86,830	66,000	0	1,510,940
DONCASTER	23	1,231,706	1,569,180	932,206	76,500	25,500	3,835,092
EPSOM DOWNS	2	1,255,400	149,400	970,300	6,000	0	2,381,100
FOLKESTONE	15	97,117	301,530	50,745	5,000	15,250	469,642
GOODWOOD	22	1,470,947	1,740,060	535,903	78,500	7,500	3,832,910
GREAT LEIGHS	44 (1)	450,421	1,366,000	136,662	45,000	25,500	2,023,583
HAMILTON PARK	18 (1)	319,179	409,890	56,675	38,000	0	823,744
HAYDOCK PARK	21 (1)	421,734	1,092,310	247,156	52,000	7,500	1,820,700
KEMPTON PARK	85	353,817	2,507,210	333,997	77,527	58,750	3,331,301
LEICESTER	20	194,537	518,793	65,333	49,000	16,500	844,163
LINGFIELD PARK	86	726,282	2,269,510	290,883	62,869	79,300	3,428,844
MUSSELBURGH	17	257,721	500,030	60,674	22,500	0	840,925
NEWBURY	19	730,313	1,393,320	398,627	84,000	81,000	2,687,260
NEWCASTLE	12 (5)	407,145	302,260	103,320	7,000	0	819,725
NEWMARKET	38	3,433,466	3,361,990	4,127,283	196,500	63,000	11,182,239
NOTTINGHAM	19 (1)	84,806	574,900	108,924	41,000	26,000	835,630
PONTEFRACT	15 (1)	207,335	564,690	57,139	30,500	7,000	866,664
REDCAR	17 (2)	144,246	463,460	235,044	6,000	27,550	876,300
RIPON	15	237,655	481,920	43,291	24,500	5,000	792,366
SALISBURY	16	250,325	544,150	83,343	44,500	35,500	957,818
SANDOWN PARK	21	691,721	1,322,505	402,177	37,000	7,000	2,460,403
SOUTHWELL	67	72,338	1,601,340	119,872	2,000	30,650	1,826,200
THIRSK	13 (1)	204,567	339,200	66,183	12,500	9,600	632,050
WARWICK	14 (1)	122,568	364,960	67,572	13,000	12,500	580,600
WINDSOR	26	307,810	652,090	123,777	31,000	13,000	1,127,677
WOLVERHAMPTON	100 (1)	-17,148	2,457,550	239,997	5,000	67,400	2,752,799
YARMOUTH	23 (1)	199,823	440,380	84,779	16,860	12,100	753,942
YORK	11 (4)	757,003	870,350	340,472	27,500	0	1,995,325
TOTAL	918 (29)	19,943,864	33,757,268	13,064,969	1,303,256	653,300	68,722,658

Notes

The above figures have been rounded up or down as necessary. Consequently, the totals will not always equate to the sum of the individual parts. Mixed meetings are included with the Flat figures.

Total Prize Money by Racecourse Jump Racing - 2008

	Fixtures Ran	(Aban)	Exec+Spons	HBLB	Owners	BHA	Div Fund	TOTAL
AINTREE	9		1,648,337	1,180,520	414,741	30,000	0	3,273,598
ASCOT	8		1,086,727	823,640	98,737	45,000	0	2,054,104
AYR	10	(1)	208,890	502,067	136,780	15,000	0	862,737
BANGOR-ON-DEE	14		102,706	508,530	44,514	1,500	0	657,250
CARLISLE	9	(4)	75,265	312,180	40,355	15,000	0	442,800
CARTMEL	6		33,314	152,355	17,714	0	0	203,383
CATTERICK BRIDGE	7	(2)	-1,314	209,420	20,094	0	6,500	234,700
CHEL TENHAM	15	(1)	2,811,654	1,788,550	893,909	70,000	0	5,564,113
CHEPSTOW	15	(1)	151,019	598,175	91,766	25,000	4,000	869,960
DONCASTER	7	(1)	327,044	369,150	57,829	30,000	13,000	797,023
EXETER	17		127,379	695,540	110,217	51,500	7,500	992,136
FAKENHAM	8	(1)	76,584	267,400	0	0	0	343,984
FOLKESTONE	9	(1)	-3,320	291,170	33,650	0	5,500	327,000
FONTWELL PARK	23		124,033	629,350	81,825	0	8,500	843,708
HAYDOCK PARK	5	(2)	564,810	432,320	118,790	29,000	3,750	1,148,670
HEREFORD	11		16,655	356,340	48,143	0	7,750	428,888
HEXHAM	12	(4)	88,069	215,190	29,841	0	0	333,100
HUNTINGDON	19		100,843	680,820	106,983	5,000	18,000	911,646
KELSO	12	(2)	65,454	486,100	34,360	5,000	3,500	594,414
KEMPTON PARK	11		408,536	872,850	135,692	65,000	0	1,482,078
LEICESTER	10	(1)	33,884	394,300	38,555	0	0	466,739
LINGFIELD PARK	4	(3)	-19,675	143,900	18,975	0	0	143,200
LUDLOW	13	(3)	94,154	517,220	48,310	5,000	0	664,684
MARKET RASEN	18	(4)	123,620	722,805	86,875	0	2,500	935,800
MUSSELBURGH	8		32,875	320,220	26,905	5,000	3,000	388,000
NEWBURY	12	(1)	458,663	909,600	168,088	30,000	3,500	1,569,851
NEWCASTLE	11	(2)	-43,498	457,910	47,895	15,000	5,000	482,307
NEWTON ABBOT	17	(2)	40,524	545,970	4,972	0	13,200	604,666
PERTH	13		102,216	537,990	30,694	0	7,000	677,900
PLUMPTON	15	(1)	34,880	469,910	31,890	0	2,000	538,680
SANDOWN PARK	9		554,108	839,880	142,349	25,000	0	1,561,337
SEDFIELD	17	(2)	27,602	446,980	58,914	0	18,000	551,496
SOUTHWELL	12		3,189	358,070	48,305	0	5,000	414,564
STRATFORD-ON-AVON	15	(3)	219,724	570,110	68,290	1,500	5,500	865,124
TAUNTON	13	(1)	71,423	418,270	35,890	0	17,700	543,283
TOWCESTER	16	(2)	39,370	429,215	43,915	0	7,000	519,500
UTTOXETER	21	(3)	127,807	714,780	127,663	5,000	0	975,250
WARWICK	8	(2)	97,358	346,440	57,236	0	0	501,034
WETHERBY	16	(3)	203,538	638,630	86,720	20,000	4,000	952,888
WINCANTON	16	(1)	205,395	779,250	103,169	15,000	16,500	1,119,314
WORCESTER	14	(2)	11,348	368,880	52,622	0	4,100	436,950
TOTAL	505	(56)	10,431,188	22,301,997	3,844,172	508,500	192,000	37,277,856

Notes

The above figures have been rounded up or down as necessary. Consequently, the totals will not always equate to the sum of the individual parts.

Total Prize Money by Racecourse All Racing - 2008

	Fixtures Ran (Aban)	Exec+Spons	HBLB	Owners	BHA	Div Fund	TOTAL
AINTREE	9	1,648,337	1,180,520	414,741	30,000	0	3,273,598
ASCOT	25	4,777,323	2,905,640	2,359,871	127,500	0	10,170,334
AYR	24 (4)	554,930	1,157,087	295,487	30,000	0	2,037,504
BANGOR-ON-DEE	14	102,706	508,530	44,514	1,500	0	657,250
BATH	20	206,382	392,890	66,167	10,000	3,200	678,639
BEVERLEY	20	174,967	573,660	65,488	28,500	6,500	849,115
BRIGHTON	21	90,467	447,250	58,308	0	0	596,025
CARLISLE	16 (5)	182,147	441,200	67,553	15,000	0	705,900
CARTMEL	6	33,314	152,355	17,714	0	0	203,383
CATTERICK BRIDGE	24 (3)	83,166	575,710	51,466	7,500	17,000	734,842
CHELTENHAM	15 (1)	2,811,654	1,788,550	893,909	70,000	0	5,564,113
CHEPSTOW	24 (5)	208,968	765,495	119,197	27,000	4,000	1,124,660
CHESTER	14	573,270	784,840	86,830	66,000	0	1,510,940
DONCASTER	30 (1)	1,558,750	1,938,330	990,035	106,500	38,500	4,632,115
EPSOM DOWNS	2	1,255,400	149,400	970,300	6,000	0	2,381,100
EXETER	17	127,379	695,540	110,217	51,500	7,500	992,136
FAKENHAM	8 (1)	76,584	267,400	0	0	0	343,984
FOLKESTONE	24 (1)	93,797	592,700	84,395	5,000	20,750	796,642
FONTWELL PARK	23	124,033	629,350	81,825	0	8,500	843,708
GOODWOOD	22	1,470,947	1,740,060	535,903	78,500	7,500	3,832,910
GREAT LEIGHS	44 (1)	450,421	1,366,000	136,662	45,000	25,500	2,023,583
HAMILTON PARK	18 (1)	319,179	409,890	56,675	38,000	0	823,744
HAYDOCK PARK	26 (3)	986,544	1,524,630	365,946	81,000	11,250	2,969,370
HEREFORD	11	16,655	356,340	48,143	0	7,750	428,888
HEXHAM	12 (4)	88,069	215,190	29,841	0	0	333,100
HUNTINGDON	19	100,843	680,820	106,983	5,000	18,000	911,646
KELSO	12 (2)	65,454	486,100	34,360	5,000	3,500	594,414
KEMPTON PARK	96	762,353	3,380,060	469,689	142,527	58,750	4,813,379
LEICESTER	30 (1)	228,421	913,093	103,888	49,000	16,500	1,310,902
LINGFIELD PARK	90 (3)	706,607	2,413,410	309,858	62,869	79,300	3,572,044
LUDLOW	13 (3)	94,154	517,220	48,310	5,000	0	664,684
MARKET RASEN	18 (4)	123,620	722,805	86,875	0	2,500	935,800
MUSSELBURGH	25	290,596	820,250	87,579	27,500	3,000	1,228,925
NEWBURY	31 (1)	1,188,976	2,302,920	566,715	114,000	84,500	4,257,111
NEWCASTLE	23 (7)	363,647	760,170	151,215	22,000	5,000	1,302,032
NEWMARKET	38	3,433,466	3,361,990	4,127,283	196,500	63,000	11,182,239
NEWTON ABBOT	17 (2)	40,524	545,970	4,972	0	13,200	604,666
NOTTINGHAM	19 (1)	84,806	574,900	108,924	41,000	26,000	835,630
PERTH	13	102,216	537,990	30,694	0	7,000	677,900
PLUMPTON	15 (1)	34,880	469,910	31,890	0	2,000	538,680
PONTEFRACT	15 (1)	207,335	564,690	57,139	30,500	7,000	866,664
REDCAR	17 (2)	144,246	463,460	235,044	6,000	27,550	876,300
RIPON	15	237,655	481,920	43,291	24,500	5,000	792,366
SALISBURY	16	250,325	544,150	83,343	44,500	35,500	957,818
SANDOWN PARK	30	1,245,828	2,162,385	544,526	62,000	7,000	4,021,739
SEDFIELD	17 (2)	27,602	446,980	58,914	0	18,000	551,496
SOUTHWELL	79	75,527	1,959,410	168,177	2,000	35,650	2,240,764
STRATFORD-ON-AVON	15 (3)	219,724	570,110	68,290	1,500	5,500	865,124
TAUNTON	13 (1)	71,423	418,270	35,890	0	17,700	543,283
THIRSK	13 (1)	204,567	339,200	66,183	12,500	9,600	632,050
TOWCESTER	16 (2)	39,370	429,215	43,915	0	7,000	519,500
UTTOXETER	21 (3)	127,807	714,780	127,663	5,000	0	975,250
WARWICK	22 (3)	219,926	711,400	124,808	13,000	12,500	1,081,634
WETHERBY	16 (3)	203,538	638,630	86,720	20,000	4,000	952,888
WINCANTON	16 (1)	205,395	779,250	103,169	15,000	16,500	1,119,314
WINDSOR	26	307,810	652,090	123,777	31,000	13,000	1,127,677
WOLVERHAMPTON	100 (1)	-17,148	2,457,550	239,997	5,000	67,400	2,752,799
WORCESTER	14 (2)	11,348	368,880	52,622	0	4,100	436,950
YARMOUTH	23 (1)	199,823	440,380	84,779	16,860	12,100	753,942
YORK	11 (4)	757,003	870,350	340,472	27,500	0	1,995,325
TOTAL	1,423 (85)	30,375,052	56,059,265	16,909,141	1,811,756	845,300	106,000,514

Notes

The above figures have been rounded up or down as necessary. Consequently, the totals will not always equate to the sum of the individual parts. Mixed meetings are included with the Flat figures.

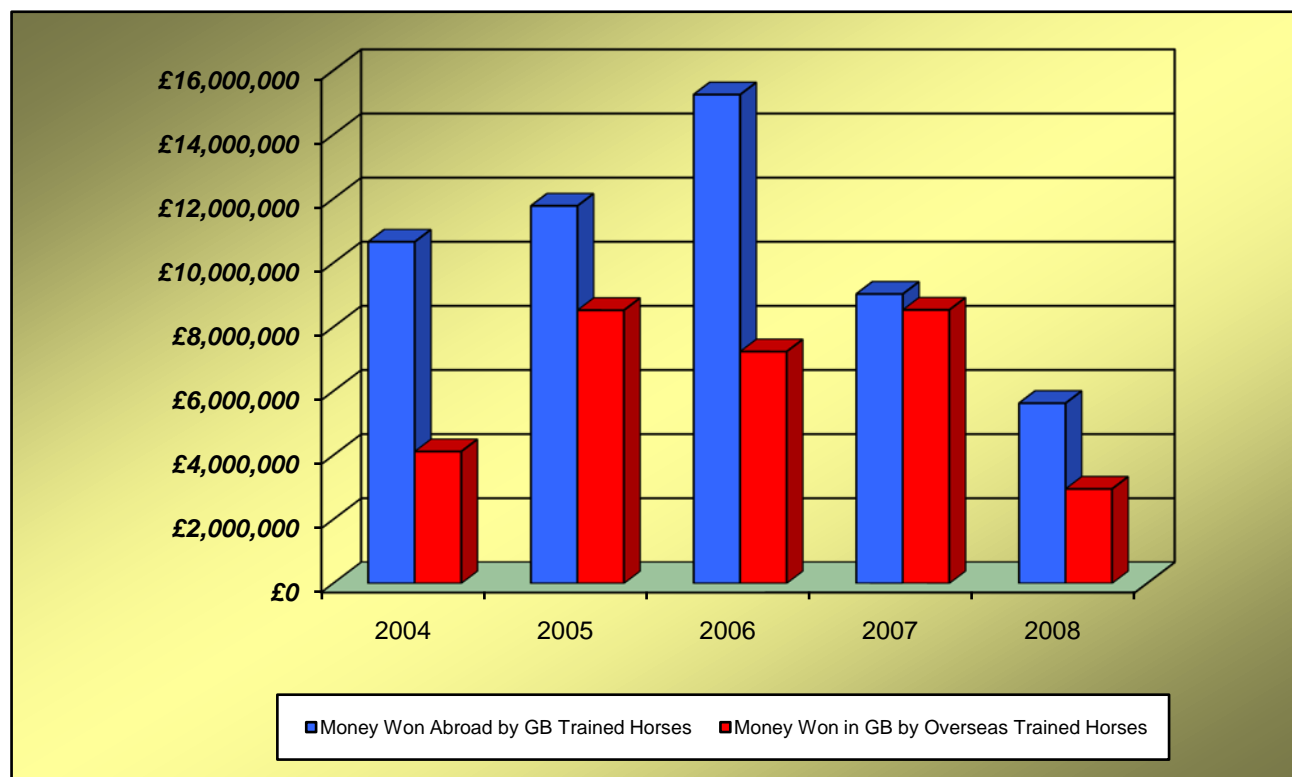
Sponsored Number Cloth Income

2008

	FLAT	JUMP	TOTAL
AINTREE		20,750	20,750
ASCOT	34,750	12,500	47,250
AYR	3,000	2,000	5,000
BANGOR-ON-DEE		500	500
BATH	250		250
BEVERLEY	1,000		1,000
BRIGHTON	0		0
CARLISLE	0	500	500
CARTMEL		0	0
CATTERICK BRIDGE	500	500	1,000
CHELTENHAM		19,750	19,750
CHEPSTOW	0	4,000	4,000
CHESTER	6,750		6,750
DONCASTER	11,250	2,500	13,750
EPSOM DOWNS	4,500		4,500
EXETER		250	250
FAKENHAM		0	0
FOLKESTONE	0	0	0
FONTWELL PARK		500	500
GOODWOOD	14,000		14,000
GREAT LEIGHS	0		0
HAMILTON PARK	1,000		1,000
HAYDOCK PARK	7,750	4,500	12,250
HEREFORD		0	0
HEXHAM		0	0
HUNTINGDON		1,500	1,500
KELSO		500	500
KEMPTON PARK	7,000	9,000	16,000
LEICESTER	0	0	0
LINGFIELD PARK	7,250	0	7,250
LUDLOW		0	0
MARKET RASEN		3,000	3,000
MUSSELBURGH	3,750	0	3,750
NEWBURY	14,250	7,000	21,250
NEWCASTLE	3,750	2,500	6,250
NEWMARKET	33,000		33,000
NEWTON ABBOT		0	0
NOTTINGHAM	3,000		3,000
PERTH		250	250
PLUMPTON		0	0
PONTEFRACT	250		250
REDCAR	8,800		8,800
RIPON	1,500		1,500
SALISBURY	2,000		2,000
SANDOWN PARK	6,500	8,000	14,500
SEDFIELD		0	0
SOUTHWELL	0	0	0
STRATFORD-ON-AVON		500	500
TAUNTON		0	0
THIRSK	0		0
TOWCESTER		250	250
UTTOXETER		2,500	2,500
WARWICK	250	3,500	3,750
WETHERBY		6,000	6,000
WINCANTON		3,000	3,000
WINDSOR	250		250
WOLVERHAMPTON	1,000		1,000
WORCESTER		0	0
YARMOUTH	0		0
YORK	8,250		8,250
TOTAL	185,550	115,750	301,300

Prize Money Entering and Leaving Great Britain

	2004	2005	2006	2007	2008
Prize Money WON ABROAD					
by horses trained in Great Britain	10,656,247	11,777,096	15,247,516	9,028,843	5,621,876
Prize Money WON IN GREAT BRITAIN					
by horses trained outside of Great Britain	4,115,195	8,521,477	7,231,583	8,533,123	2,947,770



Appearance Money and Owners' Premium Payments

	2004	2005	2006	2007	2008
	£	£	£	£	£
APPEARANCE MONEY					
Sundays	2,206,600	1,795,330	1,925,050	1,229,840	1,069,450
Other Days	1,207,950	816,510	1,150,950	318,800	398,500
TOTAL	3,414,550	2,611,840	3,076,000	1,548,640	1,467,950
OWNERS' PREMIUMS					
	1,050,205	446,860	707,854	N/A	N/A

