

BRITISH RACING STATISTICS 2012

INTRODUCTION

The specification details of all tables included in British Racing Statistics 2012 are provided at the front of each section.

These statistics are only responsible for providing basic information. Any comparisons of figures and expressions of percentages, trends, etc. must be the responsibility of the user of these tables.



B.H.A. Editorial Department,
Weatherbys Ltd,
Sanders Road,
Wellingborough,
Northants,
NN8 4BX

Tel: 01933 440077
Fax: 01933 304787
Email: editorial@weatherbys.co.uk

BRITISH RACING STATISTICS 2012

TABLE OF CONTENTS

LEADING PERFORMERS

SECTION A	BREEDING
SECTION B	OWNERSHIP
SECTION C	TRAINING AND RIDING
SECTION D	FIXTURES, RACES AND PRIZE MONEY
SECTION E	RACECOURSES
SECTION F	HORSE RACE BETTING AND LEVY
SECTION G	POINT TO POINT RACING
SECTION H	STABLE EMPLOYEES

The specification details of all tables are included at the beginning of each section.

LEADING PERFORMERS

Group 1 Flat Race Winners
Major Jump Race Winners
Leading Horses – Flat
Leading Horses – Jump
Leading Jockeys – Flat
Leading Jockeys – Jump
Leading Trainers – Flat
Leading Trainers – Jump

SECTION A – BREEDING

Table

Exported Horses	A1
Exported Horses - Destination	A2
Foals	A1
Mares	A1
Names Registered	A1
Stallions	A1

SECTION B – OWNERSHIP

Table

Business Partnerships Registered	B1
Colours Registered	B1
Companies Registered	B1
Joint Ownership Names Registered	B1
Joint Ownerships Registered	B1
Leases Registered	B1
Owners Registered	B1
Ownership Statistics – Number of Owners by the Number of Horses They Own	B2
Ownership Statistics – Number of Owners with a Horse in Training by Type of Ownership	B3
Racing Partnerships Registered	B1

SECTION C – TRAINING AND RIDING

Table

Horses in Training – All Horses	C2
Horses in Training – Dual-Purpose Horses	C2
Horses in Training – Flat-Only Horses	C2
Horses in Training – Hunter Chasers	C2
Horses in Training – Jump-Only Horses	C2
Horses in Training – Type of Ownership	C3
Permit Holders	C1
Riders – Amateur	C1
Riders – Professional by Type of Licence Held	C1
Trainers – Size of Yards – All Trainers	C4
Trainers – Size of Yards – Licensed Trainers	C4
Trainers – Size of Yards – Permit Holders & Hunter Trainers	C4
Trainers – Type of Licence Held	C1

SECTION D – FIXTURES, RACES AND PRIZE MONEY

Table

Abandoned Fixtures	D1
Additional Fixtures	D1
Appearance Money Payments	D16
Balloting Out and Eliminations	D5
Divided Races	D5
Eliminations – Flat – by Race Type	D6
Eliminations – Hurdle Races & NHF Races – by Distance	D8
Eliminations – Jump – by Race Type	D7
Eliminations – Steeple Chases – by Distance	D9
Entries – Flat – by Race Type	D6
Entries – Hurdle Races & NHF Races – by Distance	D8
Entries – Jump – by Race Type	D7
Entries – Steeple Chases – by Distance	D9
Evening Fixtures	D1
Field Sizes – Flat	D2, D4
Field Sizes – Hurdle Races & NHF Races	D3, D4
Field Sizes – Jump	D4
Field Sizes – Steeple Chases	D3, D4
Fixtures	D1
Owners' Premium Payments	D16
Prize Money – Flat – by Race Type	D6
Prize Money – Flat – by Racecourse	D13
Prize Money – Flat – by Source	D12
Prize Money – Flat – by Source for Flat Pattern Races	D10
Prize Money – Hurdle Races & NHF Races – by Distance	D8
Prize Money – Jump – by Race Type	D7
Prize Money – Jump – by Racecourse	D13
Prize Money – Jump – by Source	D12
Prize Money – Steeple Chases – by Distance	D9
Prize Money – Total – by Racecourse	D13
Prize Money – Total – by Source	D11, D12
Prize Money – Won Abroad by British-Trained Horses	D15
Prize Money – Won in Great Britain by Overseas-Trained Horses	D15
Races – Flat – by Race Type	D6
Races – Hurdle Races & NHF Races – by Distance	D8
Races – Jump – by Race Type	D7
Races – Steeple Chases – by Distance	D9
Runners – Different Horses That Ran	D5
Runners – Flat – by Race Type	D6
Runners – Hurdle Races & NHF Races – by Distance	D8
Runners – Jump – by Race Type	D7
Runners – Steeple Chases – by Distance	D9
Sponsored Number Cloth Income	D14
Walkovers – Flat	D2, D4
Walkovers – Hurdle Races & NHF Races	D3, D4
Walkovers – Jump	D4
Walkovers – Steeple Chases	D3, D4
Winners – Individual Different Horses	D5

SECTION E – RACECOURSES

Table

Abandoned Fixtures – by Course - All	E1
Abandoned Fixtures – by Course - Flat	E1
Abandoned Fixtures – by Course - Jump	E1
Attendances – by Course - All	E1
Attendances – by Course - Flat	E1
Attendances – by Course - Jump	E1
Attendances – by Day of the Week	E3
Attendances – by Month	E2
Attendances – Total	E2, E3
Entries – by Course - All	E1
Entries – by Course - Flat	E1
Entries – by Course - Jump	E1
Fixtures Held – by Course - All	E1
Fixtures Held – by Course - Flat	E1
Fixtures Held – by Course - Jump	E1
Races Run – by Course - All	E1
Races Run – by Course - Flat	E1
Races Run – by Course - Jump	E1
Runners – by Course - All	E1
Runners – by Course - Flat	E1
Runners – by Course - Jump	E1

SECTION F – HORSERACE BETTING AND LEVY

Table

Levy Board – Income	F1
Levy Board – Expenditure	F1

SECTION G – POINT TO POINT RACING

Table

Abandonments	G1
Courses	G1
Entries – Total	G2
Fixtures	G1
Hunters' Certificates	G2
Postponements	G1
Races – by Race Type	G2
Races – Total	G2
Re-Arrangements	G1
Runners – by Race Type	G2
Runners – Total	G2

SECTION H – STABLE EMPLOYEES

Table

Age Groups	H3
Employed Full Time	H1
Employed Part Time	H1
Employed with Licensed Trainers	H1
Employed with Permitted Trainers	H1
Job Category	H2
Total	H1

LEADING PERFORMERS

Winners of UK Group 1 Flat Races

A full list of all the winning horses in UK Group 1 Flat races run during the 2012 Flat Racing season.

Winners of Major UK Jump Races

A full list of all the winning horses in major UK Jump races scheduled to be run during the calendar year of 2012.

Leading Horses by Prize Money Won in Great Britain

The Top 10 Horses during the calendar year of 2012, Flat and Jump, in order of Total Prize Money won (Win and Place) in races taking place in Great Britain. The name of the Owner and Trainer of the horse is also shown, along with the single performance that earned the greatest amount of Prize Money.

Leading Jockeys by Prize Money Won in Great Britain

The Top 10 Jockeys during the calendar year of 2012, Flat and Jump, in order of Total Prize Money won (Win and Place) in races taking place in Great Britain. The number of Rides, number of Winners, number of Placed Horses and Strike Rate (percentage of Winners to Runners) is also shown. Total Prize Money is the sum of the Penalty Values of the Races concerned (not the Jockey's percentage). Places are defined as performances for which Prize Money was earned, other than for Winning a Race.

Leading Trainers by Prize Money Won in Great Britain

The Top 10 Trainers during the calendar year of 2012, Flat and Jump, in order of Total Prize Money won (Win and Place) in races taking place in Great Britain. The number of Starters, number of Winners, number of Placed Horses and Strike Rate (percentage of Winners to Runners) is also shown. Total Prize Money is the sum of the Penalty Values of the Races concerned (not the Trainer's percentage). Places are defined as performances for which Prize Money was earned, other than for Winning a Race.

Winners of UK Group 1 Flat Races in 2012

Race	Distance	2012 Date	Racecourse	Value	1st Prize	Winner
Qipco 2000 Guineas Stakes (The 204th Running) (British Champions Series)	1m	05 May 2012	Newmarket	£376,500	£213,513	Camelot
Qipco 1000 Guineas Stakes (British Champions Series)	1m	06 May 2012	Newmarket	£376,500	£213,513	Homecoming Queen (IRE)
JLT Lockinge Stakes (British Champions Series)	1m	19 May 2012	Newbury	£175,000	£99,243	Frankel
Investec Oaks	1m 4f 10y	01 June 2012	Epsom Downs	£366,500	£207,842	Was (IRE)
Investec Derby	1m 4f 10y	02 June 2012	Epsom Downs	£1,325,000	£751,408	Camelot
Diamond Jubilee Coronation Cup (Sponsored by Investec)	1m 4f 10y	02 June 2012	Epsom Downs	£300,000	£170,130	St Nicholas Abbey (IRE)
King's Stand Stakes (British Champions Series & Global Sprint Challenge)	5f	19 June 2012	Royal Ascot	£350,000	£198,485	Little Bridge (NZ)
Queen Anne Stakes (British Champions Series)	1m	19 June 2012	Royal Ascot	£350,000	£198,485	Frankel
St James's Palace Stakes (British Champions Series)	1m	19 June 2012	Royal Ascot	£295,000	£167,295	Most Improved (IRE)
150th Anniversary of the Prince of Wales's Stakes (British Champions Series)	1m 2f	20 June 2012	Royal Ascot	£500,000	£283,550	So You Think (NZ)
Gold Cup (British Champions Series)	2m 4f	21 June 2012	Royal Ascot	£350,000	£198,485	Colour Vision (FR)
Coronation Stakes (British Champions Series)	1m	22 June 2012	Royal Ascot	£272,500	£154,535	Fallen For You
Diamond Jubilee Stakes (British Champions Series & Global Sprint Challenge)	6f	23 June 2012	Royal Ascot	£500,000	£283,550	Black Caviar (AUS)
Coral-Eclipse (British Champions' Series)	1m 2f 7y	07 July 2012	Sandown Park	£426,000	£241,585	Nathaniel (IRE)
Etihad Airways Falmouth Stakes (British Champions' Series)	1m	13 July 2012	Newmarket	£160,000	£90,736	Giofra
Darley July Cup (British Champions' Series & Global Sprint Challenge)	6f	14 July 2012	Newmarket	£452,000	£256,329	Mayson
King George VI and Queen Elizabeth Stakes (Sponsored by Betfair) (British Champions' Series)	1m 4f	21 July 2012	Ascot	£1,000,000	£567,100	Danedream (GER)
Qipco Sussex Stakes (British Champions' Series)	1m	01 August 2012	Goodwood	£316,500	£179,487	Frankel
Markel Insurance Nassau Stakes (British Champions' Series)	1m 1f 192y	04 August 2012	Goodwood	£185,000	£104,914	The Fugue
Juddmonte International Stakes (British Champions' Series)	1m 2f 88y	22 August 2012	York	£725,000	£411,148	Frankel
Darley Yorkshire Oaks (British Champions' Series)	1m 4f	23 August 2012	York	£310,000	£175,801	Shareta (IRE)
Coolmore Nunthorpe Stakes (British Champions' Series)	5f	24 August 2012	York	£250,000	£141,775	Ortensia (AUS)
Betfred Sprint Cup (British Champions' Series)	6f	08 September 2012	Haydock Park	£225,000	£127,598	Society Rock (IRE)
Ladbroke's St Leger Stakes (British Champions' Series)	1m 6f 132y	15 September 2012	Doncaster	£550,000	£311,905	Encke (USA)
Shadwell Fillies' Mile	1m	28 September 2012	Newmarket	£163,500	£92,721	Certify (USA)
Kingdom of Bahrain Sun Chariot Stakes	1m	29 September 2012	Newmarket	£160,000	£90,736	Siyouma (IRE)
Jaguar Cars Cheveley Park Stakes	6f	29 September 2012	Newmarket	£163,500	£92,721	Rosdhu Queen (IRE)
Dubai Dewhurst Stakes	7f	13 October 2012	Newmarket	£300,000	£170,130	Dawn Approach (IRE)
Vision.ae Middle Park Stakes	6f	13 October 2012	Newmarket	£150,000	£85,065	Reckless Abandon
Qipco Champion Stakes (British Champions Middle Distance)	1m 2f	20 October 2012	Ascot	£1,300,000	£737,230	Frankel
Queen Elizabeth II Stakes (Sponsored by Qipco) (British Champions Mile)	1m	20 October 2012	Ascot	£1,000,000	£567,100	Excelebration (IRE)
Racing Post Trophy	1m	27 October 2012	Doncaster	£216,000	£122,494	Kingsbarns (IRE)

Winners of Major UK Jump Races in 2012

Race	Distance	2012 Date	Racecourse	Value	1st Prize	Winner
2011-2012 SEASON						
32Red Hurdle Race (A Novices' Hurdle Race) (Registered as the Tolworth Hurdle Race)	2m 110y	07 January 2012	Sandown Park	£30,000	£17,286	Captain Conan (FR)
Betfred Classic Steeple Chase (A Handicap)	3m 5f	14 January 2012	Warwick	£55,000	£31,323	Hey Big Spender (IRE)
25th Anniversary of the Victor Chandler Steeple Chase (Registered as The Clarence House Steeple Chase)	2m 1f	21 January 2012	Ascot	£105,000	£59,135	Somersby (IRE)
Betfair Novices' Steeple Chase (Registered as The Scilly Isles Novices' Chase)	2m 4f	17 February 2012	Newbury	£25,000	£14,305	For Non Stop (IRE)
		<i>(re-scheduled from Sandown Park 04 February 2012)</i>				
Betfair Hurdle Race (Handicap)	2m 110y	17 February 2012	Newbury	£152,500	£86,849	Zarkandar (IRE)
		<i>(re-scheduled from 11 February 2012)</i>				
Betfair Ascot Steeple Chase	2m 5f 110y	18 February 2012	Ascot	£150,000	£84,478	Riverside Theatre
Betfred Grand National Trial (A Handicap Steeple Chase)	3m 4f	18 February 2012	Haydock Park	£75,000	£42,713	Giles Cross (IRE)
williamhill.com Dovecote Novices' Hurdle Race	2m	25 February 2012	Kempton Park	£21,200	£12,130	Grumeti
Stan James Champion Hurdle Challenge Trophy	2m 110y	13 March 2012	Cheltenham	£370,000	£210,715	Rock On Ruby (IRE)
Racing Post Arkle Challenge Trophy Steeple Chase	2m	13 March 2012	Cheltenham	£130,000	£74,035	Sprinter Sacre (FR)
William Hill Supreme Novices' Hurdle Race	2m 110y	13 March 2012	Cheltenham	£100,000	£56,950	Cinders And Ashes
sportingbet.com Queen Mother Champion Steeple Chase	2m	14 March 2012	Cheltenham	£320,000	£182,240	Finian's Rainbow (IRE)
RSA Steeple Chase	3m 110y	14 March 2012	Cheltenham	£130,000	£74,035	Bobs Worth (IRE)
Neptune Investment Management Novices' Hurdle Race (Registered As The Baring Bingham Novices' Hurdle Race)	2m 5f	14 March 2012	Cheltenham	£100,000	£56,950	Simonsig
Weatherbys Champion Bumper (A Standard Open National Hunt Flat Race)	2m 110y	14 March 2012	Cheltenham	£55,000	£31,323	Champagne Fever (IRE)
Ryanair Steeple Chase (Registered As The Festival Trophy Steeple Chase)	2m 5f	15 March 2012	Cheltenham	£260,000	£148,070	Riverside Theatre
Ladbroke's World Hurdle Race	3m	15 March 2012	Cheltenham	£260,000	£148,070	Big Buck's (FR)
Betfred Cheltenham Gold Cup Steeple Chase	3m 2f 110y	16 March 2012	Cheltenham	£500,000	£284,750	Synchronised (IRE)
JCB Triumph Hurdle Race	2m 1f	16 March 2012	Cheltenham	£100,000	£56,950	Countrywide Flame
Albert Bartlett Novices' Hurdle Race (Registered as The Spa Novices' Hurdle Race)	3m	16 March 2012	Cheltenham	£100,000	£56,950	Brindisi Breeze (IRE)
Betfred Bowl Steeple Chase	3m 1f	12 April 2012	Aintree	£150,000	£84,405	Follow The Plan (IRE)
Matalan Anniversary 4-y-o Juvenile Hurdle Race	2m 110y	12 April 2012	Aintree	£100,000	£56,270	Grumeti
BGC Partners Liverpool Hurdle Race	3m 110y	12 April 2012	Aintree	£100,000	£56,736	Big Buck's (FR)
John Smith's Melling Steeple Chase	2m 4f	13 April 2012	Aintree	£175,000	£98,558	Finian's Rainbow (IRE)
John Smith's Sefton Novices' Hurdle Race	3m 110y	13 April 2012	Aintree	£100,000	£56,270	Lovcen (GER)
John Smith's Grand National Steeple Chase (Handicap)	4m 4f	14 April 2012	Aintree	£975,000	£547,268	Neptune Collonges (FR)
John Smith's Aintree Hurdle	2m 4f	14 April 2012	Aintree	£160,000	£91,096	Oscar Whisky (IRE)
John Smith's Maghull Novices' Steeple Chase	2m	14 April 2012	Aintree	£100,000	£56,270	Sprinter Sacre (FR)
Coral Scottish Grand National Handicap Steeple Chase	4m 110y	21 April 2012	Ayr	£180,000	£102,510	Merigo (FR)
bet365 Gold Cup Steeple Chase (Handicap)	3m 5f 110y	28 April 2012	Sandown Park	£150,000	£85,425	Tidal Bay (IRE)
2012-2013 SEASON						
Paddy Power Gold Cup Steeple Chase (A Handicap)	2m 4f 110y	17 November 2012	Cheltenham	£160,000	£91,120	Al Ferof (FR)
Betfair Steeple Chase (Registered as The Lancashire Chase)	3m	24 November 2012	Haydock Park	£200,000	£112,540	Silviniaco Conti (FR)
Hennessy Gold Cup Steeple Chase (Handicap)	3m 2f 110y	01 December 2012	Newbury	£150,000	£85,425	Bobs Worth (IRE)
StanJames.com Fighting Fifth Hurdle Race	2m	01 December 2012	Newcastle	£104,000	£58,521	Countrywide Flame
Sportingbet Tingle Creek Steeple Chase	2m	08 December 2012	Sandown Park	£120,000	£68,340	Sprinter Sacre (FR)
Markel Insurance Henry VIII Novices' Steeple Chase	2m	08 December 2012	Sandown Park	£37,000	£21,072	Captain Conan (FR)
Paul Stewart IronSpine Charity Challenge Gold Cup (A Handicap Steeple Chase)	2m 5f	15 December 2012	Cheltenham	£100,000	£56,950	Unioniste (FR)
Long Walk Hurdle Race	3m 1f	22 December 2012	Ascot	£75,000	£42,203	Reve de Sivola (FR)
William Hill King George VI Steeple Chase	3m	26 December 2012	Kempton Park	£200,000	£113,900	Long Run (FR)
williamhill.com Christmas Hurdle Race	2m	26 December 2012	Kempton Park	£85,000	£48,408	Darlan
Kauto Star Feltham Novices' Steeple Chase (In memory of Nigel Clark)	3m	26 December 2012	Kempton Park	£40,000	£22,780	Dynaste (FR)
Coral Welsh National (A Handicap Steeple Chase)	3m 5f 110y	27 December 2012	Chepstow	£90,000		
coral.co.uk Future Champions Finale Juvenile Hurdle Race	2m 110y	27 December 2012	Chepstow	£29,500		
Betfred Mobile Sports Challow Novices' Hurdle Race	2m 5f	29 December 2012	Newbury	£30,000	£17,165	Taquin du Seuil (FR)

Major Winners - Jump

Leading Horses Prize Money won in Great Britain

Flat - 2012

Horse	Owner	Trainer	Best Performance	Total Prize Money
1. Frankel (GB)	Mr K. Abdullah	Sir Henry Cecil	Qipco Champion Stakes (British Champions Middle Distance) (1st) - Ascot, October 20th	£1,625,592
2. Camelot (GB)	Mr D. Smith, Mrs J. Magnier, Mr M. Tabor	Aidan O'Brien	Investec Derby (1st) - Epsom Downs, June 2nd	£1,083,171
3. Excelebration (IRE)	Mr D. Smith, Mrs J. Magnier, Mr M. Tabor	Aidan O'Brien	Queen Elizabeth II Stakes (1st) - Ascot, October 20th	£679,975
4. Nathaniel (IRE)	Lady Rothschild & Newsell	John Gosden	Coral-Eclipse (1st) - Sandown Park, July 7th	£596,465
5. Danedream (GER)	Gestut Burg Eberstein & Teruya Yoshida	P. Schiergen	King George VI and Queen Elizabeth Stakes (1st) - Ascot, July 21st	£567,100
6. Farhh (GB)	Godolphin	Saeed bin Suroor	Juddmonte International Stakes (2nd) - York, August 22nd	£382,412
7. Main Sequence (USA)	Niarchos Family	David Lanigan	Investec Derby (2nd) - Epsom Downs, June 2nd	£377,390
8. St Nicholas Abbey (IRE)	Mr D. Smith, Mrs J. Magnier, Mr M. Tabor	Aidan O'Brien	Diamond Jubilee Coronation Cup (1st) - Epsom Downs, June 2nd	£355,740
9. Encke (USA)	Godolphin	Mahmood Al Zarooni	Ladbrokes St Ledger Stakes (1st) - Doncaster, September 15th	£348,585
10. Mayson (GB)	Mr David W. Armstrong	Richard Fahey	Darley July Cup (1st) - Newmarket, July 14th	£311,264

Leading Horses **Prize Money won in Great Britain**

Jump - 2012

Horse	Owner	Trainer	Best Performance	Total Prize Money
1. Neptune Collonges (FR)	Mr J. Hales & Miss L. Hales	Paul Nicholls	John Smith's Grand National Steeple Chase (Handicap) (1st) - Aintree, April 14th	£572,535
2. Finian's Rainbow (IRE)	Mr Michael Buckley	Nicky Henderson	sportingbet.com Queen Mother Champion Steeple Chase (1st) - Cheltenham, March 14th	£305,774
3. Synchronised (IRE)	Mr John P. McManus	Jonjo O'Neill	Betfred Cheltenham Gold Cup Steeple Chase (1st) - Cheltenham, March 16th	£284,750
4. Big Buck's (FR)	The Stewart Family	Paul Nicholls	Ladbroke's World Hurdle (1st) - Cheltenham, March 15th	£253,214
5. Rock On Ruby (IRE)	The Festival Goers	Paul Nicholls til 31/07/2012 Harry Fry from 28/09/2012	Stan James Champion Hurdle Challenge Trophy (1st) - Cheltenham, March 13th	£242,665
6. Sunnyhillboy (IRE)	Mr John P. McManus	Jonjo O'Neill	John Smith's Grand National Steeple Chase (Handicap) (2nd) - Aintree, April 14th	£237,947
7. Riverside Theatre (GB)	Jimmy Nesbitt Partnership	Nicky Henderson	Ryanair Steeple Chase (1st) - Cheltenham, March 15th	£235,228
8. Long Run (FR)	Mr Robert Waley-Cohen	Nicky Henderson	William Hill King George VI Steeple Chase (1st) - Kempton Park, December 26th	£226,885
9. Sprinter Sacre (FR)	Mrs Caroline Mould	Nicky Henderson	Racing Post Arkle Challenge Trophy Steeple Chase (1st) - Cheltenham, March 13th	£215,730
10. Silviniaco Conti (FR)	Potensis Limited & Mr Chris Giles	Paul Nicholls	Betfair Steeple Chase (1st) - Haydock Park, November 11th	£213,627

**Leading Jockeys
Prize Money won in Great Britain**

Flat - 2012

Jockey	Number of Rides	Number of Winners	Number of Placed Horses	Strike Rate*	Total Prize Money (Win and Place)
1. William Buick	696	130	288	18.7%	£3,517,548
2. Joseph O'Brien	50	14	27	28.0%	£2,916,506
3. Tom Queally	618	76	198	12.3%	£2,719,985
4. Ryan Moore	603	116	261	19.2%	£2,468,765
5. Richard Hughes	859	177	346	20.6%	£2,164,715
6. Frankie Dettori	398	51	191	12.8%	£1,901,882
7. Paul Hanagan	801	122	323	15.2%	£1,857,230
8. Kieren Fallon	651	87	242	13.4%	£1,701,670
9. Jamie Spencer	692	103	274	14.9%	£1,339,222
10. Mickael Barzalona	414	66	140	15.9%	£1,234,635

**Leading Jockeys
Prize Money won in Great Britain**

Jump - 2012

Jockey	Number of Rides	Number of Winners	Number of Placed Horses	Strike Rate*	Total Prize Money (Win and Place)
1. Barry Geraghty	242	61	102	25.2%	£1,903,047
2. R. Walsh	223	62	92	27.8%	£1,678,956
3. A. P. McCoy	697	157	269	22.5%	£1,514,030
4. Richard Johnson	880	158	381	18.0%	£1,432,871
5. Daryl Jacob	370	59	150	15.9%	£1,209,318
6. Jason Maguire	756	167	299	22.1%	£1,191,282
7. Tom Scudamore	562	88	214	15.7%	£960,742
8. Noel Fehily	366	54	157	14.8%	£757,260
9. Sam Twiston-Davies	582	82	216	14.1%	£727,393
10. Robert Thornton	321	43	153	13.4%	£724,471

**Leading Trainers
Prize Money won in Great Britain**

Flat - 2012

Trainer	Number of Starters	Number of Winners	Number of Placed Horses	Strike Rate*	Total Prize Money (Win and Place)
1. John Gosden	629	119	303	18.9%	£3,739,407
2. Aidan O'Brien	73	13	41	17.8%	£3,554,170
3. Richard Hannon	1367	218	539	15.9%	£2,821,469
4. Sir Henry Cecil	289	56	119	19.4%	£2,676,863
5. Mark Johnston	1344	215	475	16.0%	£2,284,276
6. Richard Fahey	1294	142	479	11.0%	£1,982,268
7. Saeed bin Suroor	436	85	196	19.5%	£1,817,649
8. Andrew Balding	712	93	278	13.1%	£1,365,377
9. William Haggas	448	83	193	18.5%	£1,257,840
10. Kevin Ryan	789	95	247	12.0%	£1,228,983

**Leading Trainers
Prize Money won in Great Britain**

Jump - 2012

Trainer	Number of Starters	Number of Winners	Number of Placed Horses	Strike Rate*	Total Prize Money (Win and Place)
1. Paul Nicholls	559	128	255	22.9%	£3,248,440
2. Nicky Henderson	574	145	222	25.3%	£2,888,844
3. Donald McCain	732	165	282	22.5%	£1,178,395
4. Jonjo O'Neill	657	84	200	12.8%	£1,176,352
5. Alan King	482	75	221	15.6%	£1,165,264
6. Philip Hobbs	518	73	196	14.1%	£1,016,463
7. David Pipe	604	99	223	16.4%	£990,240
8. Nigel Twiston-Davies	553	74	223	13.4%	£744,750
9. Venetia Williams	495	85	184	17.2%	£624,232
10. Evan Williams	559	74	214	13.2%	£525,310

SECTION A

BREEDING

TABLE 1

Breeding Statistics

Lines 1 to 6

Registered Stallions and Mares Reported at Stud

The number of Registered Stallions in Great Britain and Ireland and the number of Mares Reported at Stud in Great Britain and Ireland, as contained in the Return of Mares.

Lines 7 to 13

Number of Live Thoroughbred Foals

The number of live Thoroughbred Foals born in Great Britain (England, Scotland and Wales) and Ireland (Irish Republic and Northern Ireland) as reported to the Stud Book Authority during the year and as contained in the Return of Mares.

Lines 14 to 16

Number of Names Registered under the Orders and Rules of Racing

The number of horses' names registered in a year with the Names Section of Racing Administration Department at Weatherbys and expressed in two parts – Thoroughbred and Non-Thoroughbred.

Line 17

Number of Horses Exported from Great Britain and Ireland

The number of horses for which Application forms for Release of Stud Book Certificates have been received and actioned by the Stud Book Authority during the year, as reported in the Supplement to the Return Of Mares.

TABLE 2

Analysis of Exported Horses

An analysis by country of importation of the number of horses exported from Great Britain and Ireland during the year, as reported in the Supplement to the Return Of Mares. The top 15 destination countries are shown, together with an aggregate of all the other destinations.

Breeding Statistics

	2008	2009	2010	2011	2012
1. No. of Registered Stallions That Stood in Great Britain	345	347	306	285	259
2. No. of Registered Stallions That Stood in Ireland	411	367	326	288	260
3. Total No. of Registered Stallions That Stood in Great Britain and Ireland	756	714	632	573	519
4. No. of Mares Reported at Stud in Great Britain	10,740	10,624	9,826	9,317	8,766
5. No. of Mares Reported at Stud in Ireland	20,038	18,851	15,345	13,763	12,952
6. Total No. of Mares Reported at Stud in Great Britain and Ireland	30,778	29,475	25,171	23,080	21,718
7. No. of Live Thoroughbred Foals in Great Britain - Colts	2,959	2,725	2,340	2,334	2,187
8. No. of Live Thoroughbred Foals in Great Britain - Fillies	2,961	2,870	2,325	2,301	2,179
9. No. of Live Thoroughbred Foals in Great Britain - TOTAL	5,920	5,595	4,665	4,635	4,366
10. No. of Live Thoroughbred Foals in Ireland - Colts	6,325	5,460	3,993	3,894	3,891
11. No. of Live Thoroughbred Foals in Ireland - Fillies	6,094	4,707	3,595	3,656	3,655
12. No. of Live Thoroughbred Foals in Ireland - TOTAL	12,419	10,167	7,588	7,550	7,546
13. Total No. of Live Thoroughbred Foals in Great Britain and Ireland	18,339	15,762	12,253	12,185	11,912
14. No. of Names Registered Under the Rules of Racing - Thoroughbred	15,220	14,356	14,010	13,672	12,697
15. No. of Names Registered Under the Rules of Racing - Non-Thoroughbred	441	427	392	365	350
16. No. of Names Registered Under the Rules of Racing - TOTAL	15,661	14,783	14,402	14,037	13,047
17. No. of Horses Exported from Great Britain and Ireland	3,413	3,471	3,500	3,633	3,483

Analysis of Exported Horses

2012

	Country	Mares	Fillies, 4 yrs and Under	Colts, 4 yrs and Under	Geldings	Horses	Total
1	France	133	598	412	66	9	1,218
2	USA	45	155	82	56	9	347
3	United Arab Emirates	1	31	135	97	12	276
4	Italy	14	109	94	23	1	241
5	Kingdom of Saudi Arabia	67	50	24	36	4	181
6	Germany	18	66	57	30	3	174
7	Qatar	5	42	34	27	2	110
8	Sweden	11	26	41	26	1	105
9	Hong Kong	0	1	34	67	0	102
10	Greece	1	48	18	33	0	100
11	Australia	15	37	20	14	4	90
12	India	44	5	1	0	1	51
13	Spain	3	18	24	1	0	46
14	Japan	20	15	9	0	0	44
15	Belgium	7	10	5	21	0	43
	Others	45	136	105	60	9	355
GRAND TOTAL							3,483

SECTION B

OWNERSHIP

TABLE 1

New Registrations

Line 1 Registered Owners

The total number of Owners becoming registered during the year.

Line 2 Colours

The number of new Colours registered during the year.

Line 3 Joint Ownerships

The number of new Joint Ownerships registered during the year.

Line 4 Joint Ownership Names

The number of new Joint Ownership Names registered during the year.

Line 5 Racing Partnerships

The number of new Racing Partnerships registered during the year.

Line 6 Leases

The number of new Leases registered during the year.

Line 7 Registered Companies

The number of new Companies registered for the purpose of owning horses during the year.

Line 8 Recognised Business Partnerships

The number of new Business Partnerships registered for the purpose of owning horses during the year.

Registrations Current at Year End

Line 1 Registered Owners

The total number of Registered Owners on file as at the year end. Owners are normally kept on file until they have not had a horse in training for 24 consecutive months.

Line 2 Colours

The total number of Colours on file as at the year end.

Line 3
Joint Ownerships

The total number of Joint Ownerships held on file as at the year end.

Line 4
Joint Ownership Names

The total number of Joint Ownership Names held on file as at the year end.

Line 5
Racing Partnerships

The total number of Racing Partnerships held on file as at the year end.

Line 6
Leases

The total number of Leases in operation as at the year end.

Line 7
Registered Companies

The total number of Company Registrations in operation as at the year end.

Line 8
Recognised Business Partnerships

The total number of Business Partnerships in operation as at the year end.

TABLE 2

Number of Owners Showing their Numbers of Horses in Training

The number of Owners categorised by the number of horses in training that they own. **With horses owned jointly, all the partners or lessees are counted and their shares are each counted as one horse.**

The figures shown in the table for each year are an average of the 12 monthly figures produced. As the figures are rounded to the nearest whole number, the total may not equal the sum of the individual parts.

TABLE 3

Numbers of Owners With Horses in Training by Type of Ownership

The numbers of owners with horses in training, categorised by type of ownership. The Inclusive Figures allow for duplication of a single owner in more than one of the categories, depending on the types of ownership involvement, and therefore show the total number of different owners involved in each category. The Exclusive Figures show a more precise breakdown of ownership types by which each owner with horses in training is categorised in only one of the categories. The sum of these categories is, therefore, equal to the number of different owners with horses in training as categorised in Table B2.

The figures shown in the table for each year are an average of the 12 monthly figures produced. As the figures are rounded to the nearest whole number, the total may not equal the sum of the individual parts.

Registrations

New Registrations

	2008	2009	2010	2011	2012
Registered Owners	1,950	1,742	1,636	1,659	1,462
Colours	3,176	3,338	3,331	3,207	3,040
Joint Ownerships	2,912	2,970	2,868	2,889	2,727
Joint Ownership Names	951	980	1,061	1,030	1,036
Racing Partnerships	505	438	420	449	430
Leases	350	358	333	344	354
Registered Companies	76	70	60	57	56
Recognised Business Partnerships	2	0	0	0	0

Registrations Current At Year End

	2008	2009	2010	2011	2012
Registered Owners	17,745	17,434	16,852	16,062	15,388
Colours	20,368	20,354	20,161	19,831	19,461
Joint Ownerships	4,672	4,617	4,512	4,472	4,449
Joint Ownership Names	4,058	4,252	4,376	4,415	4,507
Racing Partnerships	2,667	2,627	2,533	2,459	2,431
Leases	326	326	326	304	300
Registered Companies	629	610	585	545	517
Recognised Business Partnerships	39	32	27	27	24

Ownership Statistics

Number of Owners With a Horse in Training by the Number of Horses They Own

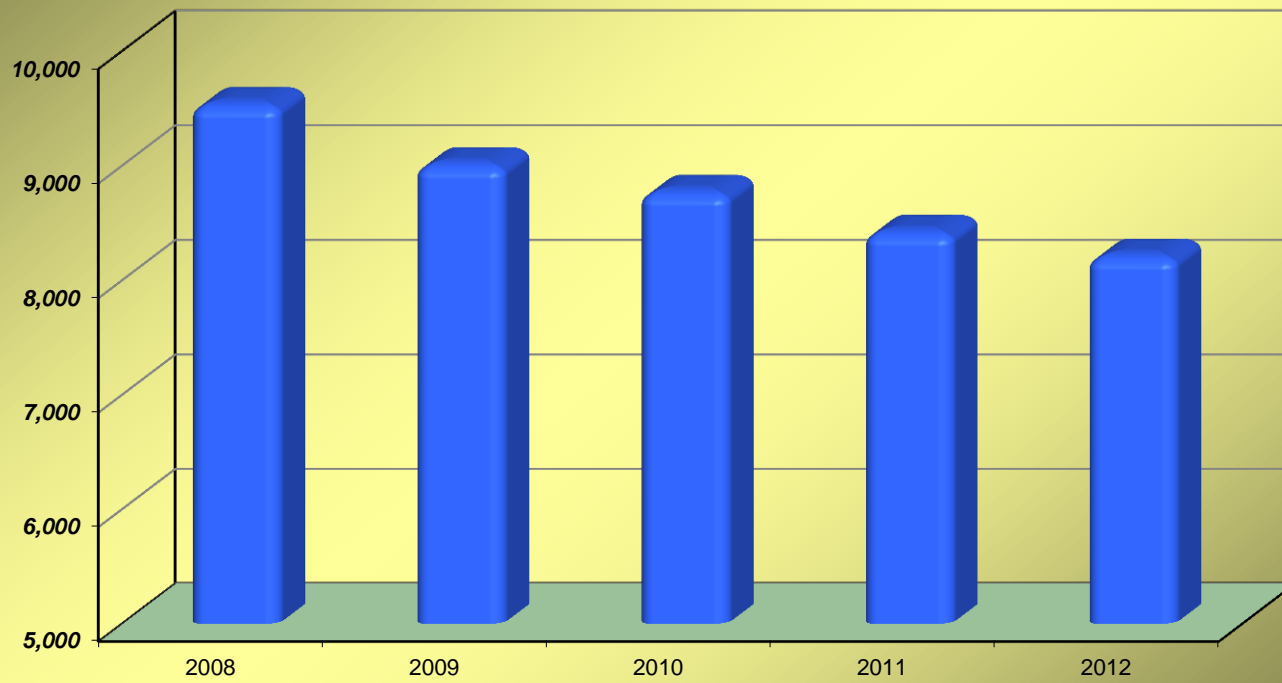
		2008	2009	2010	2011	2012
No. of Owners with	- 1 Horse in Training	5,555	5,157	5,030	4,810	4,655
	2 Horses in Training	1,850	1,792	1,712	1,620	1,571
	3 Horses in Training	782	752	757	739	717
	4 Horses in Training	416	415	389	383	377
	5 Horses in Training	251	234	239	219	235
	6-10 Horses in Training	452	430	407	420	435
	11-20 Horses in Training	160	155	170	169	159
	21+ Horses in Training	73	79	70	67	67
Total No. of Owners With a Horse in Training		9,539	9,014	8,774	8,425	8,215

Notes

With horses owned jointly, all the partners or lessees are counted and their shares are each counted as one horse.

Ownership Statistics

Total No. of Owners With a Horse in Training



Ownership Statistics

Number of Owners With a Horse in Training by Type of Ownership

	2008	2009	2010	2011	2012
INCLUSIVE FIGURES					
No. of Sole Owners (excluding Company)	3,489	3,357	3,265	3,126	3,001
No. of Company Sole Owners	329	311	296	277	276
No. of Business Partnerships	31	28	28	23	23
No. of Joint Ownership Owners	4,914	4,643	4,626	4,467	4,432
No. of Racing Partnership Owners	2,554	2,402	2,301	2,246	2,190
EXCLUSIVE FIGURES					
No. of Sole Owners (excluding Company)	2,545	2,445	2,342	2,238	2,142
No. of Company Sole Owners	264	254	239	224	221
No. of Business Partnership Sole Owners	21	19	18	14	13
No. of Sole Owners and Joint Ownership Owners	943	912	922	881	850
No. of Company Owners and Joint Ownership Owners	65	58	57	53	55
No. of Business Partners and Joint Ownership Owners	9	9	11	9	10
No. of Joint Ownership Owners only (including Companies)	5,690	5,318	5,185	5,006	4,924
TOTAL	9,539	9,014	8,774	8,425	8,215

SECTION C

TRAINING AND RIDING

TABLE 1

Licences and Permits to Train and Ride

Line 1

Trainers Combined Licences

The number of Licences issued by the Licensing Committee, to train horses for both Flat and Jump races, during the year.

Line 2

Trainers Flat Only Licences

The number of Licences to train horses, for Flat races only, issued during the year.

Line 3

Trainers Jump Only Licences

The number of Licences to train horses, for Jump races only, issued during the year.

Line 4

Permits to Train

The number of Permits issued for the training of horses (Jump races only) during the season specified.

Line 5

Flat Jockeys Licences

The number of Professional Jockey Licences issued by the Licensing Committee to Flat Jockeys during the year.

Line 6

Jump and Conditional Jockey Licences

The number of Professional Jockey Licences issued by the Licensing Committee to Jump and Conditional Jockeys during the season specified.

Line 7

Apprentice Jockey Licences

The number of Apprentice Jockey Licences issued by the Licensing Committee during the year.

Line 8

Amateur Riders Permits

The number of Permits issued to Amateur Riders by the Licensing Committee during the season specified.

Category A permits entitle the holder to ride in all Amateur Flat Races and Steeple Chases and Hurdle Races confined to Amateur Riders.

Category B permits also allow the holder to ride in Steeple Chases and Hurdle Races open to Professional Jockeys.

TABLE 2

Horses in Training by Type and Age of Horse

An analysis of the number of horses in training taken from Trainers Returns and broken down into: Flat-Only horses, Jump-Only horses, Dual-Purpose horses and Hunters' Steeple Chasers. Within each of these sub-sections, the horse population is broken down by age group.

Due to a change in the way Dual-Purpose horses have been classified from February 2009 onwards, the breakdown between Flat-Only, Jump-Only and Dual-Purpose horses may not be comparable with previous years.

The figures shown in the table for each year are an average of the 12 monthly figures produced. As the figures are rounded to the nearest whole number, the total may not equal the sum of the individual parts.

For Hunter Chasers, only a total figure is shown. This is the highest number recorded during the year, typically the figure for May or June.

TABLE 3

Horses in Training by Type of Ownership

An analysis of the number of horses in training taken from Trainers Returns giving a breakdown of the number of horses in training by ownership type and an analysis of the horses owned jointly.

The figures shown in the table for each year are an average of the 12 monthly figures produced. As the figures are rounded to the nearest whole number, the total may not equal the sum of the individual parts.

TABLE 4

Horses in Training – Size of Trainers' Yards

An analysis of the number of horses in training taken from Trainers Returns and broken down by type of trainer and number of horses in each yard by horse type, except for Permit Holders and Hunter Trainers, where the breakdown by horse type is not shown.

The figures shown in the table for each year are an average of the 12 monthly figures produced, except for Hunter Trainers, where an average of the monthly figures for February to June is shown. As the figures are rounded to the nearest whole number, the total may not equal the sum of the individual parts.

Training and Riding

Licences and Permits to Train and Ride

		2007/2008 Jump Season	2008/2009 Jump Season	2009/2010 Jump Season	2010/2011 Jump Season	2011/2012 Jump Season
		2008 Flat Season	2009 Flat Season	2010 Flat Season	2011 Flat Season	2012 Flat Season
TRAINERS						
Combined Licences		503	497	487	474	468
Flat Only Licences		41	42	40	38	40
Jump Only Licences		52	49	46	49	49
Permits to Train		140	127	125	121	119
RIDERS						
Flat Professional Licences		125	121	125	125	123
Flat Apprentice Licences		118	121	123	133	136
Jump Professional Licences		95	88	93	99	94
Jump Conditional Licences		76	74	75	78	95
Restricted Conditional Licences		13	15	17	19	15
Amateur Riders' Permits	Category A	249	148	228	217	190
(July 1st - June 30th)	Category B	151	240	148	153	150

N.B.

The above figures are an average of the 12 monthly figures for each type of Licence held during the relevant year.

Horses in Training

Flat-Only Horses¹

	2008	2009	2010	2011	2012
2-y-o	3,396	3,160	3,100	3,043	2,849
3-y-o	2,874	2,790	2,690	2,587	2,652
4-y-o	1,103	1,288	1,304	1,264	1,229
5-y-o+	1,411	1,679	1,754	1,741	1,741
TOTAL	8,784	8,917	8,848	8,636	8,471

Dual-Purpose Horses¹

	2008	2009	2010	2011	2012
3-y-o	140	83	67	62	64
4-y-o	500	228	191	169	164
5-y-o+	1,654	765	505	439	419
TOTAL	2,293	1,075	762	670	647

NOTES

- Due to changes in the way that Dual Purposes horses are classified from February 2009 onwards, the figures for Flat-Only, Jump-Only and Dual-Purpose horses may not be comparable with previous years.
- The figure for Hunter Chasers is the highest point reached during the year, typically in May or June, whereas all other figures are an average of the 12 monthly figures for each year.

Jump-Only Horses¹

	2008	2009	2010	2011	2012
3-y-o	91	106	104	109	94
4-y-o	484	619	643	587	566
5-y-o+	3,502	3,952	3,982	3,845	3,760
TOTAL	4,077	4,677	4,730	4,541	4,420

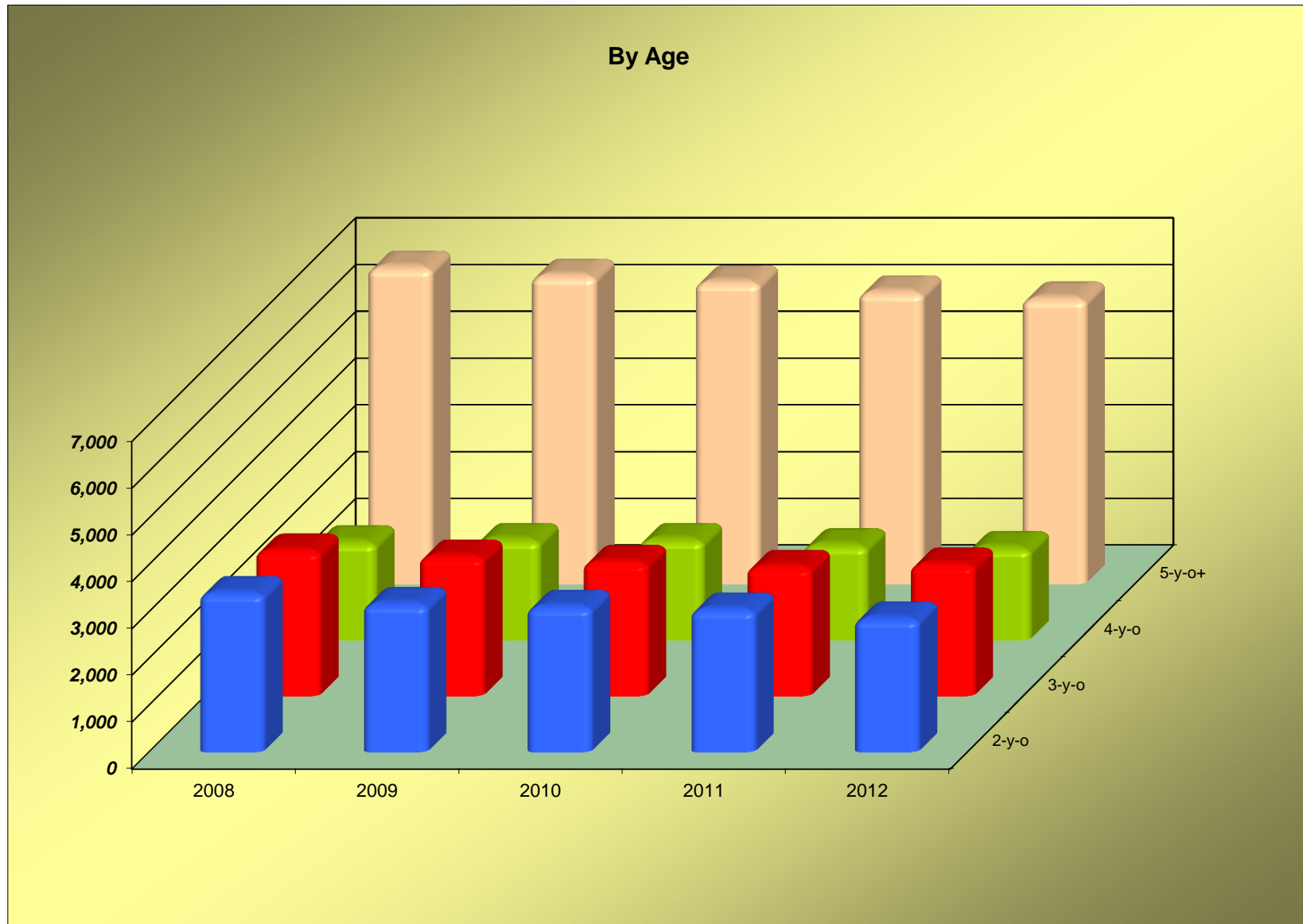
Hunter Chasers²

	2008	2009	2010	2011	2012
TOTAL	606	574	629	588	539

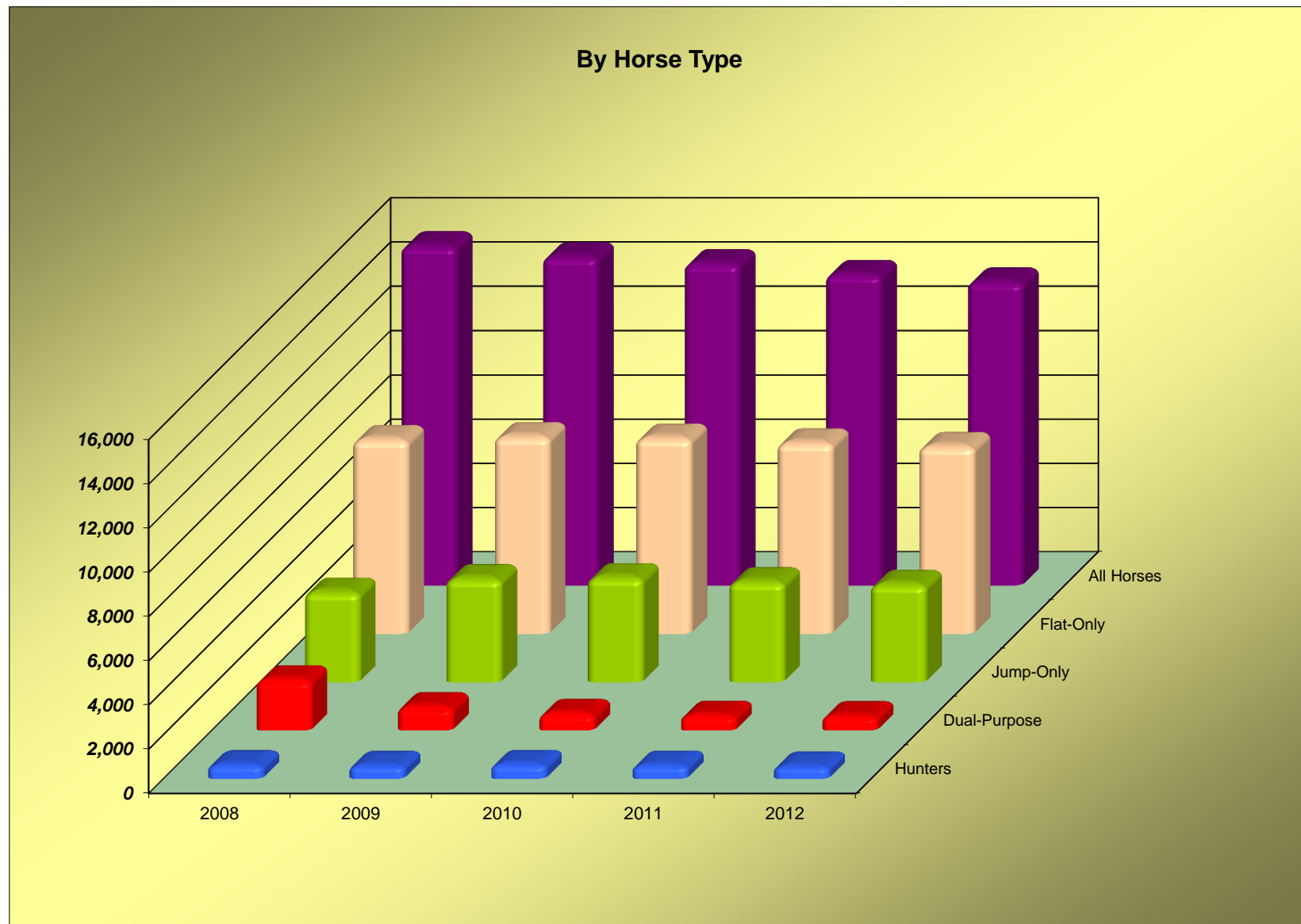
All Horses

	2008	2009	2010	2011	2012
2-y-o	3,396	3,160	3,100	3,043	2,849
3-y-o	3,105	2,979	2,862	2,759	2,810
4-y-o	2,086	2,135	2,138	2,021	1,959
5-y-o+	6,761	6,586	6,450	6,234	6,098
TOTAL	15,349	14,859	14,549	14,056	13,716

Horses in Training



Horses in Training



Horses in Training by Type of Ownership

	2008	2009	2010	2011	2012
No. of Horses Owned by a Sole Individual	8,683	8,519	8,333	7,939	7,511
No. of Horses Owned by a Sole Company	1,096	1,027	1,084	1,163	1,252
No. of Horses Owned by a Sole Business Partnership	83	77	90	64	50
No. of Horses Owned by a Joint Ownership	3,132	2,947	2,911	2,843	2,832
No. of Horses Owned by a Racing Partnership	2,557	2,529	2,364	2,283	2,282
TOTAL	15,550	15,098	14,781	14,292	13,927
No. of Horses Owned Jointly by a Party of 2	4,219	4,062	3,911	3,770	3,719
No. of Horses Owned Jointly by a Party of 3	970	942	914	911	946
No. of Horses Owned Jointly by a Party of 4	329	297	285	291	297
No. of Horses Owned Jointly by a Party of 5+	171	175	165	154	152
TOTAL NO. OF HORSES OWNED JOINTLY	5,689	5,476	5,274	5,126	5,114

Notes

The figure for the Total Number of Horses in Training shown in this table will overstate the figure shown in Table C2 due to the fact that the above figures also include Yearlings.

Horses owned jointly includes horses owned by Joint Ownerships and Racing Partnerships.

Horses in Training - Size of Trainers' Yards

Licensed Trainers

	2008	2009	2010	2011	2012
No. of Yards With 1-10 Flat-Only Horses	253	255	255	241	239
11-15 Flat-Only Horses	45	48	49	46	50
16-20 Flat-Only Horses	24	33	29	37	34
21-30 Flat-Only Horses	34	30	36	34	34
31-40 Flat-Only Horses	22	24	24	18	21
41+ Flat-Only Horses	65	65	62	60	58
No. of Yards With 1-10 Jump-Only Horses	303	299	292	278	274
11-15 Jump-Only Horses	31	39	39	39	37
16-20 Jump-Only Horses	16	20	18	18	17
21-30 Jump-Only Horses	14	19	18	15	21
31-40 Jump-Only Horses	8	8	11	12	7
41+ Jump-Only Horses	15	18	18	17	18
No. of Yards With 1-10 Dual-Purpose Horses	368	310	272	250	242
11-15 Dual-Purpose Horses	24	9	6	3	5
16-20 Dual-Purpose Horses	9	3	0	1	2
21-30 Dual-Purpose Horses	6	1	0	0	0
31-40 Dual-Purpose Horses	4	0	0	0	0
41+ Dual-Purpose Horses	4	1	0	0	0
No. of Yards With 1-10 Horses In Total	232	226	220	218	213
11-15 Horses In Total	88	88	89	86	92
16-20 Horses In Total	63	64	60	62	60
21-30 Horses In Total	65	66	72	72	73
31-40 Horses In Total	42	38	37	31	30
41+ Horses In Total	102	99	92	87	86
TOTAL YARDS WITH A HORSE IN TRAINING	591	581	569	556	553

Horses in Training - Size of Trainers' Yards

Permit Holders and Hunter Trainers

Permit Holders

	2008	2009	2010	2011	2012
No. of Yards With 1-10 Horses In Total	122	113	111	109	107
11+ Horses In Total	4	3	2	2	2
TOTAL YARDS WITH A HORSE IN TRAINING	126	116	113	112	110

Hunter Trainers

	2008	2009	2010	2011	2012
No. of Yards With 1-10 Horses In Total	276	275	297	308	251
11+ Horses In Total	0	1	3	2	0
TOTAL YARDS WITH A HORSE IN TRAINING	276	276	299	310	252

Notes

The figure for Hunter Trainers is an average of the figures for February to June, whereas for Permit Holders it is an average of figures for January to December.

Horses in Training - Size of Trainers' Yards

All Trainers

	2008	2009	2010	2011	2012
No. of Yards With 1-10 Flat-Only Horses	258	269	272	250	241
11-15 Flat-Only Horses	45	48	49	47	50
16-20 Flat-Only Horses	24	33	29	37	34
21-30 Flat-Only Horses	34	30	36	34	34
31-40 Flat-Only Horses	22	24	24	18	21
41+ Flat-Only Horses	65	65	62	60	58
No. of Yards With 1-10 Jump-Only Horses	560	551	555	537	508
11-15 Jump-Only Horses	34	43	41	41	39
16-20 Jump-Only Horses	16	20	19	18	18
21-30 Jump-Only Horses	14	19	18	15	21
31-40 Jump-Only Horses	8	8	11	12	7
41+ Jump-Only Horses	15	18	18	17	18
No. of Yards With 1-10 Dual-Purpose Horses	371	314	277	252	243
11-15 Dual-Purpose Horses	24	9	6	3	5
16-20 Dual-Purpose Horses	9	3	0	1	2
21-30 Dual-Purpose Horses	6	1	0	0	0
31-40 Dual-Purpose Horses	4	0	0	0	0
41+ Dual-Purpose Horses	4	1	0	0	0
No. of Yards With 1-10 Horses In Total	492	487	493	483	448
11-15 Horses In Total	91	91	91	89	94
16-20 Horses In Total	63	65	61	62	60
21-30 Horses In Total	65	66	72	72	73
31-40 Horses In Total	42	38	37	31	30
41+ Horses In Total	102	99	92	87	86
TOTAL YARDS WITH A HORSE IN TRAINING	855	846	846	825	791

SECTION D

FIXTURES, RACES AND PRIZE MONEY

TABLE 1

Fixtures

A fixture is defined as **one** day's racing at **one** course.

TABLE 2

Field Sizes - Flat

The number of Runners (1-5, 6-10, 11-15, 16-20 and 21+) in the number of races shown monthly for Flat races. The number of Walkovers (if any) is shown separately.

TABLE 3

Field Sizes - Jump

The number of Runners (1-5, 6-10, 11-15, 16-20 and 21+) in the number of races shown monthly for Hurdle Races and National Hunt Flat Races, and for Steeple Chases. The number of Walkovers (if any) is shown separately.

TABLE 4

Field Sizes – Flat and Jump

The number of Runners (1-5, 6-10, 11-15, 16-20 and 21+) in the number of races shown as a total for each of the last 5 years for Flat races and Jump races. A separate table for Hurdle Races and National Hunt Flat Races and for Steeple Chases is also shown. The number of Walkovers (if any) is shown separately.

TABLE 5

Flat Racing

Number of Different Horses Which Ran – by Age

An analysis of the number of different horses which ran on the Flat under Rules in each calendar year as 2 years old, 3 years old, 4 years old and over and in total.

Average Number of Runs per Horse that Ran

The number of individual different horses that ran on the Flat divided into the total number of Flat runners for each year.

Number of Different Winners

The number of different horses which won a Flat race under Rules in the calendar year.

Number of Races Divided Overnight

The number of different Flat races that were divided under the Rules of Racing because the number of horses declared to run exceeded the safety factor/maximum figure or field size limit of the race concerned or, in exceptional circumstances, to provide a sufficient number of races on the day due to other races on the card being abandoned.

Number of Horses Balloted Out or Eliminated

The number of horses taken out of a Flat race under the Rules of Racing because the number left in at the declaration to run stage exceeded the safety factor/maximum figure or field size limit. These figures are for ALL Flat races, including abandoned races, so will not necessarily equate to the total number of eliminations in table D6, which is only for races that actually took place.

Jump Racing

Number of Different Horses Which Ran

The total number of different horses which ran under Jump Rules in each calendar year.

Average Number of Runs per Horse that Ran

The number of individual different horses that ran under Jump Rules divided into the total number of Jump runners for each calendar year.

Number of Different Winners

The number of different horses that won a Jump race under Rules in the calendar year.

Number of Races Divided Overnight

The number of different Jump races that were divided under the Rules of Racing because the number of horses declared to run exceeded the safety factor/maximum figure or field size limit of the race concerned or, in exceptional circumstances, to provide a sufficient number of races on the day due to other races on the card being abandoned.

Number of Horses Balloted Out or Eliminated

The number of horses taken out of a Jump race under the Rules of Racing because the number left in at the declaration to run stage exceeded the safety factor/maximum figure or field size limit. These figures are for ALL Jump races, including abandoned races, so will not necessarily equate to the total number of eliminations in tables D7, D8 and D9, which are only for races that actually took place.

TABLE 6

Races, Entries, Runners, Eliminations and Prize Money by Type of Race – Flat

An analysis of the number of Entries, Runners and Eliminations by types of Handicaps and types of Weight-for-Age races, together with Prize Money value and percentage of total Flat Prize Money for each type.

TABLE 7

Races, Entries, Runners, Eliminations and Prize Money by Type of Race – Jump

An analysis of the number of Entries, Runners and Eliminations by types of Handicaps and types of Weight-for-Age races, together with Prize Money value and percentage of total Jump Prize Money for each type.

TABLE 8

Races, Entries, Runners, Eliminations and Prize Money by Distance of Race – Hurdle Races and National Hunt Flat Races

An analysis of the number of Entries, Runners and Eliminations by Distance of Race in Handicaps and Weight-for-Age races for Hurdle Races and National Hunt Flat Races. Averages per race, together with Prize Money value and percentage of total Prize Money for Hurdle Races and National Hunt Flat Races for each Distance category are shown.

TABLE 9

Races, Entries, Runners, Eliminations and Prize Money by Distance of Race – Steeple Chases

An analysis of the number of Entries, Runners and Eliminations by Distance of Race in Handicaps and Weight-for-Age races for Steeple Chases. Averages per race, together with Prize Money value and percentage of total Prize Money for Steeple Chases for each Distance category are shown.

TABLE 10

Prize Money by Source for Pattern Races – Flat Racing

An analysis by Course of the source of Prize Money for Flat Pattern Races.

TABLE 11

Prize Money by Source

An analysis of the total Prize Money for the last 5 years, broken down by source.

TABLE 12

Comparison of Flat and Jump Prize Money Pools

An analysis of Flat Prize Money, Jump Prize Money and Total Prize Money by source.

TABLE 13

Total Prize Money by Racecourse

A comparison of the number of Fixtures and Prize Money by source for each Racecourse. A separate table is shown for Flat Racing, Jump Racing and All Racing.

TABLE 14

Sponsored Number Cloth Income

A breakdown by Racecourse (Flat, Jump and Total) of the income derived from the sponsoring of number cloths.

TABLE 15

Prize Money Won Abroad by Horses Trained in Great Britain

Win and Place Prize Money won abroad (i.e. not England, Scotland or Wales) by horses trained in Great Britain at the time of running.

Prize Money Won in Great Britain by Horses Trained outside of Great Britain

Win and Place Prize Money won in Great Britain by horses showing a foreign Trainer in the Official Return sent in by the Clerk of the Scales from the Racecourse. The amount taken will be the Penalty Value shown.

TABLE 16

Appearance Money

The amount paid in Appearance Money payments for the last 5 years, under Schedule (F)11 of the Rules of Racing. A breakdown is shown of money paid in respect of Sunday Racing and that paid for races run on other days of the week.

Owners' Premiums

The amount paid in Owners' Premiums for British Bred Horses in accordance with Rules of Racing. The Owners' Premium Scheme ran from January 1st, 2004 until December 31st, 2006.

Prize Money and Race Statistics

Fixtures

		2008	2009	2010	2011	2012
Flat						
Fixtures Originally Programmed	(a)	945	(g) 911	(j) 909	(o) 895	(q) 873
Additional Fixtures Programmed		1	13	17	1	
Fixtures That Took Place	(b,c,d,e)	916	919	905	896	854
Fixtures Abandoned	(f)	29	5	(k) 20	0	
Jump						
Fixtures Originally Programmed		556	567	591	582	580
Additional Fixtures Programmed		5	13	11	7	
Fixtures That Took Place		505	505	(l) 481	(p) 570	512
Fixtures Abandoned		56	(h) 75	120	21	
Mixed						
Fixtures Originally Programmed		3	2	3	3	3
Additional Fixtures Programmed		0	0	(m) 3	0	0
Fixtures That Took Place	(e)	2	2	(l) 6	3	3
Fixtures Abandoned		0	0	1	0	0
All Racing						
Fixtures Originally Programmed		1,504	1,480	1,503	1,480	1,456
Additional Fixtures Programmed		6	26	31	8	0
Fixtures That Took Place		1,423	1,426	1,392	(p) 1,469	1,369
Fixtures Abandoned	(f)	85	80	(k) 141	21	0
(Of Which Evening)						
Fixtures Originally Programmed		372	357	326	273	262
Additional Fixtures Programmed		1	0	0	0	
Fixtures That Took Place		364	(i) 325	(n) 268	273	
Fixtures Abandoned	(f)	7	4	(k) 2	0	

Notes

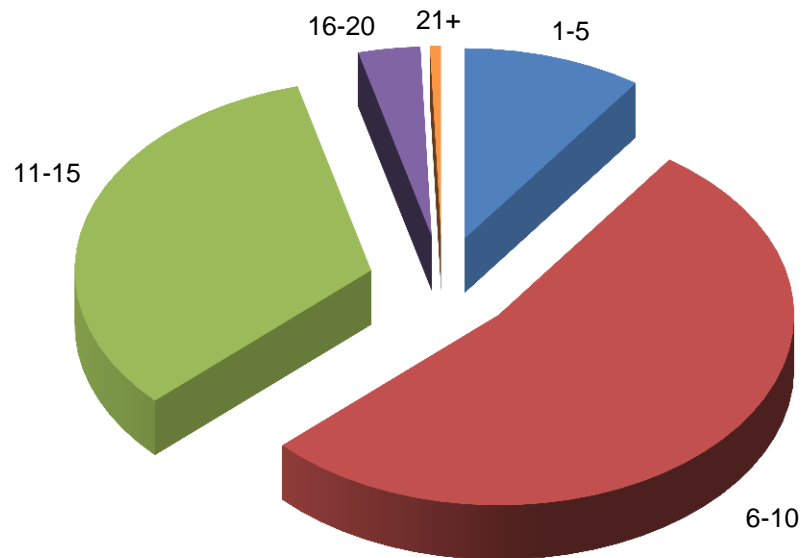
- (a) 361 All Weather Track Flat fixtures programmed
- (b) 1 All Weather Track Flat fixture transferred to a Turf course
- (c) 1 Turf/AWT Flat fixture converted to AWT only
- (d) 1 AWT Flat fixture converted to Turf only
- (e) 1 Mixed fixture converted to a Flat fixture
- (f) 2 AWT Flat Evening fixtures cancelled
- (g) 331 All Weather Track Flat fixtures programmed
- (h) 1 Jump fixture abandoned and replaced by a Flat AWT fixture
- (i) 2 Evening fixtures cancelled, 6 Evening fixtures altered to Afternoon, 20 Evening fixtures altered to Twilight
- (j) 302 All Weather Track Flat fixtures programmed
- (k) 1 Flat Evening fixture cancelled
- (l) 1 Jump fixture converted to a Mixed (AWT) fixture
- (m) 3 additional "Bumpers For Jumpers" fixtures
- (n) 55 Evening fixtures altered to Twilight fixtures
- (o) 300 All Weather Track Flat fixtures programmed
- (p) 2 Jump fixtures re-scheduled
- (q) 293 All Weather Track Flat fixtures programmed

**Numbers of Runners in Races
Flat Racing
2012**

Runners	Number of Races												Total	% of All Races
	Jan	Feb	Mar	Apr	May	Jun	Jul	Aug	Sep	Oct	Nov	Dec		
1-5	27	48	42	51 ⁽¹⁾	66	80	68	86	60	34	14	22	598 ⁽¹⁾	9.8%
6-10	168	168	165	201	344	406	409	537	345	214	124	168	3,249	53.2%
11-15	80	55	67	141	235	257	210	227	231	283	139	91	2,016	33.0%
16-20	0	0	4	13	41	27	20	38	38	18	8	0	207	3.4%
21+	0	0	2	4	2	9	5	2	7	5	1	0	37	0.6%
TOTAL	275	271	280	410	688	779	712	890	681	554	286	281	6,107	100.0%

Notes

The number of walkovers is shown in brackets.



Numbers of Runners in Races

Jump Racing

2012

Hurdle Races and National Hunt Flat Races

Runners	Number of Races												Total	% of All Races
	Jan	Feb	Mar	Apr	May	Jun	Jul	Aug	Sep	Oct	Nov	Dec		
1-5	17	7	24	25	8	24	4 ⁽¹⁾	18	4	18	15	22	186 ⁽¹⁾	8.7%
6-10	131	56	152	89	116	74	47	60	40	93	139	123	1,120	52.6%
11-15	80	82	79	53	57	41	45	32	29	68	69	77	712	33.4%
16-20	10	15	19	11	7	1	3	2	1	7	13	11	100	4.7%
21+	0	0	6	3	0	0	0	0	0	2	1	1	13	0.6%
TOTAL	238	160	280	181	188	140	99	112	74	188	237	234	2,131	100.0%

Steeple Chases

Runners	Number of Races												Total	% of All Races
	Jan	Feb	Mar	Apr	May	Jun	Jul	Aug	Sep	Oct	Nov	Dec		
1-5	53	24	67	38	36	25	12	24	7	16	38	57	397	28.2%
6-10	85	62	105	79	74	46	32	28	29	65	97	90	792	56.2%
11-15	20	22	18	11	21	13	11	10	4	22	19	15	186	13.2%
16-20	3	1	6	1	1	2	1	0	1	4	3	3	26	1.8%
21+	0	0	4	4	0	0	0	0	0	0	0	0	8	0.6%
TOTAL	161	109	200	133	132	86	56	62	41	107	157	165	1,409	100.0%

Notes

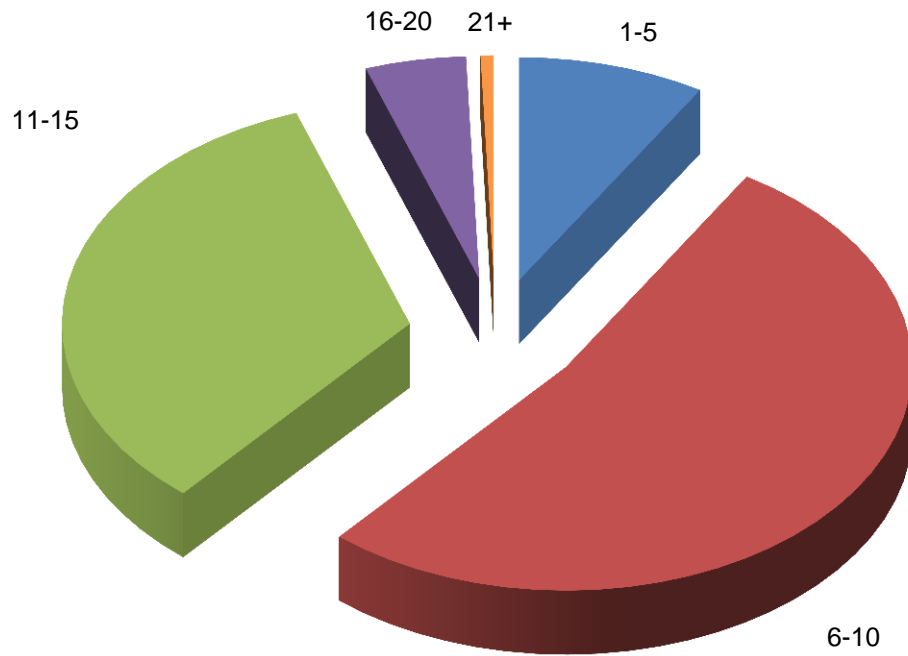
The number of walkovers is shown in brackets.

Numbers of Runners in Races

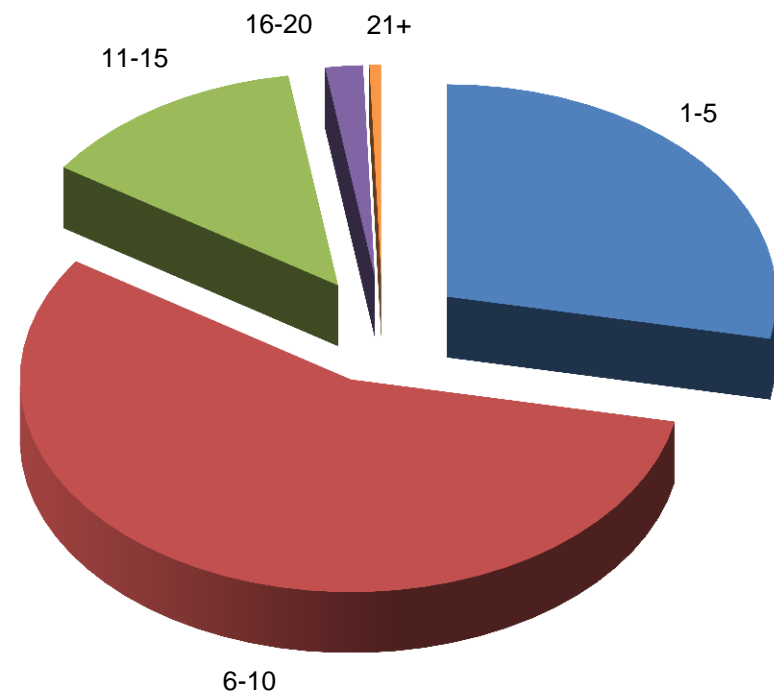
Jump Racing

2012

Hurdle Races and National Hunt Flat Races



Steeple Chases



Analysis of Racing by Size of Field

Flat Races

	2008		2009		2010		2011		2012	
Runners	Number of Races	% of All Races	Number of Races	% of All Races	Number of Races	% of All Races	Number of Races	% of All Races	Number of Races	% of All Races
1-5	426 ⁽¹⁾	7.0%	454	7.3%	539	8.5%	632 ⁽¹⁾	10.1%	598 ⁽¹⁾	9.8%
6-10	2,964	48.4%	3,205	51.2%	3,392	53.8%	3,346	53.4%	3,249	53.2%
11-15	2,398	39.1%	2,324	37.2%	2,139	33.9%	2,030	32.4%	2,016	33.0%
16-20	311	5.1%	245	3.9%	210	3.3%	230	3.7%	207	3.4%
21+	29	0.5%	26	0.4%	29	0.5%	32	0.5%	37	0.6%
TOTAL	6,128	100.0%	6,254	100.0%	6,309	100.0%	6,270	100.0%	6,107	100.0%

Jump Races

	2008		2009		2010		2011		2012	
Runners	Number of Races	% of All Races	Number of Races	% of All Races	Number of Races	% of All Races	Number of Races	% of All Races	Number of Races	% of All Races
1-5	256	7.6%	341	10.1%	417	12.8%	673 ⁽³⁾	17.4%	583 ⁽¹⁾	16.5%
6-10	1,431	42.5%	1,564	46.4%	1,611	49.5%	1,995	51.5%	1,912	54.0%
11-15	1,317	39.1%	1,199	35.5%	1,028	31.6%	1,022	26.4%	898	25.4%
16-20	333	9.9%	248	7.4%	178	5.5%	166	4.3%	126	3.6%
21+	29	0.9%	22	0.7%	23	0.7%	21	0.5%	21	0.6%
TOTAL	3,366	100.0%	3,374	100.0%	3,257	100.0%	3,877	100.0%	3,540	100.0%

Notes

The number of walkovers is shown in brackets.

Analysis of Racing by Size of Field

Hurdle Races and National Hunt Flat Races

	2008		2009		2010		2011		2012	
Runners	Number of Races	% of All Races	Number of Races	% of All Races	Number of Races	% of All Races	Number of Races	% of All Races	Number of Races	% of All Races
1-5	61	3.1%	82	4.1%	95	4.9%	179	7.7%	186 ⁽¹⁾	8.7%
6-10	657	32.9%	833	41.2%	866	44.6%	1,149	49.6%	1,120	52.6%
11-15	981	49.2%	898	44.4%	821	42.3%	832	35.9%	712	33.4%
16-20	272	13.6%	195	9.6%	143	7.4%	142	6.1%	100	4.7%
21+	23	1.2%	15	0.7%	15	0.8%	14	0.6%	13	0.6%
TOTAL	1,994	100.0%	2,023	100.0%	1,940	100.0%	2,316	100.0%	2,131	100.0%

Steeple Chases

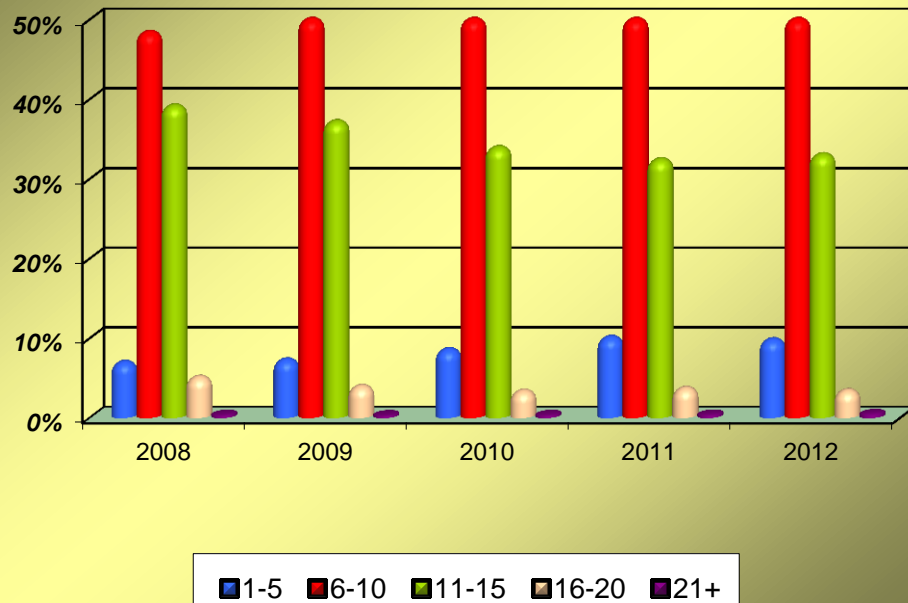
	2008		2009		2010		2011		2012	
Runners	Number of Races	% of All Races	Number of Races	% of All Races	Number of Races	% of All Races	Number of Races	% of All Races	Number of Races	% of All Races
1-5	195	14.2%	259	19.2%	322	24.4%	494 ⁽³⁾	31.6%	397	28.2%
6-10	774	56.4%	731	54.1%	745	56.6%	846	54.2%	792	56.2%
11-15	336	24.5%	301	22.3%	207	15.7%	190	12.2%	186	13.2%
16-20	61	4.4%	53	3.9%	35	2.7%	24	1.5%	26	1.8%
21+	6	0.4%	7	0.5%	8	0.6%	7	0.4%	8	0.6%
TOTAL	1,372	100.0%	1,351	100.0%	1,317	100.0%	1,561	100.0%	1,409	100.0%

Notes

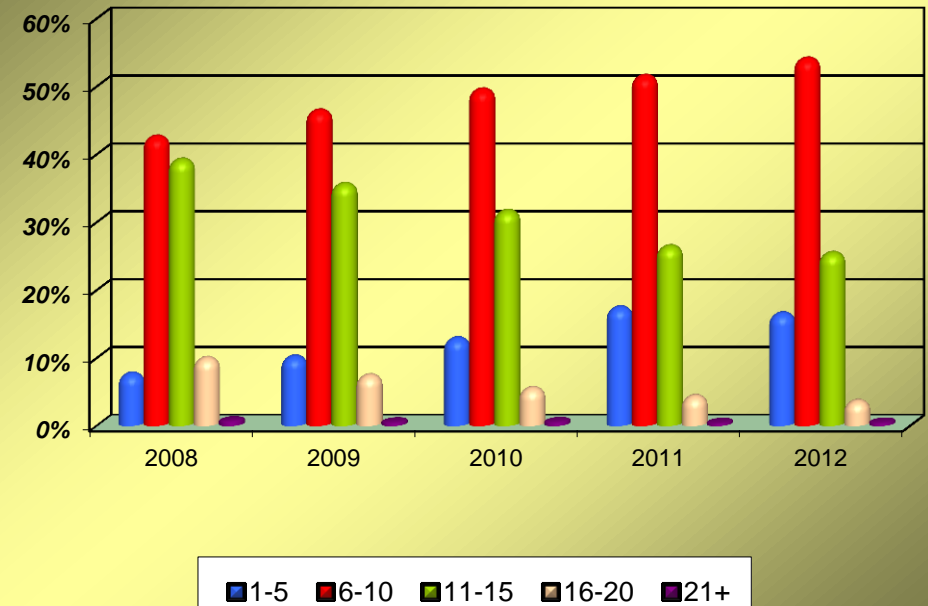
The number of walkovers is shown in brackets.

Analysis of Racing by Size of Field

Flat Races



Jump Races



Analysis of Racing

Number of Different Horses Which Ran, Number of Different Horses Which Won, Number of Races Divided Overnight, and Number of Horses Balloted Out Or Eliminated

Flat Racing

	2008	2009	2010	2011	2012
No. of Different Horses Which Ran as 2-y-o	3,313	3,176	3,075	3,046	2,764
No. of Different Horses Which Ran as 3-y-o	3,696	3,604	3,428	3,365	3,381
No. of Different Horses Which Ran as 4-y-o +	4,791	4,998	4,899	4,780	4,732
No. of Different Horses Which Ran - TOTAL	11,800	11,778	11,402	11,191	10,877
Average Number of Runs per Horse that Ran	5.3	5.3	5.3	5.4	5.4
No. of Different Horses Which Won a Race	4,016	4,057	4,075	4,079	4,038
No. of Races Divided Overnight	165	215	339	261	332
No. of Horses Balloted Out or Eliminated	10,876	10,924	7,780	6,679	8,291

Jump Racing

	2008	2009	2010	2011	2012
No. of Different Horses Which Ran	10,050	9,920	9,212	9,523	8,936
Average Number of Runs per Horse that Ran	3.6	3.4	3.4	3.3	3.5
No. of Different Horses Which Won a Race	2,327	2,350	2,303	2,631	2,454
No. of Races Divided Overnight	59	72	69	56	47
No. of Horses Balloted Out or Eliminated	5,292	3,839	2,416	1,789	1,611

Racing and Prize Money Statistics

Entries, Runners, Eliminations and Prize Money by Type of Race Flat Races 2012

Type of Race	No. of Races	Entries		Runners		Eliminations		Value	% of Total
		Total	Average	Total	Average	Total	Average	£	Value
HANDICAPS									
Sellers	18	333	18.5	183	10.2	28	1.6	49,950	0.1%
Apprentices	187	4,016	21.5	1,958	10.5	290	1.6	744,300	1.1%
Amateurs	88	1,858	21.1	1,018	11.6	175	2.0	355,100	0.5%
Others	3,623	81,281	22.4	36,695	10.1	6,861	1.9	26,638,057	40.3%
Sub-Total	3,916	87,488	22.3	39,854	10.2	7,354	1.9	27,787,407	42.1%
WEIGHT FOR AGE									
Sellers	180	2,660	14.8	1,298	7.2	21	0.1	507,848	0.8%
Claimers	208	3,398	16.3	1,454	7.0	85	0.4	614,995	0.9%
Maidens	1,300	29,571	22.7	11,958	9.2	329	0.3	5,883,886	8.9%
Novices	38	592	15.6	170	4.5	0	0.0	207,473	0.3%
Apprentices	14	220	15.7	107	7.6	13	0.9	35,500	0.1%
Amateurs	3	65	21.7	38	12.7	11	3.7	7,500	0.0%
Pattern	146	4,988	34.2	1,389	9.5	13	0.1	22,256,904	33.7%
Others	302	7,806	25.8	2,325	7.7	322	1.1	8,720,128	13.2%
Sub-Total	2,191	49,300	22.5	18,739	8.6	794	0.4	38,234,234	57.9%
TOTAL	6,107	136,788	22.4	58,593	9.6	8,148	1.3	66,021,642	100.0%

Notes

The above prize money figures have been rounded up or down as necessary. Consequently, the total prize money may not equate to the sum of the individual parts.

Racing and Prize Money Statistics
Entries, Runners, Eliminations and Prize Money by Type of Race
Jump Races
2012

Type of Race	No. of Races	Entries		Runners		Eliminations		Value £	% of Total Value
		Total	Average	Total	Average	Total	Average		
HURDLE RACES									
HANDICAPS									
Novices'	136	3,149	23.2	1,318	9.7	76	0.6	676,409	2.1%
Sellers	14	315	22.5	150	10.7	11	0.8	40,660	0.1%
Conditional Jockeys	91	2,346	25.8	972	10.7	123	1.4	402,900	1.3%
Amateurs	23	570	24.8	239	10.4	38	1.7	89,100	0.3%
Others	708	17,584	24.8	7,323	10.3	561	0.8	5,696,968	17.9%
WEIGHT FOR AGE									
Novices'	461	11,637	25.2	4,260	9.2	229	0.5	3,083,569	9.7%
Maidens	194	5,341	27.5	2,034	10.5	110	0.6	730,600	2.3%
Sellers	50	868	17.4	365	7.3	1	0.0	157,750	0.5%
Conditional Jockeys	24	502	20.9	181	7.5	0	0.0	80,764	0.3%
Amateurs	2	42	21.0	20	10.0	5	2.5	7,900	0.0%
Others	123	2,175	17.7	952	7.7	1	0.0	2,785,318	8.8%
National Hunt Flat Races	305	7,196	23.6	3,077	10.1	165	0.5	1,004,220	3.2%
Sub-Total	2,131	51,725	24.3	20,891	9.8	1,320	0.6	14,756,158	46.5%
STEEPLE CHASES									
HANDICAPS									
Novices'	148	2,463	16.6	1,042	7.0	20	0.1	959,202	3.0%
Sellers	0	0	-	0	-	0	-	0	0.0%
Conditional Jockeys	30	494	16.5	238	7.9	0	0.0	140,984	0.4%
Amateurs	11	267	24.3	130	11.8	21	1.9	143,700	0.5%
Hunters	1	22	22.0	5	5.0	0	0.0	5,500	0.0%
Others	777	14,617	18.8	6,359	8.2	105	0.1	9,388,266	29.6%
WEIGHT FOR AGE									
Novices'	302	4,667	15.5	1,763	5.8	0	0.0	2,952,305	9.3%
Maidens	8	109	13.6	51	6.4	0	0.0	29,800	0.1%
Amateurs	3	99	33.0	39	13.0	11	3.7	92,700	0.3%
Hunters	98	1,843	18.8	851	8.7	23	0.2	362,800	1.1%
Others	31	434	14.0	212	6.8	0	0.0	2,925,280	9.2%
Sub-Total	1,409	25,015	17.8	10,690	7.6	180	0.1	17,000,537	53.5%
GRAND TOTAL	3,540	76,740	21.7	31,581	8.9	1,500	0.4	31,756,695	100.0%

Racing and Prize Money Statistics

Entries, Runners, Eliminations and Prize Money by Distance of Race Hurdle Races and National Hunt Flat Races 2012

Distance of Race	No. of Races	Entries		Runners		Eliminations		Value £	% of Total Value
		Total	Average	Total	Average	Total	Average		
HANDICAPS									
2 Miles	328	7,485	22.8	3,300	10.1	182	0.6	2,681,981	18.2%
2 ¼ Miles	89	2,188	24.6	853	9.6	28	0.3	440,400	3.0%
2 ½ Miles	254	6,765	26.6	2,712	10.7	299	1.2	1,865,710	12.6%
2 ¾ Miles	106	2,718	25.6	1,095	10.3	142	1.3	550,166	3.7%
3 Miles and over	195	4,808	24.7	2,042	10.5	158	0.8	1,367,780	9.3%
Sub-Total	972	23,964	24.7	10,002	10.3	809	0.8	6,906,037	46.8%
WEIGHT FOR AGE									
2 Miles	715	16,960	23.7	6,912	9.7	356	0.5	4,377,173	29.7%
2 ¼ Miles	85	1,995	23.5	766	9.0	35	0.4	359,714	2.4%
2 ½ Miles	232	5,952	25.7	2,108	9.1	98	0.4	1,685,337	11.4%
2 ¾ Miles	67	1,543	23.0	611	9.1	8	0.1	298,790	2.0%
3 Miles and over	60	1,311	21.9	492	8.2	14	0.2	1,129,107	7.7%
Sub-Total	1,159	27,761	24.0	10,889	9.4	511	0.4	7,850,121	53.2%
TOTAL	2,131	51,725	24.3	20,891	9.8	1,320	0.6	14,756,158	100.0%

Notes

The above prize money figures have been rounded up or down as necessary. Consequently, the total prize money may not equate to the sum of the individual parts.

Racing and Prize Money Statistics

Entries, Runners, Eliminations and Prize Money by Distance of Race Steeple Chases 2012

Distance of Race	No. of Races	Entries		Runners		Eliminations		Value £	% of Total Value
		Total	Average	Total	Average	Total	Average		
HANDICAPS									
2 Miles	187	2,723	14.6	1,347	7.2	9	0.0	1,582,519	9.3%
2 ¼ Miles	71	1,159	16.3	514	7.2	0	0.0	485,919	2.9%
2 ½ Miles	247	4,724	19.1	1,974	8.0	40	0.2	2,232,033	13.1%
2 ¾ Miles	108	2,144	19.9	914	8.5	39	0.4	1,015,426	6.0%
3 Miles and over	354	7,113	20.1	3,025	8.5	58	0.2	5,321,756	31.3%
Sub-Total	967	17,863	18.5	7,774	8.0	146	0.2	10,637,652	62.6%
WEIGHT FOR AGE									
2 Miles	91	1,256	13.8	529	5.8	0	0.0	1,604,607	9.4%
2 ¼ Miles	25	406	16.2	164	6.6	1	0.0	227,990	1.3%
2 ½ Miles	119	2,038	17.1	814	6.8	4	0.0	1,468,303	8.6%
2 ¾ Miles	53	1,002	18.9	378	7.1	4	0.1	485,246	2.9%
3 Miles and over	154	2,450	15.9	1,031	6.7	25	0.2	2,576,739	15.2%
Sub-Total	442	7,152	16.2	2,916	6.6	34	0.1	6,362,885	37.4%
TOTAL	1,409	25,015	17.8	10,690	7.6	180	0.1	17,000,537	100.0%

Notes

The above prize money figures have been rounded up or down as necessary. Consequently, the total prize money may not equate to the sum of the individual parts.

**Prize Money by Source for Pattern Races
Flat Racing
2012**

Prize Money Contributions					
Racecourse	No. of Races	Racecourse Executive plus Sponsors £	HBLB £	Owners' Contribution £	Total Prize Fund £
ASCOT	29	5,708,390	75,000	2,242,530	8,025,920
AYR	1	29,120	5,000	5,880	40,000
CHESTER	4	170,682	40,000	18,525	229,207
DONCASTER	9	1,019,042	10,000	292,950	1,321,992
EPSOM DOWNS	5	1,322,750	20,000	758,750	2,101,500
GOODWOOD	16	1,175,428	70,000	231,935	1,477,363
HAYDOCK PARK	6	393,848	30,000	125,410	549,258
KEMPTON PARK	3	95,630	25,000	11,370	132,000
LINGFIELD PARK	3	170,100	30,000	14,900	215,000
NEWBURY	12	597,684	85,000	115,610	798,294
NEWCASTLE	1	39,225	10,000	5,775	55,000
NEWMARKET	30	2,375,160	100,000	1,160,990	3,636,150
SALISBURY	1	39,750	10,000	5,250	55,000
SANDOWN PARK	9	578,733	65,000	227,045	870,778
WINDSOR	1	39,500	10,000	5,500	55,000
YORK	16	1,990,193	35,000	669,250	2,694,443
TOTAL	146	15,745,235	620,000	5,891,670	22,256,903

NOTES

The above prize money figures have been rounded up or down as necessary. Consequently, the total prize money may not equate to the sum of the individual parts.

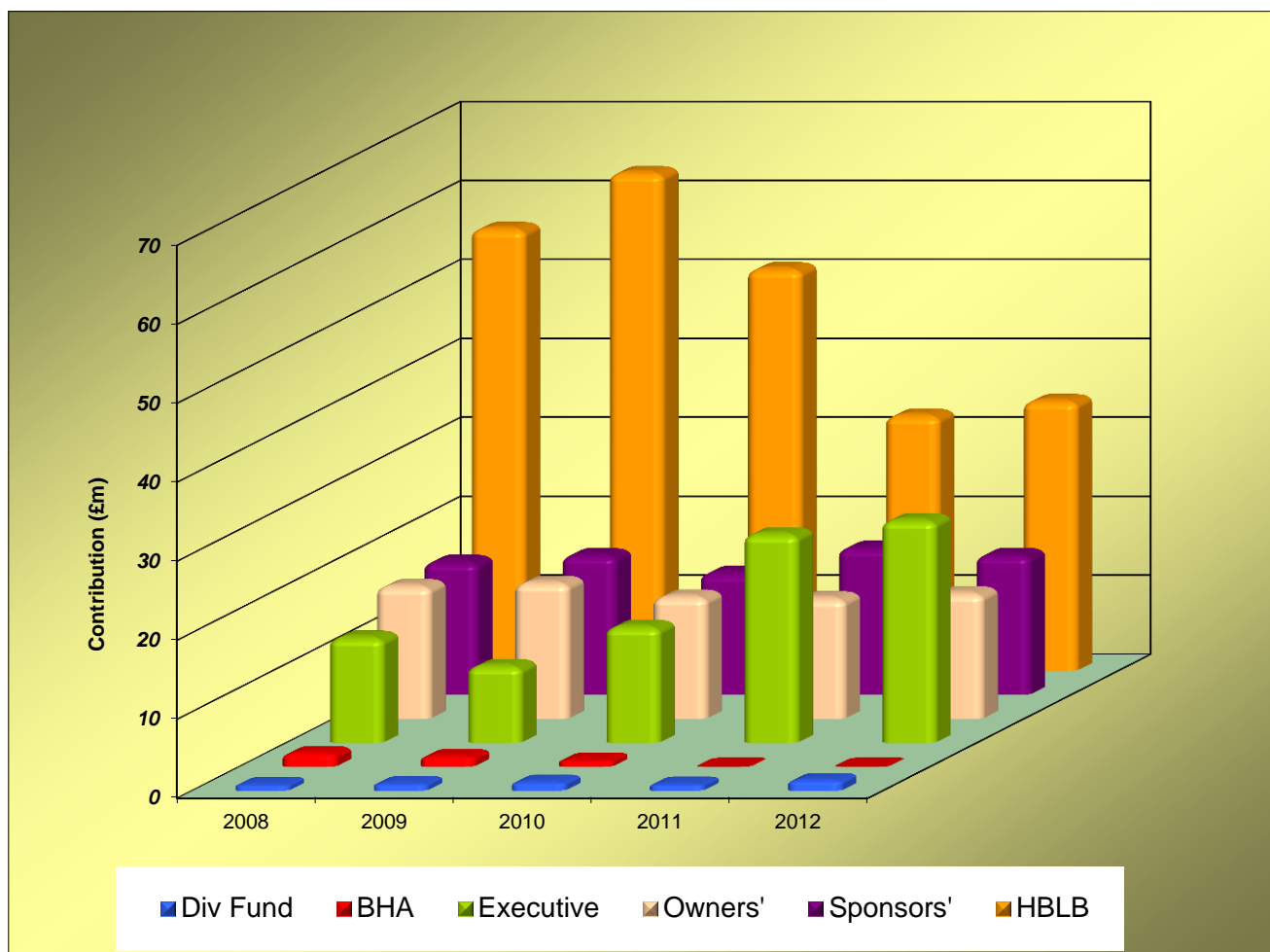
Breakdown of Prize Money by Source

	£ Million						
	Executive	Sponsors'	HBLB	Owners'	BHA	Div Fund	TOTAL
2008	13.42	16.95	56.06	16.91	1.81	0.85	106.00
2009	9.83	17.78	63.14	17.32	1.41	0.97	110.46
2010	14.80	15.55	50.96	15.57	0.90	1.18	98.96
2011	26.52	18.71	32.40	15.36	0.00	0.90	93.89
2012	28.28	17.81	34.26	15.99	0.01	1.43	97.78

Notes

The above figures have been rounded to two decimal places.

Consequently, the TOTAL column will not always equate to the sum of the individual parts.

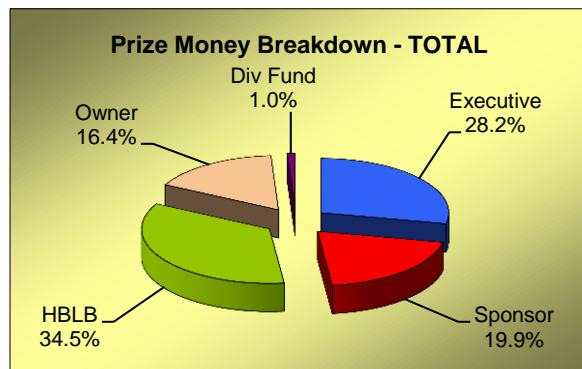
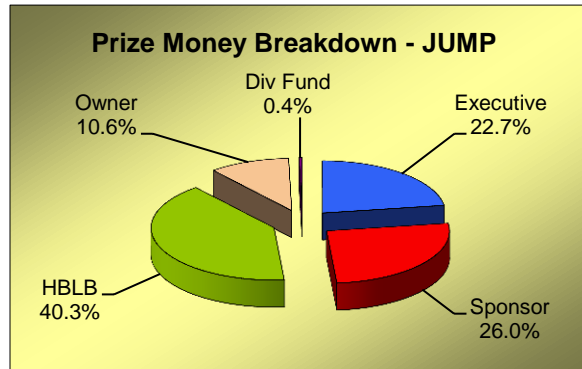
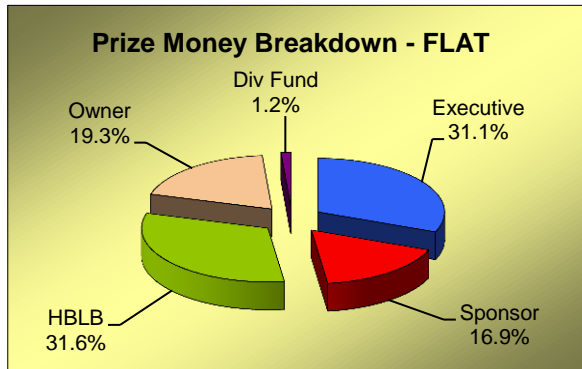


Comparison of Flat/Jump Prize Money Pools

Prize Money Statistics

2011

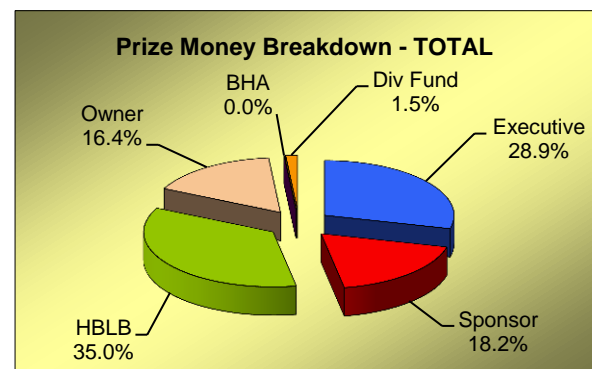
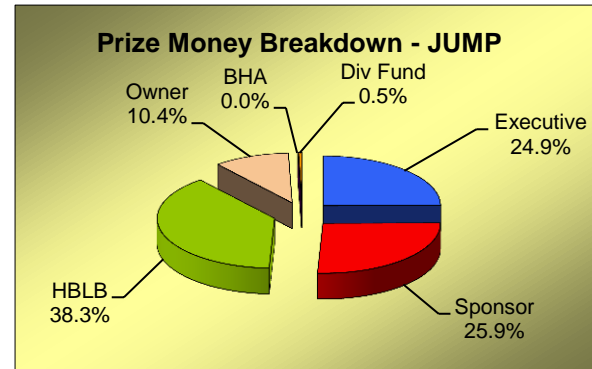
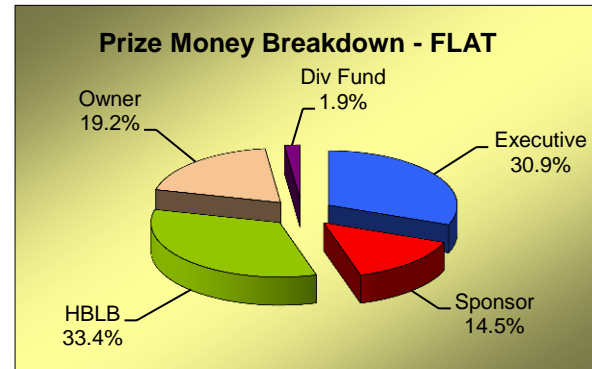
	Flat	Jump	TOTAL
Executive	19,392,214	7,131,589	26,523,803
Sponsor	10,519,600	8,188,040	18,707,640
HBLB	19,703,499	12,697,868	32,401,367
Owner	12,023,491	3,336,429	15,359,920
BHA	0	0	0
Div Fund	774,393	125,800	900,193
TOTAL	62,413,197	31,479,726	93,892,923



Prize Money Statistics

2012

	Flat	Jump	TOTAL
Executive	20,385,977	7,892,548	28,278,525
Sponsor	9,592,287	8,220,718	17,813,005
HBLB	22,083,525	12,174,085	34,257,609
Owner	12,686,553	3,305,594	15,992,147
BHA	0	10,000	10,000
Div Fund	1,273,300	153,750	1,427,050
TOTAL	66,021,642	31,756,695	97,778,337



Notes

The above figures have been rounded up or down as necessary. Consequently, the totals will not always equate to the sum of the individual parts.

Total Prize Money by Racecourse Flat Racing - 2012

	Fixtures Ran (Aban)	Exec+Spons	HBLB	Owners	BHA	Div Fund	TOTAL
AINTREE							
ASCOT		6,394,475	1,702,910	2,647,221	0	0	10,744,606
AYR		325,503	471,330	120,695	0	11,300	928,828
BATH		360,744	190,700	63,756	0	20,400	635,600
BEVERLEY		224,632	293,210	51,482	0	38,350	607,674
BRIGHTON		196,201	224,180	41,401	0	12,500	474,282
CARLISLE		123,580	128,570	34,350	0	17,500	304,000
CATTERICK BRIDGE		225,538	197,622	40,151	0	35,700	499,011
CHEPSTOW		103,969	120,840	27,591	0	12,500	264,900
CHESTER		1,064,098	504,090	87,564	0	18,250	1,674,002
DONCASTER		1,381,738	1,184,400	919,296	0	47,500	3,532,934
EPSOM DOWNS		1,390,762	719,140	851,291	0	7,000	2,968,193
FFOS LAS		143,136	59,880	17,979	0	0	220,995
FOLKESTONE		156,014	119,353	31,233	0	2,500	309,100
GOODWOOD		1,582,448	1,146,290	447,429	0	19,500	3,195,667
HAMILTON PARK		311,457	265,387	48,719	0	3,000	628,563
HAYDOCK PARK		797,042	962,221	318,639	0	27,500	2,105,403
KEMPTON PARK		1,425,866	1,221,550	281,923	0	158,100	3,087,439
LEICESTER		204,794	243,860	58,572	0	19,200	526,426
LINGFIELD PARK		1,149,390	1,638,290	238,303	0	157,900	3,183,883
MUSSELBURGH		397,242	275,880	73,144	0	36,900	783,166
NEWBURY		770,437	900,850	468,017	0	68,500	2,207,804
NEWCASTLE		394,803	214,483	104,617	0	22,900	736,804
NEWMARKET		3,206,544	2,609,140	2,961,244	0	58,000	8,834,928
NOTTINGHAM		211,548	301,270	74,366	0	27,000	614,184
PONTEFRAC T		281,320	374,160	55,030	0	21,300	731,810
REDCAR		202,262	211,800	246,132	0	14,100	674,294
RIPON		358,118	309,820	61,350	0	14,500	743,788
SALISBURY		351,529	296,760	75,829	0	45,050	769,168
SANDOWN PARK		792,646	772,725	348,877	0	12,300	1,926,548
SOUTHWELL		414,188	534,860	68,064	0	21,300	1,038,412
THIRSK		319,680	230,740	80,430	0	38,200	669,050
WARWICK		154,841	106,050	35,209	0	18,500	314,600
WINDSOR		345,469	437,720	107,257	0	27,500	917,946
WOLVERHAMPTON		1,232,311	1,308,353	233,238	0	213,350	2,987,253
YARMOUTH		299,180	380,890	75,127	0	25,200	780,397
YORK		2,684,758	1,424,200	1,291,027	0	0	5,399,985
TOTAL	0	29,978,264	22,083,525	12,686,553	0	1,273,300	66,021,642

Notes

The above figures have been rounded up or down as necessary. Consequently, the totals will not always equate to the sum of the individual parts.

Mixed meetings are included with the Flat figures.

Total Prize Money by Racecourse Jump Racing - 2012

	Fixtures Ran	(Aban)	Exec+Spons	HBLB	Owners	BHA	Div Fund	TOTAL
AINTREE			1,852,896	794,780	445,618	0	0	3,093,294
ASCOT			995,288	492,260	140,656	0	0	1,628,204
AYR			282,948	334,500	85,355	0	0	702,803
BANGOR-ON-DEE			182,294	211,590	32,740	0	2,600	429,224
CARLISLE			145,091	197,490	33,903	0	5,000	381,484
CARTMEL			179,612	80,030	32,167	0	0	291,809
CATTERICK BRIDGE			28,640	204,740	19,120	0	0	252,500
CHELTENHAM			3,460,488	1,278,410	778,031	0	0	5,516,929
CHEPSTOW			166,517	250,400	46,942	0	6,200	470,059
DONCASTER			252,997	271,340	57,810	0	0	582,147
EXETER			175,609	239,970	42,790	0	5,000	463,369
FAKENHAM			211,190	193,960	0	0	0	405,150
FFOS LAS			284,698	274,010	59,438	0	5,000	623,146
FOLKESTONE			86,481	93,180	17,490	0	0	197,151
FONTWELL PARK			301,589	269,000	56,703	0	0	627,292
HAYDOCK PARK			754,472	463,409	127,936	0	0	1,345,817
HEREFORD			212,976	108,500	40,714	0	9,200	371,390
HEXHAM			143,446	166,059	23,754	0	3,000	336,259
HUNTINGDON			119,139	215,930	42,002	0	5,400	382,471
KELSO			279,169	199,540	33,991	6,000	0	518,700
KEMPTON PARK			588,252	460,200	112,445	0	0	1,160,897
LEICESTER			80,776	154,160	26,564	0	0	261,500
LINGFIELD PARK			113,656	61,230	18,473	0	0	193,359
LUDLOW			212,517	271,390	51,836	0	4,000	539,743
MARKET RASEN			379,739	299,840	73,735	0	9,900	763,214
MUSSELBURGH			177,853	222,200	30,783	0	4,000	434,836
NEWBURY			506,367	631,800	146,324	0	0	1,284,491
NEWCASTLE			238,309	224,140	38,762	0	4,500	505,711
NEWTON ABBOT			367,389	254,890	0	0	0	622,279
PERTH			345,455	197,320	19,748	0	0	562,523
PLUMPTON			181,474	219,670	39,257	0	3,300	443,701
SANDOWN PARK			503,261	454,805	106,900	4,000	4,000	1,072,966
SEDGEFIELD			144,552	208,490	32,800	0	0	385,842
SOUTHWELL			212,418	170,810	41,619	0	12,200	437,047
STRATFORD-ON-AVON			379,381	263,448	68,001	0	3,500	714,330
TAUNTON			227,477	240,000	52,513	0	0	519,990
TOWCESTER			138,361	178,504	41,899	0	9,600	368,364
UTTOXETER			289,839	295,450	82,567	0	19,800	687,656
WARWICK			89,836	217,880	36,725	0	0	344,441
WETHERBY			299,279	297,240	53,609	0	4,000	654,128
WINCANTON			383,383	319,260	68,249	0	16,300	787,192
WOLVERHAMPTON								
WORCESTER			138,152	192,260	45,625	0	17,250	393,287
TOTAL	0		16,113,266	12,174,085	3,305,594	10,000	153,750	31,756,695

Notes

The above figures have been rounded up or down as necessary. Consequently, the totals will not always equate to the sum of the individual parts.

Total Prize Money by Racecourse All Racing - 2012

	Fixtures Ran (Aban)	Exec+Spons	HBLB	Owners	BHA	Div Fund	TOTAL
AINTREE		1,852,896	794,780	445,618	0	0	3,093,294
ASCOT		7,389,763	2,195,170	2,787,877	0	0	12,372,810
AYR		608,451	805,830	206,050	0	11,300	1,631,631
BANGOR-ON-DEE		182,294	211,590	32,740	0	2,600	429,224
BATH		360,744	190,700	63,756	0	20,400	635,600
BEVERLEY		224,632	293,210	51,482	0	38,350	607,674
BRIGHTON		196,201	224,180	41,401	0	12,500	474,282
CARLISLE		268,671	326,060	68,253	0	22,500	685,484
CARTMEL		179,612	80,030	32,167	0	0	291,809
CATTERICK BRIDGE		254,178	402,362	59,271	0	35,700	751,511
CHELtenham		3,460,488	1,278,410	778,031	0	0	5,516,929
CHEPSTOW		270,486	371,240	74,533	0	18,700	734,959
CHESTER		1,064,098	504,090	87,564	0	18,250	1,674,002
DONCASTER		1,634,735	1,455,740	977,106	0	47,500	4,115,081
EPSOM DOWNS		1,390,762	719,140	851,291	0	7,000	2,968,193
EXETER		175,609	239,970	42,790	0	5,000	463,369
FAKENHAM		211,190	193,960	0	0	0	405,150
FFOS LAS		427,834	333,890	77,417	0	5,000	844,141
FOLKESTONE		242,494	212,533	48,723	0	2,500	506,251
FONTWELL PARK		301,589	269,000	56,703	0	0	627,292
GOODWOOD		1,582,448	1,146,290	447,429	0	19,500	3,195,667
HAMILTON PARK		311,457	265,387	48,719	0	3,000	628,563
HAYDOCK PARK		1,551,514	1,425,630	446,575	0	27,500	3,451,219
HEREFORD		212,976	108,500	40,714	0	9,200	371,390
HEXHAM		143,446	166,059	23,754	0	3,000	336,259
HUNTINGDON		119,139	215,930	42,002	0	5,400	382,471
KELSO		279,169	199,540	33,991	6,000	0	518,700
KEMPTON PARK		2,014,119	1,681,750	394,368	0	158,100	4,248,337
LEICESTER		285,570	398,020	85,136	0	19,200	787,926
LINGFIELD PARK		1,263,046	1,699,520	256,776	0	157,900	3,377,242
LUDLOW		212,517	271,390	51,836	0	4,000	539,743
MARKET RASEN		379,739	299,840	73,735	0	9,900	763,214
MUSSELBURGH		575,095	498,080	103,927	0	40,900	1,218,002
NEWBURY		1,276,804	1,532,650	614,341	0	68,500	3,492,295
NEWCASTLE		633,112	438,623	143,379	0	27,400	1,242,514
NEWMARKET		3,206,544	2,609,140	2,961,244	0	58,000	8,834,928
NEWTON ABBOT		367,389	254,890	0	0	0	622,279
NOTTINGHAM		211,548	301,270	74,366	0	27,000	614,184
PERTH		345,455	197,320	19,748	0	0	562,523
PLUMPTON		181,474	219,670	39,257	0	3,300	443,701
PONTEFRAC		281,320	374,160	55,030	0	21,300	731,810
REDCAR		202,262	211,800	246,132	0	14,100	674,294
RIPON		358,118	309,820	61,350	0	14,500	743,788
SALISBURY		351,529	296,760	75,829	0	45,050	769,168
SANDOWN PARK		1,295,907	1,227,530	455,777	4,000	16,300	2,999,514
SEDGEFIELD		144,552	208,490	32,800	0	0	385,842
SOUTHWELL		626,606	705,670	109,683	0	33,500	1,475,459
STRATFORD-ON-AVON		379,381	263,448	68,001	0	3,500	714,330
TAUNTON		227,477	240,000	52,513	0	0	519,990
THIRSK		319,680	230,740	80,430	0	38,200	669,050
TOWCESTER		138,361	178,504	41,899	0	9,600	368,364
UTTOXETER		289,839	295,450	82,567	0	19,800	687,656
WARWICK		244,677	323,930	71,934	0	18,500	659,041
WETHERBY		299,279	297,240	53,609	0	4,000	654,128
WINCANTON		383,383	319,260	68,249	0	16,300	787,192
WINDSOR		345,469	437,720	107,257	0	27,500	917,946
WOLVERHAMPTON		1,232,311	1,308,353	233,238	0	213,350	2,987,253
WORCESTER		138,152	192,260	45,625	0	17,250	393,287
YARMOUTH		299,180	380,890	75,127	0	25,200	780,397
YORK		2,684,758	1,424,200	1,291,027	0	0	5,399,985
TOTAL	0	46,091,530	34,257,609	15,992,147	10,000	1,427,050	97,778,337

Notes

The above figures have been rounded up or down as necessary. Consequently, the totals will not always equate to the sum of the individual parts.
Mixed meetings are included with the Flat figures.

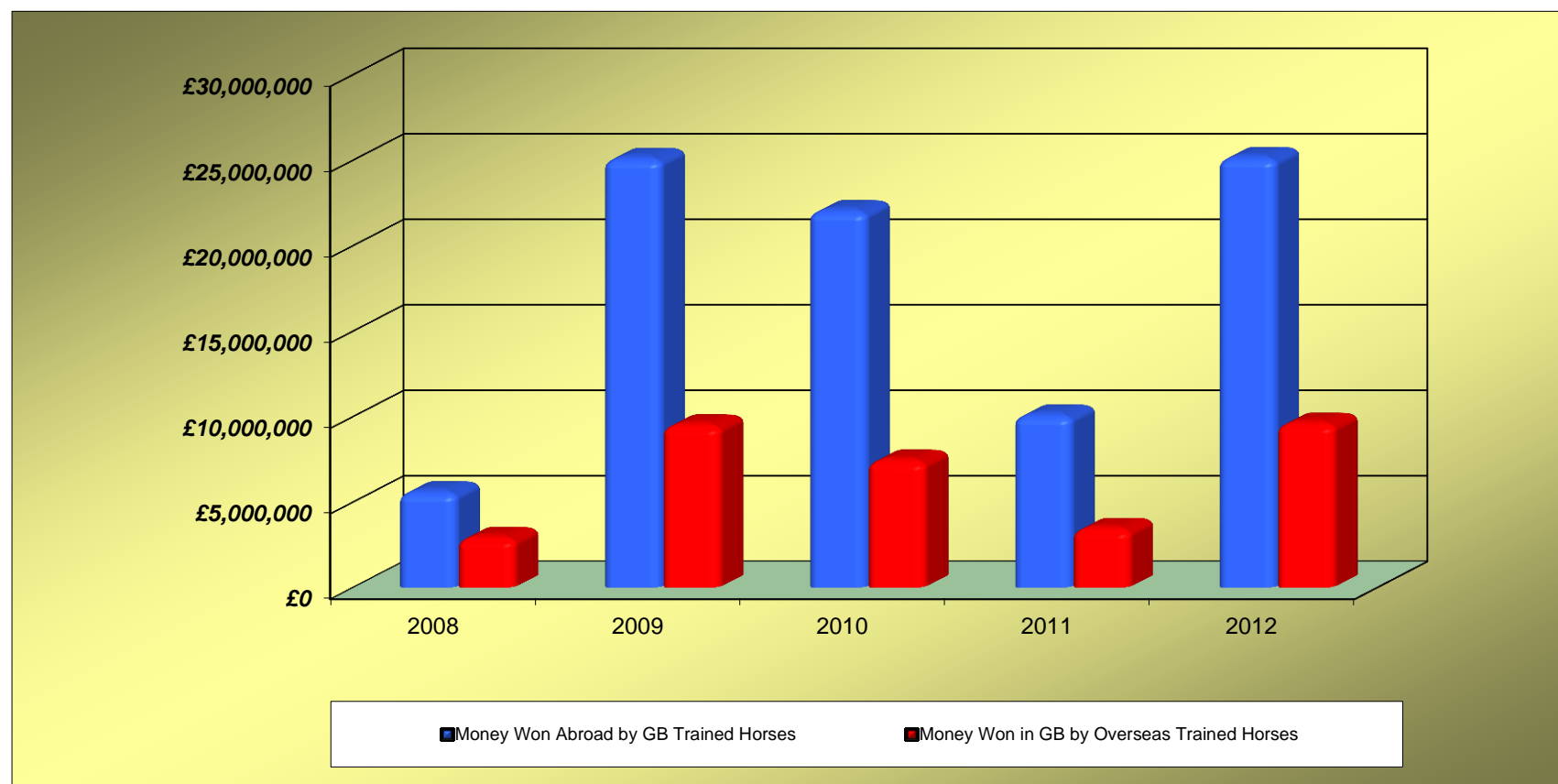
Sponsored Number Cloth Income

2012

	FLAT	JUMP	TOTAL
AINTREE	0	10,500	10,500
ASCOT	34,250	10,500	44,750
AYR	3,750	1,500	5,250
BANGOR-ON-DEE	0	250	250
BATH	0	0	0
BEVERLEY	500	0	500
BRIGHTON	0	0	0
CARLISLE	0	0	0
CARTMEL	0	0	0
CATTERICK BRIDGE	1,000	0	1,000
CHELTENHAM	0	23,250	23,250
CHEPSTOW	0	0	0
CHESTER	5,750	0	5,750
DONCASTER	10,500	4,000	14,500
EPSOM DOWNS	8,000	0	8,000
EXETER	0	250	250
FAKENHAM	0	0	0
FFOS LAS	0	1,250	1,250
FOLKESTONE	0	0	0
FONTWELL PARK	0	750	750
GOODWOOD	14,000	0	22,500
HAMILTON PARK	500	0	500
HAYDOCK PARK	8,000	8,500	16,500
HEREFORD	0	0	0
HEXHAM	0	0	0
HUNTINGDON	0	0	0
KELSO	0	250	250
KEMPTON PARK	3,500	6,000	9,500
LEICESTER	0	0	0
LINGFIELD PARK	6,750	0	6,750
LUDLOW	0	0	0
MARKET RASEN	0	1,500	1,500
MUSSELBURGH	2,000	0	2,000
NEWBURY	11,750	10,000	21,750
NEWCASTLE	2,750	1,500	4,250
NEWMARKET	35,750	0	35,750
NEWTON ABBOT	0	0	0
NOTTINGHAM	0	0	0
PERTH	0	0	0
PLUMPTON	0	0	0
PONTEFRAC	0	0	0
REDCAR	500	0	500
RIPON	1,000	0	1,000
SALISBURY	500	0	500
SANDOWN PARK	8,000	8,250	16,250
SEDFIELD	0	0	0
SOUTHWELL	0	0	0
STRATFORD-ON-AVON	0	0	0
TAUNTON	0	0	0
THIRSK	500	0	500
TOWCESTER	0	0	0
UTTOXETER	0	2,250	2,250
WARWICK	0	1,500	1,500
WETHERBY	0	2,000	2,000
WINCANTON	0	2,000	2,000
WINDSOR	0	0	0
WOLVERHAMPTON	1,000	0	1,000
WORCESTER	0	0	0
YARMOUTH	0	0	0
YORK	22,500	0	22,500
TOTAL	182,750	96,000	287,250

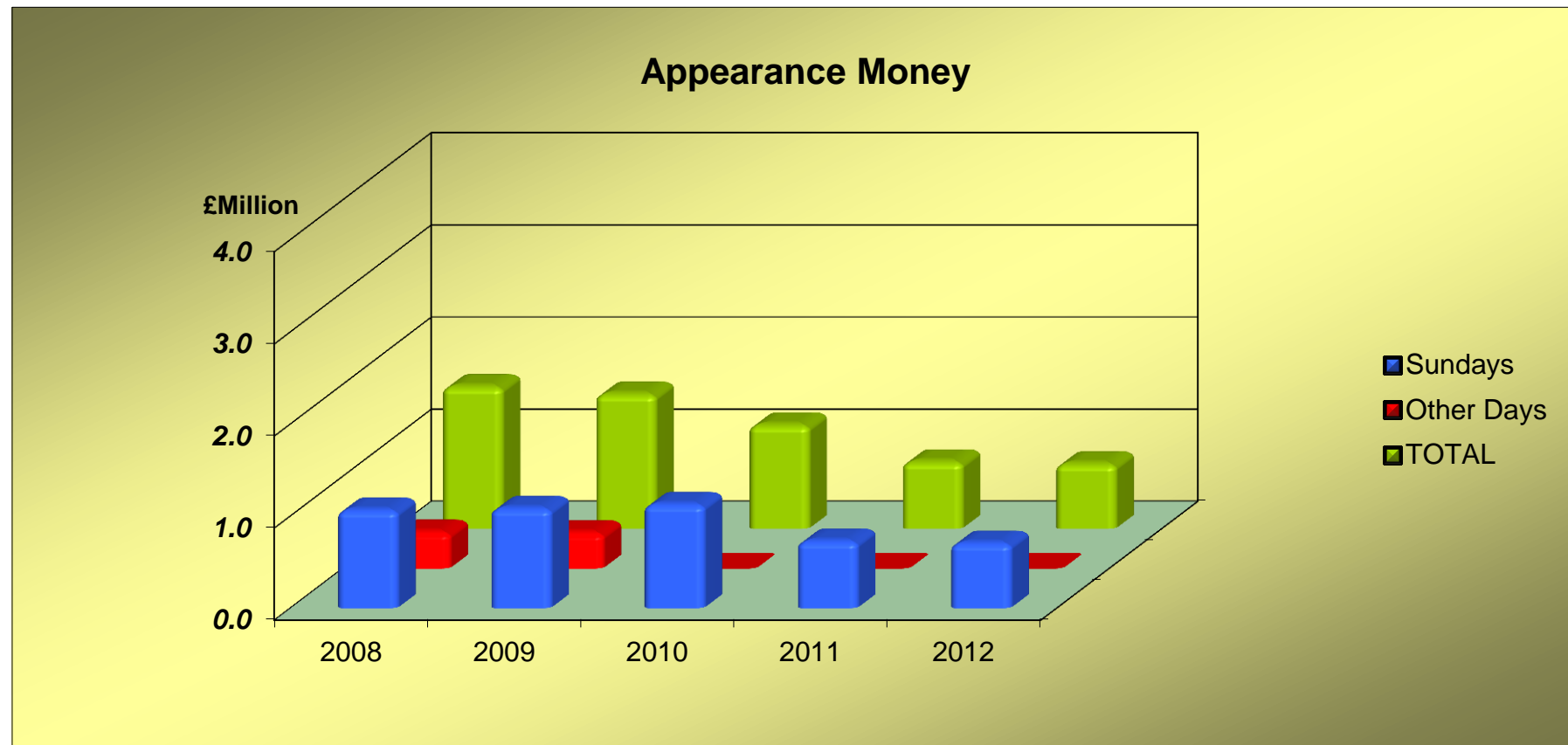
Prize Money Entering and Leaving Great Britain

	2008	2009	2010	2011	2012
Prize Money WON ABROAD					
by horses trained in Great Britain	5,621,876	25,124,821	22,067,795	10,111,330	25,174,668
Prize Money WON IN GREAT BRITAIN					
by horses trained outside of Great Britain	2,947,770	9,531,883	7,469,596	3,478,530	9,633,700



Appearance Money Payments

	2008 £	2009 £	2010 £	2011 £	2012 £
APPEARANCE MONEY					
Sundays	1,069,450	1,087,350	1,131,165	731,800	709,700
Other Days	398,500	391,100	0	0	0
TOTAL	1,548,640	1,467,950	1,131,165	731,800	709,700



SECTION E

RACECOURSES

TABLE 1

Racecourse Activities

The number of Fixtures that took place and that were Abandoned, the number of Races, Entries and Runners, and the total Public Attendance for each Racecourse. Average Runners per Race and Average Daily Attendance is also shown. Mixed Fixtures are counted as Flat Fixtures for the purposes of these tables. A separate table is shown for Flat Racing, Jump Racing and All Racing.

TABLE 2

Monthly Attendance Figures

The total Public Attendances at Racecourses each month by Flat, Jump and Total for the last 5 years. Mixed Meeting Attendances are included with the Flat figures.

TABLE 3

Daily Spread of Public Attendances

An analysis of Public Attendances at Racecourses, Flat and Jump shown separately, on each day of the week and Bank Holidays during the year, for the last 5 years. Mixed Meeting Attendances are included with the Flat figures.

Racecourse Activities

2012

Flat

Racecourse	Fixtures	Abandoned	Races	Entries	Runners	Ave Runners	Attendance	Ave Attendance
AINTREE								
ASCOT			109	3,502	1,367	12.5		
AYR			114	2,453	1,027	9.0		
BANGOR-ON-DEE								
BATH			148	3,451	1,412	9.5		
BEVERLEY			125	2,627	1,206	9.6		
BRIGHTON			133	2,622	1,129	8.5		
CARLISLE			56	1,320	556	9.9		
CARTMEL								
CATTERICK BRIDGE			117	2,285	1,129	9.6		
CHELTENHAM								
CHEPSTOW			82	1,853	762	9.3		
CHESTER			103	2,405	910	8.8		
DONCASTER			169	5,464	1,995	11.8		
EPSOM DOWNS			77	2,144	706	9.2		
EXETER								
FAKENHAM								
FFOS LAS			46	817	298	6.5		
FOLKESTONE			77	1,601	580	7.5		
FONTWELL PARK								
GOODWOOD			123	2,992	1,273	10.3		
HAMILTON PARK			99	1,870	759	7.7		
HAYDOCK PARK			152	4,162	1,374	9.0		
HEREFORD								
HEXHAM								
HUNTINGDON								
KELSO								
KEMPTON PARK			645	12,577	6,402	9.9		
LEICESTER			98	2,493	924	9.4		
LINGFIELD PARK			663	11,502	5,929	8.9		
LUDLOW								
MARKET RASEN								
MUSSELBURGH			109	2,121	1,012	9.3		
NEWBURY			124	3,474	1,288	10.4		
NEWCASTLE			109	2,721	1,061	9.7		
NEWMARKET			273	9,111	2,990	11.0		
NEWTON ABBOT								
NOTTINGHAM			114	3,088	1,159	10.2		
PERTH								
PLUMPTON								
PONTEFRAC			104	2,595	993	9.5		
REDCAR			107	2,694	1,130	10.6		
RIPON			95	2,067	921	9.7		
SALISBURY			101	2,591	955	9.5		
SANDOWN PARK			106	2,745	953	9.0		
SEDGEFIELD								
SOUTHWELL			301	4,487	2,508	8.3		
STRATFORD-ON-AVON								
TAUNTON								
THIRSK			103	2,645	1,174	11.4		
TOWCESTER								
UTTOXETER								
WARWICK								
WETHERBY								
WINCANTON								
WINDSOR			138	3,614	1,339	9.7		
WOLVERHAMPTON			839	15,956	7,957	9.5		
WORCESTER			51	1,250	497	9.7		
YARMOUTH			182	3,820	1,548	8.5		
YORK			115	3,669	1,370	11.9		
TOTAL	0	0	6,107	136,788	58,593	9.6	0	#DIV/0!

Notes

Mixed attendances are included with the Flat figures.

Racecourse Activities

2012

Jump

Racecourse	Fixtures	Abandoned	Races	Entries	Runners	Ave Runners	Attendance	Ave Attendance
AINTREE			56	1,354	643	11.5		
ASCOT			53	1,046	479	9.0		
AYR			73	1,396	586	8.0		
BANGOR-ON-DEE			94	1,972	767	8.2		
BATH								
BEVERLEY								
BRIGHTON								
CARLISLE			69	1,310	553	8.0		
CARTMEL			48	1,061	391	8.1		
CATTERICK BRIDGE			54	1,051	545	10.1		
CHELTENHAM			108	3,444	1,363	12.6		
CHEPSTOW			72	1,741	677	9.4		
CHESTER								
DONCASTER			54	1,299	464	8.6		
EPSOM DOWNS								
EXETER			75	1,665	645	8.6		
FAKENHAM			63	1,188	479	7.6		
FFOS LAS			117	2,367	893	7.6		
FOLKESTONE			53	967	413	7.8		
FONTWELL PARK			155	2,969	1,246	8.0		
GOODWOOD			56	1,283	491	8.8		
HAMILTON PARK								
HAYDOCK PARK								
HEREFORD			107	2,485	980	9.2		
HEXHAM			84	1,489	613	7.3		
HUNTINGDON			87	1,994	802	9.2		
KELSO			75	1,408	644	8.6		
KEMPTON PARK			75	1,674	713	9.5		
LEICESTER			49	1,003	370	7.6		
LINGFIELD PARK			40	812	353	8.8		
LUDLOW			92	1,944	859	9.3		
MARKET RASEN			130	2,819	1,127	8.7		
MUSSELBURGH			62	1,053	570	9.2		
NEWBURY			77	1,813	787	10.2		
NEWCASTLE			78	1,445	703	9.0		
NEWMARKET								
NEWTON ABBOT			103	2,318	876	8.5		
NOTTINGHAM								
PERTH			80	1,668	600	7.5		
PLUMPTON			106	1,979	798	7.5		
PONTEFRAC								
REDCAR								
RIPON								
SALISBURY								
SANDOWN PARK			56	1,256	553	9.9		
SEDFIELD			105	1,887	906	8.6		
SOUTHWELL			108	2,503	984	9.1		
STRATFORD-ON-AVON			121	2,580	1,122	9.3		
TAUNTON			84	1,877	840	10.0		
THIRSK								
TOWCESTER			111	2,638	997	9.0		
UTTOXETER			156	3,891	1,429	9.2		
WARWICK			55	1,337	536	9.7		
WETHERBY			89	1,882	799	9.0		
WINCANTON			100	2,140	887	8.9		
WINDSOR								
WOLVERHAMPTON								
WORCESTER			110	2,732	1,098	10.0		
YARMOUTH								
YORK								
TOTAL	0	0	3,540	76,740	31,581	8.9	0	#DIV/0!

Racecourse Activities

2012

All Racing

Racecourse	Fixtures	Abandoned	Races	Entries	Runners	Ave Runners	Attendance	Ave Attendance
AINTREE	0		56	1,354	643	11.5		#DIV/0!
ASCOT	0		162	4,548	1,846	11.4		#DIV/0!
AYR	0		187	3,849	1,613	8.6		#DIV/0!
BANGOR-ON-DEE	0		94	1,972	767	8.2		#DIV/0!
BATH	0		148	3,451	1,412	9.5		#DIV/0!
BEVERLEY	0		125	2,627	1,206	9.6		#DIV/0!
BRIGHTON	0		133	2,622	1,129	8.5		#DIV/0!
CARLISLE	0		125	2,630	1,109	8.9		#DIV/0!
CARTMEL	0		48	1,061	391	8.1		#DIV/0!
CATTERICK BRIDGE	0		171	3,336	1,674	9.8		#DIV/0!
CHELTENHAM	0		108	3,444	1,363	12.6		#DIV/0!
CHEPSTOW	0		154	3,594	1,439	9.3		#DIV/0!
CHESTER	0		103	2,405	910	8.8		#DIV/0!
DONCASTER	0		223	6,763	2,459	11.0		#DIV/0!
EPSOM DOWNS	0		77	2,144	706	9.2		#DIV/0!
EXETER	0		75	1,665	645	8.6		#DIV/0!
FAKENHAM	0		63	1,188	479	7.6		#DIV/0!
FFOS LAS	0		163	3,184	1,191	7.3		#DIV/0!
FOLKESTONE	0		130	2,568	993	7.6		#DIV/0!
FONTWELL PARK	0		155	2,969	1,246	8.0		#DIV/0!
GOODWOOD	0		179	4,275	1,764	9.9		#DIV/0!
HAMILTON PARK	0		99	1,870	759	7.7		#DIV/0!
HAYDOCK PARK	0		152	4,162	1,374	9.0		#DIV/0!
HEREFORD	0		107	2,485	980	9.2		#DIV/0!
HEXHAM	0		84	1,489	613	7.3		#DIV/0!
HUNTINGDON	0		87	1,994	802	9.2		#DIV/0!
KELSO	0		75	1,408	644	8.6		#DIV/0!
KEMPTON PARK	0		720	14,251	7,115	9.9		#DIV/0!
LEICESTER	0		147	3,496	1,294	8.8		#DIV/0!
LINGFIELD PARK	0		703	12,314	6,282	8.9		#DIV/0!
LUDLOW	0		92	1,944	859	9.3		#DIV/0!
MARKET RASEN	0		130	2,819	1,127	8.7		#DIV/0!
MUSSELBURGH	0		171	3,174	1,582	9.3		#DIV/0!
NEWBURY	0		201	5,287	2,075	10.3		#DIV/0!
NEWCASTLE	0		187	4,166	1,764	9.4		#DIV/0!
NEWMARKET	0		273	9,111	2,990	11.0		#DIV/0!
NEWTON ABBOT	0		103	2,318	876	8.5		#DIV/0!
NOTTINGHAM	0		114	3,088	1,159	10.2		#DIV/0!
PERTH	0		80	1,668	600	7.5		#DIV/0!
PLUMPTON	0		106	1,979	798	7.5		#DIV/0!
PONTEFRACT	0		104	2,595	993	9.5		#DIV/0!
REDCAR	0		107	2,694	1,130	10.6		#DIV/0!
RIPON	0		95	2,067	921	9.7		#DIV/0!
SALISBURY	0		101	2,591	955	9.5		#DIV/0!
SANDOWN PARK	0		162	4,001	1,506	9.3		#DIV/0!
SEDFIELD	0		105	1,887	906	8.6		#DIV/0!
SOUTHWELL	0		409	6,990	3,492	8.5		#DIV/0!
STRATFORD-ON-AVON	0		121	2,580	1,122	9.3		#DIV/0!
TAUNTON	0		84	1,877	840	10.0		#DIV/0!
THIRSK	0		103	2,645	1,174	11.4		#DIV/0!
TOWCESTER	0		111	2,638	997	9.0		#DIV/0!
UTTOXETER	0		156	3,891	1,429	9.2		#DIV/0!
WARWICK	0		55	1,337	536	9.7		#DIV/0!
WETHERBY	0		89	1,882	799	9.0		#DIV/0!
WINCANTON	0		100	2,140	887	8.9		#DIV/0!
WINDSOR	0		138	3,614	1,339	9.7		#DIV/0!
WOLVERHAMPTON	0		839	15,956	7,957	9.5		#DIV/0!
WORCESTER	0		161	3,982	1,595	9.9		#DIV/0!
YARMOUTH	0		182	3,820	1,548	8.5		#DIV/0!
YORK	0		115	3,669	1,370	11.9		#DIV/0!
TOTAL	0	0	9,647	213,528	90,174	9.3	0	#DIV/0!

Notes

Mixed attendances are included with the Flat figures.

Racecourse Activities

Monthly Attendance Figures

	2008			2009			2010			2011			2012		
	Flat	Jump	Total	Flat	Jump	Total	Flat	Jump	Total	Flat	Jump	Total	Flat	Jump	Total
JAN	35,344	121,924	157,268	31,599	123,009	154,608	31,532	95,003	126,535	34,655	146,733	181,388	31,361	149,155	180,516
FEB	33,218	136,404	169,622	23,305	115,061	138,366	28,317	110,814	139,131	27,148	139,007	166,155	23,766	92,869	116,635
MAR	54,198	341,119	395,317	42,029	365,109	407,138	35,680	377,607	413,287	29,584	385,643	415,227	46,493	397,646	444,139
APR	155,151	317,817	472,968	167,386	329,362	496,748	185,652	347,279	532,931	271,015	371,773	642,788	141,344	295,448	436,792
MAY	517,287	179,763	697,050	495,093	183,405	678,498	527,770	182,474	710,244	492,632	154,394	647,026	448,357	116,050	564,407
JUN	841,041	107,690	948,731	786,909	92,193	879,102	794,778	93,623	888,401	824,308	102,170	926,478	837,504	110,721	948,225
JUL	774,801	83,769	858,570	818,725	80,523	899,248	913,245	77,201	990,446	948,098	85,445	1,033,543	624,244	74,463	698,707
AUG	617,851	84,313	702,164	680,241	95,133	775,374	677,035	107,449	784,484	644,244	105,317	749,561	782,357	81,232	863,589
SEP	336,992	48,610	385,602	362,384	57,354	419,738	390,517	51,857	442,374	360,076	49,875	409,951	389,048	48,639	437,687
OCT	183,362	138,204	321,566	201,433	158,065	359,498	196,349	167,877	364,226	206,338	158,040	364,378	207,313	130,230	337,543
NOV	54,180	264,446	318,626	35,845	257,510	293,355	38,309	241,800	280,109	38,601	258,967	297,568	40,967	233,789	274,756
DEC	51,724	237,448	289,172	39,346	179,757	219,103	35,679	61,534	97,213	40,811	276,408	317,219	27,909	252,310	280,219
TOTAL	3,655,149	2,061,507	5,716,656	3,684,295	2,036,481	5,720,776	3,854,863	1,914,518	5,769,381	3,917,510	2,233,772	6,151,282	3,600,663	1,982,552	5,583,215

Notes

Mixed attendances are included with the Flat figures.

Racecourse Attendances

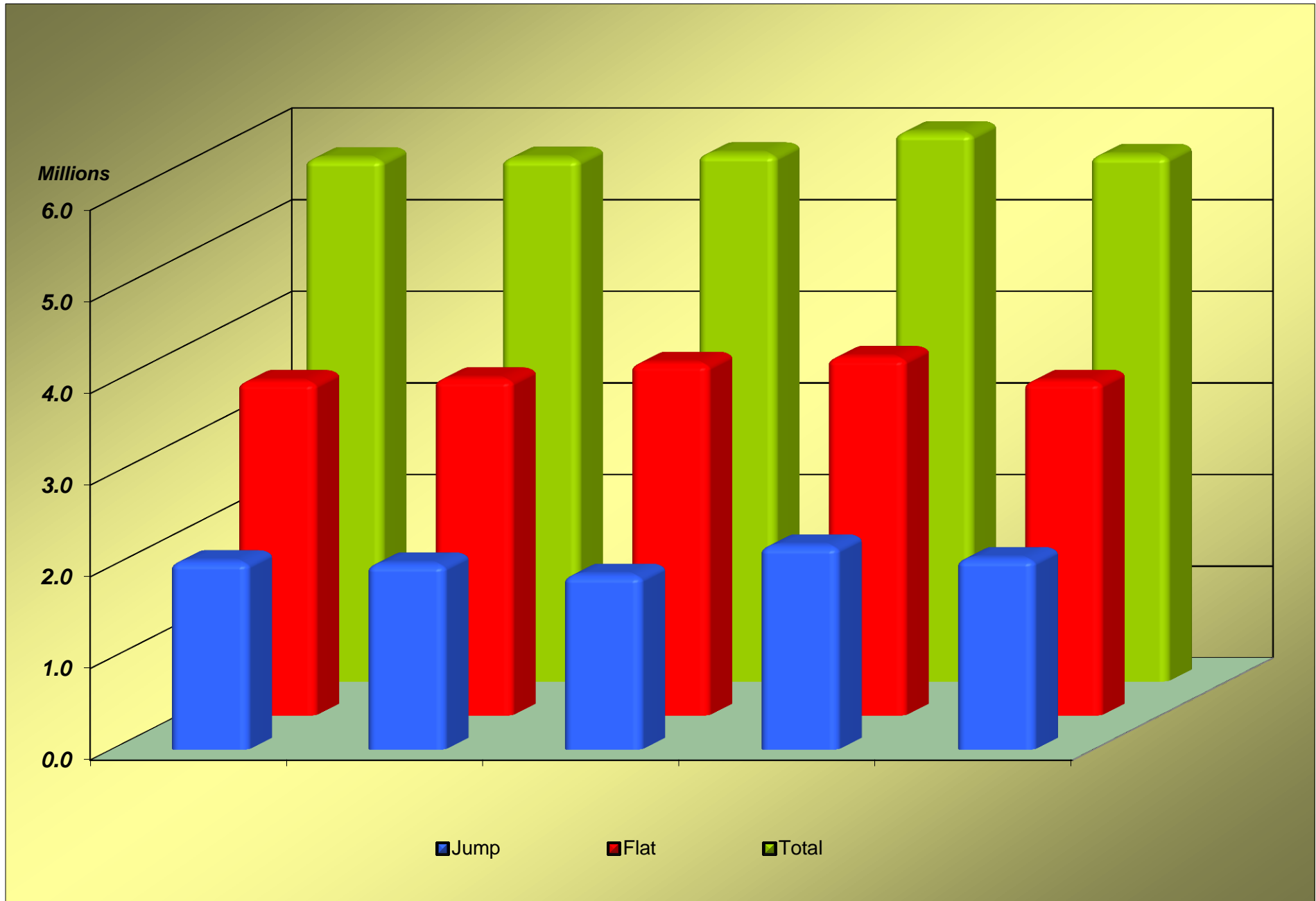
Daily Spread Of Public Attendances

	2008			2009			2010			2011			2012		
	Flat	Jump	Total	Flat	Jump	Total	Flat	Jump	Total	Flat	Jump	Total	Flat	Jump	Total
MON	213,377	84,054	297,431	193,477	72,995	266,472	199,861	70,884	270,745	202,012	93,299	295,311	219,768	105,296	325,064
TUE	223,605	153,416	377,021	227,120	154,256	381,376	221,610	153,636	375,246	215,122	168,490	383,612	216,470	153,946	370,416
WED	329,828	152,823	482,651	354,446	178,600	533,046	352,848	198,001	550,849	397,621	206,603	604,224	329,951	249,278	579,229
THU	452,677	263,798	716,475	430,195	248,173	678,368	482,163	242,218	724,381	440,708	279,897	720,605	401,898	250,050	651,948
FRI	778,197	376,597	1,154,794	720,044	362,985	1,083,029	777,436	330,261	1,107,697	752,164	339,564	1,091,728	697,615	334,786	1,032,401
SAT	1,337,189	613,730	1,950,919	1,377,363	616,605	1,993,968	1,456,742	535,369	1,992,111	1,554,790	687,717	2,242,507	1,494,957	629,615	2,124,572
SUN	267,788	273,991	541,779	289,419	311,264	600,683	276,011	293,513	569,524	240,411	278,839	519,250	228,794	268,824	497,618
B/HOL	52,488	143,098	195,586	92,231	91,603	183,834	88,192	90,636	178,828	114,682	179,363	294,045	69,512	102,700	172,212
TOTAL	3,655,149	2,061,507	5,716,656	3,684,295	2,036,481	5,720,776	3,854,863	1,914,518	5,769,381	3,917,510	2,233,772	6,151,282	3,658,965	2,094,495	5,753,460

Notes

Mixed attendances are included with the Flat figures.

Racecourse Attendances



SECTION F

HORSERACE BETTING AND LEVY

TABLE 1

Levy Board Income and Expenditure (Financial Years)

The Levy and Levy Board Income

The total Horserace Betting Levy Board income in the last 5 financial years broken down into:

- a) From Bookmakers
- b) From Totalisator Board (tote)
- c) Other Levy Board Income (Net Interest)
- d) Other Contributions
- e) Total Income

Allocation of Levy: Levy Board Expenditure

An analysis of the expenditure of the Horserace Betting Levy Board.

Betting and Levy Board Statistics

Levy Board Income and Expenditure - Financial Years ^(a)

	2007-2008 £ Thousand	2008-2009 £ Thousand	2009-2010 £ Thousand	2010-2011 £ Thousand	2011-2012 £ Thousand
THE LEVY AND LEVY BOARD INCOME					
Bookmakers	107,300	82,867	66,928	59,767	67,889
Totalisator Board (tote) ^(b)	9,200	8,779	7,553	-	-
Other Levy Board Income ^(c)	1,446	1,832	855	251	119
Other Contributions		1,352	0	219	6,866
TOTAL INCOME	117,946	94,830	75,336	60,237	74,874
ALLOCATION OF LEVY: LEVY BOARD EXPENDITURE					
Horsemen	56,647	59,418	64,000	48,963	33,736
Integrity Services	35,529	24,978	25,342	21,835	16,399
Racecourses	6,689	6,958	6,638	3,910	1,533
Training	964	973	1,225	892	910
Improvement of Breeds	1,845	1,917	2,056	1,245	691
Veterinary	2,364	2,633	2,055	1,009	907
Administration	3,631	3,614	3,153	3,403	2,622
Bookmakers' Committee	253	264	261	535	244
Channel 4	879	458	225	970	894
Point-to-Point	309	312	396	243	207
Racing For Change	-	-	-	350	-
Other	2,740	450	514	454	1,073
TOTAL EXPENDITURE	111,850	101,975	105,865	83,809	59,216

Source: Levy Board Annual Reports

Notes

(a) Financial year April 1st to March 31st Levy Period

(b) From 2010-2011 onwards, Levy from the tote is not shown separately in the Levy Board accounts

(c) Net Interest

SECTION G

POINT TO POINT RACING

TABLE 1

Fixture Statistics

An analysis of the number of Courses, Meetings, Abandonments, Postponements and Re-Arrangements each season for the last 5 seasons. A breakdown of courses by number of fixtures held is also shown.

TABLE 2

Point to Point Horse and Race Statistics

Point to Point by Race Type

An analysis of the Number of Races, Number of Runners and Average Number of Runners per Race for each type of Race.

All Races

Totals for the season of:

- a) Number of Registered Hunters' Certificates
- b) Number of Races Run
- c) Number of Entries
- d) Number of Runners
- e) Average Number of Runners per Race

Point to Point Racing

Number of Courses, Meetings and Abandonments

	2007/8	2008/9	2009/10	2010/11	2011/12
No. of Scheduled Meetings	213	212	213	208	210
No. of Actual Meetings	209	205	194	197	190
No. of Meetings Abandoned	4	7	19	11	20
No. of Meetings Postponed	11	11	16	4	8
No. of Meetings Re-Arranged	1	5	5	6	3
No. of Mid-Week Fixtures (exc. Bank Holidays)	4	4	2	3	3
Duration of Season in Weeks	28	28	28	29	29
Total No. of Courses	117	117	118	118	115
No. of Courses with 1 Fixture	59	57	58	60	54
No. of Courses with 2 Fixtures	40	36	38	38	39
No. of Courses with 3 Fixtures	14	17	14	12	14
No. of Courses with 4 Fixtures	5	5	5	5	5
No. of Courses with 5 or more Fixtures	2	2	3	3	3

Point to Point Racing

Number of Races and Runners by Type of Race

2011/12

Type of Race	No. of Races	No. of Runners	Average No. of Runners Per Race
Hunt Members	122	507	4.2
Club Members	169	1,302	7.7
Confined	76	586	7.7
Intermediate	71	455	6.4
Ladies Open	136	807	5.9
Mens Open	136	824	6.1
Mixed Open	51	343	6.7
Restricted	184	1,715	9.3
Club Members Maiden	22	222	10.1
Confined Maiden	10	107	10.7
3m Open Maiden	277	2,827	10.2
2m4f/2m5f Maiden	75	707	9.4

No. of Registered Hunters' Certificates:	3,381
Total No. of Races:	1,329
Total No. of Entries *	23,195
Total No. of Runners:	10,402
Average No. of Runners per Race:	7.8

* Including Entries for Abandoned Meetings

SECTION H

STABLE EMPLOYEES

TABLE 1

1. Total Number of Persons on File
2. Number in Full Time Current Employment with Licensed Trainers
3. Number in Full Time Current Employment with Permitted Trainers
4. Total Number in Full Time Current Employment
5. Number in Part Time Current Employment with Licensed Trainers
6. Number in Part Time Current Employment with Permitted Trainers
7. Total Number in Part Time Current Employment

MALE AND FEMALE ARE SHOWN SEPARATELY

These figures exclude those people who are registered as Self-Employed.

TABLE 2

Totals by Job Category

The number of Stable Employees broken down by type of job.

MALE AND FEMALE ARE SHOWN SEPARATELY

TABLE 3

Totals by Age Group

The number of Stable Employees broken down by age group.

Stable Employees

Number of People Employed Full and Part Time With Licensed and Permitted Trainers

	2008		2009		2010		2011		2012	
	Male	Female	Male	Female	Male	Female	Male	Female	Male	Female
Total on File	4,027	3,133	4,066	2,978	4,036	2,863	3,718	2,764	4,027	2,759
Employed Full Time - with Licensed Trainers	3,081	1,777	3,089	1,661	3,075	1,594	2,748	1,532	3,094	1,521
Employed Full Time - with Permitted Trainers	27	31	25	39	25	40	34	44	26	35
Employed Full Time - TOTAL	3,108	1,808	3,114	1,700	3,100	1,634	2,782	1,576	3,120	1,556
Employed Part Time - with Licensed Trainers	856	1,223	883	1,155	858	1,112	852	1,071	825	1,083
Employed Part Time - with Permitted Trainers	63	102	69	123	78	117	84	117	82	120
Employed Part Time - TOTAL	919	1,325	952	1,278	936	1,229	936	1,188	907	1,203

Notes

The above figures exclude those people registered as Self-Employed.

Stable Employees

Distribution by Category of Job

	2008		2009		2010		2011		2012	
	Male	Female	Male	Female	Male	Female	Male	Female	Male	Female
Assistant Trainer	276	248	277	249	272	246	273	242	255	227
Head Lad	217	101	216	103	207	96	190	106	196	102
Travelling Head Lad	164	94	167	87	151	87	149	88	150	88
Stable Lad/Lass	1,965	1,594	1,976	1,497	1,886	1,412	1,847	1,357	1,877	1,367
Trainee Stable Lad/Lass	61	88	45	81	56	71	39	62	43	69
Apprentice/Conditional Jockey	159	27	141	27	143	32	155	32	163	34
Box Driver	158	32	156	25	116	43	156	44	145	39
Secretary	29	319	31	295	29	290	29	284	25	280
Pupil Under Training	82	94	68	84	66	68	70	69	69	64
Work Rider	532	441	617	459	697	448	750	427	734	443
Gallopman	71	1	64	4	61	4	62	1	60	1
Yardman	343	108	316	94	310	98	297	93	298	102
Feedman	6	4	6	5	6	6	10	6	10	7
Hackman	9	12	10	11	10	13	6	11	5	10
Blacksmith	39	1	39	1	41	1	37	1	40	1
Hostel Employee	2	5	16	15	6	7	5	6	33	8
Hostel Cook	-	-	-	-	-	-	24	10	-	-
Yard Security	-	-	-	-	-	-	-	-	12	11
Other Duties	354	312	362	308	360	291	360	281	374	282
TOTAL	4,467	3,481	4,507	3,345	4,417	3,213	4,459	3,120	4,489	3,135

Stable Employees

Distribution by Age Group

	2008	2009	2010	2011	2012
16 and under	133	122	118	105	104
17	212	176	163	171	170
18	251	244	201	195	209
19	246	238	250	232	213
20-24	1,320	1,245	1,166	1,191	1,251
25-29	1,242	1,236	1,172	1,134	1,110
30-34	917	947	952	925	964
35-39	854	822	774	755	730
40-44	764	788	738	724	714
45-49	624	625	682	656	660
50-54	485	491	475	508	521
55-59	326	335	354	379	366
60-64	241	249	255	270	256
65 and over	333	334	330	334	356
TOTAL	7,948	7,852	7,630	7,579	7,624