

# SECTION A

## BREEDING

### TABLE 1

#### Breeding Statistics

##### Lines 1 to 6

##### Registered Stallions and Mares Reported at Stud

The number of Registered Stallions in Great Britain and Ireland and the number of Mares Reported at Stud in Great Britain and Ireland, as contained in the Return of Mares. Prior to 2004, these figures could not be shown separately for Great Britain and Ireland so a combined total is given.

##### Lines 7 to 13

##### Number of Live Thoroughbred Foals

The number of live Thoroughbred Foals born in Great Britain (England, Scotland and Wales) and Ireland (Irish Republic and Northern Ireland) as reported to the Stud Book Authority during the year and as contained in the Return of Mares.

##### Lines 14 to 16

##### Number of Names Registered under the Orders and Rules of Racing

The number of horses' names registered in a year with the Names Section of Racing Administration Department at Weatherbys and expressed in two parts – Thoroughbred and Non-Thoroughbred.

##### Line 17

##### Number of Horses Exported from Great Britain and Ireland

The number of horses for which Application forms for Release of Stud Book Certificates have been received and actioned by the Stud Book Authority during the year.

### TABLE 2

#### Analysis of Exported Horses

An analysis by country of importation of the number of horses exported from Great Britain and Ireland during the year. The top 15 countries are shown, together with an aggregate of all the other destinations.

## Breeding Statistics

	2002	2003	2004	2005	2006
1. No. of Registered Stallions That Stood in Great Britain	N/A	N/A	446	326	374
2. No. of Registered Stallions That Stood in Ireland	N/A	N/A	369	377	392
3. Total No. of Registered Stallions That Stood in Great Britain and Ireland	824	905	815	703	766
4. No. of Mares Reported at Stud in Great Britain	N/A	N/A	12,938	11,947	11,326
5. No. of Mares Reported at Stud in Ireland	N/A	N/A	18,867	18,817	19,251
6. Total No. of Mares Reported at Stud in Great Britain and Ireland	25,554	26,204	31,805	30,764	30,577
7. No. of Live Thoroughbred Foals in Great Britain - Colts	2,609	2,708	2,753	2,878	2,667
8. No. of Live Thoroughbred Foals in Great Britain - Fillies	2,545	2,721	2,762	2,848	2,819
9. No. of Live Thoroughbred Foals in Great Britain - TOTAL	5,154	5,429	5,515	5,726	5,486
10. No. of Live Thoroughbred Foals in Ireland - Colts	5,228	5,409	5,613	5,868	5,933
11. No. of Live Thoroughbred Foals in Ireland - Fillies	4,986	5,165	5,381	5,882	6,071
12. No. of Live Thoroughbred Foals in Ireland - TOTAL	10,214	10,574	10,994	11,750	12,004
13. Total No. of Live Thoroughbred Foals in Great Britain and Ireland	15,368	16,003	16,509	17,476	17,490
14. No. of Names Registered Under the Rules of Racing - Thoroughbred	12,736	13,608	14,343	13,994	14,997
15. No. of Names Registered Under the Rules of Racing - Non-Thoroughbred	725	658	771	678	538
16. No. of Names Registered Under the Rules of Racing - TOTAL	13,461	14,266	15,114	14,672	15,535
17. No. of Horses Exported from Great Britain and Ireland	4,159	2,900	3,330	3,445	3,439

## Analysis of Exported Horses

2006

Country	Mares	Fillies, 4 yrs and Under	Colts, 4 yrs and Under	Geldings	Horses	Total
1. FRANCE	48	424	323	41	4	<b>840</b>
2. ITALY	38	261	233	11	5	<b>548</b>
3. USA	64	169	106	27	15	<b>381</b>
4. UNITED ARAB EMIRATES	7	54	173	47	19	<b>300</b>
5. SPAIN	3	81	78	21	0	<b>183</b>
6. GERMANY	15	81	66	18	2	<b>182</b>
7. JAPAN	34	39	68	1	3	<b>145</b>
8. AUSTRALIA	37	83	4	2	5	<b>131</b>
9. GREECE	2	47	58	13	0	<b>120</b>
10. SWEDEN	4	31	35	29	0	<b>99</b>
11. KINGDOM OF SAUDI ARABIA	12	24	19	11	0	<b>66</b>
12. SOUTH AFRICA	24	23	12	1	1	<b>61</b>
13. HONG KONG	0	0	37	20	0	<b>57</b>
14. INDIA	28	3	1	0	1	<b>33</b>
15. QATAR	2	17	8	5	0	<b>32</b>
OTHERS	38	89	80	47	7	261
<b>GRAND TOTAL</b>						<b>3,439</b>

# **SECTION B**

## **OWNERSHIP**

### **TABLE 1**

#### **New Registrations**

##### **Line 1 Registered Owners**

The total number of Owners becoming registered during the year.

##### **Line 2 Colours**

The number of new Colours registered during the year.

##### **Line 3 Joint Ownerships**

The number of new Joint Ownerships registered during the year.

##### **Line 4 Joint Ownership Names**

The number of new Joint Ownership Names registered during the year.

##### **Line 5 Racing Partnerships**

The number of new Racing Partnerships registered during the year.

##### **Line 6 Leases**

The number of new Leases registered during the year.

##### **Line 7 Registered Companies**

The number of new Companies registered for the purpose of owning horses during the year.

##### **Line 8 Recognised Business Partnerships**

The number of new Business Partnerships registered for the purpose of owning horses during the year.

## **Registrations Current at Year End**

### **Line 1 Registered Owners**

The total number of Registered Owners on file as at the year end. Owners are normally kept on file until they have not had a horse in training for 24 consecutive months.

### **Line 2 Colours**

The total number of Colours on file as at the year end.

### **Line 3 Joint Ownerships**

The total number of Joint Ownerships held on file as at the year end.

### **Line 4 Joint Ownership Names**

The total number of Joint Ownership Names held on file as at the year end.

### **Line 5 Racing Partnerships**

The total number of Racing Partnerships held on file as at the year end.

### **Line 6 Leases**

The total number of Leases in operation as at the year end.

### **Line 7 Registered Companies**

The total number of Company Registrations in operation as at the year end.

### **Line 8 Recognised Business Partnerships**

The total number of Business Partnerships in operation as at the year end.

## **TABLE 2**

### **Number of Owners Showing their Numbers of Horses in Training**

The number of Owners categorised by the number of horses in training that they own. **With horses owned jointly, all the partners or lessees are counted and their shares are each counted as one horse.**

The figures shown in the table for each year are an average of the 12 monthly figures produced. As the figures are rounded to the nearest whole number, the total may not equal the sum of the individual parts.

### **TABLE 3**

#### **Numbers of Owners With Horses in Training by Type of Ownership**

The numbers of owners with horses in training, categorised by type of ownership. The Inclusive Figures allow for duplication of a single owner in more than one of the categories, depending on the types of ownership involvement, and therefore show the total number of different owners involved in each category. The Exclusive Figures show a more precise breakdown of ownership types by which each owner with horses in training is categorised in only one of the categories. The sum of these categories is, therefore, equal to the number of different owners with horses in training as categorised in Table B2.

The figures shown in the table for each year are an average of the 12 monthly figures produced. As the figures are rounded to the nearest whole number, the total may not equal the sum of the individual parts.

## Registrations

### New Registrations

	2002	2003	2004	2005	2006
Registered Owners	2,222	2,272	2,311	2,282	2,169
Colours	2,710	2,921	3,014	2,944	3,049
Joint Ownerships	2,575	2,724	2,892	2,820	2,800
Joint Ownership Names	603	644	747	836	960
Racing Partnerships	504	527	578	583	486
Leases	318	287	268	363	316
Registered Companies	93	83	92	78	89
Recognised Business Partnerships	5	2	3	1	2

### Registrations Current At Year End

	2002	2003	2004	2005	2006
Registered Owners	17,403	17,712	18,143	17,600	17,816
Colours	17,433	18,077	18,630	19,121	19,660
Joint Ownerships	3,773	4,037	3,998	4,414	4,447
Joint Ownership Names	2,345	2,531	2,779	2,955	3,259
Racing Partnerships	2,282	2,524	2,805	2,913	2,457
Leases	316	295	255	289	271
Registered Companies	753	734	748	685	671
Recognised Business Partnerships	71	72	75	73	42

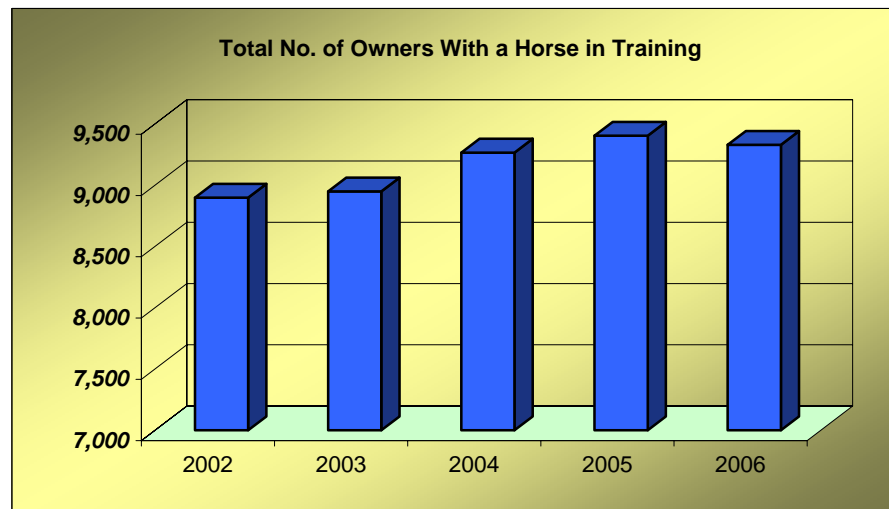
## Ownership Statistics

### Number of Owners With a Horse in Training by the Number of Horses They Own

	2002	2003	2004	2005	2006
No. of Owners with - 1 Horse in Training	5,437	5,423	5,484	5,568	5,523
2 Horses in Training	1,664	1,724	1,825	1,841	1,771
3 Horses in Training	709	707	770	774	792
4 Horses in Training	356	363	401	386	397
5 Horses in Training	217	207	221	224	228
6-10 Horses in Training	359	360	389	414	418
11-20 Horses in Training	116	124	123	133	141
21+ Horses in Training	40	40	53	63	60
<b>Total No. of Owners With a Horse in Training</b>	<b>8,898</b>	<b>8,949</b>	<b>9,266</b>	<b>9,403</b>	<b>9,329</b>

**Notes**

With horses owned jointly, all the partners or lessees are counted and their shares are each counted as one horse.





## Ownership Statistics

### Number of Owners With a Horse in Training by Type of Ownership

	2002	2003	2004	2005	2006
<b>INCLUSIVE FIGURES</b>					
No. of Sole Owners (excluding Company)	3,440	3,366	3,450	3,524	3,454
No. of Company Sole Owners	380	352	358	344	341
No. of Business Partnerships	23	28	33	33	33
No. of Joint Ownership Owners	4,569	4,510	4,719	4,742	4,758
No. of Racing Partnership Owners	2,082	2,243	2,394	2,451	2,387
<b>EXCLUSIVE FIGURES</b>					
No. of Sole Owners (excluding Company)	2,575	2,533	2,551	2,632	2,586
No. of Company Sole Owners	311	289	291	281	275
No. of Business Partnership Sole Owners	18	23	26	26	26
No. of Sole Owners and Joint Ownership Owners	865	834	899	892	868
No. of Company Owners and Joint Ownership Owners	69	63	68	63	65
No. of Business Partners and Joint Ownership Owners	5	5	7	8	7
No. of Joint Ownership Owners only (including Companies)	5,056	5,203	5,424	5,502	5,502
<b>TOTAL</b>	<b>8,898</b>	<b>8,949</b>	<b>9,266</b>	<b>9,403</b>	<b>9,329</b>

## SECTION C

### TRAINING AND RIDING

TABLE 1

#### Licences and Permits to Train and Ride

**Line 1**

**Trainers Combined Licences**

The number of Licences issued by the Licensing Committee, to train horses for both Flat and Jump races, during the year.

**Line 2**

**Trainers Flat Only Licences**

The number of Licences to train horses, for Flat races only, issued during the year.

**Line 3**

**Trainers Jump Only Licences**

The number of Licences to train horses, for Jump races only, issued during the year.

**Line 4**

**Permits to Train**

The number of Permits issued for the training of horses (Jump races only) during the season specified.

**Line 5**

**Flat Jockeys Licences**

The number of Professional Jockey Licences issued by the Licensing Committee to Flat Jockeys during the year.

**Line 6**

**Jump and Conditional Jockey Licences**

The number of Professional Jockey Licences issued by the Licensing Committee to Jump and Conditional Jockeys during the season specified.

**Line 7**

**Apprentice Jockey Licences**

The number of Apprentice Jockey Licences issued by the Licensing Committee during the year.

**Line 8**  
**Amateur Riders Permits**

The number of Permits issued to Amateur Riders by the Licensing Committee during the season specified.

Category A permits entitle the holder to ride in all Amateur Flat Races and Steeple Chases and Hurdle Races confined to Amateur Riders.

Category B permits also allow the holder to ride in Steeple Chases and Hurdle Races open to Professional Jockeys.

**TABLE 2**

**Horses in Training by Type and Age of Horse**

An analysis of the number of horses in training taken from Trainers Returns and broken down into: Flat-Only horses, Jump-Only horses, Dual-Purpose horses and Hunters' Steeple Chasers. Within each of these sub-sections, the horse population is broken down by age group.

The figures shown in the table for each year are an average of the 12 monthly figures produced. As the figures are rounded to the nearest whole number, the total may not equal the sum of the individual parts.

For Hunter Chasers, only a total figure is shown. This is the highest number recorded during the year, typically the figure for May or June.

**TABLE 3**

**Horses in Training by Type of Ownership**

An analysis of the number of horses in training taken from Trainers Returns giving a breakdown of the number of horses in training by ownership type and an analysis of the horses owned jointly.

The figures shown in the table for each year are an average of the 12 monthly figures produced. As the figures are rounded to the nearest whole number, the total may not equal the sum of the individual parts.

**TABLE 4**

**Horses in Training – Size of Trainers' Yards**

An analysis of the number of horses in training taken from Trainers Returns and broken down by type of trainer and number of horses in each yard by horse type, except for Permit Holders and Hunter Trainers, where the breakdown by horse type is not shown.

The figures shown in the table for each year are an average of the 12 monthly figures produced, except for Hunter Trainers, where an average of the monthly figures for February to June is shown. As the figures are rounded to the nearest whole number, the total may not equal the sum of the individual parts.

## Training and Riding

### Licences and Permits to Train and Ride

	2001/2002 Jump Season	2002/2003 Jump Season	2003/2004 Jump Season	2004/2005 Jump Season	2005/2006 Jump Season
	2002 Flat Season	2003 Flat Season	2004 Flat Season	2005 Flat Season	2006 Flat Season
<b>TRAINERS</b>					
Combined Licences	475	479	498	511	503
Flat Only Licences	43	45	50	48	48
Jump Only Licences	68	73	71	61	61
Permits to Train	216	191	189	183	198
<b>RIDERS</b>					
Flat Professional Licences	115	124	119	121	125
Jump Professional Licences	Jump	87	84	97	105
	Conditional	188	139	188	163
Flat Apprentice Licences	238	232	230	222	219
Amateur Riders' Permits (July 1st - June 30th)	Category A	432	412	434	374
	Category B	279	276	273	247

## Horses in Training

### Flat-Only Horses

	2002	2003	2004	2005	2006
2-y-o	2,885	2,974	3,274	3,250	3,085
3-y-o	2,402	2,409	2,571	2,699	2,668
4-y-o	1,067	1,092	1,094	1,158	1,157
5-y-o+	1,121	1,208	1,285	1,354	1,378
<b>TOTAL</b>	<b>7,475</b>	<b>7,683</b>	<b>8,225</b>	<b>8,461</b>	<b>8,288</b>

### Dual-Purpose Horses

	2002	2003	2004	2005	2006
3-y-o	67	75	94	104	123
4-y-o	244	321	336	399	421
5-y-o+	937	936	1,075	1,227	1,309
<b>TOTAL</b>	<b>1,248</b>	<b>1,333</b>	<b>1,505</b>	<b>1,730</b>	<b>1,854</b>

### Jump-Only Horses

	2002	2003	2004	2005	2006
3-y-o	71	79	88	102	92
4-y-o	460	475	529	539	558
5-y-o+	3,730	3,517	3,566	3,556	3,503
<b>TOTAL</b>	<b>4,261</b>	<b>4,072</b>	<b>4,184</b>	<b>4,197</b>	<b>4,153</b>

### Hunter Chasers\*

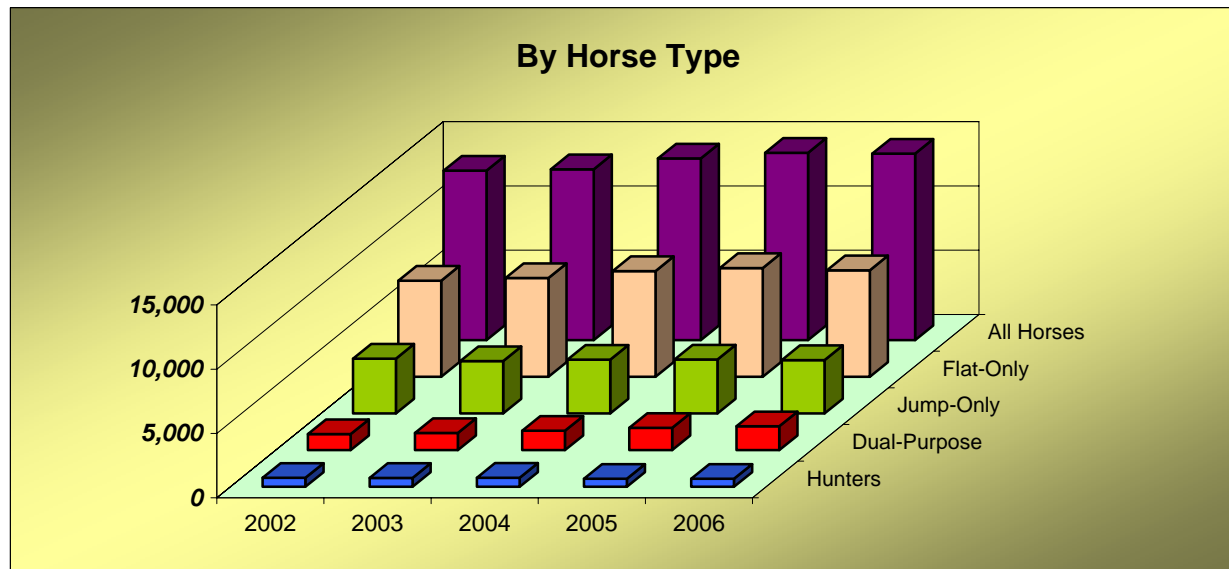
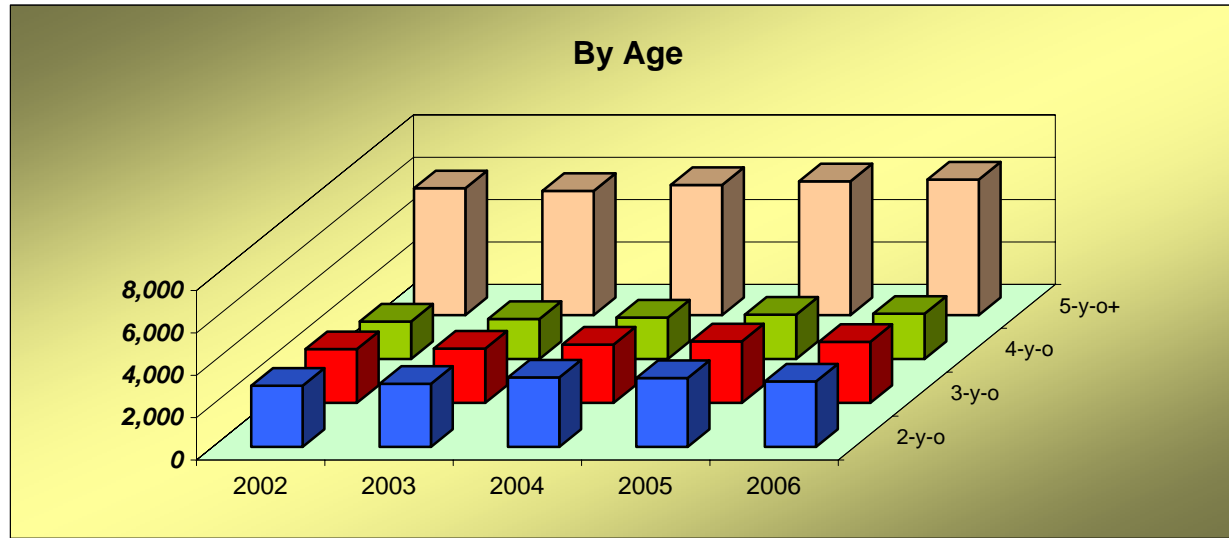
	2002	2003	2004	2005	2006
<b>TOTAL</b>	<b>699</b>	<b>690</b>	<b>703</b>	<b>621</b>	<b>622</b>

### All Horses

	2002	2003	2004	2005	2006
2-y-o	2,885	2,974	3,274	3,250	3,085
3-y-o	2,540	2,564	2,753	2,904	2,882
4-y-o	1,771	1,889	1,959	2,096	2,136
5-y-o+	5,987	5,865	6,143	6,318	6,398
<b>TOTAL</b>	<b>13,183</b>	<b>13,292</b>	<b>14,129</b>	<b>14,568</b>	<b>14,501</b>

\* The figure for Hunter Chasers is the highest point reached during the year, typically in May or June, whereas all other figures are an average of the 12 monthly figures for each year.

## Horses in Training



## Horses in Training by Type of Ownership

	2002	2003	2004	2005	2006
No. of Horses Owned by a Sole Individual	7,898	7,905	8,246	8,430	8,271
No. of Horses Owned by a Sole Company	1,136	1,065	1,191	1,231	1,177
No. of Horses Owned by a Sole Business Partnership	53	74	77	87	87
No. of Horses Owned by a Joint Ownership	2,678	2,698	2,936	2,958	3,017
No. of Horses Owned by a Racing Partnership	1,590	1,738	1,942	2,142	2,198
<b>TOTAL</b>	<b>13,355</b>	<b>13,479</b>	<b>14,392</b>	<b>14,848</b>	<b>14,751</b>
No. of Horses Owned Jointly by a Party of 2	2,984	3,138	3,512	3,749	3,857
No. of Horses Owned Jointly by a Party of 3	792	809	858	852	874
No. of Horses Owned Jointly by a Party of 4	318	327	343	329	302
No. of Horses Owned Jointly by a Party of 5+	173	161	165	171	183
<b>TOTAL NO. OF HORSES OWNED JOINTLY</b>	<b>4,267</b>	<b>4,435</b>	<b>4,878</b>	<b>5,100</b>	<b>5,216</b>

**Notes**

The figure for the Total Number of Horses in Training shown in this table will overstate the figure shown in Table C2 due to the fact that the above figures also include Yearlings. Horses owned jointly includes horses owned by Joint Ownerships and Racing Partnerships.

## Horses in Training - Size of Trainers' Yards

### Licensed Trainers

		2002	2003	2004	2005	2006
No. of Yards With	1-10 Flat-Only Horses	244	237	246	247	245
	11-15 Flat-Only Horses	46	53	49	48	46
	16-20 Flat-Only Horses	25	29	27	30	30
	21-30 Flat-Only Horses	32	36	41	38	33
	31-40 Flat-Only Horses	17	14	16	23	22
	41+ Flat-Only Horses	52	52	56	57	58
No. of Yards With	1-10 Jump-Only Horses	293	298	295	295	294
	11-15 Jump-Only Horses	33	38	32	31	33
	16-20 Jump-Only Horses	18	13	21	18	18
	21-30 Jump-Only Horses	15	16	17	18	14
	31-40 Jump-Only Horses	6	6	5	8	8
	41+ Jump-Only Horses	15	14	15	14	15
No. of Yards With	1-10 Dual-Purpose Horses	317	322	324	335	342
	11-15 Dual-Purpose Horses	10	9	12	15	20
	16-20 Dual-Purpose Horses	3	5	5	7	8
	21-30 Dual-Purpose Horses	2	3	5	5	5
	31-40 Dual-Purpose Horses	0	1	2	3	3
	41+ Dual-Purpose Horses	0	0	1	1	1
No. of Yards With	1-10 Horses In Total	196	199	212	210	217
	11-15 Horses In Total	98	103	100	96	99
	16-20 Horses In Total	64	66	62	62	57
	21-30 Horses In Total	66	67	69	70	74
	31-40 Horses In Total	36	35	35	42	37
	41+ Horses In Total	77	78	87	90	92
<b>TOTAL YARDS WITH A HORSE IN TRAINING</b>		<b>536</b>	<b>547</b>	<b>564</b>	<b>569</b>	<b>576</b>



## Horses in Training - Size of Trainers' Yards

### Permit Holders and Hunter Trainers

#### Permit Holders

	2002	2003	2004	2005	2006
No. of Yards With 1-10 Horses In Total	173	154	153	153	151
11+ Horses In Total	4	4	4	7	7
<b>TOTAL YARDS WITH A HORSE IN TRAINING</b>	<b>177</b>	<b>158</b>	<b>157</b>	<b>160</b>	<b>157</b>

#### Hunter Trainers

	2002	2003	2004	2005	2006
No. of Yards With 1-10 Horses In Total	309	311	322	298	283
11+ Horses In Total	0	0	0	0	0
<b>TOTAL YARDS WITH A HORSE IN TRAINING</b>	<b>309</b>	<b>312</b>	<b>322</b>	<b>298</b>	<b>283</b>

#### Notes

The figure for Hunter Trainers is an average of the figures for February to June, whereas for Permit Holders it is an average of figures for January to December.

## Horses in Training - Size of Trainers' Yards

### All Trainers

		2002	2003	2004	2005	2006
No. of Yards With	1-10 Flat-Only Horses	247	243	252	256	250
	11-15 Flat-Only Horses	46	53	49	48	46
	16-20 Flat-Only Horses	25	29	27	30	30
	21-30 Flat-Only Horses	32	36	41	38	33
	31-40 Flat-Only Horses	17	14	16	23	22
	41+ Flat-Only Horses	52	52	56	57	58
No. of Yards With	1-10 Jump-Only Horses	601	587	592	613	582
	11-15 Jump-Only Horses	35	40	35	36	38
	16-20 Jump-Only Horses	20	14	21	18	20
	21-30 Jump-Only Horses	16	16	17	18	14
	31-40 Jump-Only Horses	7	6	5	8	8
	41+ Jump-Only Horses	15	14	15	14	15
No. of Yards With	1-10 Dual-Purpose Horses	317	322	324	336	343
	11-15 Dual-Purpose Horses	10	9	12	15	20
	16-20 Dual-Purpose Horses	3	5	5	7	8
	21-30 Dual-Purpose Horses	2	3	5	5	5
	31-40 Dual-Purpose Horses	0	1	2	3	3
	41+ Dual-Purpose Horses	0	0	1	1	1
No. of Yards With	1-10 Horses In Total	504	488	509	527	506
	11-15 Horses In Total	100	107	103	102	105
	16-20 Horses In Total	65	66	62	63	59
	21-30 Horses In Total	67	67	69	70	74
	31-40 Horses In Total	36	35	35	43	37
	41+ Horses In Total	77	78	87	90	92
<b>TOTAL YARDS WITH A HORSE IN TRAINING</b>		<b>848</b>	<b>840</b>	<b>866</b>	<b>894</b>	<b>872</b>

## SECTION D

### FIXTURES, RACES AND PRIZE MONEY

#### TABLE 1

##### Fixtures

A fixture is defined as one day's racing at one course.

#### TABLE 2

##### Field Sizes - Flat

The number of Runners (1-5, 6-10, 11-15, 16-20 and 21+) in the number of races shown monthly for Flat races. The number of Walkovers (if any) is shown separately.

#### TABLE 3

##### Field Sizes - Jump

The number of Runners (1-5, 6-10, 11-15, 16-20 and 21+) in the number of races shown monthly for Hurdle Races and National Hunt Flat Races, and for Steeple Chases. The number of Walkovers (if any) is shown separately.

#### TABLE 4

##### Field Sizes – Flat and Jump

The number of Runners (1-5, 6-10, 11-15, 16-20 and 21+) in the number of races shown as a total for each of the last 5 years for Flat races and Jump races. A separate table for Hurdle Races and National Hunt Flat Races and for Steeple Chases is also shown. The number of Walkovers (if any) is shown separately.

#### TABLE 5

##### Flat Racing

##### Number of Different Horses Which Ran – by Age

An analysis of the number of different horses which ran on the Flat under Rules in each calendar year as 2 years old, 3 years old, 4 years old and over and in total.

##### Average Number of Runs per Horse that Ran

The number of individual different horses that ran on the Flat divided into the total number of Flat runners for each year.

**Number of Different Winners**

The number of different horses which won a Flat race under Rules in the calendar year.

**Number of Races Divided Overnight**

The number of different Flat races that were divided under the Orders and Rules of Racing because the number of horses declared to run exceeded the safety factor/maximum figure or field size limit of the race concerned or, in exceptional circumstances, to provide a sufficient number of races on the day due to other races on the card being abandoned.

**Number of Horses Balloted Out or Eliminated**

The number of horses taken out of a Flat race under the Orders and Rules of Racing because the number left in at the declaration to run stage exceeded the safety factor/maximum figure or field size limit. These figures are for ALL Flat races, including abandoned races, so will not necessarily equate to the total number of eliminations in table D6, which is only for races that actually took place.

**Jump Racing****Number of Different Horses Which Ran**

The total number of different horses which ran under Jump Rules in each calendar year.

**Average Number of Runs per Horse that Ran**

The number of individual different horses that ran under Jump Rules divided into the total number of Jump runners for each calendar year.

**Number of Different Winners**

The number of different horses that won a Jump race under Rules in the calendar year.

**Number of Races Divided Overnight**

The number of different Jump races that were divided under the Orders and Rules of Racing because the number of horses declared to run exceeded the safety factor/maximum figure or field size limit of the race concerned or, in exceptional circumstances, to provide a sufficient number of races on the day due to other races on the card being abandoned.

**Number of Horses Balloted Out or Eliminated**

The number of horses taken out of a Jump race under the Orders and Rules of Racing because the number left in at the declaration to run stage exceeded the safety factor/maximum figure or field size limit. These figures are for ALL Jump races, including abandoned races, so will not necessarily equate to the total number of eliminations in tables D7, D8 and D9, which are only for races that actually took place.

**TABLE 6****Races, Entries, Runners, Eliminations and Prize Money by Type of Race – Flat**

An analysis of the number of Entries, Runners and Eliminations by types of Handicaps and types of Weight-for-Age races, together with Prize Money value and percentage of total Flat Prize Money for each type.

## **TABLE 7**

### **Races, Entries, Runners, Eliminations and Prize Money by Type of Race – Jump**

An analysis of the number of Entries, Runners and Eliminations by types of Handicaps and types of Weight-for-Age races, together with Prize Money value and percentage of total Jump Prize Money for each type.

## **TABLE 8**

### **Races, Entries, Runners, Eliminations and Prize Money by Distance of Race – Hurdle Races and National Hunt Flat Races**

An analysis of the number of Entries, Runners and Eliminations by Distance of Race in Handicaps and Weight-for-Age races for Hurdle Races and National Hunt Flat Races. Averages per race, together with Prize Money value and percentage of total Prize Money for Hurdle Races and National Hunt Flat Races for each Distance category are shown.

## **TABLE 9**

### **Races, Entries, Runners, Eliminations and Prize Money by Distance of Race – Steeple Chases**

An analysis of the number of Entries, Runners and Eliminations by Distance of Race in Handicaps and Weight-for-Age races for Steeple Chases. Averages per race, together with Prize Money value and percentage of total Prize Money for Steeple Chases for each Distance category are shown.

## **TABLE 10**

### **Prize Money by Source for Pattern Races – Flat Racing**

An analysis by Course of the source of Prize Money for Flat Pattern Races.

## **TABLE 11**

### **Prize Money by Source**

An analysis of the total Prize Money for the last 5 years, broken down by source.

## **TABLE 12**

### **Comparison of Flat and Jump Prize Money Pools**

An analysis of Flat Prize Money, Jump Prize Money and Total Prize Money by source.

## **TABLE 13**

### **Total Prize Money by Racecourse**

A comparison of the number of Fixtures and Prize Money by source for each Racecourse. A separate table is shown for Flat Racing, Jump Racing and All Racing.

## **TABLE 14**

### **Sponsored Number Cloth Income**

A breakdown by Racecourse (Flat, Jump and Total) of the income derived from the sponsoring of number cloths.

## **TABLE 15**

### **Prize Money Won Abroad by Horses Trained in Great Britain**

Win and Place Prize Money won abroad (i.e. not England, Scotland or Wales) by horses trained in Great Britain at the time of running.

### **Prize Money Won in Great Britain by Horses Trained outside of Great Britain**

Win and Place Prize Money won in Great Britain by horses showing a foreign Trainer in the Official Return sent in by the Clerk of the Scales from the Racecourse. The amount taken will be the Penalty Value shown.

## **TABLE 16**

### **Appearance Money**

The amount paid in Appearance Money payments for the last 5 years, under the terms of Order 232 and Instruction J11 of the Orders and Rules of Racing. A breakdown is shown of money paid in respect of Sunday Racing and that paid for races run on other days of the week.

### **Owners' Premiums**

The amount paid in Owners' Premiums for British Bred Horses in accordance with Order 197 and Instruction J20 of the Orders and Rules of Racing. The Owners' Premium Scheme ran from January 1st, 2004 until December 31st, 2006.

## Prize Money and Race Statistics

### Fixtures

	2002	2003	2004	2005	2006
<b>Flat</b>					
Fixtures Programmed	(a) 691	(f,g) 726	(j) 802	(n) 811	(p) 842
Fixtures That Took Place	(b) 681	(h) 720	(k) 792	(o) 801	(q,r) 832
Fixtures Abandoned	11	6	18	11	10
<b>Jump</b>					
Fixtures Programmed	(c) 537	(i) 559	536	535	546
Fixtures That Took Place	(d,e) 474	497	(l) 504	496	(s,t) 506
Fixtures Abandoned	64	62	35	39	41
<b>Mixed</b>					
Fixtures Programmed	5	3	3	3	3
Fixtures That Took Place	(d,b) 3	3	3	3	(t) 4
Fixtures Abandoned	0	0	0	0	0
<b>All Racing</b>					
Fixtures Programmed	1,233	1,288	1,341	1,349	1,391
Fixtures That Took Place	1,158	1,220	(k,l) 1,299	(o) 1,300	(q,r,s,t) 1,342
Fixtures Abandoned	75	68	53	50	51
<b>(Of Which Evening)</b>					
Fixtures Programmed	163	197	(m) 223	221	229
Fixtures That Took Place	161	194	227	217	226
Fixtures Abandoned	2	3	2	4	3

#### Notes

- (a) 155 All Weather Track fixtures
- (b) 1 Mixed fixture transferred to Flat
- (c) 10 Replacement Jump fixtures  
plus 10 Additional Jump Replacement fixtures
- (d) 1 Mixed fixture transferred to Jump
- (e) 1 fixture abandoned then re-programmed
- (f) 153 All Weather Track fixtures
- (g) 3 Additional fixtures
- (h) 1 AWT fixture transferred to turf and  
3 turf fixtures transferred to AWT
- (i) 8 Replacement fixtures plus 12 Additional  
Replacement fixtures
- (j) 213 All Weather Track fixtures
- (k) 8 Additional Flat fixtures
- (l) 3 Additional Jump fixtures
- (m) 6 Additional Evening fixtures
- (n) 216 All Weather Track fixtures programmed
- (o) 1 Additional AWT Flat fixture
- (p) 297 All Weather Track fixtures
- (q) 2 Additional Flat fixtures
- (r) 2 AWT fixtures cancelled
- (s) 1 additional Jump fixture
- (t) 1 Jump fixture abandoned and replaced by  
an additional AWT (Mixed) fixture

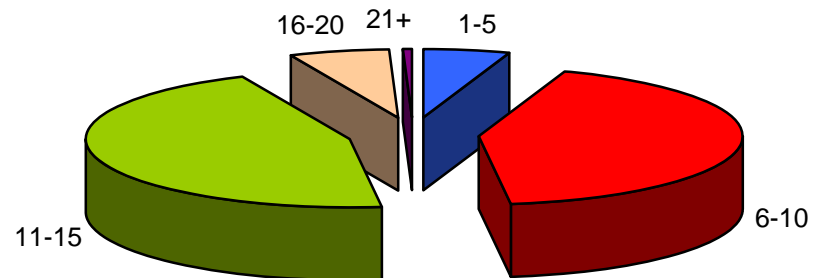
## Numbers of Runners in Races

### Flat Racing

2006

Runners	Number of Races												Total	% of All Races
	Jan	Feb	Mar	Apr	May	Jun	Jul	Aug	Sep	Oct	Nov	Dec		
1-5	2	2	9	12	40	34	75	47	19	7	18	30	<b>295</b>	<b>5.3%</b>
6-10	72	101	98	152	285	327	404	371	185	87	107	178	<b>2,367</b>	<b>42.6%</b>
11-15	171	133	124	195	265	283	234	278	275	253	186	121	<b>2,518</b>	<b>45.3%</b>
16-20	1	1	1	41	49	63	40	48	59	40	5	0	<b>348</b>	<b>6.3%</b>
21+	0	0	2	1	2	7	2	2	8	2	0	0	<b>26</b>	<b>0.5%</b>
<b>TOTAL</b>	<b>246</b>	<b>237</b>	<b>234</b>	<b>401</b>	<b>641</b>	<b>714</b>	<b>755</b>	<b>746</b>	<b>546</b>	<b>389</b>	<b>316</b>	<b>329</b>	<b>5,554</b>	<b>100.0%</b>

**Notes**  
No Walkovers





## Numbers of Runners in Races

### Jump Racing

**2006**

#### Hurdle Races and National Hunt Flat Races

Runners	Number of Races												Total	% of All Races
	Jan	Feb	Mar	Apr	May	Jun	Jul	Aug	Sep	Oct	Nov	Dec		
1-5	5	6	2	6	10	2	7	9	4	7	9	3	<b>70</b>	<b>3.5%</b>
6-10	68	61	63	47	81	37	38	60	40	69	120	75	<b>759</b>	<b>37.8%</b>
11-15	110	90	73	89	79	71	41	31	33	87	92	98	<b>894</b>	<b>44.6%</b>
16-20	27	27	32	34	13	8	5	3	7	20	44	46	<b>266</b>	<b>13.3%</b>
21+	2	0	6	5	1	0	0	0	0	0	1	2	<b>17</b>	<b>0.8%</b>
<b>TOTAL</b>	<b>212</b>	<b>184</b>	<b>176</b>	<b>181</b>	<b>184</b>	<b>118</b>	<b>91</b>	<b>103</b>	<b>84</b>	<b>183</b>	<b>266</b>	<b>224</b>	<b>2,006</b>	<b>100.0%</b>

#### Steeple Chases

Runners	Number of Races												Total	% of All Races
	Jan	Feb	Mar	Apr	May	Jun	Jul	Aug	Sep	Oct	Nov	Dec		
1-5	13	15	20	11	16	3	5	11	2	14	52	32	<b>194</b>	<b>14.1%</b>
6-10	80	81	69	77	81	29	34	36	31	78	108	102	<b>806</b>	<b>58.7%</b>
11-15	40	39	29	44	37	31	12	6	4	21	26	34	<b>323</b>	<b>23.5%</b>
16-20	3	2	7	9	4	2	1	0	1	2	4	4	<b>39</b>	<b>2.8%</b>
21+	0	0	7	4	0	0	0	0	0	0	1	0	<b>12</b>	<b>0.9%</b>
<b>TOTAL</b>	<b>136</b>	<b>137</b>	<b>132</b>	<b>145</b>	<b>138</b>	<b>65</b>	<b>52</b>	<b>53</b>	<b>38</b>	<b>115</b>	<b>191</b>	<b>172</b>	<b>1,374</b>	<b>100.0%</b>

**Notes**

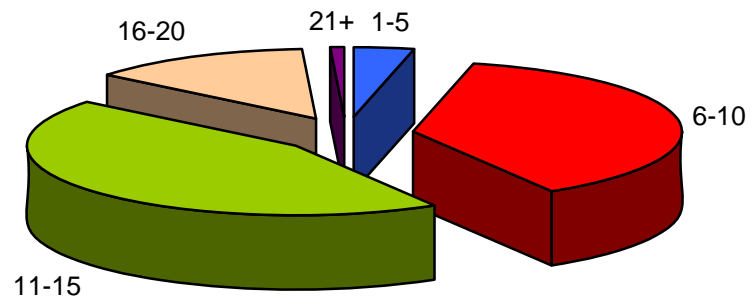
No walkovers

# Numbers of Runners in Races

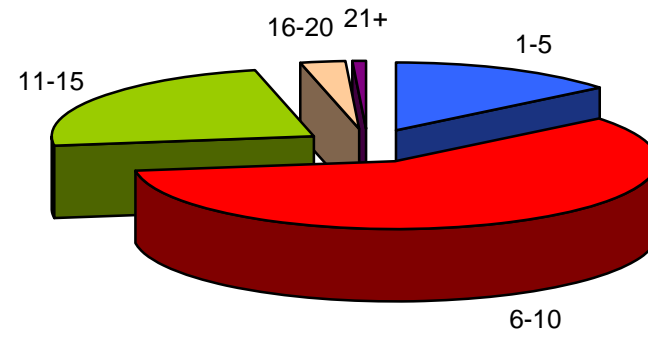
## Jump Racing

2006

### Hurdle Races and National Hunt Flat Races



### Steeple Chases



## Analysis of Racing by Size of Field

### Flat Races

Runners	2002		2003		2004		2005		2006	
	Number of Races	% of All Races	Number of Races	% of All Races	Number of Races	% of All Races	Number of Races	% of All Races	Number of Races	% of All Races
1-5	321	7.0%	383	8.0%	257	4.9%	193	3.6%	295	5.3%
6-10	1,647	36.0%	1,872	39.3%	2,096	40.0%	2,014	38.0%	2,367	42.6%
11-15	1,737	38.0%	1,744	36.6%	2,226	42.5%	2,451	46.2%	2,518	45.3%
16-20	743	16.3%	711	14.9%	615	11.7%	611	11.5%	348	6.3%
21+	124	2.7%	51	1.1%	47	0.9%	32	0.6%	26	0.5%
<b>TOTAL</b>	<b>4,572</b>	<b>100.0%</b>	<b>4,761</b>	<b>100.0%</b>	<b>5,241</b>	<b>100.0%</b>	<b>5,301</b>	<b>100.0%</b>	<b>5,554</b>	<b>100.0%</b>

### Jump Races

Runners	2002		2003		2004		2005		2006	
	Number of Races	% of All Races	Number of Races	% of All Races	Number of Races	% of All Races	Number of Races	% of All Races	Number of Races	% of All Races
1-5	427 <sup>(1)</sup>	13.7%	650 <sup>(4)</sup>	19.9%	359 <sup>(1)</sup>	10.8%	245	7.5%	264	7.8%
6-10	1,501	48.1%	1,527	46.7%	1,584	47.5%	1,560	47.5%	1,565	46.3%
11-15	858	27.5%	801	24.5%	1,031	30.9%	1,113	33.9%	1,217	36.0%
16-20	287	9.2%	256	7.8%	314	9.4%	336	10.2%	305	9.0%
21+	46	1.5%	33	1.0%	48	1.4%	33	1.0%	29	0.9%
<b>TOTAL</b>	<b>3,119</b>	<b>100.0%</b>	<b>3,267</b>	<b>100.0%</b>	<b>3,336</b>	<b>100.0%</b>	<b>3,287</b>	<b>100.0%</b>	<b>3,380</b>	<b>100.0%</b>

#### Notes

The number of walkovers is shown in brackets.

## Analysis of Racing by Size of Field

### Hurdle Races and National Hunt Flat Races

Runners	2002		2003		2004		2005		2006	
	Number of Races	% of All Races	Number of Races	% of All Races	Number of Races	% of All Races	Number of Races	% of All Races	Number of Races	% of All Races
1-5	131	7.3%	201	10.6%	73	3.8%	57	2.9%	70	3.5%
6-10	734	41.0%	827	43.8%	753	39.1%	724	37.3%	759	37.8%
11-15	638	35.7%	616	32.6%	780	40.5%	849	43.7%	894	44.6%
16-20	249	13.9%	222	11.7%	280	14.5%	287	14.8%	266	13.3%
21+	37	2.1%	24	1.3%	40	2.1%	25	1.3%	17	0.8%
<b>TOTAL</b>	<b>1,789</b>	<b>100.0%</b>	<b>1,890</b>	<b>100.0%</b>	<b>1,926</b>	<b>100.0%</b>	<b>1,942</b>	<b>100.0%</b>	<b>2,006</b>	<b>100.0%</b>

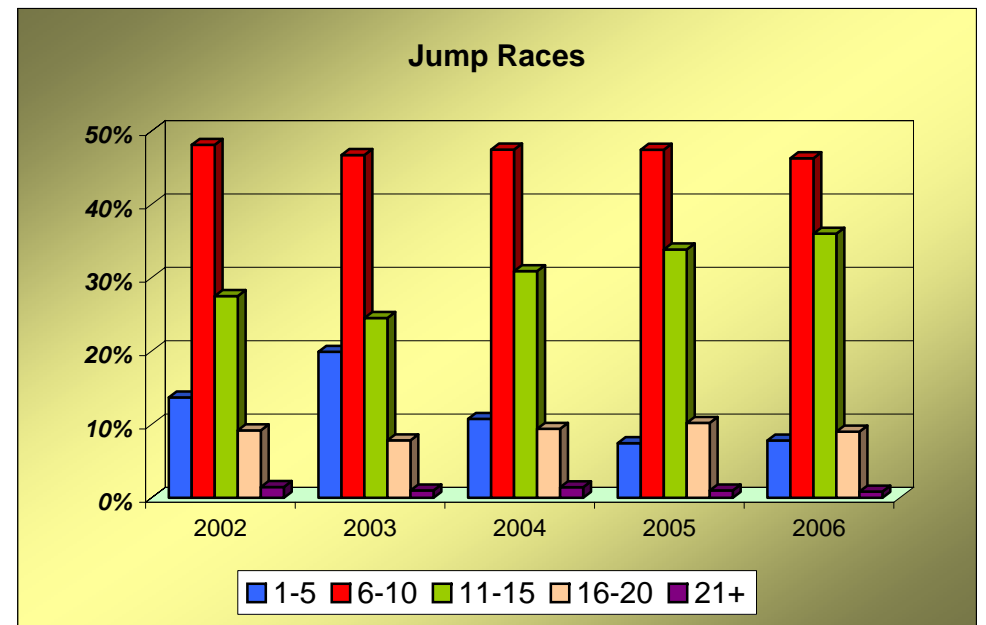
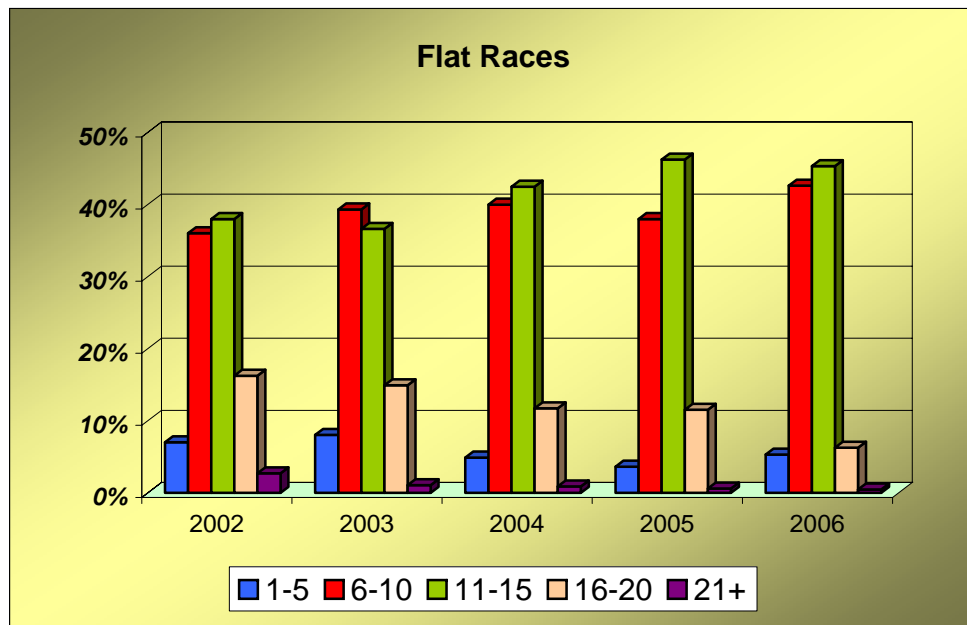
### Steeple Chases

Runners	2002		2003		2004		2005		2006	
	Number of Races	% of All Races	Number of Races	% of All Races	Number of Races	% of All Races	Number of Races	% of All Races	Number of Races	% of All Races
1-5	296 <sup>(1)</sup>	22.3%	449 <sup>(4)</sup>	32.6%	286 <sup>(1)</sup>	20.3%	188	14.0%	194	14.1%
6-10	767	57.7%	700	50.8%	831	58.9%	836	62.2%	806	58.7%
11-15	220	16.5%	185	13.4%	251	17.8%	264	19.6%	323	23.5%
16-20	38	2.9%	34	2.5%	34	2.4%	49	3.6%	39	2.8%
21+	9	0.7%	9	0.7%	8	0.6%	8	0.6%	12	0.9%
<b>TOTAL</b>	<b>1,330</b>	<b>100.0%</b>	<b>1,377</b>	<b>100.0%</b>	<b>1,410</b>	<b>100.0%</b>	<b>1,345</b>	<b>100.0%</b>	<b>1,374</b>	<b>100.0%</b>

#### Notes

The number of walkovers is shown in brackets.

## Analysis of Racing by Size of Field



## Analysis of Racing

### Number of Different Horses Which Ran, Number of Different Horses Which Won, Number of Races Divided Overnight, and Number of Horses Balloted Out Or Eliminated

#### Flat Racing

	2002	2003	2004	2005	2006
No. of Different Horses Which Ran as 2-y-o	2,699	2,773	3,047	3,100	2,952
No. of Different Horses Which Ran as 3-y-o	3,019	3,024	3,206	3,393	3,388
No. of Different Horses Which Ran as 4-y-o +	3,873	3,930	4,295	4,496	4,614
No. of Different Horses Which Ran - TOTAL	9,591	9,727	10,548	10,989	10,954
Average Number of Runs per Horse that Ran	5.5	5.4	5.6	5.5	5.4
No. of Different Horses Which Won a Race	2,941	3,081	3,442	3,552	3,641
No. of Races Divided Overnight	281	192	207	184	177
No. of Horses Balloted Out or Eliminated	13,117	11,309	12,184	14,758	13,982

#### Jump Racing

	2002	2003	2004	2005	2006
No. of Different Horses Which Ran	8,704	8,553	9,130	9,315	9,783
Average Number of Runs per Horse that Ran	3.5	3.5	3.7	3.7	3.6
No. of Different Horses Which Won a Race	2,038	2,145	2,241	2,291	2,325
No. of Races Divided Overnight	58	49	79	58	76
No. of Horses Balloted Out or Eliminated	1,376	1,346	1,765	1,996	4,451

## Racing and Prize Money Statistics

### Entries, Runners, Eliminations and Prize Money by Type of Race

#### Flat Races

2006

Type of Race	No. of Races	Entries		Runners		Eliminations		Value £	% of Total Value
		Total	Average	Total	Average	Total	Average		
<b>HANDICAPS</b>									
Sellers	30	785	26.2	371	12.4	149	5.0	119,100	0.2%
Apprentices	136	3,624	26.6	1,549	11.4	336	2.5	706,290	1.1%
Amateurs	80	2,179	27.2	996	12.5	233	2.9	443,800	0.7%
Others	2,849	76,450	26.8	31,543	11.1	8,951	3.1	28,975,365	43.7%
<b>Sub-Total</b>	<b>3,095</b>	<b>83,038</b>	<b>26.8</b>	<b>34,459</b>	<b>11.1</b>	<b>9,669</b>	<b>3.1</b>	<b>30,244,555</b>	<b>45.7%</b>
<b>WEIGHT FOR AGE</b>									
Sellers	220	4,843	22.0	2,401	10.9	513	2.3	875,850	1.3%
Claimers	212	4,811	22.7	2,104	9.9	362	1.7	963,850	1.5%
Maidens	1,240	32,387	26.1	12,726	10.3	744	0.6	7,362,653	11.1%
Novices	70	1,363	19.5	403	5.8	0	0.0	486,093	0.7%
Apprentices	18	410	22.8	224	12.4	90	5.0	58,500	0.1%
Amateurs	3	64	21.3	39	13.0	24	8.0	11,000	0.0%
Pattern	138	5,223	37.8	1,323	9.6	9	0.1	18,262,008	27.6%
Others	558	13,049	23.4	5,563	10.0	2,373	4.3	7,979,302	12.0%
<b>Sub-Total</b>	<b>2,459</b>	<b>62,150</b>	<b>25.3</b>	<b>24,783</b>	<b>10.1</b>	<b>4,115</b>	<b>1.7</b>	<b>35,999,256</b>	<b>54.3%</b>
<b>TOTAL</b>	<b>5,554</b>	<b>145,188</b>	<b>26.1</b>	<b>59,242</b>	<b>10.7</b>	<b>13,784</b>	<b>2.5</b>	<b>66,243,811</b>	<b>100.0%</b>

**Notes**

The above prize money figures have been rounded up or down as necessary. Consequently, the total prize money may not equate to the sum of the individual parts.

**Racing and Prize Money Statistics**  
**Entries, Runners, Eliminations and Prize Money by Type of Race**

**Jump Races**  
**2006**

Type of Race	No. of Races	Entries		Runners		Eliminations		Value £	% of Total Value
		Total	Average	Total	Average	Total	Average		
<b>HURDLE RACES</b>									
HANDICAPS									
Novices'	135	4,327	32.1	1,600	11.9	334	2.5	1,075,964	2.9%
Sellers	58	1,629	28.1	750	12.9	131	2.3	218,700	0.6%
Conditional Jockeys	87	2,512	28.9	1,015	11.7	115	1.3	430,200	1.2%
Amateurs	35	1,089	31.1	418	11.9	73	2.1	182,850	0.5%
Others	522	15,269	29.3	5,937	11.4	698	1.3	5,974,116	16.2%
WEIGHT FOR AGE									
Novices'	588	18,035	30.7	6,459	11.0	721	1.2	5,094,683	13.8%
Maidens	184	6,683	36.3	2,363	12.8	686	3.7	920,900	2.5%
Sellers	80	1,975	24.7	893	11.2	104	1.3	295,800	0.8%
Conditional Jockeys	13	332	25.5	131	10.1	2	0.2	54,700	0.1%
Amateurs	3	91	30.3	29	9.7	0	0.0	16,000	0.0%
Others	53	1,216	22.9	500	9.4	20	0.4	2,006,417	5.4%
National Hunt Flat Races	248	8,036	32.4	3,022	12.2	753	3.0	905,450	2.5%
<b>Sub-Total</b>	<b>2,006</b>	<b>61,194</b>	<b>30.5</b>	<b>23,117</b>	<b>11.5</b>	<b>3,637</b>	<b>1.8</b>	<b>17,175,780</b>	<b>46.6%</b>
<b>STEEPLE CHASES</b>									
HANDICAPS									
Novices'	163	3,854	23.6	1,456	8.9	71	0.4	1,457,482	4.0%
Sellers	9	183	20.3	102	11.3	2	0.2	37,500	0.1%
Conditional Jockeys	17	367	21.6	155	9.1	19	1.1	109,300	0.3%
Amateurs	17	460	27.1	177	10.4	20	1.2	198,289	0.5%
Hunters	1	21	21.0	12	12.0	0	0.0	15,000	0.0%
Others	659	15,874	24.1	6,341	9.6	389	0.6	10,615,601	28.8%
WEIGHT FOR AGE									
Novices'	346	6,918	20.0	2,480	7.2	15	0.0	4,087,643	11.1%
Maidens	16	347	21.7	128	8.0	4	0.3	108,500	0.3%
Amateurs	3	77	25.7	41	13.7	0	0.0	72,000	0.2%
Hunters	108	2,484	23.0	1,093	10.1	68	0.6	506,909	1.4%
Others	35	728	20.8	266	7.6	0	0.0	2,468,108	6.7%
<b>Sub-Total</b>	<b>1,374</b>	<b>31,313</b>	<b>22.8</b>	<b>12,251</b>	<b>8.9</b>	<b>588</b>	<b>0.4</b>	<b>19,676,331</b>	<b>53.4%</b>
<b>GRAND TOTAL</b>	<b>3,380</b>	<b>92,507</b>	<b>27.4</b>	<b>35,368</b>	<b>10.5</b>	<b>4,225</b>	<b>1.3</b>	<b>36,852,111</b>	<b>100.0%</b>

**Notes**  
The above prize money figures have been rounded up or down as necessary. Consequently, the total prize money may not equate to the sum of the individual parts.



## Racing and Prize Money Statistics

### Entries, Runners, Eliminations and Prize Money by Distance of Race

#### Hurdle Races and National Hunt Flat Races

2006

Distance of Race	No. of Races	Entries		Runners		Eliminations		Value £	% of Total Value
		Total	Average	Total	Average	Total	Average		
<b>HANDICAPS</b>									
2 Miles	289	8,142	28.2	3,339	11.6	420	1.5	3,075,382	17.9%
2 ¼ Miles	80	2,190	27.4	885	11.1	131	1.6	584,526	3.4%
2 ½ Miles	204	6,494	31.8	2,366	11.6	369	1.8	1,899,888	11.1%
2 ¾ Miles	113	3,514	31.1	1,335	11.8	141	1.2	939,050	5.5%
3 Miles and over	151	4,486	29.7	1,795	11.9	290	1.9	1,382,984	8.1%
<b>Sub-Total</b>	<b>837</b>	<b>24,826</b>	<b>29.7</b>	<b>9,720</b>	<b>11.6</b>	<b>1,351</b>	<b>1.6</b>	<b>7,881,830</b>	<b>45.9%</b>
<b>WEIGHT FOR AGE</b>									
2 Miles	657	20,374	31.0	7,800	11.9	1,422	2.2	5,111,534	29.8%
2 ¼ Miles	125	3,684	29.5	1,365	10.9	225	1.8	593,453	3.5%
2 ½ Miles	219	7,505	34.3	2,471	11.3	529	2.4	1,860,235	10.8%
2 ¾ Miles	77	2,285	29.7	816	10.6	55	0.7	475,014	2.8%
3 Miles and over	91	2,520	27.7	945	10.4	55	0.6	1,253,714	7.3%
<b>Sub-Total</b>	<b>1,169</b>	<b>36,368</b>	<b>31.1</b>	<b>13,397</b>	<b>11.5</b>	<b>2,286</b>	<b>2.0</b>	<b>9,293,950</b>	<b>54.1%</b>
<b>TOTAL</b>	<b>2,006</b>	<b>61,194</b>	<b>30.5</b>	<b>23,117</b>	<b>11.5</b>	<b>3,637</b>	<b>1.8</b>	<b>17,175,780</b>	<b>100.0%</b>

**Notes**

The above prize money figures have been rounded up or down as necessary. Consequently, the total prize money may not equate to the sum of the individual parts.

## Racing and Prize Money Statistics

### Entries, Runners, Eliminations and Prize Money by Distance of Race

#### Steeple Chases

2006

Distance of Race	No. of Races	Entries		Runners		Eliminations		Value £	% of Total Value
		Total	Average	Total	Average	Total	Average		
<b>HANDICAPS</b>									
2 Miles	166	3,040	18.3	1,381	8.3	23	0.1	1,872,739	9.5%
2 ¼ Miles	65	1,378	21.2	603	9.3	5	0.1	653,800	3.3%
2 ½ Miles	212	5,164	24.4	1,950	9.2	117	0.6	2,675,181	13.6%
2 ¾ Miles	65	1,464	22.5	589	9.1	14	0.2	974,800	5.0%
3 Miles and over	358	9,713	27.1	3,720	10.4	342	1.0	6,256,652	31.8%
<b>Sub-Total</b>	<b>866</b>	<b>20,759</b>	<b>24.0</b>	<b>8,243</b>	<b>9.5</b>	<b>501</b>	<b>0.6</b>	<b>12,433,171</b>	<b>63.2%</b>
<b>WEIGHT FOR AGE</b>									
2 Miles	100	1,766	17.7	702	7.0	0	0.0	1,881,511	9.6%
2 ¼ Miles	34	713	21.0	241	7.1	2	0.1	331,008	1.7%
2 ½ Miles	138	3,000	21.7	1,092	7.9	24	0.2	1,709,709	8.7%
2 ¾ Miles	46	1,012	22.0	385	8.4	18	0.4	419,490	2.1%
3 Miles and over	190	4,063	21.4	1,588	8.4	43	0.2	2,901,442	14.7%
<b>Sub-Total</b>	<b>508</b>	<b>10,554</b>	<b>20.8</b>	<b>4,008</b>	<b>7.9</b>	<b>87</b>	<b>0.2</b>	<b>7,243,160</b>	<b>36.8%</b>
<b>TOTAL</b>	<b>1,374</b>	<b>31,313</b>	<b>22.8</b>	<b>12,251</b>	<b>8.9</b>	<b>588</b>	<b>0.4</b>	<b>19,676,331</b>	<b>100.0%</b>

**Notes**

The above prize money figures have been rounded up or down as necessary. Consequently, the total prize money may not equate to the sum of the individual parts.

## Prize Money by Source for Pattern Races

### Flat Racing

2006

Prize Money Contributions				
Racecourse	No. of Races	Racecourse Executive plus Sponsors £	Owners' Contribution £	Total Prize Fund £
ASCOT	27	3,359,060	1,279,335	4,638,395
AYR	1	47,000	3,000	50,000
CHESTER	4	247,549	17,935	265,484
EPSOM DOWNS	5	1,192,090	928,810	2,120,900
GOODWOOD	15	1,163,130	234,120	1,397,250
HAYDOCK PARK	3	364,000	101,000	465,000
KEMPTON PARK	2	87,450	2,550	90,000
LINGFIELD PARK	5	331,710	27,480	359,190
NEWBURY	13	760,045	203,605	963,650
NEWCASTLE	1	45,440	4,560	50,000
NEWMARKET	28	2,645,924	857,740	3,503,664
SALISBURY	1	67,000	3,000	70,000
SANDOWN PARK	9	783,085	185,240	968,325
WINDSOR	1	44,500	5,500	50,000
YORK	23	2,468,190	801,960	3,270,150
<b>TOTAL</b>	<b>138</b>	<b>13,606,173</b>	<b>4,655,835</b>	<b>18,262,008</b>

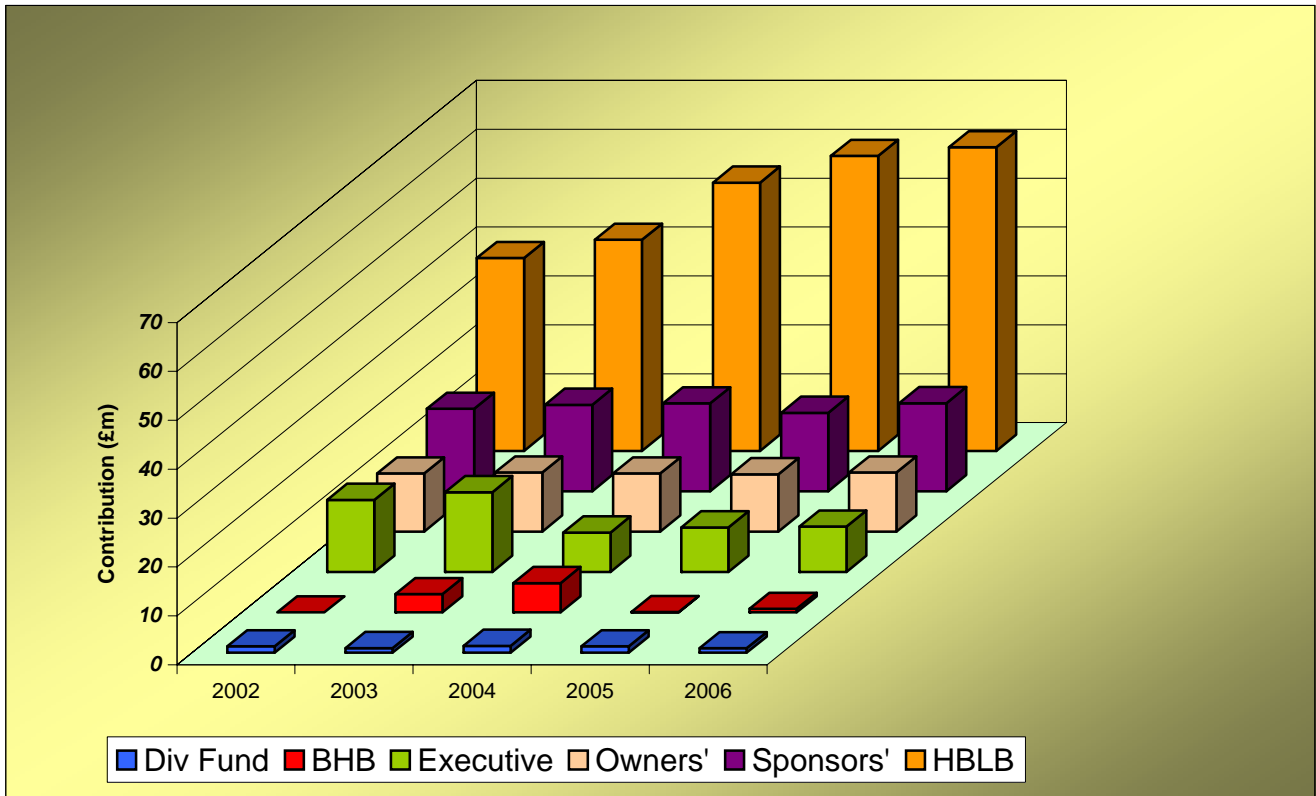
## Breakdown of Prize Money by Source

	£ Million						TOTAL
	Executive	Sponsors'	HBLB	Owners'	BHB	Div Fund	
<b>2002</b>	14.75	16.84	39.43	11.87	0.00	1.30	<b>84.20</b>
<b>2003</b>	16.30	17.69	43.15	12.08	3.72	0.95	<b>93.90</b>
<b>2004</b>	8.07	17.97	54.86	11.89	5.97	1.41	<b>100.17</b>
<b>2005</b>	9.13	16.04	60.32	11.72	0.07	1.30	<b>98.57</b>
<b>2006</b>	9.27	18.00	62.09	12.10	0.71	0.92	<b>103.10</b>

**Notes**

The above figures have been rounded to two decimal places.

Consequently, the TOTAL column will not always equate to the sum of the individual parts.



## Comparison of Flat/Jump Prize Money Pools

### Prize Money Statistics

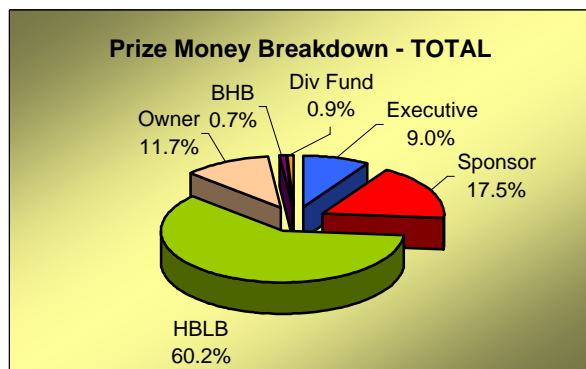
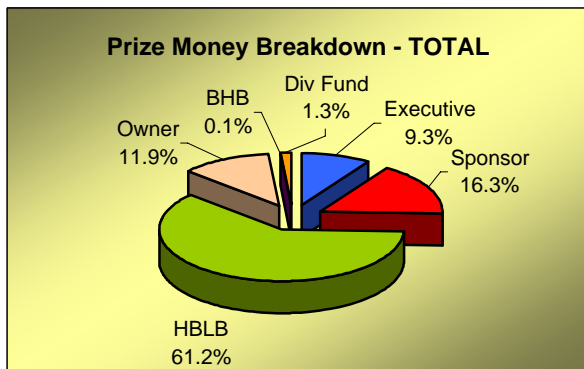
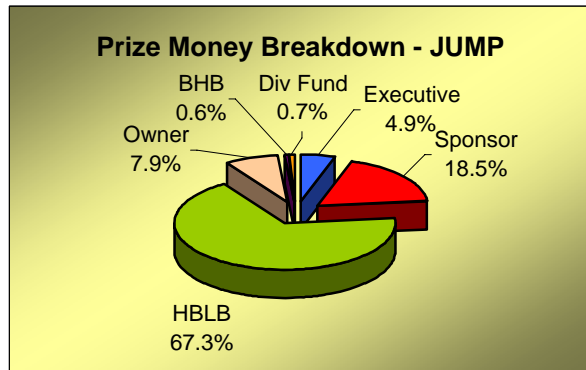
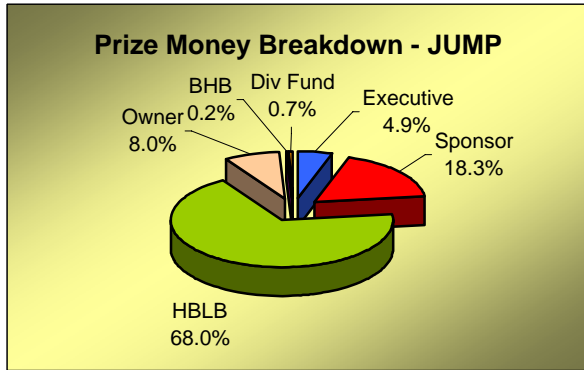
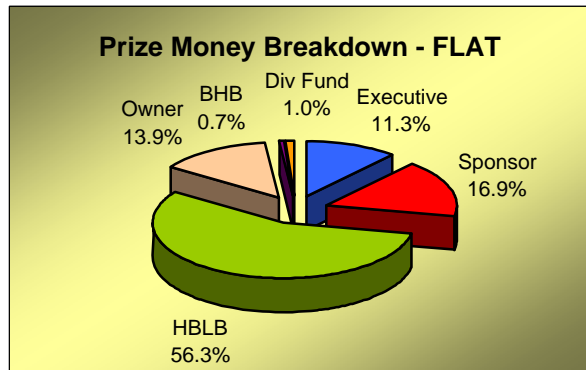
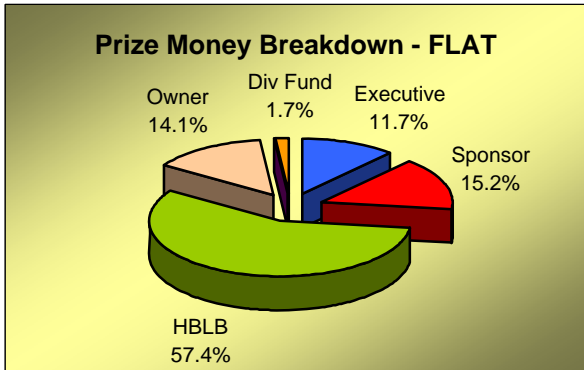
2005

	Flat	Jump	TOTAL
<b>Executive</b>	7,409,049	1,716,805	<b>9,125,854</b>
<b>Sponsor</b>	9,629,234	6,408,196	<b>16,037,430</b>
<b>HBLB</b>	36,465,474	23,855,036	<b>60,320,510</b>
<b>Owner</b>	8,925,296	2,797,201	<b>11,722,497</b>
<b>BHB</b>	0	67,000	<b>67,000</b>
<b>Div Fund</b>	1,071,700	229,100	<b>1,300,800</b>
<b>TOTAL</b>	<b>63,500,753</b>	<b>35,073,338</b>	<b>98,574,091</b>

### Prize Money Statistics

2006

	Flat	Jump	TOTAL
<b>Executive</b>	7,464,918	1,809,662	<b>9,274,580</b>
<b>Sponsor</b>	11,169,101	6,831,810	<b>18,000,911</b>
<b>HBLB</b>	37,293,428	24,797,160	<b>62,090,588</b>
<b>Owner</b>	9,184,664	2,912,929	<b>12,097,593</b>
<b>BHB</b>	474,000	238,000	<b>712,000</b>
<b>Div Fund</b>	657,700	262,550	<b>920,250</b>
<b>TOTAL</b>	<b>66,243,811</b>	<b>36,852,111</b>	<b>103,095,922</b>



**Notes**

The above figures have been rounded up or down as necessary. Consequently, the totals will not always equate to the sum of the individual parts.

## Total Prize Money by Racecourse Flat Racing - 2006

	Fixtures Ran (Aban)	Exec+Spon	HBLB	Owner	BHB	Div Fund	TOTAL
ASCOT	14	3,890,842	1,634,000	1,751,992	9,000	0	7,285,834
AYR	17	305,266	830,430	134,094	2,000	0	1,271,790
BATH	19	75,079	681,220	36,901	4,000	10,700	807,900
BEVERLEY	18 (1)	172,565	708,340	67,384	26,000	7,500	981,789
BRIGHTON	19 (1)	103	647,680	30,679	0	0	678,462
CARLISLE	9	58,489	269,077	21,434	0	0	349,000
CATTERICK BRIDGE	18	87,843	613,000	51,840	2,000	10,000	764,683
CHEPSTOW	13 (1)	8,525	420,455	24,320	2,000	0	455,300
CHESTER	12	480,686	781,360	73,574	35,000	0	1,370,620
EPSOM DOWNS	8	1,339,029	619,800	995,237	5,000	0	2,959,066
FOLKESTONE	14	17,117	499,470	32,923	5,000	5,000	559,510
GOODWOOD	20	1,465,979	1,593,780	471,028	0	0	3,530,787
HAMILTON PARK	17	120,602	659,220	51,457	12,000	0	843,279
HAYDOCK PARK	20	618,797	1,234,317	257,928	14,000	0	2,125,042
KEMPTON PARK	54	471,687	1,952,320	139,008	27,500	29,500	2,620,015
LEICESTER	19 (2)	129,068	784,570	67,603	27,000	22,000	1,030,241
LINGFIELD PARK	91	423,378	3,924,696	279,524	33,000	138,500	4,799,097
MUSSELBURGH	18	200,269	633,450	52,291	0	0	886,010
NEWBURY	17 (1)	782,642	1,188,690	438,312	28,500	72,000	2,510,144
NEWCASTLE	14 (1)	266,146	571,420	63,519	0	9,500	910,585
NEWMARKET	37	2,784,130	2,978,780	1,422,550	75,000	50,000	7,310,460
NOTTINGHAM	20	71,647	724,180	85,539	25,500	43,000	949,866
PONTEFRACT	16	186,756	792,610	67,730	13,000	14,000	1,074,096
REDCAR	17 (1)	181,567	691,800	283,633	0	3,000	1,160,000
RIPON	14	192,902	586,700	27,183	20,000	17,000	843,785
SALISBURY	13 (1)	196,654	621,344	72,805	26,000	17,000	933,803
SANDOWN PARK	18	679,971	1,145,787	267,174	11,000	0	2,103,932
SOUTHWELL	67	-30,707	1,900,440	88,562	16,000	53,500	2,027,796
THIRSK	13	206,375	500,455	670	9,000	5,000	721,500
WARWICK	14	88,389	443,850	59,761	2,500	18,000	612,500
WINDSOR	27	231,012	1,119,773	128,949	26,000	26,000	1,531,734
WOLVERHAMPTON	111	74,118	3,330,014	195,195	8,000	102,000	3,709,327
YARMOUTH	21 (1)	51,793	770,960	43,757	5,000	4,500	876,010
YORK	17	2,805,302	1,439,440	1,400,108	5,000	0	5,649,850
<b>TOTAL</b>	<b>836 (10)</b>	<b>18,634,019</b>	<b>37,293,428</b>	<b>9,184,664</b>	<b>474,000</b>	<b>657,700</b>	<b>66,243,811</b>

### Notes

The above figures have been rounded up or down as necessary. Consequently, the totals will not always equate to the sum of the individual parts.  
 No fixtures were held at Doncaster in 2006, due to re-development work being carried out.  
 No fixtures were staged at Great Leighs in 2006, as the opening of the racecourse had been delayed.

## Total Prize Money by Racecourse Jump Racing - 2006

	Fixtures Ran	(Aban)	Exec+Spon	HBLB	Owner	BHB	Div Fund	TOTAL
AINTREE	7		1,595,802	795,200	303,909	9,000	0	2,703,911
ASCOT	6		720,260	533,520	51,965	13,000	0	1,318,745
AYR	13	(1)	187,894	645,100	104,482	13,000	5,000	955,476
BANGOR-ON-DEE	12	(2)	82,650	469,820	34,901	0	16,600	603,971
CARLISLE	10	(2)	22,728	477,100	29,147	6,000	0	534,975
CARTMEL	6		30,930	159,725	12,045	0	4,000	206,700
CATTERICK BRIDGE	7	(2)	-6,248	270,430	21,318	0	7,000	292,500
CHELTENHAM	15	(1)	2,457,175	1,580,420	811,527	27,000	0	4,876,122
CHEPSTOW	14	(2)	63,336	726,650	50,132	0	9,100	849,218
EXETER	17		94,684	745,360	70,005	13,000	11,500	934,549
FAKENHAM	10	(1)	27,516	403,200	18,224	3,000	8,000	459,940
FOLKESTONE	8	(1)	8,219	262,080	19,701	0	8,000	298,000
FONTWELL PARK	22	(1)	90,573	890,650	41,331	3,000	7,800	1,033,354
HAYDOCK PARK	10	(1)	581,171	827,283	85,029	6,000	2,500	1,501,983
HEREFORD	17	(1)	23,616	622,940	42,714	0	10,930	700,200
HEXHAM	12	(2)	-2,643	416,300	30,843	3,000	8,500	456,000
HUNTINGDON	16	(2)	87,094	618,910	49,691	0	1,000	756,695
KELSO	12	(2)	-53,780	574,145	42,155	13,000	16,400	591,920
KEMPTON PARK	5		339,462	425,000	34,923	13,000	0	812,385
LEICESTER	11		44,104	440,810	40,970	10,000	0	535,884
LINGFIELD PARK	4	(2)	39,155	332,077	24,785	0	0	396,016
LUDLOW	15	(1)	95,160	645,110	25,740	10,000	5,500	781,510
MARKET RASEN	21		166,595	858,920	71,215	0	19,770	1,116,500
MUSSELBURGH	8		4,634	339,060	21,806	10,000	2,000	377,500
NEWBURY	10	(1)	199,117	835,600	110,271	3,000	2,500	1,150,488
NEWCASTLE	8	(3)	92,233	435,000	24,869	0	0	552,102
NEWTON ABBOT	16	(2)	64,689	631,120	4,808	6,000	0	706,617
PERTH	12		83,677	569,560	30,463	6,000	0	689,700
PLUMPTON	14	(2)	16,933	542,285	33,515	6,000	6,000	604,733
SANDOWN PARK	9		753,539	902,553	145,600	3,000	0	1,804,691
SEDFIELD	19	(1)	51,890	617,585	35,005	0	32,450	736,930
SOUTHWELL	10	(1)	68,275	398,800	39,225	15,000	0	521,300
STRATFORD-ON-AVON	15		185,668	701,920	60,912	6,000	11,000	965,500
TAUNTON	13	(2)	66,711	509,800	44,852	0	18,500	639,863
TOWCESTER	17		8,937	598,270	50,615	0	5,000	662,822
UTTOXETER	22	(3)	42,201	1,028,367	63,482	10,000	5,500	1,149,550
WARWICK	9	(1)	-27,984	529,530	38,545	8,000	0	548,091
WETHERBY	17	(1)	135,518	865,140	78,958	10,000	5,000	1,094,616
WINCANTON	16		200,976	886,821	61,760	13,000	16,000	1,178,557
WORCESTER	21		-991	685,000	51,491	0	17,000	752,500
<b>TOTAL</b>	<b>506</b>	<b>(41)</b>	<b>8,641,472</b>	<b>24,797,160</b>	<b>2,912,929</b>	<b>238,000</b>	<b>262,550</b>	<b>36,852,111</b>

### Notes

The above figures have been rounded up or down as necessary. Consequently, the totals will not always equate to the sum of the individual parts. No fixtures were held at Doncaster in 2006, due to re-development work being carried out.

## Total Prize Money by Racecourse All Racing - 2006

	Fixtures Ran (Aban)	Exec+Spon	HBLB	Owner	BHB	Div Fund	TOTAL
AINTREE	7	1,595,802	795,200	303,909	9,000	0	2,703,911
ASCOT	20	4,611,102	2,167,520	1,803,957	22,000	0	8,604,579
AYR	30 (1)	493,160	1,475,530	238,576	15,000	5,000	2,227,266
BANGOR-ON-DEE	12 (2)	82,650	469,820	34,901	0	16,600	603,971
BATH	19	75,079	681,220	36,901	4,000	10,700	807,900
BEVERLEY	18 (1)	172,565	708,340	67,384	26,000	7,500	981,789
BRIGHTON	19 (1)	103	647,680	30,679	0	0	678,462
CARLISLE	19 (2)	81,217	746,177	50,581	6,000	0	883,975
CARTMEL	6	30,930	159,725	12,045	0	4,000	206,700
CATTERICK BRIDGE	25 (2)	81,595	883,430	73,158	2,000	17,000	1,057,183
CHELTENHAM	15 (1)	2,457,175	1,580,420	811,527	27,000	0	4,876,122
CHEPSTOW	27 (3)	71,861	1,147,105	74,452	2,000	9,100	1,304,518
CHESTER	12	480,686	781,360	73,574	35,000	0	1,370,620
EPSOM DOWNS	8	1,339,029	619,800	995,237	5,000	0	2,959,066
EXETER	17	94,684	745,360	70,005	13,000	11,500	934,549
FAKENHAM	10 (1)	27,516	403,200	18,224	3,000	8,000	459,940
FOLKESTONE	22 (1)	25,336	761,550	52,624	5,000	13,000	857,510
FONTWELL PARK	22 (1)	90,573	890,650	41,331	3,000	7,800	1,033,354
GOODWOOD	20	1,465,979	1,593,780	471,028	0	0	3,530,787
HAMILTON PARK	17	120,602	659,220	51,457	12,000	0	843,279
HAYDOCK PARK	30 (1)	1,199,967	2,061,600	342,957	20,000	2,500	3,627,024
HEREFORD	17 (1)	23,616	622,940	42,714	0	10,930	700,200
HEXHAM	12 (2)	-2,643	416,300	30,843	3,000	8,500	456,000
HUNTINGDON	16 (2)	87,094	618,910	49,691	0	1,000	756,695
KELSO	12 (2)	-53,780	574,145	42,155	13,000	16,400	591,920
KEMPTON PARK	59	811,149	2,377,320	173,931	40,500	29,500	3,432,400
LEICESTER	30 (2)	173,172	1,225,380	108,573	37,000	22,000	1,566,125
LINGFIELD PARK	95 (2)	462,532	4,256,772	304,309	33,000	138,500	5,195,113
LUDLOW	15 (1)	95,160	645,110	25,740	10,000	5,500	781,510
MARKET RASEN	21	166,595	858,920	71,215	0	19,770	1,116,500
MUSSELBURGH	26	204,903	972,510	74,097	10,000	2,000	1,263,510
NEWBURY	27 (2)	981,759	2,024,290	548,583	31,500	74,500	3,660,632
NEWCASTLE	22 (4)	358,379	1,006,420	88,388	0	9,500	1,462,687
NEWMARKET	37	2,784,130	2,978,780	1,422,550	75,000	50,000	7,310,460
NEWTON ABBOT	16 (2)	64,689	631,120	4,808	6,000	0	706,617
NOTTINGHAM	20	71,647	724,180	85,539	25,500	43,000	949,866
PERTH	12	83,677	569,560	30,463	6,000	0	689,700
PLUMPTON	14 (2)	16,933	542,285	33,515	6,000	6,000	604,733
PONTEFRACT	16	186,756	792,610	67,730	13,000	14,000	1,074,096
REDCAR	17 (1)	181,567	691,800	283,633	0	3,000	1,160,000
RIPON	14	192,902	586,700	27,183	20,000	17,000	843,785
SALISBURY	13 (1)	196,654	621,344	72,805	26,000	17,000	933,803
SANDOWN PARK	27	1,433,509	2,048,340	412,774	14,000	0	3,908,623
SEDFIELD	19 (1)	51,890	617,585	35,005	0	32,450	736,930
SOUTHWELL	77 (1)	37,569	2,299,240	127,787	31,000	53,500	2,549,096
STRATFORD-ON-AVON	15	185,668	701,920	60,912	6,000	11,000	965,500
TAUNTON	13 (2)	66,711	509,800	44,852	0	18,500	639,863
THIRSK	13	206,375	500,455	670	9,000	5,000	721,500
TOWCESTER	17	8,937	598,270	50,615	0	5,000	662,822
UTTOXETER	22 (3)	42,201	1,028,367	63,482	10,000	5,500	1,149,550
WARWICK	23 (1)	60,405	973,380	98,306	10,500	18,000	1,160,591
WETHERBY	17 (1)	135,518	865,140	78,958	10,000	5,000	1,094,616
WINCANTON	16	200,976	886,821	61,760	13,000	16,000	1,178,557
WINDSOR	27	231,012	1,119,773	128,949	26,000	26,000	1,531,734
WOLVERHAMPTON	111	74,118	3,330,014	195,195	8,000	102,000	3,709,327
WORCESTER	21	-991	685,000	51,491	0	17,000	752,500
YARMOUTH	21 (1)	51,793	770,960	43,757	5,000	4,500	876,010
YORK	17	2,805,302	1,439,440	1,400,108	5,000	0	5,649,850
<b>TOTAL</b>	<b>1,342 (51)</b>	<b>27,275,491</b>	<b>62,090,588</b>	<b>12,097,593</b>	<b>712,000</b>	<b>920,250</b>	<b>103,095,922</b>

### Notes

The above figures have been rounded up or down as necessary. Consequently, the totals will not always equate to the sum of the individual parts. No fixtures were held at Doncaster in 2006, due to re-development work being carried out. No fixtures were staged at Great Leighs in 2006, as the opening of the racecourse had been delayed.



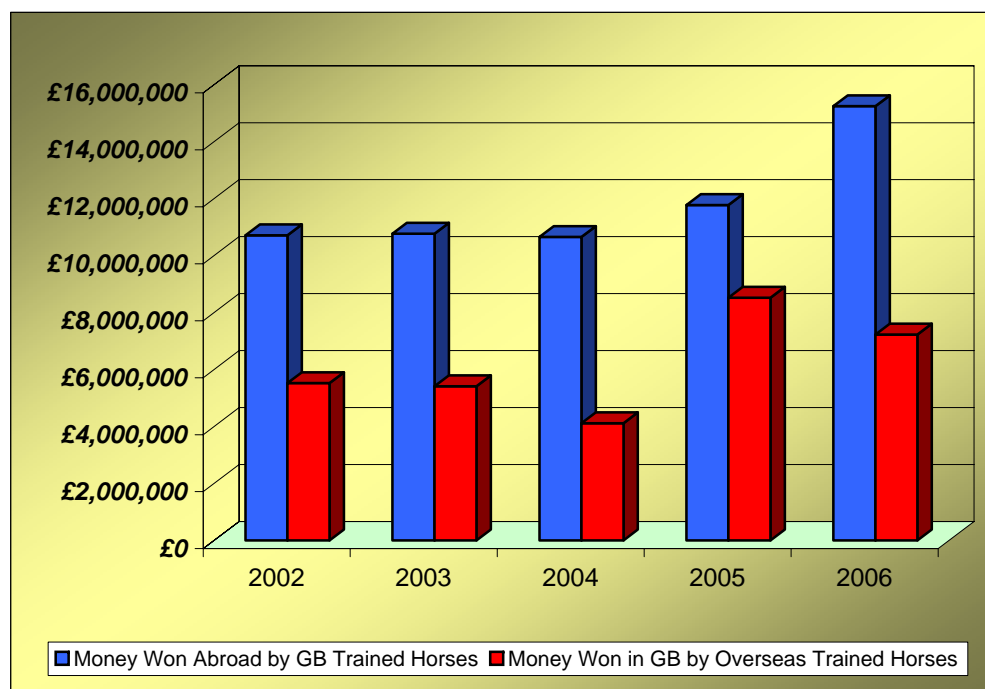
## Sponsored Number Cloth Income

**2006**

	FLAT	JUMP	TOTAL
AINTREE		17,500	17,500
ASCOT	33,500	7,750	41,250
AYR	3,750	1,500	5,250
BANGOR-ON-DEE		500	500
BATH	1,000		1,000
BEVERLEY	250		250
BRIGHTON	250		250
CARLISLE	0	1,500	1,500
CARTMEL		0	0
CATTERICK BRIDGE	500	0	500
CHELTENHAM		18,750	18,750
CHEPSTOW	0	2,500	2,500
CHESTER	5,500		5,500
EPSOM DOWNS	8,000		8,000
EXETER		250	250
FAKENHAM		0	0
FOLKESTONE	2,000	0	2,000
FONTWELL PARK		2,500	2,500
GOODWOOD	13,500		13,500
HAMILTON PARK	750		750
HAYDOCK PARK	5,000	6,000	11,000
HEREFORD		750	750
HEXHAM		0	0
HUNTINGDON		1,750	1,750
KELSO		250	250
KEMPTON PARK	5,250	4,000	9,250
LEICESTER	0	0	0
LINGFIELD PARK	4,750	2,500	7,250
LUDLOW		0	0
MARKET RASEN		4,250	4,250
MUSSELBURGH	750	1,500	2,250
NEWBURY	10,750	5,250	16,000
NEWCASTLE	3,250	3,500	6,750
NEWMARKET	25,250		25,250
NEWTON ABBOT		0	0
NOTTINGHAM	1,500		1,500
PERTH		1,500	1,500
PLUMPTON		500	500
PONTEFRACT	0		0
REDCAR	3,000		3,000
RIPON	1,500		1,500
SALISBURY	1,000		1,000
SANDOWN PARK	6,750	10,500	17,250
SEDFIELD		250	250
SOUTHWELL	0	1,000	1,000
STRATFORD-ON-AVON		500	500
TAUNTON		0	0
THIRSK	0		0
TOWCESTER		500	500
UTTOXETER		3,000	3,000
WARWICK	0	2,500	2,500
WETHERBY		4,500	4,500
WINCANTON		3,750	3,750
WINDSOR	2,500		2,500
WOLVERHAMPTON	1,000		1,000
WORCESTER		250	250
YARMOUTH	0		0
YORK	20,250		20,250
<b>TOTAL</b>	<b>161,500</b>	<b>111,250</b>	<b>272,750</b>

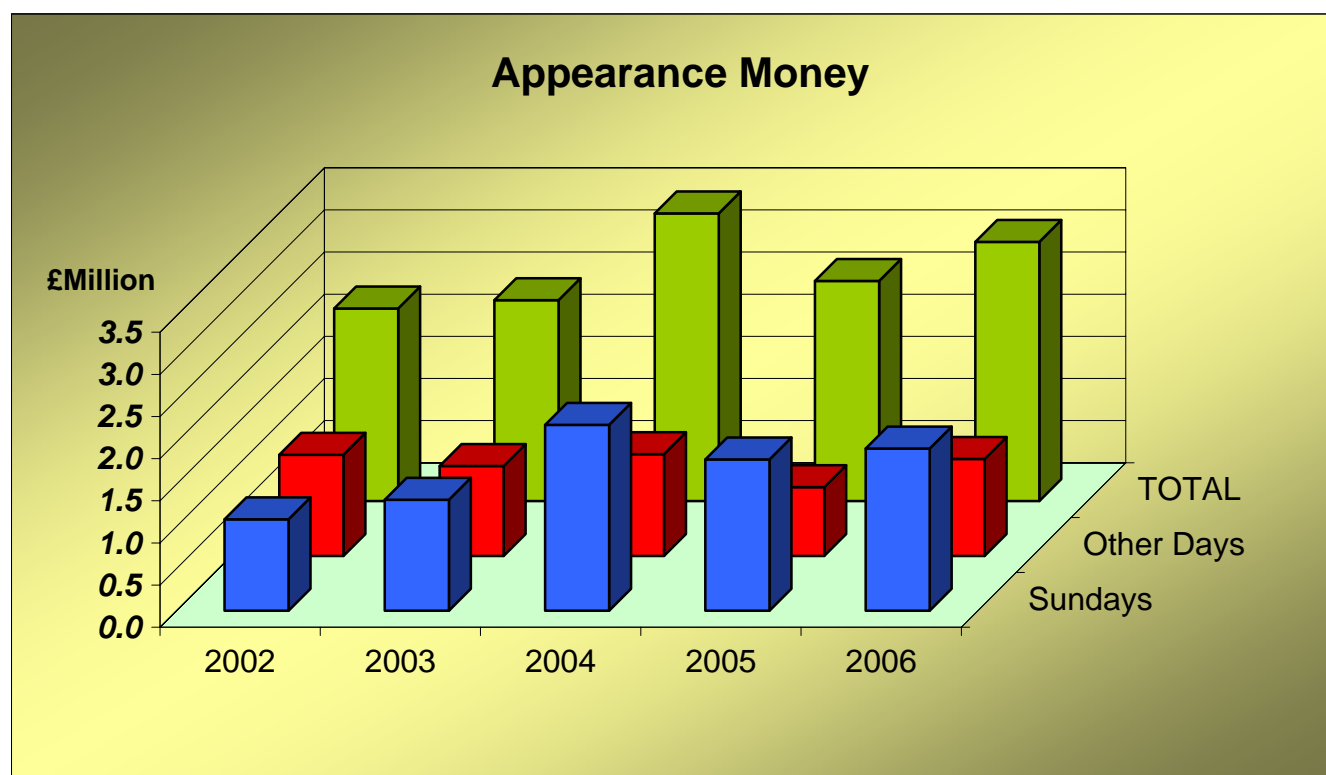
## Prize Money Entering and Leaving Great Britain

	2002	2003	2004	2005	2006
<b>Prize Money WON ABROAD</b>					
by horses trained in Great Britain	10,713,058	10,769,887	10,656,247	11,777,096	15,247,516
<b>Prize Money WON IN GREAT BRITAIN</b>					
by horses trained outside of Great Britain	5,524,188	5,413,201	4,115,195	8,521,477	7,231,583



## Appearance Money and Owners' Premium Payments

	2002	2003	2004	2005	2006
	£	£	£	£	£
<b>APPEARANCE MONEY</b>					
Sundays	1,085,100	1,316,950	2,206,600	1,795,330	1,925,050
Other Days	1,200,000	1,067,550	1,207,950	816,510	1,150,950
<b>TOTAL</b>	<b>2,285,100</b>	<b>2,384,500</b>	<b>3,414,550</b>	<b>2,611,840</b>	<b>3,076,000</b>
<b>OWNERS' PREMIUMS</b>					
	N/A	N/A	1,050,205	446,860	707,854



# **SECTION E**

## **RACECOURSES**

### **TABLE 1**

#### **Racecourse Activities**

The number of Fixtures that took place and that were Abandoned, the number of Races, Entries and Runners, and the total Public Attendance for each Racecourse. Average Runners per Race and Average Daily Attendance is also shown. Mixed Fixtures are counted as Flat Fixtures for the purposes of these tables. A separate table is shown for Flat Racing, Jump Racing and All Racing.

### **TABLE 2**

#### **Monthly Attendance Figures**

The total Public Attendances at Racecourses each month by Flat, Jump and Total for the last 5 years. Mixed Meeting Attendances are included with the Flat figures.

### **TABLE 3**

#### **Daily Spread of Public Attendances**

An analysis of Public Attendances at Racecourses, Flat and Jump shown separately, on each day of the week and Bank Holidays during the year, for the last 5 years. Mixed Meeting Attendances are included with the Flat figures.

## Racecourse Activities 2006 Flat

Racecourse	Fixtures	Abandoned	Races	Entries	Runners	Ave Runners	Attendance	Ave Attendance
ASCOT	14		87	3,564	1,154	13.3	467,238	33,374
AYR	17		118	3,221	1,205	10.2	62,430	3,672
BATH	19		121	3,276	1,367	11.3	56,151	2,955
BEVERLEY	18	1	119	3,088	1,267	10.6	84,856	4,714
BRIGHTON	19	1	121	2,634	1,140	9.4	36,113	1,901
CARLISLE	9		57	1,636	608	10.7	28,509	3,168
CATTERICK BRIDGE	18		121	3,086	1,326	11.0	37,763	2,098
CHEPSTOW	13	1	80	2,367	886	11.1	44,120	3,394
CHESTER	12		73	1,734	678	9.3	234,162	19,514
EPSOM DOWNS	8		51	1,761	501	9.8	118,366	14,796
FOLKESTONE	14		89	2,235	846	9.5	22,418	1,601
GOODWOOD	20		138	3,828	1,451	10.5	202,228	10,111
HAMILTON PARK	17		108	2,457	925	8.6	68,775	4,046
HAYDOCK PARK	20		127	4,095	1,255	9.9	151,141	7,557
KEMPTON PARK	54		346	8,126	3,821	11.0	111,569	2,066
LEICESTER	19	2	126	3,859	1,276	10.1	29,785	1,568
LINGFIELD PARK	91		639	14,224	6,672	10.4	137,883	1,515
MUSSELBURGH	18		116	2,638	1,142	9.8	52,265	2,904
NEWBURY	17	1	122	3,724	1,410	11.6	130,745	7,691
NEWCASTLE	14	1	90	2,747	1,040	11.6	64,276	4,591
NEWMARKET	37		264	7,804	2,954	11.2	352,990	9,540
NOTTINGHAM	20		140	4,957	1,655	11.8	38,125	1,906
PONTEFRAC T	16		108	3,038	1,144	10.6	89,121	5,570
REDCAR	17	1	115	3,873	1,351	11.7	57,900	3,406
RIPON	14		89	2,265	957	10.8	73,819	5,273
SALISBURY	13	1	88	2,356	924	10.5	49,152	3,781
SANDOWN PARK	18		107	2,973	1,025	9.6	106,632	5,924
SOUTHWELL	67		456	8,782	4,818	10.6	58,276	870
THIRSK	13		81	2,533	903	11.1	62,250	4,788
WARWICK	14		96	3,116	1,079	11.2	35,487	2,535
WINDSOR	27		168	4,953	1,940	11.5	123,276	4,566
WOLVERHAMPTON	111		743	17,107	7,919	10.7	86,070	775
YARMOUTH	21	1	136	3,596	1,380	10.1	60,624	2,887
YORK	17		114	3,535	1,223	10.7	336,720	19,807
<b>TOTAL</b>	<b>836</b>	<b>10</b>	<b>5,554</b>	<b>145,188</b>	<b>59,242</b>	<b>10.7</b>	<b>3,671,235</b>	<b>4,391</b>

### Notes

Mixed attendances are included with the Flat figures.

No fixtures were held at Doncaster in 2006, due to re-development work being carried out.

No fixtures were staged at Great Leighs in 2006, as the opening of the racecourse had been delayed.

# Racecourse Activities 2006 Flat

## Notes

### BATH

- a) 4 races abandoned (fog)

### BRIGHTON

- a) 1 additional race programmed

### CATTERICK BRIDGE

- a) 1 additional race programmed

### CHEPSTOW

- a) 1 race abandoned (fading light) after meeting had been delayed

### FOLKESTONE

- a) 1 fixture transferred from Doncaster

### HAYDOCK PARK

- a) 1 fixture transferred from Epsom Downs
- b) 1 additional race programmed

### KEMPTON PARK

- a) 54 All Weather Track fixtures
- b) 3 fixtures transferred from Great Leighs
- c) 2 fixtures transferred from Epsom Downs
- d) 3 races abandoned (fog)

### LINGFIELD PARK

- a) 67 All Weather Track fixtures, including 2 fixtures where Turf races were transferred to AWT
- b) 6 fixtures transferred from Great Leighs
- c) 5 fixtures transferred from Doncaster
- d) 1 fixture transferred from Windsor
- e) 1 fixture transferred from York
- f) 1 additional Mixed (AWT) fixture due to original Jump fixture being abandoned
- g) 1 race abandoned - security alert

### MUSSELBURGH

- a) 4 races abandoned (unsafe ground conditions)

### NEWBURY

- a) Staged the Racing Post Trophy (from Doncaster)

### REDCAR

- a) 1 fixture transferred from Doncaster

### SALISBURY

- a) 1 additional race programmed

### SOUTHWELL

- a) 63 All Weather Track fixtures, including 1 fixture where Turf races were transferred to AWT
- b) 3 fixtures transferred from Doncaster
- c) 2 fixtures transferred from Great Leighs  
(1 of which had previously been transferred from Newbury)
- d) 1 fixture transferred from Lingfield Park
- e) 1 fixture transferred from Newbury
- f) 3 races abandoned (fog)

### THIRSK

- a) 5 races abandoned (waterlogged)

### WARWICK

- a) 1 fixture transferred from Redcar

### WINDSOR

- a) 3 fixtures transferred from Doncaster
- b) 1 race abandoned (slippery bend)

### WOLVERHAMPTON

- a) 111 All Weather Track fixtures
- b) 2 additional fixtures
- c) 12 fixtures transferred from Great Leighs
- d) 3 fixtures transferred from Doncaster
- e) 1 fixture transferred from Lingfield Park
- f) 1 fixture transferred from York
- g) On 2 occasions, 4 races were transferred from Great Leighs to produce a 10-race card
- h) 2 races abandoned (fog)

### YORK

- a) 4 fixtures transferred from Doncaster

## Racecourse Activities 2006 Jump

Racecourse	Fixtures	Abandoned	Races	Entries	Runners	Ave Runners	Attendance	Ave Attendance
AINTREE	7		45	1,353	620	13.8	178,522	25,503
ASCOT	6		38	952	371	9.8	71,354	11,892
AYR	13	1	88	2,256	856	9.7	39,384	3,030
BANGOR-ON-DEE	12	2	80	2,167	767	9.6	46,049	3,837
CARLISLE	10	2	68	1,843	697	10.3	27,227	2,723
CARTMEL	6		37	1,052	363	9.8	59,889	9,982
CATTERICK BRIDGE	7	2	49	1,249	624	12.7	13,920	1,989
CHELTENHAM	15	1	97	3,563	1,328	13.7	401,642	26,776
CHEPSTOW	14	2	96	2,880	1,083	11.3	49,970	3,569
EXETER	17		111	3,004	1,136	10.2	35,125	2,066
FAKENHAM	10	1	66	1,394	578	8.8	28,078	2,808
FOLKESTONE	8	1	55	1,265	519	9.4	11,240	1,405
FONTWELL PARK	22	1	146	3,410	1,344	9.2	57,442	2,611
HAYDOCK PARK	10	1	71	1,997	745	10.5	59,050	5,905
HEREFORD	17	1	119	3,951	1,450	12.2	29,449	1,732
HEXHAM	12	2	81	2,161	851	10.5	24,353	2,029
HUNTINGDON	16	2	106	3,185	1,176	11.1	41,340	2,584
KELSO	12	2	81	2,161	885	10.9	35,626	2,969
KEMPTON PARK	5		31	686	278	9.0	33,769	6,754
LEICESTER	11		67	1,938	655	9.8	11,816	1,074
LINGFIELD PARK	4	2	30	750	275	9.2	8,011	2,003
LUDLOW	15	1	105	2,591	1,161	11.1	28,793	1,920
MARKET RASEN	21		144	3,774	1,385	9.6	74,359	3,541
MUSSELBURGH	8		56	1,312	643	11.5	17,777	2,222
NEWBURY	10	1	69	2,021	849	12.3	70,677	7,068
NEWCASTLE	8	3	56	1,539	596	10.6	22,211	2,776
NEWTON ABBOT	16	2	99	2,416	894	9.0	47,230	2,952
PERTH	12		78	2,312	794	10.2	54,089	4,507
PLUMPTON	14	2	95	2,256	879	9.3	36,943	2,639
SANDOWN PARK	9		63	1,551	588	9.3	51,318	5,702
SEDFIELD	19	1	123	3,200	1,335	10.9	31,472	1,656
SOUTHWELL	10	1	64	1,999	693	10.8	16,088	1,609
STRATFORD-ON-AVON	15		99	2,529	1,010	10.2	54,348	3,623
TAUNTON	13	2	89	2,352	941	10.6	25,525	1,963
TOWCESTER	17		109	3,237	1,214	11.1	67,794	3,988
UTTOXETER	22	3	144	4,665	1,543	10.7	125,220	5,692
WARWICK	9	1	63	1,894	647	10.3	16,966	1,885
WETHERBY	17	1	114	2,775	1,052	9.2	85,936	5,055
WINCANTON	16		107	2,607	1,080	10.1	56,107	3,507
WORCESTER	21		141	4,260	1,463	10.4	46,599	2,219
<b>TOTAL</b>	<b>506</b>	<b>41</b>	<b>3,380</b>	<b>92,507</b>	<b>35,368</b>	<b>10.5</b>	<b>2,192,708</b>	<b>4,333</b>

### Notes

No fixtures were held at Doncaster in 2006, due to re-development work being carried out.

# Racecourse Activities

## 2006

### Jump

#### Notes

##### AYR

- a) 1 replacement fixture
- b) 1 steeple chase, 2 hurdle races and 1 NHF race abandoned  
(course evacuated due to nearby fire)

##### CARLISLE

- a) 1 fixture normally a Kempton fixture (Kempton being re-developed)

##### CHELTENHAM

- a) Challow Novices' Hurdle transferred from Newbury 29/12/05

##### FAKENHAM

- a) 1 replacement fixture
- b) 1 fixture transferred from Doncaster

##### FOLKESTONE

- a) 1 additional hurdle race programmed

##### FONTWELL PARK

- a) 1 replacement fixture

##### HAYDOCK PARK

- a) 1 fixture normally a Kempton fixture (Kempton being re-developed)  
- abandoned

##### HEREFORD

- a) 2 replacement fixtures
- b) 1 additional hurdle race programmed

##### KELSO

- a) 1 additional fixture
- b) 1 additional steeple chase and 1 additional NHF race programmed

##### LINGFIELD PARK

- a) 1 fixture transferred from Doncaster  
- abandoned and replaced with a Mixed (AWT) fixture
- b) 2 fixtures normally Ascot fixtures (Ascot being re-developed)
- c) Game Spirit Steeple Chase transferred from Newbury

##### MARKET RASEN

- a) 1 additional hurdle race programmed
- b) 3 steeple chases abandoned (waterlogging) and 2 hurdle races divided  
to produce a 6-race card

##### SANDOWN PARK

- a) 2 fixtures normally Kempton fixtures (Kempton being re-developed)
- b) Cleeve Hurdle re-scheduled from Cheltenham and replacement race  
for Victor Chandler Chase programmed

##### SOUTHWELL

- a) 1 replacement fixture
- b) 4 fixtures transferred from Doncaster (1 of which was abandoned)

##### UTTOXETER

- a) 1 replacement fixture
- b) 1 steeple chase and 1 NHF race abandoned  
(insufficient medical cover following serious accident)
- c) 2 steeple chases abandoned (waterlogged) and 2 hurdle races divided

##### WETHERBY

- a) 1 replacement fixture
- b) 1 additional steeple chase programmed

##### WINCANTON

- a) 1 fixture normally Kempton fixture (Kempton being re-developed)
- b) Cotswold Chase re-scheduled from Cheltenham
- c) Kingmaker Novices' Chase transferred from Warwick  
(replacing existing Novices' Chase)



# Racecourse Activities 2006 All Racing

Racecourse	Fixtures	Abandoned	Races	Entries	Runners	Ave Runners	Attendance	Ave Attendance
AINTREE	7	0	45	1,353	620	13.8	178,522	25,503
ASCOT	20	0	125	4,516	1,525	12.2	538,592	26,930
AYR	30	1	206	5,477	2,061	10.0	101,814	3,394
BANGOR-ON-DEE	12	2	80	2,167	767	9.6	46,049	3,837
BATH	19	0	121	3,276	1,367	11.3	56,151	2,955
BEVERLEY	18	1	119	3,088	1,267	10.6	84,856	4,714
BRIGHTON	19	1	121	2,634	1,140	9.4	36,113	1,901
CARLISLE	19	2	125	3,479	1,305	10.4	55,736	2,933
CARTMEL	6	0	37	1,052	363	9.8	59,889	9,982
CATTERICK BRIDGE	25	2	170	4,335	1,950	11.5	51,683	2,067
CHELtenham	15	1	97	3,563	1,328	13.7	401,642	26,776
CHEPSTOW	27	3	176	5,247	1,969	11.2	94,090	3,485
CHESTER	12	0	73	1,734	678	9.3	234,162	19,514
EPSOM DOWNS	8	0	51	1,761	501	9.8	118,366	14,796
EXETER	17	0	111	3,004	1,136	10.2	35,125	2,066
FAKENHAM	10	1	66	1,394	578	8.8	28,078	2,808
FOLKESTONE	22	1	144	3,500	1,365	9.5	33,658	1,530
FONTWELL PARK	22	1	146	3,410	1,344	9.2	57,442	2,611
GOODWOOD	20	0	138	3,828	1,451	10.5	202,228	10,111
HAMILTON PARK	17	0	108	2,457	925	8.6	68,775	4,046
HAYDOCK PARK	30	1	198	6,092	2,000	10.1	210,191	7,006
HEREFORD	17	1	119	3,951	1,450	12.2	29,449	1,732
HEXHAM	12	2	81	2,161	851	10.5	24,353	2,029
HUNTINGDON	16	2	106	3,185	1,176	11.1	41,340	2,584
KELSO	12	2	81	2,161	885	10.9	35,626	2,969
KEMPTON PARK	59	0	377	8,812	4,099	10.9	145,338	2,463
LEICESTER	30	2	193	5,797	1,931	10.0	41,601	1,387
LINGFIELD PARK	95	2	669	14,974	6,947	10.4	145,894	1,536
LUDLOW	15	1	105	2,591	1,161	11.1	28,793	1,920
MARKET RASEN	21	0	144	3,774	1,385	9.6	74,359	3,541
MUSSELBURGH	26	0	172	3,950	1,785	10.4	70,042	2,694
NEWBURY	27	2	191	5,745	2,259	11.8	201,422	7,460
NEWCASTLE	22	4	146	4,286	1,636	11.2	86,487	3,931
NEWMARKET	37	0	264	7,804	2,954	11.2	352,990	9,540
NEWTON ABBOT	16	2	99	2,416	894	9.0	47,230	2,952
NOTTINGHAM	20	0	140	4,957	1,655	11.8	38,125	1,906
PERTH	12	0	78	2,312	794	10.2	54,089	4,507
PLUMPTON	14	2	95	2,256	879	9.3	36,943	2,639
PONTEFRACT	16	0	108	3,038	1,144	10.6	89,121	5,570
REDCAR	17	1	115	3,873	1,351	11.7	57,900	3,406
RIPON	14	0	89	2,265	957	10.8	73,819	5,273
SALISBURY	13	1	88	2,356	924	10.5	49,152	3,781
SANDOWN PARK	27	0	170	4,524	1,613	9.5	157,950	5,850
SEDFIELD	19	1	123	3,200	1,335	10.9	31,472	1,656
SOUTHWELL	77	1	520	10,781	5,511	10.6	74,364	966
STRATFORD-ON-AVON	15	0	99	2,529	1,010	10.2	54,348	3,623
TAUNTON	13	2	89	2,352	941	10.6	25,525	1,963
THIRSK	13	0	81	2,533	903	11.1	62,250	4,788
TOWCESTER	17	0	109	3,237	1,214	11.1	67,794	3,988
UTTOXETER	22	3	144	4,665	1,543	10.7	125,220	5,692
WARWICK	23	1	159	5,010	1,726	10.9	52,453	2,281
WETHERBY	17	1	114	2,775	1,052	9.2	85,936	5,055
WINCANTON	16	0	107	2,607	1,080	10.1	56,107	3,507
WINDSOR	27	0	168	4,953	1,940	11.5	123,276	4,566
WOLVERHAMPTON	111	0	743	17,107	7,919	10.7	86,070	775
WORCESTER	21	0	141	4,260	1,463	10.4	46,599	2,219
YARMOUTH	21	1	136	3,596	1,380	10.1	60,624	2,887
YORK	17	0	114	3,535	1,223	10.7	336,720	19,807
<b>TOTAL</b>	<b>1,342</b>	<b>51</b>	<b>8,934</b>	<b>237,695</b>	<b>94,610</b>	<b>10.6</b>	<b>5,863,943</b>	<b>4,370</b>

## Notes

Mixed attendances are included with the Flat figures.

No fixtures were held at Doncaster in 2006, due to re-development work being carried out.

No fixtures were staged at Great Leighs in 2006, as the opening of the racecourse had been delayed.

# Racecourse Activities

## 2006

### All Racing

#### Notes

##### AYR

- a) 1 replacement fixture
- b) 1 steeple chase, 2 hurdle races and 1 NHF race abandoned (course evacuated due to nearby fire)

##### BATH

- a) 4 races abandoned (fog)

##### BRIGHTON

- a) 1 additional race programmed

##### CARLISLE

- a) 1 fixture normally a Kempton fixture (Kempton being re-developed)

##### CATTERICK BRIDGE

- a) 1 additional race programmed

##### CHELTENHAM

- a) Challow Novices' Hurdle transferred from Newbury 29/12/05

##### CHEPSTOW

- a) 1 race abandoned (fading light) after meeting had been delayed

##### FAKENHAM

- a) 1 replacement fixture
- b) 1 fixture transferred from Doncaster

##### FOLKESTONE

- a) 1 fixture transferred from Doncaster
- b) 1 additional hurdle race programmed

##### FONTWELL PARK

- a) 1 replacement fixture

##### HAYDOCK PARK

- a) 1 fixture transferred from Epsom Downs
- b) 1 fixture normally a Kempton fixture (Kempton being re-developed) - abandoned
- c) 1 additional race programmed

##### HEREFORD

- a) 2 replacement fixtures
- b) 1 additional hurdle race programmed

##### KELSO

- a) 1 additional fixture
- b) 1 additional steeple chase and 1 additional NHF race programmed

##### KEMPTON PARK

- a) 54 All Weather Track fixtures
- b) 3 fixtures transferred from Great Leighs
- c) 2 fixtures transferred from Epsom Downs
- d) 3 races abandoned (fog)

##### LINGFIELD PARK

- a) 67 All Weather Track fixtures, including 2 fixtures where Turf races were transferred to AWT
- b) 6 fixtures transferred from Great Leighs
- c) 6 fixtures transferred from Doncaster, 1 Jump fixture of which was abandoned and replaced with an additional Mixed (AWT) fixture
- d) 1 fixture transferred from Windsor
- e) 1 fixture transferred from York
- f) 2 fixtures normally Ascot fixtures (Ascot being re-developed)
- g) Game Spirit Steeple Chase transferred from Newbury
- h) 1 race abandoned - security alert

##### MARKET RASEN

- a) 1 additional hurdle race programmed
- b) 3 steeple chases abandoned (waterlogging) and 2 hurdle races divided to produce a 6-race card

##### MUSSELBURGH

- a) 4 races abandoned (unsafe ground conditions)

##### NEWBURY

- a) Staged the Racing Post Trophy (from Doncaster)

##### REDCAR

- a) 1 fixture transferred from Doncaster

##### SALISBURY

- a) 1 additional race programmed

##### SANDOWN PARK

- a) 2 fixtures normally Kempton fixtures (Kempton being re-developed)
- b) Cleeve Hurdle re-scheduled from Cheltenham and replacement race for Victor Chandler Chase programmed

##### SOUTHWELL

- a) 63 All Weather Track fixtures, including 1 fixture where Turf races were transferred to AWT
- b) 7 fixtures transferred from Doncaster (1 of which was abandoned)
- c) 2 fixtures transferred from Great Leighs (1 of which had previously been transferred from Newbury)
- d) 1 fixture transferred from Lingfield Park
- e) 1 fixture transferred from Newbury
- f) 1 replacement fixture
- g) 3 races abandoned (fog)

##### THIRSK

- a) 5 races abandoned (waterlogged)

##### UTTOXETER

- a) 1 replacement fixture
- b) 1 steeple chase and 1 NHF race abandoned (insufficient medical cover following serious accident)
- c) 2 steeple chases abandoned (waterlogged) and 2 hurdle races divided

##### WARWICK

- a) 1 fixture transferred from Redcar

##### WETHERBY

- a) 1 replacement fixture
- b) 1 additional steeple chase programmed

# Racecourse Activities 2006 All Racing

## Notes (continued)

### WINCANTON

- a) 1 fixture normally Kempton fixture (Kempton being re-developed)
- b) Cotswold Chase re-scheduled from Cheltenham
- c) Kingmaker Novices' Chase transferred from Warwick  
(replacing existing Novices' Chase)

### WINDSOR

- a) 3 fixtures transferred from Doncaster
- b) 1 race abandoned (slippery bend)

### WOLVERHAMPTON

- a) 111 All Weather Track fixtures
- b) 2 additional fixtures
- c) 12 fixtures transferred from Great Leighs
- d) 3 fixtures transferred from Doncaster
- e) 1 fixture transferred from Lingfield Park
- f) 1 fixture transferred from York
- g) On 2 occasions, 4 races were transferred from Great Leighs  
to produce a 10-race card
- h) 2 races abandoned (fog)

### YORK

- a) 4 fixtures transferred from Doncaster

## Racecourse Activities

### Monthly Attendance Figures

	2002			2003			2004			2005			2006		
	Flat	Jump	Total	Flat	Jump	Total	Flat	Jump	Total	Flat	Jump	Total	Flat	Jump	Total
JAN	27,645	102,035	129,680	28,038	88,896	116,934	26,811	134,733	161,544	24,004	151,650	175,654	25,576	128,522	154,098
FEB	22,946	112,678	135,624	27,517	117,268	144,785	33,399	136,497	169,896	28,194	128,262	156,456	25,406	119,640	145,046
MAR	52,761	346,664	399,425	70,306	366,125	436,431	56,818	348,913	405,731	58,087	419,170	477,257	45,366	346,468	391,834
APR	152,532	327,969	480,501	176,977	334,248	511,225	214,279	344,782	559,061	207,002	330,723	537,725	175,395	330,139	505,534
MAY	404,042	151,681	555,723	464,997	200,328	665,325	483,700	209,476	693,176	452,623	185,487	638,110	428,330	184,242	612,572
JUN	833,180	124,985	958,165	896,758	90,514	987,272	861,826	85,346	947,172	786,121	88,569	874,690	790,998	88,632	879,630
JUL	721,775	58,367	780,142	797,111	62,573	859,684	859,730	69,463	929,193	860,126	78,826	938,952	786,976	92,503	879,479
AUG	677,966	116,474	794,440	730,466	112,754	843,220	646,667	102,916	749,583	626,662	104,910	731,572	744,194	102,252	846,446
SEP	351,019	60,048	411,067	380,245	58,957	439,202	403,815	61,257	465,072	373,446	57,293	430,739	387,401	63,144	450,545
OCT	202,975	132,214	335,189	218,980	147,794	366,774	202,220	172,962	375,182	206,907	167,614	374,521	167,680	177,970	345,650
NOV	50,540	255,702	306,242	51,193	287,941	339,134	44,202	263,810	308,012	41,478	240,620	282,098	41,050	274,246	315,296
DEC	31,020	240,540	271,560	27,650	281,845	309,495	40,041	244,854	284,895	39,917	239,822	279,739	52,863	284,950	337,813
<b>TOTAL</b>	<b>3,528,401</b>	<b>2,029,357</b>	<b>5,557,758</b>	<b>3,870,238</b>	<b>2,149,243</b>	<b>6,019,481</b>	<b>3,873,508</b>	<b>2,175,009</b>	<b>6,048,517</b>	<b>3,704,567</b>	<b>2,192,946</b>	<b>5,897,513</b>	<b>3,671,235</b>	<b>2,192,708</b>	<b>5,863,943</b>

**Notes**

Mixed attendances are included with the Flat figures.

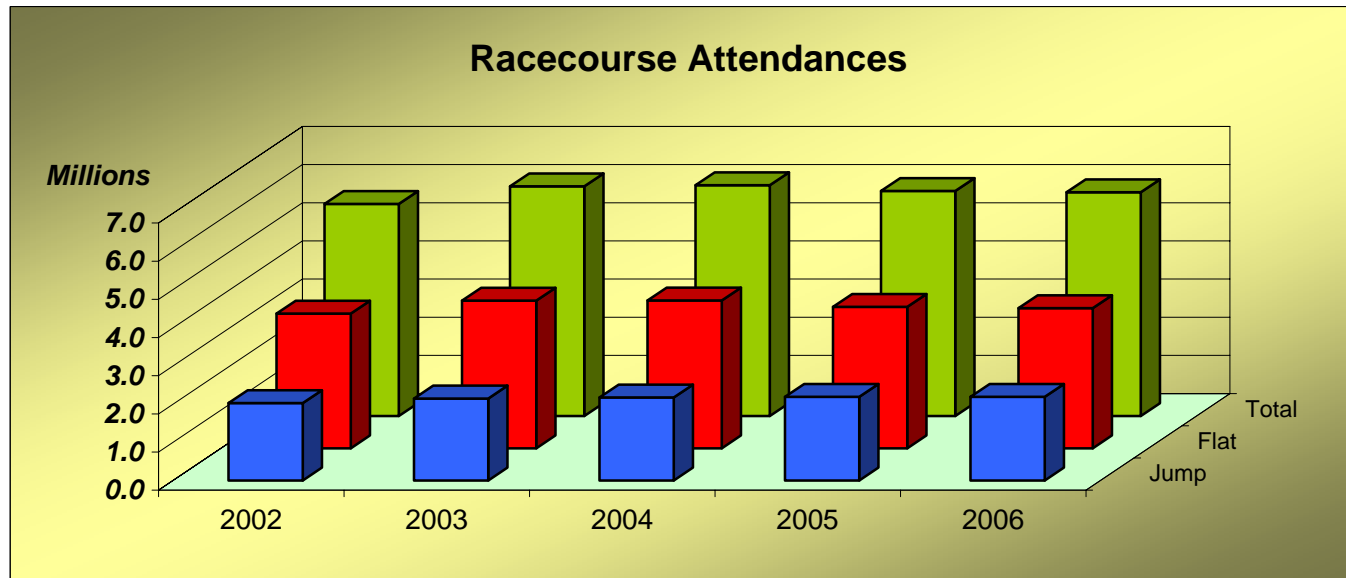
## Racecourse Activities

### Daily Spread of Public Attendances

	2002			2003			2004			2005			2006		
	Flat	Jump	Total	Flat	Jump	Total	Flat	Jump	Total	Flat	Jump	Total	Flat	Jump	Total
MON	219,798	85,226	305,024	249,188	108,423	357,611	258,385	75,920	334,305	258,652	62,080	320,732	236,006	70,586	306,592
TUE	242,485	165,617	408,102	266,753	162,159	428,912	276,799	189,162	465,961	273,282	166,286	439,568	276,322	174,759	451,081
WED	477,216	238,024	715,240	500,663	265,334	765,997	439,362	270,413	709,775	394,925	231,013	625,938	397,700	246,603	644,303
THU	417,074	243,098	660,172	493,282	240,847	734,129	466,306	274,914	741,220	433,515	265,269	698,784	434,057	263,150	697,207
FRI	643,493	307,322	950,815	681,792	252,660	934,452	689,105	250,552	939,657	658,007	327,306	985,313	705,724	352,772	1,058,496
SAT	1,125,133	665,246	1,790,379	1,241,840	700,944	1,942,784	1,303,597	623,206	1,926,803	1,281,328	631,612	1,912,940	1,265,253	608,839	1,874,092
SUN	275,231	120,379	395,610	309,847	188,636	498,483	323,822	379,707	703,529	288,003	334,668	622,671	270,894	332,934	603,828
B/HOL	127,971	204,445	332,416	126,873	230,240	357,113	116,132	111,135	227,267	116,855	174,712	291,567	85,279	143,065	228,344
<b>TOTAL</b>	<b>3,528,401</b>	<b>2,029,357</b>	<b>5,557,758</b>	<b>3,870,238</b>	<b>2,149,243</b>	<b>6,019,481</b>	<b>3,873,508</b>	<b>2,175,009</b>	<b>6,048,517</b>	<b>3,704,567</b>	<b>2,192,946</b>	<b>5,897,513</b>	<b>3,671,235</b>	<b>2,192,708</b>	<b>5,863,943</b>

**Notes**

Mixed attendances are included with the Flat figures.



# **SECTION F**

## **HORSERACE BETTING AND LEVY**

**TABLE 1**

### **Levy Board Income and Expenditure (Financial Years)**

#### **The Levy and Levy Board Income**

The total Horserace Betting Levy Board income in the last 5 financial years broken down into:

- a) From Bookmakers
- b) From Totalisator Board (tote)
- c) Other Income (Net Interest)
- d) Total Income

#### **Allocation of Levy: Levy Board Expenditure**

An analysis of the expenditure of the Horserace Betting Levy Board.

## Betting and Levy Board Statistics

### Levy Board Income and Expenditure - Financial Years <sup>(a)</sup>

	2001-2002 £ Thousand	2002-2003 £ Thousand	2003-2004 £ Thousand	2004-2005 £ Thousand	2005-2006 £ Thousand
<b>THE LEVY AND LEVY BOARD INCOME</b>					
Bookmakers	65,246	73,426	101,045	100,163	88,917
Totalisator Board (tote)	5,894	5,415	8,682	8,309	8,196
Other Levy Board Income (b)	516	604	511	1,636	1,735
<b>TOTAL INCOME</b>	<b>71,656</b>	<b>79,445</b>	<b>110,238</b>	<b>110,108</b>	<b>98,848</b>
<b>ALLOCATION OF LEVY: LEVY BOARD EXPENDITURE</b>					
Prize Money	35,687	44,168	43,608	59,449	64,019
Integrity Services	18,023	19,541	22,734	16,767	18,214
Racecourses	10,798	9,213	9,204	10,227	9,614
Training	427	1,038	762	798	874
Other Improvement of Horseracing	3,801	3,453	2,261	748	-161
Assistance To Breeding	1,555	2,211	1,975	3,370	3,952
Veterinary Science and Education	1,448	1,701	1,406	1,393	3,178
Levy Board Administration	2,994	2,966	3,386	3,296	3,606
Bookmakers' Committee	229	264	342	180	211
<b>TOTAL EXPENDITURE</b>	<b>74,962</b>	<b>84,555</b>	<b>85,678</b>	<b>96,228</b>	<b>103,507</b>
Retail Price Index 2001-2002 = 100	100	102	105	108	111

Sources: Levy Board Annual Reports and Central Statistics Office (for Retail Price Index)

**Notes**

(a) Financial year April 1st to March 31st Levy Period

(b) Net Interest

# **SECTION G**

## **POINT TO POINT RACING**

### **TABLE 1**

#### **Fixture Statistics**

An analysis of the number of Courses, Meetings, Abandonments, Postponements and Re-Arrangements each season for the last 5 years.

### **TABLE 2**

#### **Point to Point Horse and Race Statistics**

##### **Point to Point by Race Type**

An analysis of the Number of Races, Number of Runners and Average Number of Runners per Race for each type of Race.

#### **All Races**

Totals for the season of:

- a) Number of Registered Hunters' Certificates
- b) Number of Races Run
- c) Number of Entries
- d) Number of Runners
- e) Average Number of Runners per Race



## Point to Point Racing

### Number of Courses, Meetings and Abandonments

	2002	2003	2004	2005	2006
No. of Scheduled Meetings	209	208	209	210	209
No. of Actual Meetings	205	201	203	202	198
No. of Meetings Abandoned	4	7	6	8	11
No. of Meetings Postponed	16	6	7	5	12
No. of Meetings Re-Arranged				5	3
No. of Mid-Week Fixtures (exc. Bank Holidays)	4	4	4	3	3
Duration of Season in Weeks	23	23	23	23	24
Total No. of Courses	119	119	117	117	119
No. of Courses with 1 Fixture	61	62	59	57	60
No. of Courses with 2 Fixtures	34	35	35	38	37
No. of Courses with 3 Fixtures	19	16	17	16	15
No. of Courses with 4 Fixtures	4	4	4	4	5
No. of Courses with 5 or more Fixtures	1	2	2	2	2

**Notes**

Figures for 2006 do not include fixtures held in December 2006. These fixtures will be included in statistics for the 2006/7 season.

## Point to Point Racing

### Number of Races and Runners by Type of Race

2006

Type of Race	No. of Races	No. of Runners	Average No. of Runners Per Race
Club Members	95	788	8.3
Confined	116	979	8.4
Hunt Members	146	659	4.5
Intermediate	88	624	7.1
Ladies Open	158	1,058	6.7
Mens Open	161	1,081	6.7
Mixed Open	36	285	7.9
Club Members Maiden	27	275	10.2
Confined Maiden	42	434	10.3
Open Maiden	282	2,796	9.9
2m4f Open Maiden	70	689	9.8
Restricted	205	1,970	9.6

No. of Registered Hunters' Certificates:	3,841
Total No. of Races:	1,426
Total No. of Entries*:	30,212
Total No. of Runners:	11,638
Average No. of Runners per Race:	8.2

\* Not including Entries for Abandoned Meetings

#### Notes

Figures for 2006 do not include races taking place in December 2006. These races will be included in statistics for the 2006/7 season.

# SECTION H

## STABLE EMPLOYEES

**TABLE 1**

1. Total Number of Persons on File
2. Number in Full Time Current Employment with Licensed Trainers
3. Number in Full Time Current Employment with Permitted Trainers
4. Total Number in Full Time Current Employment
5. Number in Part Time Current Employment with Licensed Trainers
6. Number in Part Time Current Employment with Permitted Trainers
7. Total Number in Part Time Current Employment

MALE AND FEMALE ARE SHOWN SEPARATELY

These figures exclude those people who are registered as Self-Employed.

**TABLE 2**

### **Totals by Job Category**

The number of Stable Employees broken down by type of job.

MALE AND FEMALE ARE SHOWN SEPARATELY

**TABLE 3**

### **Totals by Age Group**

The number of Stable Employees broken down by age group.

## Stable Employees

### Number of People Employed Full and Part Time With Licensed and Permitted Trainers

	2002		2003		2004		2005		2006	
	Male	Female	Male	Female	Male	Female	Male	Female	Male	Female
Total on File	3,193	2,857	3,259	2,891	3,307	2,922	3,448	3,011	3,563	3,089
Employed Full Time - with Licensed Trainers	2,261	1,567	2,278	1,649	2,302	1,656	2,458	1,668	2,518	1,691
Employed Full Time - with Permitted Trainers	39	60	38	55	29	48	26	52	29	56
<b>Employed Full Time - TOTAL</b>	<b>2,300</b>	<b>1,627</b>	<b>2,316</b>	<b>1,704</b>	<b>2,331</b>	<b>1,704</b>	<b>2,484</b>	<b>1,720</b>	<b>2,547</b>	<b>1,747</b>
Employed Part Time - with Licensed Trainers	774	1,089	836	1,050	886	1,093	865	1,154	901	1,189
Employed Part Time - with Permitted Trainers	119	141	107	137	90	125	99	137	115	153
<b>Employed Part Time - TOTAL</b>	<b>893</b>	<b>1,230</b>	<b>943</b>	<b>1,187</b>	<b>976</b>	<b>1,218</b>	<b>964</b>	<b>1,291</b>	<b>1,016</b>	<b>1,342</b>

**Notes**

The above figures exclude those people registered as Self-Employed.

## Stable Employees

### Distribution by Category of Job

	2002		2003		2004		2005		2006	
	Male	Female	Male	Female	Male	Female	Male	Female	Male	Female
Assistant Trainer	299	245	292	254	301	253	308	263	288	274
Head Lad	211	62	210	74	203	84	214	90	197	94
Travelling Head Lad	169	50	169	57	167	68	176	63	169	74
Stable Lad/Lass	1,378	1,551	1,436	1,567	1,445	1,565	1,577	1,642	1,625	1,683
Trainee Stable Lad/Lass	71	86	74	105	62	96	52	85	77	96
Apprentice/Conditional Jockey	146	22	155	17	160	19	163	22	208	31
Box Driver	151	25	163	24	159	26	166	24	168	24
Secretary	25	290	26	298	27	305	31	299	30	311
Pupil Under Training	113	117	115	90	115	85	98	93	98	83
Work Rider	289	343	308	328	321	340	339	360	391	385
Gallopman	69	0	68	0	72	1	71	1	71	0
Yardman	293	62	291	69	302	79	330	85	347	101
Feedman	11	2	12	3	9	4	9	3	9	6
Hackman	6	4	5	6	6	10	5	10	5	14
Blacksmith	39	1	37	0	34	0	36	1	36	1
Hostel Employee	4	24	1	24	4	22	2	23	2	20
Other Duties	223	194	232	198	267	222	249	236	276	235
<b>TOTAL</b>	<b>3,497</b>	<b>3,078</b>	<b>3,594</b>	<b>3,114</b>	<b>3,654</b>	<b>3,179</b>	<b>3,826</b>	<b>3,300</b>	<b>3,997</b>	<b>3,432</b>

**Stable Employees**  
**Distribution by Age Group**

	<b>2002</b>	<b>2003</b>	<b>2004</b>	<b>2005</b>	<b>2006</b>
16 and under	148	147	153	150	149
17	183	202	178	177	205
18	238	210	236	198	216
19	247	238	213	260	216
20-24	1,145	1,240	1,263	1,272	1,382
25-29	833	850	932	1,052	1,121
30-34	797	791	748	756	759
35-39	730	708	733	756	775
40-44	627	630	648	687	701
45-49	500	521	514	538	565
50-54	359	367	387	402	447
55-59	328	311	294	330	331
60-64	208	244	270	266	271
65 and over	232	249	264	282	291
<b>TOTAL</b>	<b>6,575</b>	<b>6,708</b>	<b>6,833</b>	<b>7,126</b>	<b>7,429</b>