

# BRITISH RACING STATISTICS 2009

## INTRODUCTION

The specification details of all tables included in British Racing Statistics 2009 are provided at the front of each section.

These statistics are only responsible for providing basic information. Any comparisons of figures and expressions of percentages, trends, etc. must be the responsibility of the user of these tables.

B.H.A. Editorial Department,  
Weatherbys Ltd,  
Sanders Road,  
Wellingborough,  
Northants,  
NN8 4BX

Tel: 01933 440077  
Fax: 01933 304787  
Email: [editorial@weatherbys.co.uk](mailto:editorial@weatherbys.co.uk)

# BRITISH RACING STATISTICS 2009

## TABLE OF CONTENTS

LEADING PERFORMERS	
SECTION A	BREEDING
SECTION B	OWNERSHIP
SECTION C	TRAINING AND RIDING
SECTION D	FIXTURES, RACES AND PRIZE MONEY
SECTION E	RACECOURSES
SECTION F	HORSERACE BETTING AND LEVY
SECTION G	POINT TO POINT RACING
SECTION H	STABLE EMPLOYEES

The specification details of all tables are included at the beginning of each section.

## LEADING PERFORMERS

BHA Jump Order of Merit – Overall Leaderboard  
 Group 1 Flat Race Winners  
 Major Jump Race Winners  
 Leading Horses – Flat  
 Leading Horses – Jump  
 Leading Jockeys – Flat  
 Leading Jockeys – Jump  
 Leading Trainers – Flat  
 Leading Trainers – Jump

## SECTION A – BREEDING

**Table**

Exported Horses	A1
Exported Horses - Destination	A2
Foals	A1
Mares	A1
Names Registered	A1
Stallions	A1

## SECTION B – OWNERSHIP

**Table**

Business Partnerships Registered	B1
Colours Registered	B1
Companies Registered	B1
Joint Ownership Names Registered	B1
Joint Ownerships Registered	B1
Leases Registered	B1
Owners Registered	B1
Ownership Statistics – Number of Owners by the Number of Horses They Own	B2
Ownership Statistics – Number of Owners with a Horse in Training by Type of Ownership	B3
Racing Partnerships Registered	B1

**SECTION C – TRAINING AND RIDING****Table**

Horses in Training – All Horses	C2
Horses in Training – Dual-Purpose Horses	C2
Horses in Training – Flat-Only Horses	C2
Horses in Training – Hunter Chasers	C2
Horses in Training – Jump-Only Horses	C2
Horses in Training – Type of Ownership	C3
Permit Holders	C1
Riders – Amateur	C1
Riders – Professional by Type of Licence Held	C1
Trainers – Size of Yards – All Trainers	C4
Trainers – Size of Yards – Licensed Trainers	C4
Trainers – Size of Yards – Permit Holders & Hunter Trainers	C4
Trainers – Type of Licence Held	C1

**SECTION D – FIXTURES, RACES AND PRIZE MONEY****Table**

Abandoned Fixtures	D1
Appearance Money Payments	D16
Balloting Out and Eliminations	D5
Divided Races	D5
Eliminations – Flat – by Race Type	D6
Eliminations – Hurdle Races & NHF Races – by Distance	D8
Eliminations – Jump – by Race Type	D7
Eliminations – Steeple Chases – by Distance	D9
Entries – Flat – by Race Type	D6
Entries – Hurdle Races & NHF Races – by Distance	D8
Entries – Jump – by Race Type	D7
Entries – Steeple Chases – by Distance	D9
Evening Fixtures	D1
Field Sizes – Flat	D2, D4
Field Sizes – Hurdle Races & NHF Races	D3, D4
Field Sizes – Jump	D4
Field Sizes – Steeple Chases	D3, D4
Fixtures	D1
Owners' Premium Payments	D16
Prize Money – Flat – by Race Type	D6
Prize Money – Flat – by Racecourse	D13
Prize Money – Flat – by Source	D12
Prize Money – Flat – by Source for Flat Pattern Races	D10
Prize Money – Hurdle Races & NHF Races – by Distance	D8
Prize Money – Jump – by Race Type	D7
Prize Money – Jump – by Racecourse	D13
Prize Money – Jump – by Source	D12
Prize Money – Steeple Chases – by Distance	D9
Prize Money – Total – by Racecourse	D13
Prize Money – Total – by Source	D11, D12
Prize Money – Won Abroad by British-Trained Horses	D15
Prize Money – Won in Great Britain by Overseas-Trained Horses	D15
Races – Flat – by Race Type	D6
Races – Hurdle Races & NHF Races – by Distance	D8
Races – Jump – by Race Type	D7
Races – Steeple Chases – by Distance	D9
Runners – Different Horses That Ran	D5
Runners – Flat – by Race Type	D6
Runners – Hurdle Races & NHF Races – by Distance	D8
Runners – Jump – by Race Type	D7
Runners – Steeple Chases – by Distance	D9
Sponsored Number Cloth Income	D14
Walkovers – Flat	D2, D4
Walkovers – Hurdle Races & NHF Races	D3, D4
Walkovers – Jump	D4
Walkovers – Steeple Chases	D3, D4
Winners – Individual Different Horses	D5

## SECTION E – RACECOURSES

Table

Abandoned Fixtures – by Course - All	E1
Abandoned Fixtures – by Course - Flat	E1
Abandoned Fixtures – by Course - Jump	E1
Attendances – by Course - All	E1
Attendances – by Course - Flat	E1
Attendances – by Course - Jump	E1
Attendances – by Day of the Week	E3
Attendances – by Month	E2
Attendances – Total	E1, E2, E3
Entries – by Course - All	E1
Entries – by Course - Flat	E1
Entries – by Course - Jump	E1
Fixtures Held – by Course - All	E1
Fixtures Held – by Course - Flat	E1
Fixtures Held – by Course - Jump	E1
Races Run – by Course - All	E1
Races Run – by Course - Flat	E1
Races Run – by Course - Jump	E1
Runners – by Course - All	E1
Runners – by Course - Flat	E1
Runners – by Course - Jump	E1

## SECTION F – HORSERACE BETTING AND LEVY

Table

Levy Board – Income	F1
Levy Board – Expenditure	F1

## SECTION G – POINT TO POINT RACING

Table

Abandonments	G1
Courses	G1
Entries – Total	G2
Fixtures	G1
Hunters' Certificates	G2
Postponements	G1
Races – by Race Type	G2
Races – Total	G2
Re-Arrangements	G1
Runners – by Race Type	G2
Runners – Total	G2

## SECTION H – STABLE EMPLOYEES

Table

Age Groups	H3
Employed Full Time	H1
Employed Part Time	H1
Employed with Licensed Trainers	H1
Employed with Permitted Trainers	H1
Job Category	H2
Total	H1

# BRITISH RACING STATISTICS 2009

## INTRODUCTION

The specification details of all tables included in British Racing Statistics 2009 are provided at the front of each section.

These statistics are only responsible for providing basic information. Any comparisons of figures and expressions of percentages, trends, etc. must be the responsibility of the user of these tables.



B.H.A. Editorial Department,  
Weatherbys Ltd,  
Sanders Road,  
Wellingborough,  
Northants,  
NN8 4BX

Tel: 01933 440077  
Fax: 01933 304787  
Email: [editorial@weatherbys.co.uk](mailto:editorial@weatherbys.co.uk)

# BRITISH RACING STATISTICS 2009

## TABLE OF CONTENTS

LEADING PERFORMERS	
SECTION A	BREEDING
SECTION B	OWNERSHIP
SECTION C	TRAINING AND RIDING
SECTION D	FIXTURES, RACES AND PRIZE MONEY
SECTION E	RACECOURSES
SECTION F	HORSERACE BETTING AND LEVY
SECTION G	POINT TO POINT RACING
SECTION H	STABLE EMPLOYEES
RACECOURSES MAP & DIRECTORY	

The specification details of all tables are included at the beginning of each section.

## LEADING PERFORMERS

BHA Jump Order of Merit – Overall Leaderboard  
Group 1 Flat Race Winners  
Major Jump Race Winners  
Leading Horses – Flat  
Leading Horses – Jump  
Leading Jockeys – Flat  
Leading Jockeys – Jump  
Leading Trainers – Flat  
Leading Trainers – Jump

## SECTION A – BREEDING

	Table
Exported Horses	A1
Exported Horses - Destination	A2
Foals	A1
Mares	A1
Names Registered	A1
Stallions	A1

## SECTION B – OWNERSHIP

	Table
Business Partnerships Registered	B1
Colours Registered	B1
Companies Registered	B1
Joint Ownership Names Registered	B1
Joint Ownerships Registered	B1
Leases Registered	B1
Owners Registered	B1
Ownership Statistics – Number of Owners by the Number of Horses They Own	B2
Ownership Statistics – Number of Owners with a Horse in Training by Type of Ownership	B3
Racing Partnerships Registered	B1

## SECTION C – TRAINING AND RIDING

### Table

Horses in Training – All Horses	C2
Horses in Training – Dual-Purpose Horses	C2
Horses in Training – Flat-Only Horses	C2
Horses in Training – Hunter Chasers	C2
Horses in Training – Jump-Only Horses	C2
Horses in Training – Type of Ownership	C3
Permit Holders	C1
Riders – Amateur	C1
Riders – Professional by Type of Licence Held	C1
Trainers – Size of Yards – All Trainers	C4
Trainers – Size of Yards – Licensed Trainers	C4
Trainers – Size of Yards – Permit Holders & Hunter Trainers	C4
Trainers – Type of Licence Held	C1

## SECTION D – FIXTURES, RACES AND PRIZE MONEY

### Table

Abandoned Fixtures	D1
Appearance Money Payments	D16
Balloting Out and Eliminations	D5
Divided Races	D5
Eliminations – Flat – by Race Type	D6
Eliminations – Hurdle Races & NHF Races – by Distance	D8
Eliminations – Jump – by Race Type	D7
Eliminations – Steeple Chases – by Distance	D9
Entries – Flat – by Race Type	D6
Entries – Hurdle Races & NHF Races – by Distance	D8
Entries – Jump – by Race Type	D7
Entries – Steeple Chases – by Distance	D9
Evening Fixtures	D1
Field Sizes – Flat	D2, D4
Field Sizes – Hurdle Races & NHF Races	D3, D4
Field Sizes – Jump	D4
Field Sizes – Steeple Chases	D3, D4
Fixtures	D1
Owners' Premium Payments	D16
Prize Money – Flat – by Race Type	D6
Prize Money – Flat – by Racecourse	D13
Prize Money – Flat – by Source	D12
Prize Money – Flat – by Source for Flat Pattern Races	D10
Prize Money – Hurdle Races & NHF Races – by Distance	D8
Prize Money – Jump – by Race Type	D7
Prize Money – Jump – by Racecourse	D13
Prize Money – Jump – by Source	D12
Prize Money – Steeple Chases – by Distance	D9
Prize Money – Total – by Racecourse	D13
Prize Money – Total – by Source	D11, D12
Prize Money – Won Abroad by British-Trained Horses	D15
Prize Money – Won in Great Britain by Overseas-Trained Horses	D15
Races – Flat – by Race Type	D6
Races – Hurdle Races & NHF Races – by Distance	D8
Races – Jump – by Race Type	D7
Races – Steeple Chases – by Distance	D9
Runners – Different Horses That Ran	D5
Runners – Flat – by Race Type	D6
Runners – Hurdle Races & NHF Races – by Distance	D8
Runners – Jump – by Race Type	D7
Runners – Steeple Chases – by Distance	D9
Sponsored Number Cloth Income	D14
Walkovers – Flat	D2, D4
Walkovers – Hurdle Races & NHF Races	D3, D4
Walkovers – Jump	D4
Walkovers – Steeple Chases	D3, D4
Winners – Individual Different Horses	D5

## SECTION E – RACECOURSES

Table

Abandoned Fixtures – by Course - All	E1
Abandoned Fixtures – by Course - Flat	E1
Abandoned Fixtures – by Course - Jump	E1
Attendances – by Course - All	E1
Attendances – by Course - Flat	E1
Attendances – by Course - Jump	E1
Attendances – by Day of the Week	E3
Attendances – by Month	E2
Attendances – Total	E1, E2, E3
Entries – by Course - All	E1
Entries – by Course - Flat	E1
Entries – by Course - Jump	E1
Fixtures Held – by Course - All	E1
Fixtures Held – by Course - Flat	E1
Fixtures Held – by Course - Jump	E1
Races Run – by Course - All	E1
Races Run – by Course - Flat	E1
Races Run – by Course - Jump	E1
Runners – by Course - All	E1
Runners – by Course - Flat	E1
Runners – by Course - Jump	E1

## SECTION F – HORSERACE BETTING AND LEVY

Table

Levy Board – Income	F1
Levy Board – Expenditure	F1

## SECTION G – POINT TO POINT RACING

Table

Abandonments	G1
Courses	G1
Entries – Total	G2
Fixtures	G1
Hunters' Certificates	G2
Postponements	G1
Races – by Race Type	G2
Races – Total	G2
Re-Arrangements	G1
Runners – by Race Type	G2
Runners – Total	G2

## SECTION H – STABLE EMPLOYEES

Table

Age Groups	H3
Employed Full Time	H1
Employed Part Time	H1
Employed with Licensed Trainers	H1
Employed with Permitted Trainers	H1
Job Category	H2
Total	H1

## RACECOURSES MAP & DIRECTORY

Map of British Racecourses
Directory of British Racecourses



# LEADING PERFORMERS

## **BHA Jump Order of Merit**

The Overall leaderboard in the BHB's Jump Order of Merit for the 2008-2009 Jump season.

## **Winners of UK Group 1 Flat Races**

A full list of all the winning horses in UK Group 1 Flat races run during the 2009 Flat Racing season.

## **Winners of Major UK Jump Races**

A full list of all the winning horses in major UK Jump races run during the calendar year of 2009.

## **Leading Horses by Prize Money Won in Great Britain**

The Top 10 Horses during the calendar year, Flat and Jump, in order of Total Prize Money won (Win and Place) in races taking place in Great Britain. The name of the Owner and Trainer of the horse is also shown, along with the single performance that earned the greatest amount of Prize Money.

## **Leading Trainers by Prize Money Won in Great Britain**

The Top 10 Trainers during the calendar year, Flat and Jump, in order of Total Prize Money won (Win and Place) in races taking place in Great Britain. The number of Starters, number of Winners, number of Placed Horses and Strike Rate (percentage of Winners to Runners) is also shown. Total Prize Money is the sum of the Penalty Values of the Races concerned (not the Trainer's percentage). Places are defined as performances for which Prize Money was earned, other than for Winning a Race.

## **Leading Jockeys by Prize Money Won in Great Britain**

The Top 10 Jockeys during the calendar year, Flat and Jump, in order of Total Prize Money won (Win and Place) in races taking place in Great Britain. The number of Rides, number of Winners, number of Placed Horses and Strike Rate (percentage of Winners to Runners) is also shown. Total Prize Money is the sum of the Penalty Values of the Races concerned (not the Jockey's percentage). Places are defined as performances for which Prize Money was earned, other than for Winning a Race.

## BHA Jump Order of Merit - Overall Leaderboard 2008-2009

Place	Horse	Trainer	Points
1	Voy Por Ustedes	Alan King	76
2	Master Minded	Paul Nicholls	60
3	Snoopy Loopy	Peter Bowen	58
4	Mahogany Blaze	Nigel Twiston-Davies	54
5	Chomba Womba	Nicky Henderson	52
6=	Punjabi	Nicky Henderson	50
6=	Big Buck's	Paul Nicholls	50
8=	Exotic Dancer	Jonjo O'Neill	48
8=	Punchestowns	Nicky Henderson	48
10	Tidal Bay	Howard Johnson	44

### Winners of UK Group 1 Flat Races in 2009

Race	Distance	2009 Date	Racecourse	Value	1st Prize	Winner
stanjames.com 2000 Guineas Stakes	1m	02 May 2009	Newmarket	£426,000	£241,840	Sea The Stars (IRE)
stanjames.com 1000 Guineas Stakes	1m	03 May 2009	Newmarket	£400,000	£227,080	Ghanaati (USA)
Juddmonte Lockinge Stakes	1m	16 May 2009	Newbury	£250,000	£141,925	Virtual
Investec Oaks	1m 4f 10y	05 June 2009	Epsom Downs	£350,000	£198,695	Sariska
Investec Coronation Cup	1m 4f 10y	05 June 2009	Epsom Downs	£242,750	£137,809	Ask
Investec Derby	1m 4f 10y	06 June 2009	Epsom Downs	£1,250,000	£709,625	Sea The Stars (IRE)
Queen Anne Stakes	1m	16 June 2009	Royal Ascot	£295,000	£167,472	Paco Boy (IRE)
St James's Palace Stakes	1m	16 June 2009	Royal Ascot	£250,000	£141,925	Mastercraftsman (IRE)
King's Stand Stakes (British Leg of the Global Sprint Challenge)	5f	16 June 2009	Royal Ascot	£300,000	£170,310	Scenic Blast (AUS)
Prince of Wales's Stakes	1m 2f	17 June 2009	Royal Ascot	£450,000	£255,465	Vision d'Etat (FR)
Gold Cup	2m 4f	18 June 2009	Royal Ascot	£250,000	£141,925	Yeats (IRE)
Coronation Stakes	1m	19 June 2009	Royal Ascot	£272,500	£154,698	Ghanaati (USA)
Golden Jubilee Stakes (British Leg of the Global Sprint Challenge)	6f	20 June 2009	Royal Ascot	£490,500	£278,457	Art Connoisseur (IRE)
Coral-Eclipse	1m 2f 7y	04 July 2009	Sandown Park	£500,000	£283,850	Sea The Stars (IRE)
Etihad Airways Falmouth Stakes	1m	08 July 2009	Newmarket	£200,000	£113,540	Goldikova (IRE)
Darley July Cup	6f	10 July 2009	Newmarket	£400,000	£227,080	Fleeting Spirit (IRE)
King George VI and Queen Elizabeth Stakes (Sponsored by Betfair)	1m 4f	25 July 2009	Ascot	£1,000,000	£567,700	Conduit (IRE)
BGC Sussex Stakes	1m	29 July 2009	Goodwood	£300,000	£170,310	Rip Van Winkle (IRE)
Blue Square Nassau Stakes	1m 1f 192y	01 August 2009	Goodwood	£200,000	£113,540	Midday
Juddmonte International Stakes	1m 2f 88y	18 August 2009	York	£600,000	£340,620	Sea The Stars (IRE)
Darley Yorkshire Oaks	1m 4f	20 August 2009	York	£310,000	£175,987	Dar Re Mi
Coolmore Nunthorpe Stakes	5f	21 August 2009	York	£240,000	£136,248	Borderlescott
Betfred Sprint Cup	6f	05 September 2009	Haydock Park	£288,550	£163,810	Regal Parade
Ladbroke's St Leger Stakes	1m 6f 132y	12 September 2009	Doncaster	£540,050	£306,586	Mastery
Queen Elizabeth II Stakes (Sponsored by Sony)	1m	26 September 2009	Ascot	£250,000	£141,925	Rip Van Winkle (IRE)
Meon Valley Stud Fillies' Mile	1m	26 September 2009	Ascot	£218,000	£123,759	Hibaayeb
Shadwell Middle Park Stakes	6f	02 October 2009	Newmarket	£183,400	£104,116	Awzaan
Electrolux Cheveley Park Stakes	6f	02 October 2009	Newmarket	£170,000	£96,509	Special Duty
Kingdom of Bahrain Sun Chariot Stakes	1m	03 October 2009	Newmarket	£200,000	£113,540	Sahpresa (USA)
Emirates Airline Champion Stakes	1m 2f	17 October 2009	Newmarket	£376,500	£213,739	Twice Over
Jumeirah Dewhurst Stakes	7f	17 October 2009	Newmarket	£317,350	£180,160	Beethoven (IRE)
Racing Post Trophy	1m	24 October 2009	Doncaster	£200,000	£113,540	St Nicholas Abbey (IRE)

## Winners of Major UK Jump Races in 2009

Race	Distance	2009 Date	Racecourse	Value	1st Prize	Winner
2008-2009 SEASON						
Blue Square Tolworth Hurdle Race	2m 110y	03 January 2009	Sandown Park	£50,000	£28,505	Abandoned
totesport.com Classic Steeple Chase (A Handicap)	3m 5f	10 January 2009	Warwick	£70,000	£39,907	Abandoned
Victor Chandler Steeple Chase (Registered as The Clarence House Chase)	2m 1f	17 January 2009	Ascot	£140,000	£78,862	Master Minded (FR)
toteswinger Challengers Novices' Steeple Chase (Registered as The Scilly Isles Novices' Steeple Chase)	2m 4f 110y	31 January 2009	Sandown Park	£55,000	£31,724	Herecomesthetruth (IRE)
totesport Trophy Hurdle Race (Handicap)	2m 110y	07 February 2009	Newbury	£150,000	£85,515	Abandoned
Betfair Ascot Steeple Chase	2m 5f 110y	14 February 2009	Ascot	£150,000	£84,495	Voy Por Ustedes (FR)
Blue Square Gold Cup Steeple Chase (Handicap)	3m 4f	14 February 2009	Haydock Park	£115,000	£65,562	Rambling Minster
williamhill.com Dovecote Novices' Hurdle Race	2m	21 February 2009	Kempton Park	£30,000	£17,103	Trenchant
Smurfit Kappa Champion Hurdle Challenge Trophy	2m 110y	10 March 2009	Cheltenham	£370,000	£210,937	Punjabi
Irish Independent Arkle Challenge Trophy Steeple Chase	2m	10 March 2009	Cheltenham	£170,000	£96,917	Forpadydeplasterer (IRE)
williamhill.com Supreme Novices' Hurdle Race	2m 110y	10 March 2009	Cheltenham	£120,000	£68,412	Go Native (IRE)
Seasons Holidays Queen Mother Champion Steeple Chase	2m	11 March 2009	Cheltenham	£320,000	£182,432	Master Minded (FR)
RSA Steeple Chase	3m 110y	11 March 2009	Cheltenham	£170,000	£96,917	Coolidine (IRE)
Ballymore Novices' Hurdle Race (Registered As The Baring Bingham Novices' Hurdle Race)	2m 5f	11 March 2009	Cheltenham	£120,000	£68,412	Mikael D'Haguenet (FR)
Weatherbys Champion Bumper (A Standard Open National Hunt Flat Race)	2m 110y	11 March 2009	Cheltenham	£60,000	£34,206	Dunguib (IRE)
Ryanair Steeple Chase (Registered As The Festival Trophy Steeple Chase)	2m 5f	12 March 2009	Cheltenham	£220,000	£125,422	Imperial Commander (IRE)
Ladbrokes World Hurdle Race	3m	12 March 2009	Cheltenham	£260,000	£148,226	Big Buck's (FR)
totesport Cheltenham Gold Cup Steeple Chase	3m 2f 110y	13 March 2009	Cheltenham	£475,000	£270,798	Kauto Star (FR)
JCB Triumph Hurdle Race	2m 1f	13 March 2009	Cheltenham	£120,000	£68,412	Zaynar (FR)
Albert Bartlett Novices' Hurdle Race (Registered as The Spa Novices' Hurdle Race)	3m	13 March 2009	Cheltenham	£100,000	£57,010	Weapon's Amnesty (IRE)
Matalan Anniversary 4-y-o Novices' Hurdle Race	2m 110y	02 April 2009	Aintree	£130,000	£74,113	Walkon (FR)
John Smith's Melling Steeple Chase	2m 4f	03 April 2009	Aintree	£200,000	£114,020	Voy Por Ustedes (FR)
Citroen Sefton Novices' Hurdle Race	3m 110y	03 April 2009	Aintree	£100,000	£57,010	Ogee
John Smith's Grand National Steeple Chase (Handicap)	4m 4f	04 April 2009	Aintree	£900,000	£506,970	Mon Mome (FR)
John Smith's Aintree Hurdle	2m 4f	04 April 2009	Aintree	£170,000	£96,917	Solwhit (FR)
John Smith's Maghull Novices' Steeple Chase	2m	04 April 2009	Aintree	£125,000	£71,598	Kalahari King (FR)
Coral Scottish Grand National Handicap Steeple Chase	4m 110y	18 April 2009	Ayr	£200,000	£114,020	Hello Bud (IRE)
bet365 Gold Cup Steeple Chase (Handicap)	3m 5f 110y	25 April 2009	Sandown Park	£165,000	£94,067	Hennessy (IRE)
2009-2010 SEASON						
Paddy Power Gold Cup Steeple Chase (A Handicap)	2m 4f 110y	14 November 2009	Cheltenham	£150,000	£85,515	Tranquil Sea (IRE)
Betfair Steeple Chase (Registered as The Lancashire Chase)	3m	21 November 2009	Haydock Park	£200,000	£112,660	Kauto Star (FR)
Hennessy Gold Cup Steeple Chase (Handicap)	3m 2f 110y	28 November 2009	Newbury	£200,000	£114,020	Denman (IRE)
WBX.COM Fighting Fifth Hurdle Race	2m	28 November 2009	Newcastle	£100,000	£56,330	Go Native (IRE)
Keith Prowse Hospitality Tingle Creek Steeple Chase	2m	05 December 2009	Sandown Park	£150,000	£85,515	Twist Magic (FR)
Boylesports.com Gold Cup (A Handicap Steeple Chase)	2m 5f	12 December 2009	Cheltenham	£150,000	£85,515	Poquelin (FR)
William Hill King George VI Steeple Chase	3m	26 December 2009	Kempton Park	£200,000	£114,020	Kauto Star (FR)
williamhill.com Christmas Hurdle Race	2m	26 December 2009	Kempton Park	£100,000	£57,010	Go Native (IRE)
williamhill.com Feltham Novices' Steeple Chase	3m	26 December 2009	Kempton Park	£60,000	£34,809	Long Run (FR)
Coral Welsh National (A Handicap Steeple Chase)	3m 5f 110y	28 December 2009	Chepstow	£100,000	£57,010	Dream Alliance
Coral Future Champions Finale Juvenile Hurdle Race	2m 110y	28 December 2009	Chepstow	£50,000	£28,505	Me Voici (FR)
Racing UK On Virgin 536 Long Walk Hurdle Race	3m 110y	29 December 2009	Newbury (Ascot Abandoned)	£70,000	£39,465	Big Buck's (FR)
Racing UK Free Today On Sky 432 Challow Novices' Hurdle Race	2m 5f	29 December 2009	Newbury	£42,500	£24,229	Reve De Sivola (FR)

**Leading Horses  
Prize Money won in Great Britain**

**Flat - 2009**

<b>Horse</b>	<b>Owner</b>	<b>Trainer</b>	<b>Best Performance</b>	<b>Total Prize Money</b>
1. <b>Sea The Stars (IRE)</b>	Mr Christopher Tsui	John M. Oxx, Ireland	Investec Derby (1st) - Epsom Downs, June 6th	£1,575,935
2. <b>Conduit (IRE)</b>	Ballymacoll Stud	Sir Michael Stoute	King George VI and Queen Elizabeth Stakes (Sponsored by Belfair) (1st) - Ascot, July 25th	£635,538
3. <b>Oasis Dancer (GB)</b>	Mrs M. E. Slade	R. M. Beckett	Tattersalls Timeform Million (1st) - Newmarket, Oct 3rd	£542,760
4. <b>Rip Van Winkle (IRE)</b>	Mrs John Magnier, Mr M. Tabor & Mr D. Smith	A. P. O'Brien, Ireland	Queen Elizabeth II Stakes (1st) - Ascot, Sept 26th	£509,836
5. <b>Ghanaati (USA)</b>	Mr Hamdan Al Maktoum	B. W. Hills	stanjames.com 1000 Guineas Stakes (1st) - Newmarket, May 3rd	£457,128
6. <b>Lillie Langtry (IRE)</b>	Mr M. Tabor, D. Smith & Mrs John Magnier	A. P. O'Brien, Ireland	Tattersalls Timeform Fillies' 800 (1st) - Newmarket, Oct 3rd	£448,424
7. <b>Fleeting Spirit (IRE)</b>	The Searchers	J. Nosedá	Darley July Cup (British Leg of the Global Sprint Challenge) (1st) - Newmarket, July 10th	£353,736
8. <b>Mastery (GB)</b>	Godolphin	Saeed bin Suroor	Ladbrokes St Leger Stakes (1st) - Doncaster, Sept 12th	£349,235
9. <b>Tartan Bearer (IRE)</b>	Ballymacoll Stud	Sir Michael Stoute	King George VI and Queen Elizabeth Stakes (Sponsored by Belfair) (2nd) - Ascot, July 25th	£348,941
10. <b>Sariska (GB)</b>	Lady Bamford	M. L. W. Bell	Investec Oaks (1st) - Epsom Downs, June 5th	£346,347

**Leading Horses  
Prize Money won in Great Britain**

**Jump - 2009**

<b>Horse</b>	<b>Owner</b>	<b>Trainer</b>	<b>Best Performance</b>	<b>Total Prize Money</b>
1. <b>Mon Mome (FR)</b>	Mrs Vida Bingham	Miss Venetia Williams	John Smith's Grand National Steeple Chase (Handicap) (1st) - Aintree, Apr 4th	£511,329
2. <b>Kauto Star (FR)</b>	Mr Clive D. Smith	P. F. Nicholls	totesport Cheltenham Gold Cup Steeple Chase (1st) - Cheltenham, Mar 13th	£497,478
3. <b>Big Buck's (FR)</b>	The Stewart Family	P. F. Nicholls	Ladbroke's World Hurdle Race (1st) - Cheltenham, Mar 12th	£323,201
4. <b>Master Minded (FR)</b>	Mr Clive D. Smith	P. F. Nicholls	Seasons Holidays Queen Mother Champion Steeple Chase (1st) - Cheltenham, Mar 11th	£265,919
5. <b>Voy Por Ustedes (FR)</b>	Sir Robert Ogden	A. King	John Smith's Melling Steeple Chase (1st) - Aintree, Apr 3rd	£251,464
6. <b>Punjabi (GB)</b>	Mr Raymond Tooth	N. J. Henderson	Smurfit Kappa Champion Hurdle Challenge Trophy (1st) - Cheltenham, Mar 10th	£227,515
7. <b>Denman (IRE)</b>	Mr Paul K Barber & Mrs M Findlay	P. F. Nicholls	Hennessy Gold Cup Steeple Chase (Handicap) (1st) - Newbury, Nov 28th	£226,959
8. <b>Comply Or Die (IRE)</b>	Mr D. A. Johnson	D. E. Pipe	John Smith's Grand National Steeple Chase (Handicap) (2nd) - Aintree, Apr 4th	£190,980
9. <b>Madison du Berlais (FR)</b>	Roger Stanley & Yvonne Reynolds II	D. E. Pipe	totesport Bowl Steeple Chase (1st) - Aintree, Apr 2nd	£185,451
10. <b>Go Native (IRE)</b>	Docado Syndicate	N. Meade, Ireland	williamhill.com Supreme Novices' Hurdle Race (1st) - Cheltenham, Mar 10th	£181,752

**Leading Trainers  
Prize Money won in Great Britain**

**Flat - 2009**

<b>Trainer</b>	<b>Number of Starters</b>	<b>Number of Winners</b>	<b>Number of Placed Horses</b>	<b>Strike Rate</b>	<b>Total Prize Money (Win and Place)</b>
1. <b>Sir Michael Stoute</b>	429	99	201	23.1%	£3,421,892
2. <b>A. P. O'Brien, Ireland</b>	78	12	45	15.4%	£2,984,713
3. <b>M. Johnston</b>	1,227	216	480	17.6%	£2,843,943
4. <b>R. Hannon</b>	1,371	188	525	13.7%	£2,814,385
5. <b>Saeed bin Suroor</b>	530	148	239	27.9%	£2,758,262
6. <b>J. H. M. Gosden</b>	516	88	225	17.1%	£2,308,710
7. <b>B. W. Hills</b>	566	88	220	15.5%	£1,951,093
8. <b>R. A. Fahey</b>	1,106	165	422	14.9%	£1,657,129
9. <b>John M. Oxx, Ireland</b>	12	5	5	41.7%	£1,634,280
10. <b>H. R. A. Cecil</b>	324	63	153	19.4%	£1,411,068

**Leading Trainers  
Prize Money won in Great Britain**

**Jump - 2009**

<b>Trainer</b>	<b>Number of Starters</b>	<b>Number of Winners</b>	<b>Number of Placed Horses</b>	<b>Strike Rate</b>	<b>Total Prize Money (Win and Place)</b>
1. <b>P. F. Nicholls</b>	565	129	253	22.8%	£3,419,087
2. <b>N. J. Henderson</b>	475	121	176	25.5%	£1,672,905
3. <b>D. E. Pipe</b>	616	91	167	14.8%	£1,509,515
4. <b>A. King</b>	648	89	283	13.7%	£1,483,666
5. <b>N. A. Twiston-Davies</b>	611	63	248	10.3%	£1,385,312
6. <b>Miss Venetia Williams</b>	386	60	142	15.5%	£1,247,456
7. <b>P. J. Hobbs</b>	572	87	262	15.2%	£1,173,786
8. <b>Jonjo O'Neill</b>	666	113	194	17.0%	£1,141,548
9. <b>Evan Williams</b>	567	73	213	12.9%	£659,786
10. <b>D. McCain Jnr</b>	483	78	175	16.1%	£591,488



**Leading Jockeys  
Prize Money won in Great Britain**

**Flat - 2009**

<b>Jockey</b>	<b>Number of Rides</b>	<b>Number of Winners</b>	<b>Number of Placed Horses</b>	<b>Strike Rate</b>	<b>Total Prize Money (Win and Place)</b>
1. <b>Ryan Moore</b>	874	178	385	20.4%	£4,867,370
2. <b>Richard Hills</b>	424	98	176	23.1%	£2,814,792
3. <b>Jimmy Fortune</b>	586	73	238	12.5%	£2,380,045
4. <b>Johnny Murtagh</b>	82	15	47	18.3%	£2,312,087
5. <b>Frankie Dettori</b>	429	103	177	24.0%	£2,267,057
6. <b>Richard Hughes</b>	768	144	290	18.8%	£2,245,152
7. <b>Tom Queally</b>	825	109	297	13.2%	£2,104,163
8. <b>M. J. Kinane</b>	31	5	15	16.1%	£1,906,289
9. <b>Jamie Spencer</b>	695	130	266	18.7%	£1,755,946
10. <b>Neil Callan</b>	888	120	305	13.5%	£1,549,291

**Leading Jockeys  
Prize Money won in Great Britain**

**Jump - 2009**

<b>Jockey</b>	<b>Number of Rides</b>	<b>Number of Winners</b>	<b>Number of Placed Horses</b>	<b>Strike Rate</b>	<b>Total Prize Money (Win and Place)</b>
1. <b>R. Walsh</b>	240	69	112	28.8%	£2,787,005
2. <b>A. P. McCoy</b>	875	212	315	24.2%	£2,073,411
3. <b>Paddy Brennan</b>	631	61	270	9.7%	£1,463,799
4. <b>Richard Johnson</b>	840	153	391	18.2%	£1,305,059
5. <b>Barry Geraghty</b>	234	70	91	29.9%	£1,301,680
6. <b>Robert Thornton</b>	617	88	256	14.3%	£1,249,862
7. <b>Timmy Murphy</b>	352	58	127	16.5%	£1,132,494
8. <b>Tom Scudamore</b>	570	67	182	11.8%	£897,900
9. <b>Noel Fehily</b>	506	86	174	17.0%	£832,888
10. <b>Liam Treadwell</b>	263	23	96	8.7%	£807,500

# SECTION A

## BREEDING

### TABLE 1

#### Breeding Statistics

##### Lines 1 to 6

##### Registered Stallions and Mares Reported at Stud

The number of Registered Stallions in Great Britain and Ireland and the number of Mares Reported at Stud in Great Britain and Ireland, as contained in the Return of Mares.

##### Lines 7 to 13

##### Number of Live Thoroughbred Foals

The number of live Thoroughbred Foals born in Great Britain (England, Scotland and Wales) and Ireland (Irish Republic and Northern Ireland) as reported to the Stud Book Authority during the year and as contained in the Return of Mares.

##### Lines 14 to 16

##### Number of Names Registered under the Orders and Rules of Racing

The number of horses' names registered in a year with the Names Section of Racing Administration Department at Weatherbys and expressed in two parts – Thoroughbred and Non-Thoroughbred.

##### Line 17

##### Number of Horses Exported from Great Britain and Ireland

The number of horses for which Application forms for Release of Stud Book Certificates have been received and actioned by the Stud Book Authority during the year.

### TABLE 2

#### Analysis of Exported Horses

An analysis by country of importation of the number of horses exported from Great Britain and Ireland during the year. The top 15 countries are shown, together with an aggregate of all the other destinations.

## Breeding Statistics

	2005	2006	2007	2008	2009
1. No. of Registered Stallions That Stood in Great Britain	326	374	352	345	347
2. No. of Registered Stallions That Stood in Ireland	377	392	399	411	367
3. Total No. of Registered Stallions That Stood in Great Britain and Ireland	703	766	751	756	714
4. No. of Mares Reported at Stud in Great Britain	11,947	11,326	11,091	10,740	10,624
5. No. of Mares Reported at Stud in Ireland	18,817	19,251	20,700	20,038	18,851
6. Total No. of Mares Reported at Stud in Great Britain and Ireland	30,764	30,577	31,791	30,778	29,475
7. No. of Live Thoroughbred Foals in Great Britain - Colts	2,878	2,667	2,966	2,959	2,725
8. No. of Live Thoroughbred Foals in Great Britain - Fillies	2,848	2,819	2,873	2,961	2,870
9. No. of Live Thoroughbred Foals in Great Britain - TOTAL	5,726	5,486	5,839	5,920	5,595
10. No. of Live Thoroughbred Foals in Ireland - Colts	5,868	5,933	6,331	6,325	5,460
11. No. of Live Thoroughbred Foals in Ireland - Fillies	5,882	6,071	6,302	6,094	4,707
12. No. of Live Thoroughbred Foals in Ireland - TOTAL	11,750	12,004	12,633	12,419	10,167
13. Total No. of Live Thoroughbred Foals in Great Britain and Ireland	17,476	17,490	18,472	18,339	15,762
14. No. of Names Registered Under the Rules of Racing - Thoroughbred	13,994	14,997	15,669	15,220	14,356
15. No. of Names Registered Under the Rules of Racing - Non-Thoroughbred	678	538	480	441	427
16. No. of Names Registered Under the Rules of Racing - TOTAL	14,672	15,535	16,149	15,661	14,783
17. No. of Horses Exported from Great Britain and Ireland	3,445	3,439	3,091	3,413	3,471

## Analysis of Exported Horses

2009

	Country	Mares	Fillies, 4 yrs and Under	Colts, 4 yrs and Under	Geldings	Horses	Total
1	France	138	543	407	28	15	1,131
2	Italy	51	203	225	5	6	490
3	USA	82	114	56	42	7	301
4	United Arab Emirates	0	31	120	46	12	209
5	Germany	18	81	81	19	2	201
6	Greece	0	73	37	31	0	141
7	Spain	18	45	48	6	0	117
8	Kingdom of Saudi Arabia	43	31	14	6	0	94
9	Sweden	8	19	24	19	1	71
10	Bahrain	2	14	21	15	0	52
11	India	38	4	1	0	3	46
12	Turkey	28	8	8	0	0	44
13 =	Japan	22	16	3	0	1	42
13 =	Morocco	13	14	15	0	0	42
13 =	South Africa	7	32	0	2	1	42
	OTHERS	39	165	148	84	12	448
<b>GRAND TOTAL</b>							<b>3,471</b>

# SECTION B

## OWNERSHIP

### TABLE 1

#### **New Registrations**

##### **Line 1 Registered Owners**

The total number of Owners becoming registered during the year.

##### **Line 2 Colours**

The number of new Colours registered during the year.

##### **Line 3 Joint Ownerships**

The number of new Joint Ownerships registered during the year.

##### **Line 4 Joint Ownership Names**

The number of new Joint Ownership Names registered during the year.

##### **Line 5 Racing Partnerships**

The number of new Racing Partnerships registered during the year.

##### **Line 6 Leases**

The number of new Leases registered during the year.

##### **Line 7 Registered Companies**

The number of new Companies registered for the purpose of owning horses during the year.

##### **Line 8 Recognised Business Partnerships**

The number of new Business Partnerships registered for the purpose of owning horses during the year.

#### **Registrations Current at Year End**

##### **Line 1 Registered Owners**

The total number of Registered Owners on file as at the year end. Owners are normally kept on file until they have not had a horse in training for 24 consecutive months.

##### **Line 2 Colours**

The total number of Colours on file as at the year end.

**Line 3**  
**Joint Ownerships**

The total number of Joint Ownerships held on file as at the year end.

**Line 4**  
**Joint Ownership Names**

The total number of Joint Ownership Names held on file as at the year end.

**Line 5**  
**Racing Partnerships**

The total number of Racing Partnerships held on file as at the year end.

**Line 6**  
**Leases**

The total number of Leases in operation as at the year end.

**Line 7**  
**Registered Companies**

The total number of Company Registrations in operation as at the year end.

**Line 8**  
**Recognised Business Partnerships**

The total number of Business Partnerships in operation as at the year end.

**TABLE 2**

**Number of Owners Showing their Numbers of Horses in Training**

The number of Owners categorised by the number of horses in training that they own. **With horses owned jointly, all the partners or lessees are counted and their shares are each counted as one horse.**

The figures shown in the table for each year are an average of the 12 monthly figures produced. As the figures are rounded to the nearest whole number, the total may not equal the sum of the individual parts.

**TABLE 3**

**Numbers of Owners With Horses in Training by Type of Ownership**

The numbers of owners with horses in training, categorised by type of ownership. The Inclusive Figures allow for duplication of a single owner in more than one of the categories, depending on the types of ownership involvement, and therefore show the total number of different owners involved in each category. The Exclusive Figures show a more precise breakdown of ownership types by which each owner with horses in training is categorised in only one of the categories. The sum of these categories is, therefore, equal to the number of different owners with horses in training as categorised in Table B2.

The figures shown in the table for each year are an average of the 12 monthly figures produced. As the figures are rounded to the nearest whole number, the total may not equal the sum of the individual parts.

## Registrations

### New Registrations

	2005	2006	2007	2008	2009
Registered Owners	2,282	2,169	2,104	1,950	1,742
Colours	2,944	3,049	3,112	3,176	3,338
Joint Ownerships	2,820	2,800	3,008	2,912	2,970
Joint Ownership Names	836	960	1,002	951	980
Racing Partnerships	583	486	592	505	438
Leases	363	316	389	350	358
Registered Companies	78	89	62	76	70
Recognised Business Partnerships	1	2	3	2	0

### Registrations Current At Year End

	2005	2006	2007	2008	2009
Registered Owners	17,600	17,816	17,999	17,745	17,434
Colours	19,121	19,660	20,142	20,368	20,354
Joint Ownerships	4,414	4,447	4,575	4,672	4,617
Joint Ownership Names	2,955	3,259	3,687	4,058	4,252
Racing Partnerships	2,913	2,457	2,643	2,667	2,627
Leases	289	271	335	326	326
Registered Companies	685	671	639	629	610
Recognised Business Partnerships	73	42	40	39	32



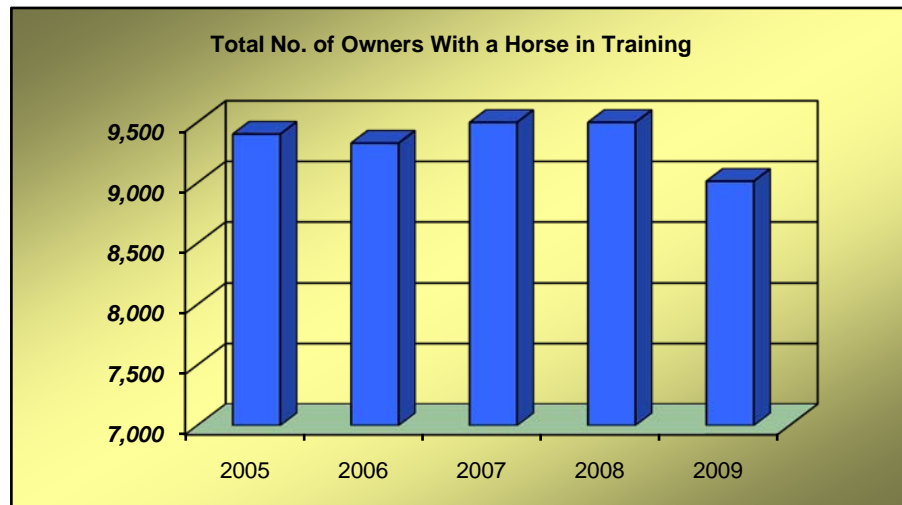
## Ownership Statistics

### Number of Owners With a Horse in Training by the Number of Horses They Own

	2005	2006	2007	2008	2009
No. of Owners with - 1 Horse in Training	5,568	5,523	5,595	5,555	5,157
2 Horses in Training	1,841	1,771	1,865	1,850	1,792
3 Horses in Training	774	792	796	782	752
4 Horses in Training	386	397	397	416	415
5 Horses in Training	224	228	246	251	234
6-10 Horses in Training	414	418	437	452	430
11-20 Horses in Training	133	141	151	160	155
21+ Horses in Training	63	60	65	73	79
<b>Total No. of Owners With a Horse in Training</b>	<b>9,403</b>	<b>9,329</b>	<b>9,551</b>	<b>9,539</b>	<b>9,014</b>

**Notes**

With horses owned jointly, all the partners or lessees are counted and their shares are each counted as one horse.



## Ownership Statistics

### Number of Owners With a Horse in Training by Type of Ownership

	2005	2006	2007	2008	2009
<b>INCLUSIVE FIGURES</b>					
No. of Sole Owners (excluding Company)	3,524	3,454	3,526	3,489	3,357
No. of Company Sole Owners	344	341	321	329	311
No. of Business Partnerships	33	33	29	31	28
No. of Joint Ownership Owners	4,742	4,758	4,913	4,914	4,643
No. of Racing Partnership Owners	2,451	2,387	2,485	2,554	2,402
<b>EXCLUSIVE FIGURES</b>					
No. of Sole Owners (excluding Company)	2,632	2,586	2,585	2,545	2,445
No. of Company Sole Owners	281	275	256	264	254
No. of Business Partnership Sole Owners	26	26	22	21	19
No. of Sole Owners and Joint Ownership Owners	892	868	941	943	912
No. of Company Owners and Joint Ownership Owners	63	65	65	65	58
No. of Business Partners and Joint Ownership Owners	8	7	7	9	9
No. of Joint Ownership Owners only (including Companies)	5,502	5,502	5,675	5,690	5,318
<b>TOTAL</b>	<b>9,403</b>	<b>9,329</b>	<b>9,551</b>	<b>9,539</b>	<b>9,014</b>

# SECTION C

## TRAINING AND RIDING

**TABLE 1**

### **Licences and Permits to Train and Ride**

**Line 1**  
**Trainers Combined Licences**

The number of Licences issued by the Licensing Committee, to train horses for both Flat and Jump races, during the year.

**Line 2**  
**Trainers Flat Only Licences**

The number of Licences to train horses, for Flat races only, issued during the year.

**Line 3**  
**Trainers Jump Only Licences**

The number of Licences to train horses, for Jump races only, issued during the year.

**Line 4**  
**Permits to Train**

The number of Permits issued for the training of horses (Jump races only) during the season specified.

**Line 5**  
**Flat Jockeys Licences**

The number of Professional Jockey Licences issued by the Licensing Committee to Flat Jockeys during the year.

**Line 6**  
**Jump and Conditional Jockey Licences**

The number of Professional Jockey Licences issued by the Licensing Committee to Jump and Conditional Jockeys during the season specified.

**Line 7**  
**Apprentice Jockey Licences**

The number of Apprentice Jockey Licences issued by the Licensing Committee during the year.

**Line 8**  
**Amateur Riders Permits**

The number of Permits issued to Amateur Riders by the Licensing Committee during the season specified.

Category A permits entitle the holder to ride in all Amateur Flat Races and Steeple Chases and Hurdle Races confined to Amateur Riders.

Category B permits also allow the holder to ride in Steeple Chases and Hurdle Races open to Professional Jockeys.

## **TABLE 2**

### **Horses in Training by Type and Age of Horse**

An analysis of the number of horses in training taken from Trainers Returns and broken down into: Flat-Only horses, Jump-Only horses, Dual-Purpose horses and Hunters' Steeple Chasers. Within each of these sub-sections, the horse population is broken down by age group.

Due to a change in the way Dual-Purpose horses have been classified from February 2009 onwards, the breakdown between Flat-Only, Jump-Only and Dual-Purpose horses may not be comparable with previous years.

The figures shown in the table for each year are an average of the 12 monthly figures produced. As the figures are rounded to the nearest whole number, the total may not equal the sum of the individual parts.

For Hunter Chasers, only a total figure is shown. This is the highest number recorded during the year, typically the figure for May or June.

## **TABLE 3**

### **Horses in Training by Type of Ownership**

An analysis of the number of horses in training taken from Trainers Returns giving a breakdown of the number of horses in training by ownership type and an analysis of the horses owned jointly.

The figures shown in the table for each year are an average of the 12 monthly figures produced. As the figures are rounded to the nearest whole number, the total may not equal the sum of the individual parts.

## **TABLE 4**

### **Horses in Training – Size of Trainers' Yards**

An analysis of the number of horses in training taken from Trainers Returns and broken down by type of trainer and number of horses in each yard by horse type, except for Permit Holders and Hunter Trainers, where the breakdown by horse type is not shown.

The figures shown in the table for each year are an average of the 12 monthly figures produced, except for Hunter Trainers, where an average of the monthly figures for February to June is shown. As the figures are rounded to the nearest whole number, the total may not equal the sum of the individual parts.

## Training and Riding

### Licences and Permits to Train and Ride

	2004/2005 Jump Season	2005/2006 Jump Season	2006/2007 Jump Season	2007/2008 Jump Season	2008/2009 Jump Season
	2005 Flat Season	2006 Flat Season	2007 Flat Season	2008 Flat Season	2009 Flat Season
<b>TRAINERS</b>					
Combined Licences	511	503	520	508	496
Flat Only Licences	48	48	50	40	42
Jump Only Licences	61	61	74	52	48
Permits to Train	183	198	183	156	141
<b>RIDERS</b>					
Flat Professional Licences	121	125	130	127	135
Jump Professional Licences	Jump	99	105	101	98
	Conditional	178	163	132	151
Flat Apprentice Licences	222	219	214	229	216
Amateur Riders' Permits (July 1st - June 30th)	Category A	393	374	383	396
	Category B	249	247	243	222

## Horses in Training

### Flat-Only Horses<sup>1</sup>

	2005	2006	2007	2008	2009
2-y-o	3,250	3,085	3,420	3,396	3,160
3-y-o	2,699	2,668	2,576	2,874	2,790
4-y-o	1,158	1,157	1,201	1,103	1,288
5-y-o+	1,354	1,378	1,360	1,411	1,679
<b>TOTAL</b>	<b>8,461</b>	<b>8,288</b>	<b>8,557</b>	<b>8,784</b>	<b>8,917</b>

### Dual-Purpose Horses<sup>1</sup>

	2005	2006	2007	2008	2009
3-y-o	104	123	146	140	83
4-y-o	399	421	491	500	228
5-y-o+	1,227	1,309	1,496	1,654	765
<b>TOTAL</b>	<b>1,730</b>	<b>1,854</b>	<b>2,133</b>	<b>2,293</b>	<b>1,075</b>

#### NOTES

- Due to changes in the way that Dual Purposes horses are classified from February 2009 onwards, the figures for Flat-Only, Jump-Only and Dual-Purpose horses may not be comparable with previous years.
- The figure for Hunter Chasers is the highest point reached during the year, typically in May or June, whereas all other figures are an average of the 12 monthly figures for each year.

### Jump-Only Horses<sup>1</sup>

	2005	2006	2007	2008	2009
3-y-o	102	92	93	91	106
4-y-o	539	558	548	484	619
5-y-o+	3,556	3,503	3,546	3,502	3,952
<b>TOTAL</b>	<b>4,197</b>	<b>4,153</b>	<b>4,187</b>	<b>4,077</b>	<b>4,677</b>

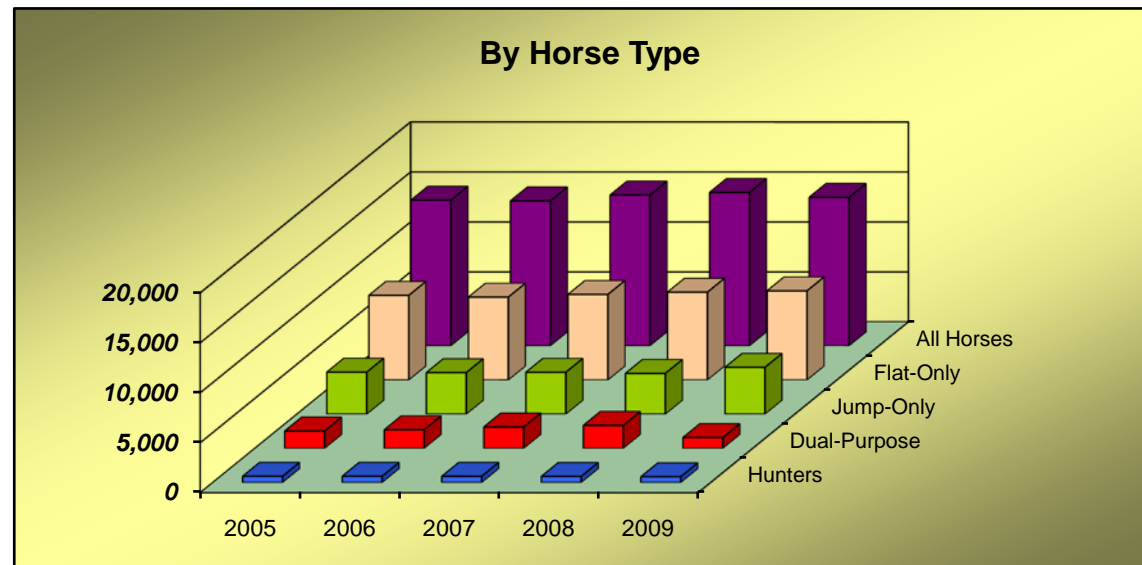
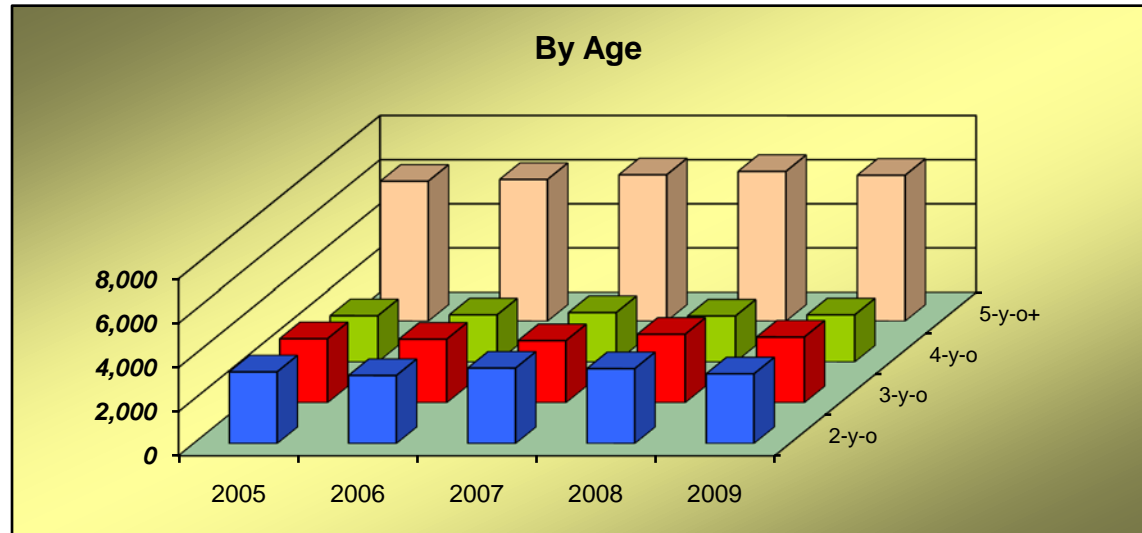
### Hunter Chasers<sup>2</sup>

	2005	2006	2007	2008	2009
<b>TOTAL</b>	<b>621</b>	<b>622</b>	<b>617</b>	<b>606</b>	<b>574</b>

### All Horses

	2005	2006	2007	2008	2009
2-y-o	3,250	3,085	3,420	3,396	3,160
3-y-o	2,904	2,882	2,815	3,105	2,979
4-y-o	2,096	2,136	2,240	2,086	2,135
5-y-o+	6,318	6,398	6,608	6,761	6,586
<b>TOTAL</b>	<b>14,568</b>	<b>14,501</b>	<b>15,083</b>	<b>15,349</b>	<b>14,859</b>

## Horses in Training



## Horses in Training by Type of Ownership

	2005	2006	2007	2008	2009
No. of Horses Owned by a Sole Individual	8,430	8,256	8,621	8,683	8,519
No. of Horses Owned by a Sole Company	1,231	1,197	1,045	1,096	1,027
No. of Horses Owned by a Sole Business Partnership	87	89	88	83	77
No. of Horses Owned by a Joint Ownership	2,958	3,044	3,117	3,132	2,947
No. of Horses Owned by a Racing Partnership	2,142	2,209	2,424	2,557	2,529
<b>TOTAL</b>	<b>14,848</b>	<b>14,795</b>	<b>15,294</b>	<b>15,550</b>	<b>15,098</b>
No. of Horses Owned Jointly by a Party of 2	3,749	3,883	4,098	4,219	4,062
No. of Horses Owned Jointly by a Party of 3	852	881	932	970	942
No. of Horses Owned Jointly by a Party of 4	329	305	328	329	297
No. of Horses Owned Jointly by a Party of 5+	171	184	182	171	175
<b>TOTAL NO. OF HORSES OWNED JOINTLY</b>	<b>5,100</b>	<b>5,253</b>	<b>5,540</b>	<b>5,689</b>	<b>5,476</b>

### Notes

The figure for the Total Number of Horses in Training shown in this table will overstate the figure shown in Table C2 due to the fact that the above figures also include Yearlings.

Horses owned jointly includes horses owned by Joint Ownerships and Racing Partnerships.



## Horses in Training - Size of Trainers' Yards

### Licensed Trainers

		2005	2006	2007	2008	2009
No. of Yards With	1-10 Flat-Only Horses	247	245	252	253	255
	11-15 Flat-Only Horses	48	46	47	45	48
	16-20 Flat-Only Horses	30	30	29	24	33
	21-30 Flat-Only Horses	38	33	30	34	30
	31-40 Flat-Only Horses	23	22	21	22	24
	41+ Flat-Only Horses	57	58	63	65	65
No. of Yards With	1-10 Jump-Only Horses	295	294	279	303	299
	11-15 Jump-Only Horses	31	33	34	31	39
	16-20 Jump-Only Horses	18	18	17	16	20
	21-30 Jump-Only Horses	18	14	11	14	19
	31-40 Jump-Only Horses	8	8	8	8	8
	41+ Jump-Only Horses	14	15	16	15	18
No. of Yards With	1-10 Dual-Purpose Horses	335	342	355	368	310
	11-15 Dual-Purpose Horses	15	20	21	24	9
	16-20 Dual-Purpose Horses	7	8	11	9	3
	21-30 Dual-Purpose Horses	5	5	6	6	1
	31-40 Dual-Purpose Horses	3	3	2	4	0
	41+ Dual-Purpose Horses	1	1	3	4	1
No. of Yards With	1-10 Horses In Total	210	217	223	232	226
	11-15 Horses In Total	96	99	90	88	88
	16-20 Horses In Total	62	57	65	63	64
	21-30 Horses In Total	70	74	66	65	66
	31-40 Horses In Total	42	37	40	42	38
	41+ Horses In Total	90	92	97	102	99
<b>TOTAL YARDS WITH A HORSE IN TRAINING</b>		<b>569</b>	<b>576</b>	<b>581</b>	<b>591</b>	<b>581</b>

## Horses in Training - Size of Trainers' Yards

### Permit Holders and Hunter Trainers

#### Permit Holders

		2005	2006	2007	2008	2009
No. of Yards With	1-10 Horses In Total	153	151	141	122	113
	11+ Horses In Total	7	7	5	4	3
<b>TOTAL YARDS WITH A HORSE IN TRAINING</b>		<b>160</b>	<b>157</b>	<b>146</b>	<b>126</b>	<b>116</b>

#### Hunter Trainers

		2005	2006	2007	2008	2009
No. of Yards With	1-10 Horses In Total	298	283	281	276	275
	11+ Horses In Total	0	0	0	0	1
<b>TOTAL YARDS WITH A HORSE IN TRAINING</b>		<b>298</b>	<b>283</b>	<b>282</b>	<b>276</b>	<b>276</b>

#### Notes

The figure for Hunter Trainers is an average of the figures for February to June, whereas for Permit Holders it is an average of figures for January to December.

## Horses in Training - Size of Trainers' Yards

### All Trainers

		2005	2006	2007	2008	2009
No. of Yards With	1-10 Flat-Only Horses	256	250	259	258	269
	11-15 Flat-Only Horses	48	46	47	45	48
	16-20 Flat-Only Horses	30	30	29	24	33
	21-30 Flat-Only Horses	38	33	30	34	30
	31-40 Flat-Only Horses	23	22	21	22	24
	41+ Flat-Only Horses	57	58	63	65	65
No. of Yards With	1-10 Jump-Only Horses	613	582	587	560	551
	11-15 Jump-Only Horses	36	38	38	34	43
	16-20 Jump-Only Horses	18	20	17	16	20
	21-30 Jump-Only Horses	18	14	11	14	19
	31-40 Jump-Only Horses	8	8	8	8	8
	41+ Jump-Only Horses	14	15	16	15	18
No. of Yards With	1-10 Dual-Purpose Horses	336	343	359	371	314
	11-15 Dual-Purpose Horses	15	20	21	24	9
	16-20 Dual-Purpose Horses	7	8	11	9	3
	21-30 Dual-Purpose Horses	5	5	6	6	1
	31-40 Dual-Purpose Horses	3	3	2	4	0
	41+ Dual-Purpose Horses	1	1	3	4	1
No. of Yards With	1-10 Horses In Total	527	506	512	492	487
	11-15 Horses In Total	102	105	95	91	91
	16-20 Horses In Total	63	59	65	63	65
	21-30 Horses In Total	70	74	67	65	66
	31-40 Horses In Total	43	37	40	42	38
	41+ Horses In Total	90	92	98	102	99
<b>TOTAL YARDS WITH A HORSE IN TRAINING</b>		<b>894</b>	<b>872</b>	<b>876</b>	<b>855</b>	<b>846</b>

## SECTION D

### FIXTURES, RACES AND PRIZE MONEY

#### TABLE 1

##### Fixtures

A fixture is defined as **one** day's racing at **one** course.

#### TABLE 2

##### Field Sizes - Flat

The number of Runners (1-5, 6-10, 11-15, 16-20 and 21+) in the number of races shown monthly for Flat races. The number of Walkovers (if any) is shown separately.

#### TABLE 3

##### Field Sizes - Jump

The number of Runners (1-5, 6-10, 11-15, 16-20 and 21+) in the number of races shown monthly for Hurdle Races and National Hunt Flat Races, and for Steeple Chases. The number of Walkovers (if any) is shown separately.

#### TABLE 4

##### Field Sizes – Flat and Jump

The number of Runners (1-5, 6-10, 11-15, 16-20 and 21+) in the number of races shown as a total for each of the last 5 years for Flat races and Jump races. A separate table for Hurdle Races and National Hunt Flat Races and for Steeple Chases is also shown. The number of Walkovers (if any) is shown separately.

#### TABLE 5

##### Flat Racing

##### Number of Different Horses Which Ran – by Age

An analysis of the number of different horses which ran on the Flat under Rules in each calendar year as 2 years old, 3 years old, 4 years old and over and in total.

##### Average Number of Runs per Horse that Ran

The number of individual different horses that ran on the Flat divided into the total number of Flat runners for each year.

##### Number of Different Winners

The number of different horses which won a Flat race under Rules in the calendar year.

##### Number of Races Divided Overnight

The number of different Flat races that were divided under the Rules of Racing because the number of horses declared to run exceeded the safety factor/maximum figure or field size limit of the race concerned or, in exceptional circumstances, to provide a sufficient number of races on the day due to other races on the card being abandoned.

### **Number of Horses Balloted Out or Eliminated**

The number of horses taken out of a Flat race under the Rules of Racing because the number left in at the declaration to run stage exceeded the safety factor/maximum figure or field size limit. These figures are for ALL Flat races, including abandoned races, so will not necessarily equate to the total number of eliminations in table D6, which is only for races that actually took place.

### **Jump Racing**

#### **Number of Different Horses Which Ran**

The total number of different horses which ran under Jump Rules in each calendar year.

#### **Average Number of Runs per Horse that Ran**

The number of individual different horses that ran under Jump Rules divided into the total number of Jump runners for each calendar year.

#### **Number of Different Winners**

The number of different horses that won a Jump race under Rules in the calendar year.

#### **Number of Races Divided Overnight**

The number of different Jump races that were divided under the Rules of Racing because the number of horses declared to run exceeded the safety factor/maximum figure or field size limit of the race concerned or, in exceptional circumstances, to provide a sufficient number of races on the day due to other races on the card being abandoned.

### **Number of Horses Balloted Out or Eliminated**

The number of horses taken out of a Jump race under the Rules of Racing because the number left in at the declaration to run stage exceeded the safety factor/maximum figure or field size limit. These figures are for ALL Jump races, including abandoned races, so will not necessarily equate to the total number of eliminations in tables D7, D8 and D9, which are only for races that actually took place.

## **TABLE 6**

### **Races, Entries, Runners, Eliminations and Prize Money by Type of Race – Flat**

An analysis of the number of Entries, Runners and Eliminations by types of Handicaps and types of Weight-for-Age races, together with Prize Money value and percentage of total Flat Prize Money for each type.

## **TABLE 7**

### **Races, Entries, Runners, Eliminations and Prize Money by Type of Race – Jump**

An analysis of the number of Entries, Runners and Eliminations by types of Handicaps and types of Weight-for-Age races, together with Prize Money value and percentage of total Jump Prize Money for each type.

## **TABLE 8**

### **Races, Entries, Runners, Eliminations and Prize Money by Distance of Race – Hurdle Races and National Hunt Flat Races**

An analysis of the number of Entries, Runners and Eliminations by Distance of Race in Handicaps and Weight-for-Age races for Hurdle Races and National Hunt Flat Races. Averages per race, together with Prize Money value and percentage of total Prize Money for Hurdle Races and National Hunt Flat Races for each Distance category are shown.

## **TABLE 9**

### **Races, Entries, Runners, Eliminations and Prize Money by Distance of Race – Steeple Chases**

An analysis of the number of Entries, Runners and Eliminations by Distance of Race in Handicaps and Weight-for-Age races for Steeple Chases. Averages per race, together with Prize Money value and percentage of total Prize Money for Steeple Chases for each Distance category are shown.

## **TABLE 10**

### **Prize Money by Source for Pattern Races – Flat Racing**

An analysis by Course of the source of Prize Money for Flat Pattern Races.

## **TABLE 11**

### **Prize Money by Source**

An analysis of the total Prize Money for the last 5 years, broken down by source.

## **TABLE 12**

### **Comparison of Flat and Jump Prize Money Pools**

An analysis of Flat Prize Money, Jump Prize Money and Total Prize Money by source.

## **TABLE 13**

### **Total Prize Money by Racecourse**

A comparison of the number of Fixtures and Prize Money by source for each Racecourse. A separate table is shown for Flat Racing, Jump Racing and All Racing.

## **TABLE 14**

### **Sponsored Number Cloth Income**

A breakdown by Racecourse (Flat, Jump and Total) of the income derived from the sponsoring of number cloths.

## **TABLE 15**

### **Prize Money Won Abroad by Horses Trained in Great Britain**

Win and Place Prize Money won abroad (i.e. not England, Scotland or Wales) by horses trained in Great Britain at the time of running.

### **Prize Money Won in Great Britain by Horses Trained outside of Great Britain**

Win and Place Prize Money won in Great Britain by horses showing a foreign Trainer in the Official Return sent in by the Clerk of the Scales from the Racecourse. The amount taken will be the Penalty Value shown.

## **TABLE 16**

### **Appearance Money**

The amount paid in Appearance Money payments for the last 5 years, under Schedule (F)11 of the Rules of Racing. A breakdown is shown of money paid in respect of Sunday Racing and that paid for races run on other days of the week.

### **Owners' Premiums**

The amount paid in Owners' Premiums for British Bred Horses in accordance with Rules of Racing. The Owners' Premium Scheme ran from January 1st, 2004 until December 31st, 2006.

## Prize Money and Race Statistics

### Fixtures

	2005	2006	2007	2008	2009
<b>Flat</b>					
Fixtures Programmed	(a) 811	(c) 842	(b,e,h) 868	(m,n) 945	(u) 926
Fixtures That Took Place	(b) 801	(d,e) 832	844	(o,p,q,r,s) 916	(n) 919
Fixtures Abandoned	11	10	23	29	5
<b>Jump</b>					
Fixtures Programmed	535	546	(i) 544	556	579
Fixtures That Took Place	496	(f,g) 506	(j) 482	(t) 505	505
Fixtures Abandoned	39	41	63	56	(v) 75
<b>Mixed</b>					
Fixtures Programmed	3	3	3	3	2
Fixtures That Took Place	3	(g) 4	(k) 4	(s) 2	2
Fixtures Abandoned	0	0	0	0	0
<b>All Racing</b>					
Fixtures Programmed	1,349	1,391	1,415	1,504	1,507
Fixtures That Took Place	1,300	1,342	1,330	1,423	1,426
Fixtures Abandoned	50	51	86	85	80
<b>(Of Which Evening)</b>					
Fixtures Programmed	221	229	(l) 287	372	331
Fixtures That Took Place	217	226	270	(n) 364	(n) 325
Fixtures Abandoned	4	3	16	(r) 7	4

#### Notes

- (a) 216 All Weather Track fixtures programmed
- (b) 1 Additional AWT Flat fixture
- (c) 297 All Weather Track fixtures
- (d) 2 Additional Flat fixtures
- (e) 2 AWT fixtures cancelled
- (f) 1 additional Jump fixture
- (g) 1 Jump fixture abandoned and replaced by an additional AWT (Mixed) fixture
- (h) 316 All Weather Track fixtures programmed, 8 of which were transferred to Turf
- (i) 2 Additional Jump fixtures
- (j) 1 Jump fixture cancelled
- (k) 1 Additional Mixed (AWT) fixture
- (l) 1 Additional Evening fixture and 2 Evening fixtures cancelled
- (m) 361 All Weather Track Flat fixtures programmed
- (n) 2 All Weather Track Flat Evening fixtures withdrawn from the fixture list
- (o) 1 All Weather Track Flat fixture transferred to a Turf course
- (p) 1 Turf/AWT Flat fixture converted to AWT only
- (q) 1 AWT Flat fixture converted to Turf only
- (r) 1 abandoned Flat fixture replaced by an additional fixture
- (s) 1 Mixed fixture converted to a Flat fixture
- (t) 5 additional Jump fixtures, one of which was subsequently abandoned and one of which replaced another abandoned fixture
- (u) 331 All Weather Track Flat fixtures programmed
- (v) 1 Jump fixture abandoned and replaced by Flat AWT fixture

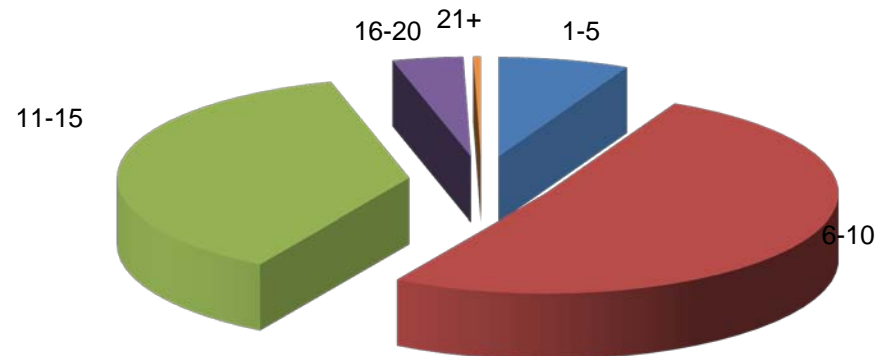


## Numbers of Runners in Races

### Flat Racing

**2009**

Runners	Number of Races												Total	% of All Races
	Jan	Feb	Mar	Apr	May	Jun	Jul	Aug	Sep	Oct	Nov	Dec		
1-5	29	49	32	31	37	63	61	60	36	26	10	20	<b>454</b>	<b>7.3%</b>
6-10	206	178	168	233	349	411	461	411	324	200	112	152	<b>3,205</b>	<b>51.2%</b>
11-15	94	62	74	175	277	260	246	272	289	318	152	105	<b>2,324</b>	<b>37.2%</b>
16-20	0	0	7	18	51	31	33	37	20	41	7	0	<b>245</b>	<b>3.9%</b>
21+	0	0	1	1	1	6	3	1	7	5	1	0	<b>26</b>	<b>0.4%</b>
<b>TOTAL</b>	<b>329</b>	<b>289</b>	<b>282</b>	<b>458</b>	<b>715</b>	<b>771</b>	<b>804</b>	<b>781</b>	<b>676</b>	<b>590</b>	<b>282</b>	<b>277</b>	<b>6,254</b>	<b>100.0%</b>



## Numbers of Runners in Races

### Jump Racing

**2009**

#### Hurdle Races and National Hunt Flat Races

Runners	Number of Races												Total	% of All Races
	Jan	Feb	Mar	Apr	May	Jun	Jul	Aug	Sep	Oct	Nov	Dec		
1-5	2	10	14	10	6	3	1	1	1	16	12	6	<b>82</b>	<b>4.1%</b>
6-10	45	83	94	90	88	43	45	37	30	76	134	68	<b>833</b>	<b>41.2%</b>
11-15	72	66	108	101	76	62	48	41	50	75	115	84	<b>898</b>	<b>44.4%</b>
16-20	26	22	39	21	14	8	4	6	9	10	16	20	<b>195</b>	<b>9.6%</b>
21+	1	0	8	4	1	0	0	0	0	0	1	0	<b>15</b>	<b>0.7%</b>
<b>TOTAL</b>	<b>146</b>	<b>181</b>	<b>263</b>	<b>226</b>	<b>185</b>	<b>116</b>	<b>98</b>	<b>85</b>	<b>90</b>	<b>177</b>	<b>278</b>	<b>178</b>	<b>2,023</b>	<b>100.0%</b>

#### Steeple Chases

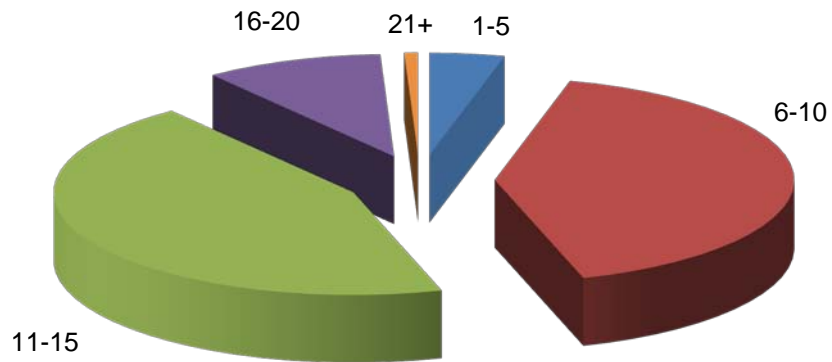
Runners	Number of Races												Total	% of All Races
	Jan	Feb	Mar	Apr	May	Jun	Jul	Aug	Sep	Oct	Nov	Dec		
1-5	11	34	47	35	17	3	7	7	4	28	43	23	<b>259</b>	<b>19.2%</b>
6-10	49	69	105	84	72	34	32	24	19	65	110	68	<b>731</b>	<b>54.1%</b>
11-15	30	20	38	35	39	13	16	12	16	15	37	30	<b>301</b>	<b>22.3%</b>
16-20	5	5	9	7	10	4	2	1	0	2	4	4	<b>53</b>	<b>3.9%</b>
21+	0	0	4	3	0	0	0	0	0	0	0	0	<b>7</b>	<b>0.5%</b>
<b>TOTAL</b>	<b>95</b>	<b>128</b>	<b>203</b>	<b>164</b>	<b>138</b>	<b>54</b>	<b>57</b>	<b>44</b>	<b>39</b>	<b>110</b>	<b>194</b>	<b>125</b>	<b>1,351</b>	<b>100.0%</b>

# Numbers of Runners in Races

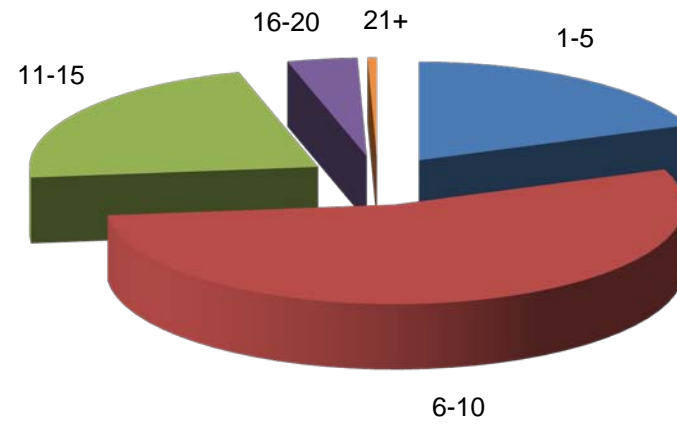
## Jump Racing

2009

### Hurdle Races and National Hunt Flat Races



### Steeple Chases



## Analysis of Racing by Size of Field

### Flat Races

Runners	2005		2006		2007		2008		2009	
	Number of Races	% of All Races	Number of Races	% of All Races	Number of Races	% of All Races	Number of Races	% of All Races	Number of Races	% of All Races
1-5	193	3.6%	295	5.3%	256	4.5%	426 <sup>(1)</sup>	7.0%	454	7.3%
6-10	2,014	38.0%	2,367	42.6%	2,536	44.8%	2,964	48.4%	3,205	51.2%
11-15	2,451	46.2%	2,518	45.3%	2,524	44.6%	2,398	39.1%	2,324	37.2%
16-20	611	11.5%	348	6.3%	310	5.5%	311	5.1%	245	3.9%
21+	32	0.6%	26	0.5%	33	0.6%	29	0.5%	26	0.4%
<b>TOTAL</b>	<b>5,301</b>	<b>100.0%</b>	<b>5,554</b>	<b>100.0%</b>	<b>5,659</b>	<b>100.0%</b>	<b>6,128</b>	<b>100.0%</b>	<b>6,254</b>	<b>100.0%</b>

### Jump Races

Runners	2005		2006		2007		2008		2009	
	Number of Races	% of All Races	Number of Races	% of All Races	Number of Races	% of All Races	Number of Races	% of All Races	Number of Races	% of All Races
1-5	245	7.5%	264	7.8%	317 <sup>(1)</sup>	9.9%	256	7.6%	341	10.1%
6-10	1,560	47.5%	1,565	46.3%	1,375	42.7%	1,431	42.5%	1,564	46.4%
11-15	1,113	33.9%	1,217	36.0%	1,189	36.9%	1,317	39.1%	1,199	35.5%
16-20	336	10.2%	305	9.0%	312	9.7%	333	9.9%	248	7.4%
21+	33	1.0%	29	0.9%	25	0.8%	29	0.9%	22	0.7%
<b>TOTAL</b>	<b>3,287</b>	<b>100.0%</b>	<b>3,380</b>	<b>100.0%</b>	<b>3,218</b>	<b>100.0%</b>	<b>3,366</b>	<b>100.0%</b>	<b>3,374</b>	<b>100.0%</b>

## Analysis of Racing by Size of Field

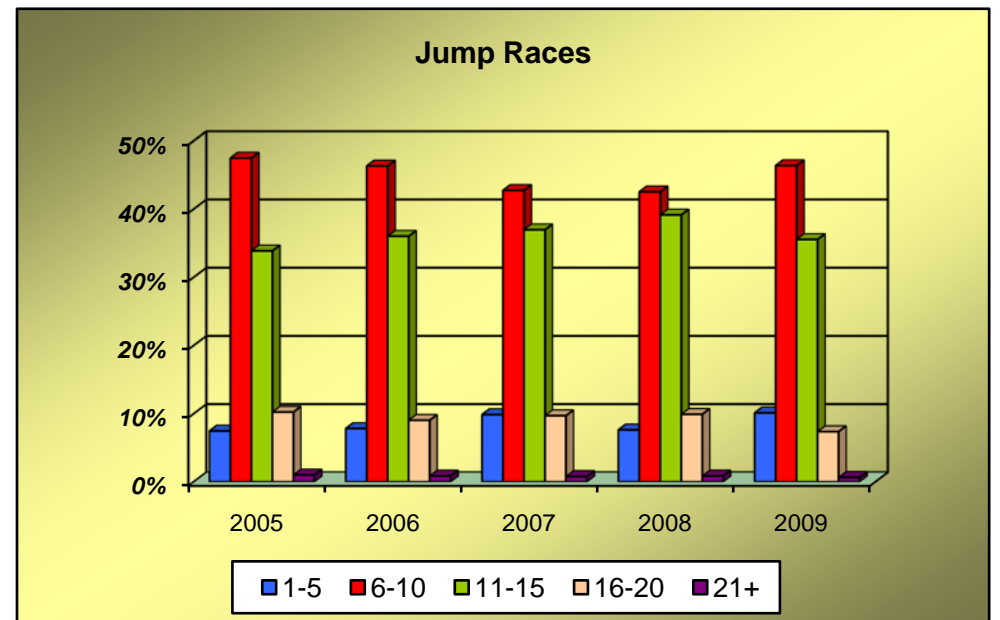
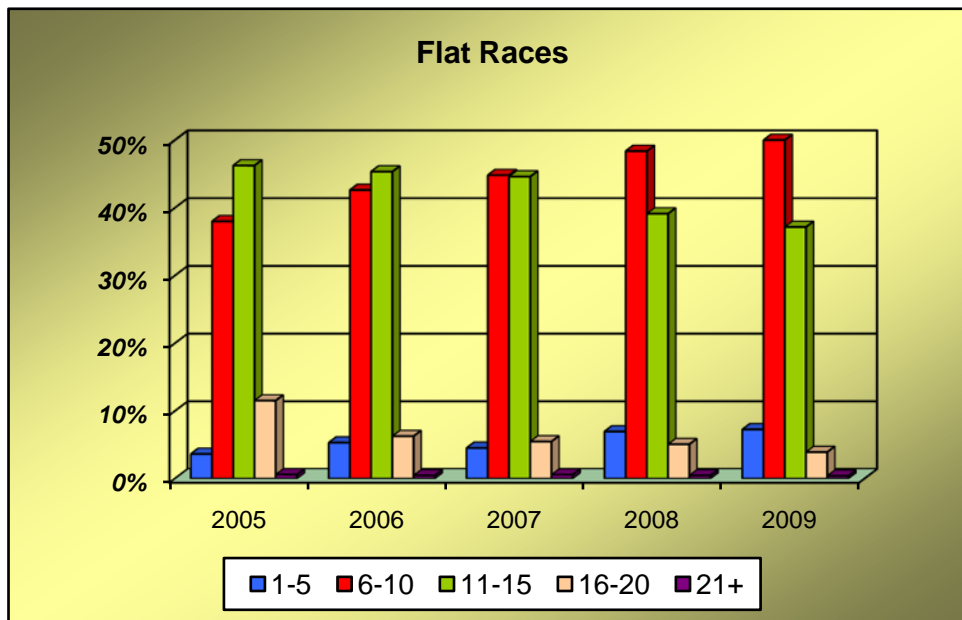
### Hurdle Races and National Hunt Flat Races

Runners	2005		2006		2007		2008		2009	
	Number of Races	% of All Races	Number of Races	% of All Races	Number of Races	% of All Races	Number of Races	% of All Races	Number of Races	% of All Races
1-5	57	2.9%	70	3.5%	72	3.8%	61	3.1%	82	4.1%
6-10	724	37.3%	759	37.8%	688	35.9%	657	32.9%	833	41.2%
11-15	849	43.7%	894	44.6%	877	45.8%	981	49.2%	898	44.4%
16-20	287	14.8%	266	13.3%	262	13.7%	272	13.6%	195	9.6%
21+	25	1.3%	17	0.8%	15	0.8%	23	1.2%	15	0.7%
<b>TOTAL</b>	<b>1,942</b>	<b>100.0%</b>	<b>2,006</b>	<b>100.0%</b>	<b>1,914</b>	<b>100.0%</b>	<b>1,994</b>	<b>100.0%</b>	<b>2,023</b>	<b>100.0%</b>

### Steeple Chases

Runners	2005		2006		2007		2008		2009	
	Number of Races	% of All Races	Number of Races	% of All Races	Number of Races	% of All Races	Number of Races	% of All Races	Number of Races	% of All Races
1-5	188	14.0%	194	14.1%	245 <sup>(1)</sup>	18.8%	195	14.2%	259	19.2%
6-10	836	62.2%	806	58.7%	687	52.7%	774	56.4%	731	54.1%
11-15	264	19.6%	323	23.5%	312	23.9%	336	24.5%	301	22.3%
16-20	49	3.6%	39	2.8%	50	3.8%	61	4.4%	53	3.9%
21+	8	0.6%	12	0.9%	10	0.8%	6	0.4%	7	0.5%
<b>TOTAL</b>	<b>1,345</b>	<b>100.0%</b>	<b>1,374</b>	<b>100.0%</b>	<b>1,304</b>	<b>100.0%</b>	<b>1,372</b>	<b>100.0%</b>	<b>1,351</b>	<b>100.0%</b>

## Analysis of Racing by Size of Field



## Analysis of Racing

### Number of Different Horses Which Ran, Number of Different Horses Which Won, Number of Races Divided Overnight, and Number of Horses Balloted Out Or Eliminated

#### Flat Racing

	2005	2006	2007	2008	2009
No. of Different Horses Which Ran as 2-y-o	3,100	2,952	3,226	3,313	3,176
No. of Different Horses Which Ran as 3-y-o	3,393	3,388	3,318	3,696	3,604
No. of Different Horses Which Ran as 4-y-o +	4,496	4,614	4,739	4,791	4,998
No. of Different Horses Which Ran - TOTAL	10,989	10,954	11,283	11,800	11,778
Average Number of Runs per Horse that Ran	5.5	5.4	5.3	5.3	5.3
No. of Different Horses Which Won a Race	3,552	3,641	3,782	4,016	4,057
No. of Races Divided Overnight	184	177	177	165	215
No. of Horses Balloted Out or Eliminated	14,758	13,982	12,653	10,876	10,924

#### Jump Racing

	2005	2006	2007	2008	2009
No. of Different Horses Which Ran	9,315	9,783	9,896	10,050	9,920
Average Number of Runs per Horse that Ran	3.7	3.6	3.4	3.6	3.4
No. of Different Horses Which Won a Race	2,291	2,325	2,267	2,327	2,350
No. of Races Divided Overnight	58	76	73	59	72
No. of Horses Balloted Out or Eliminated	1,996	4,451	4,907	5,292	3,839

## Racing and Prize Money Statistics

### Entries, Runners, Eliminations and Prize Money by Type of Race

#### Flat Races

2009

Type of Race	No. of Races	Entries		Runners		Eliminations		Value £	% of Total Value
		Total	Average	Total	Average	Total	Average		
<b>HANDICAPS</b>									
Sellers	13	314	24.2	159	12.2	41	3.2	46,650	0.1%
Apprentices	210	4,880	23.2	2,199	10.5	396	1.9	940,550	1.3%
Amateurs	98	2,245	22.9	1,214	12.4	263	2.7	439,350	0.6%
Others	3,490	82,634	23.7	35,533	10.2	8,108	2.3	30,094,718	40.9%
<b>Sub-Total</b>	<b>3,811</b>	<b>90,073</b>	<b>23.6</b>	<b>39,105</b>	<b>10.3</b>	<b>8,808</b>	<b>2.3</b>	<b>31,521,268</b>	<b>42.9%</b>
<b>WEIGHT FOR AGE</b>									
Sellers	260	5,906	22.7	2,605	10.0	380	1.5	865,050	1.2%
Claimers	315	6,514	20.7	2,651	8.4	248	0.8	1,149,006	1.6%
Maidens	1,325	33,580	25.3	12,946	9.8	765	0.6	7,232,937	9.8%
Novices	57	1,024	18.0	313	5.5	0	0.0	406,402	0.6%
Apprentices	20	442	22.1	213	10.7	35	1.8	62,500	0.1%
Amateurs	2	58	29.0	24	12.0	21	10.5	6,000	0.0%
Pattern	142	5,154	36.3	1,351	9.5	4	0.0	20,673,026	28.1%
Others	322	7,764	24.1	2,761	8.6	598	1.9	11,593,574	15.8%
<b>Sub-Total</b>	<b>2,443</b>	<b>60,442</b>	<b>24.7</b>	<b>22,864</b>	<b>9.4</b>	<b>2,051</b>	<b>0.8</b>	<b>41,988,495</b>	<b>57.1%</b>
<b>TOTAL</b>	<b>6,254</b>	<b>150,515</b>	<b>24.1</b>	<b>61,969</b>	<b>9.9</b>	<b>10,859</b>	<b>1.7</b>	<b>73,509,763</b>	<b>100.0%</b>

**Notes**

The above prize money figures have been rounded up or down as necessary. Consequently, the total prize money may not equate to the sum of the individual parts.



**Racing and Prize Money Statistics**  
**Entries, Runners, Eliminations and Prize Money by Type of Race**

**Jump Races**  
**2009**

Type of Race	No. of Races	Entries		Runners		Eliminations		Value £	% of Total Value
		Total	Average	Total	Average	Total	Average		
<b>HURDLE RACES</b>									
<b>HANDICAPS</b>									
Novices'	106	3,185	30.0	1,257	11.9	263	2.5	844,980	2.3%
Sellers	35	943	26.9	460	13.1	143	4.1	119,700	0.3%
Conditional Jockeys	101	3,381	33.5	1,271	12.6	294	2.9	578,700	1.6%
Amateurs	29	849	29.3	362	12.5	89	3.1	134,150	0.4%
Others	528	15,548	29.4	6,059	11.5	838	1.6	5,668,856	15.3%
<b>WEIGHT FOR AGE</b>									
Novices'	573	16,619	29.0	5,636	9.8	382	0.7	4,664,790	12.6%
Maidens	195	6,659	34.1	2,235	11.5	279	1.4	902,850	2.4%
Sellers	92	2,453	26.7	1,021	11.1	79	0.9	317,350	0.9%
Conditional Jockeys	20	577	28.9	200	10.0	3	0.2	80,150	0.2%
Amateurs	4	120	30.0	49	12.3	3	0.8	13,700	0.0%
Others	67	1,360	20.3	594	8.9	23	0.3	2,518,033	6.8%
National Hunt Flat Races	273	8,656	31.7	3,184	11.7	460	1.7	1,008,900	2.7%
<b>Sub-Total</b>	<b>2,023</b>	<b>60,350</b>	<b>29.8</b>	<b>22,328</b>	<b>11.0</b>	<b>2,856</b>	<b>1.4</b>	<b>16,852,159</b>	<b>45.6%</b>
<b>STEEPLE CHASES</b>									
<b>HANDICAPS</b>									
Novices'	134	2,997	22.4	1,196	8.9	76	0.6	1,162,012	3.1%
Sellers	6	119	19.8	62	10.3	3	0.5	24,200	0.1%
Conditional Jockeys	36	788	21.9	370	10.3	27	0.8	197,292	0.5%
Amateurs	11	300	27.3	120	10.9	24	2.2	156,450	0.4%
Hunters	2	38	19.0	24	12.0	0	0.0	16,000	0.0%
Others	657	15,047	22.9	6,348	9.7	417	0.6	10,579,479	28.6%
<b>WEIGHT FOR AGE</b>									
Novices'	348	6,136	17.6	2,115	6.1	8	0.0	4,164,405	11.3%
Maidens	13	248	19.1	115	8.8	0	0.0	71,500	0.2%
Amateurs	3	106	35.3	35	11.7	11	3.7	97,000	0.3%
Hunters	102	2,400	23.5	1,016	10.0	83	0.8	456,400	1.2%
Others	39	733	18.8	298	7.6	3	0.1	3,174,377	8.6%
<b>Sub-Total</b>	<b>1,351</b>	<b>28,912</b>	<b>21.4</b>	<b>11,699</b>	<b>8.7</b>	<b>652</b>	<b>0.5</b>	<b>20,099,115</b>	<b>54.4%</b>
<b>GRAND TOTAL</b>	<b>3,374</b>	<b>89,262</b>	<b>26.5</b>	<b>34,027</b>	<b>10.1</b>	<b>3,508</b>	<b>1.0</b>	<b>36,951,274</b>	<b>100.0%</b>

**Notes**

The above prize money figures have been rounded up or down as necessary. Consequently, the total prize money may not equate to the sum of the individual parts.

## Racing and Prize Money Statistics

### Entries, Runners, Eliminations and Prize Money by Distance of Race

#### Hurdle Races and National Hunt Flat Races

2009

Distance of Race	No. of Races	Entries		Runners		Eliminations		Value £	% of Total Value
		Total	Average	Total	Average	Total	Average		
<b>HANDICAPS</b>									
2 Miles	266	7,402	27.8	3,065	11.5	371	1.4	2,618,580	15.5%
2 ¼ Miles	80	2,285	28.6	911	11.4	104	1.3	579,635	3.4%
2 ½ Miles	198	6,333	32.0	2,397	12.1	610	3.1	1,922,071	11.4%
2 ¾ Miles	98	3,076	31.4	1,131	11.5	157	1.6	782,950	4.6%
3 Miles and over	157	4,810	30.6	1,905	12.1	385	2.5	1,443,150	8.6%
<b>Sub-Total</b>	<b>799</b>	<b>23,906</b>	<b>29.9</b>	<b>9,409</b>	<b>11.8</b>	<b>1,627</b>	<b>2.0</b>	<b>7,346,386</b>	<b>43.6%</b>
<b>WEIGHT FOR AGE</b>									
2 Miles	697	20,678	29.7	7,644	11.0	773	1.1	5,082,491	30.2%
2 ¼ Miles	130	3,710	28.5	1,288	9.9	106	0.8	595,100	3.5%
2 ½ Miles	239	7,626	31.9	2,461	10.3	241	1.0	2,015,863	12.0%
2 ¾ Miles	73	2,168	29.7	733	10.0	66	0.9	403,638	2.4%
3 Miles and over	85	2,262	26.6	793	9.3	43	0.5	1,408,682	8.4%
<b>Sub-Total</b>	<b>1,224</b>	<b>36,444</b>	<b>29.8</b>	<b>12,919</b>	<b>10.6</b>	<b>1,229</b>	<b>1.0</b>	<b>9,505,774</b>	<b>56.4%</b>
<b>TOTAL</b>	<b>2,023</b>	<b>60,350</b>	<b>29.8</b>	<b>22,328</b>	<b>11.0</b>	<b>2,856</b>	<b>1.4</b>	<b>16,852,159</b>	<b>100.0%</b>

**Notes**

The above prize money figures have been rounded up or down as necessary. Consequently, the total prize money may not equate to the sum of the individual parts.

## Racing and Prize Money Statistics

### Entries, Runners, Eliminations and Prize Money by Distance of Race

#### Steeple Chases

2009

Distance of Race	No. of Races	Entries		Runners		Eliminations		Value £	% of Total Value
		Total	Average	Total	Average	Total	Average		
<b>HANDICAPS</b>									
2 Miles	162	2,893	17.9	1,400	8.6	21	0.1	1,741,622	8.7%
2 ¼ Miles	61	1,207	19.8	566	9.3	7	0.1	579,781	2.9%
2 ½ Miles	209	4,773	22.8	1,931	9.2	98	0.5	2,626,297	13.1%
2 ¾ Miles	94	2,282	24.3	923	9.8	115	1.2	1,129,825	5.6%
3 Miles and over	320	8,134	25.4	3,300	10.3	306	1.0	6,057,908	30.1%
<b>Sub-Total</b>	<b>846</b>	<b>19,289</b>	<b>22.8</b>	<b>8,120</b>	<b>9.6</b>	<b>547</b>	<b>0.6</b>	<b>12,135,433</b>	<b>60.4%</b>
<b>WEIGHT FOR AGE</b>									
2 Miles	105	1,717	16.4	670	6.4	1	0.0	2,045,478	10.2%
2 ¼ Miles	34	678	19.9	257	7.6	1	0.0	366,959	1.8%
2 ½ Miles	135	2,647	19.6	946	7.0	11	0.1	1,780,424	8.9%
2 ¾ Miles	65	1,348	20.7	468	7.2	49	0.8	649,745	3.2%
3 Miles and over	166	3,233	19.5	1,238	7.5	43	0.3	3,121,076	15.5%
<b>Sub-Total</b>	<b>505</b>	<b>9,623</b>	<b>19.1</b>	<b>3,579</b>	<b>7.1</b>	<b>105</b>	<b>0.2</b>	<b>7,963,682</b>	<b>39.6%</b>
<b>TOTAL</b>	<b>1,351</b>	<b>28,912</b>	<b>21.4</b>	<b>11,699</b>	<b>8.7</b>	<b>652</b>	<b>0.5</b>	<b>20,099,115</b>	<b>100.0%</b>

**Notes**

The above prize money figures have been rounded up or down as necessary. Consequently, the total prize money may not equate to the sum of the individual parts.

## Prize Money by Source for Pattern Races

### Flat Racing

2009

Prize Money Contributions				
Racecourse	No. of Races	Racecourse Executive plus Sponsors £	Owners' Contribution £	Total Prize Fund £
ASCOT	29	3,787,878	1,733,630	5,521,508
AYR	1	61,250	8,750	70,000
CHESTER	4	251,668	21,275	272,943
DONCASTER	8	985,400	373,300	1,358,700
EPSOM DOWNS	5	1,332,600	640,150	1,972,750
GOODWOOD	16	1,359,623	258,300	1,617,923
HAYDOCK PARK	5	492,150	131,400	623,550
KEMPTON PARK	2	102,775	12,225	115,000
LINGFIELD PARK	3	213,173	15,950	229,123
NEWBURY	12	858,465	141,535	1,000,000
NEWCASTLE	1	59,400	6,600	66,000
NEWMARKET	30	2,855,678	1,340,210	4,195,888
SALISBURY	1	61,500	3,500	65,000
SANDOWN PARK	8	785,850	224,150	1,010,000
WINDSOR	1	66,000	4,000	70,000
YORK	16	1,917,753	566,890	2,484,643
<b>TOTAL</b>	<b>142</b>	<b>15,191,161</b>	<b>5,481,865</b>	<b>20,673,026</b>

#### **NOTES**

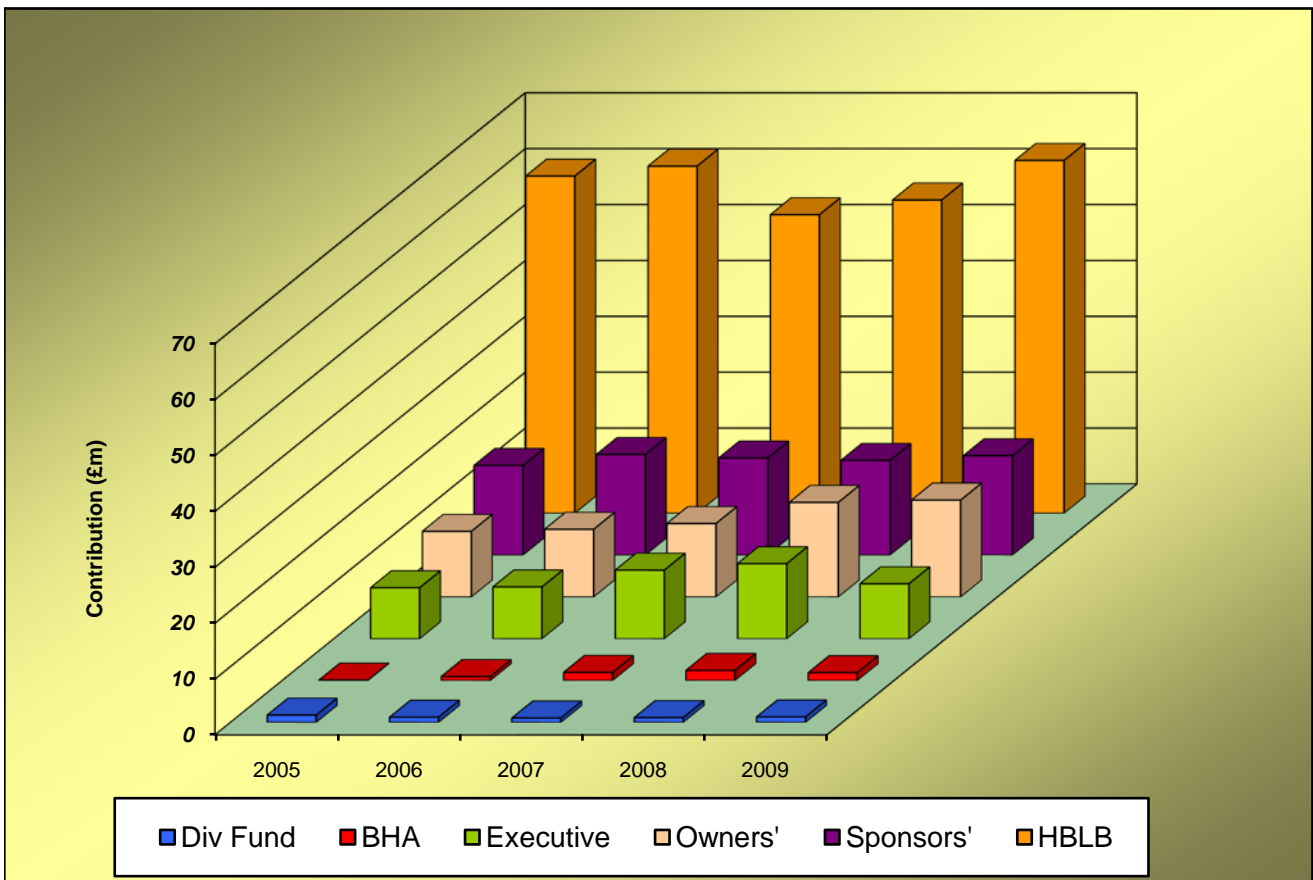
The above prize money figures have been rounded up or down as necessary. Consequently, the total prize money may not equate to the sum of the individual parts.

## Breakdown of Prize Money by Source

	£ Million						TOTAL
	Executive	Sponsors'	HBLB	Owners'	BHA	Div Fund	
<b>2005</b>	9.13	16.04	60.32	11.72	0.07	1.30	<b>98.57</b>
<b>2006</b>	9.26	18.00	62.10	12.10	0.71	0.92	<b>103.10</b>
<b>2007</b>	12.27	17.37	53.42	13.13	1.46	0.78	<b>98.43</b>
<b>2008</b>	13.42	16.95	56.06	16.91	1.81	0.85	<b>106.00</b>
<b>2009</b>	9.83	17.78	63.14	17.32	1.41	0.97	<b>110.46</b>

**Notes**

The above figures have been rounded to two decimal places.  
 Consequently, the TOTAL column will not always equate to the sum of the individual parts.



## Comparison of Flat/Jump Prize Money Pools

### Prize Money Statistics

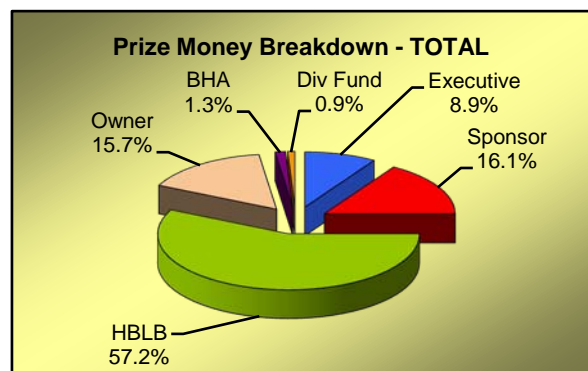
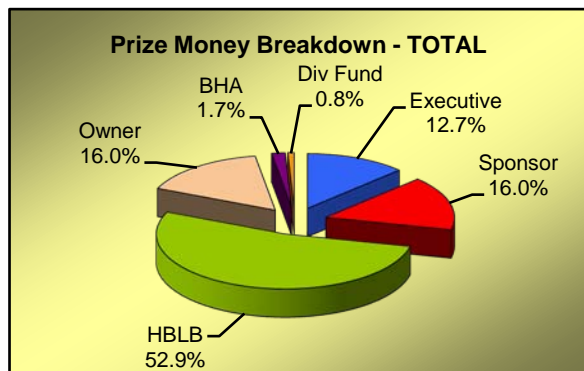
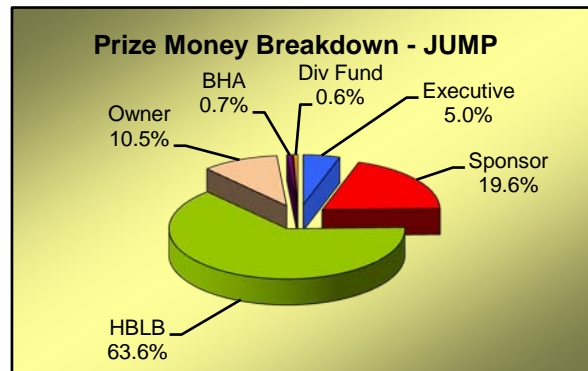
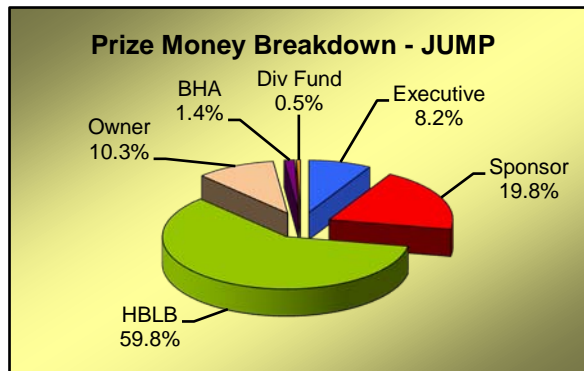
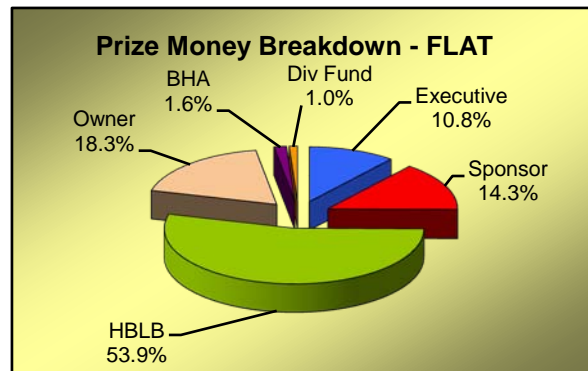
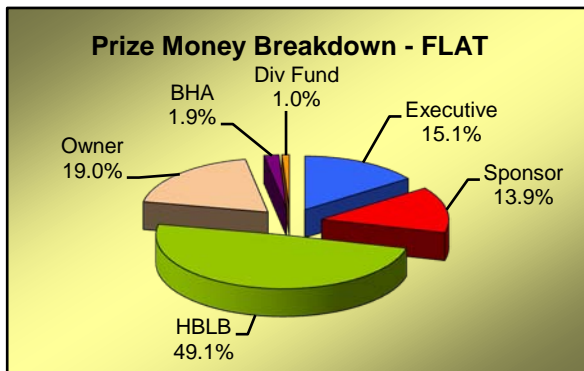
2008

	Flat	Jump	TOTAL
<b>Executive</b>	10,372,765	3,052,157	<b>13,424,922</b>
<b>Sponsor</b>	9,571,099	7,379,031	<b>16,950,130</b>
<b>HBLB</b>	33,757,268	22,301,997	<b>56,059,265</b>
<b>Owner</b>	13,064,969	3,844,172	<b>16,909,141</b>
<b>BHA</b>	1,303,256	508,500	<b>1,811,756</b>
<b>Div Fund</b>	653,300	192,000	<b>845,300</b>
<b>TOTAL</b>	<b>68,722,658</b>	<b>37,277,856</b>	<b>106,000,514</b>

### Prize Money Statistics

2009

	Flat	Jump	TOTAL
<b>Executive</b>	7,974,056	1,859,364	<b>9,833,419</b>
<b>Sponsor</b>	10,542,718	7,235,181	<b>17,777,899</b>
<b>HBLB</b>	39,644,428	23,491,777	<b>63,136,205</b>
<b>Owner</b>	13,453,611	3,871,002	<b>17,324,613</b>
<b>BHA</b>	1,143,000	271,500	<b>1,414,500</b>
<b>Div Fund</b>	751,950	222,450	<b>974,400</b>
<b>TOTAL</b>	<b>73,509,763</b>	<b>36,951,274</b>	<b>110,461,037</b>



**Notes**

The above figures have been rounded up or down as necessary. Consequently, the totals will not always equate to the sum of the individual parts.

## Total Prize Money by Racecourse Flat Racing - 2009

	Fixtures Ran (Aban)	Exec+Spons	HBLB	Owners	BHA	Div Fund	TOTAL
ASCOT	17	3,570,036	2,465,200	2,225,427	67,500	0	8,328,163
AYR	16	318,568	730,980	161,602	11,000	26,000	1,248,150
BATH	21	143,186	515,667	67,034	10,000	3,000	738,886
BEVERLEY	19	175,638	574,590	62,172	28,500	8,750	849,650
BRIGHTON	20	46,472	529,070	66,035	0	6,300	647,877
CARLISLE	8	58,135	232,740	37,390	0	0	328,265
CATTERICK BRIDGE	18	30,108	488,823	41,205	7,500	19,500	587,136
CHEPSTOW	14	40,531	297,000	45,519	2,000	14,000	399,050
CHESTER	13	480,147	887,710	80,560	49,000	0	1,497,417
DONCASTER	23	1,070,315	1,685,600	988,622	57,500	31,500	3,833,537
EPSOM DOWNS	14	1,191,553	998,360	737,857	25,000	0	2,952,770
FFOS LAS	3	31,394	120,000	14,106	0	3,000	168,500
FOLKESTONE	15	44,175	382,010	48,975	0	3,000	478,160
GOODWOOD	23	1,174,931	1,997,170	512,426	64,000	4,000	3,752,527
GREAT LEIGHS	4	-790	103,000	6,190	0	0	108,400
HAMILTON PARK	18 (1)	224,282	513,800	55,777	34,000	2,500	830,359
HAYDOCK PARK	23	721,517	1,232,144	360,689	52,000	8,000	2,374,350
KEMPTON PARK	86	207,460	2,928,970	334,183	59,000	86,550	3,616,163
LEICESTER	20	211,705	549,897	69,551	46,000	13,000	890,153
LINGFIELD PARK	93	586,266	2,901,660	321,708	77,500	102,850	3,989,984
MUSSELBURGH	17	228,524	480,380	54,096	20,000	3,000	786,000
NEWBURY	18	617,086	1,454,030	413,384	70,000	78,000	2,632,500
NEWCASTLE	19	254,661	667,900	137,968	5,000	17,150	1,082,679
NEWMARKET	38	2,994,179	3,731,210	3,742,521	154,500	28,000	10,650,410
NOTTINGHAM	20	106,637	539,510	114,287	40,000	28,500	828,934
PONTEFRACT	16	202,764	692,640	63,887	27,500	22,000	1,008,791
REDCAR	18 (1)	88,061	534,200	221,739	6,000	4,000	854,000
RIPON	15	211,040	583,990	66,175	26,000	5,000	892,205
SALISBURY	16	216,935	623,180	84,684	39,000	33,700	997,499
SANDOWN PARK	19	554,123	1,410,535	362,382	41,500	0	2,368,540
SOUTHWELL	64	5,366	1,877,490	154,309	2,000	35,200	2,074,365
THIRSK	14	144,504	476,840	79,251	12,500	21,100	734,195
WARWICK	13	66,228	408,830	63,552	13,000	17,250	568,860
WINDSOR	27	236,486	785,250	120,568	31,000	20,000	1,193,304
WOLVERHAMPTON	98 (3)	26,342	3,024,872	306,461	10,000	82,500	3,450,175
YARMOUTH	24	136,432	571,720	100,714	9,500	24,600	842,966
YORK	17	2,101,778	1,647,460	1,130,605	45,000	0	4,924,843
<b>TOTAL</b>	<b>921 (5)</b>	<b>18,516,774</b>	<b>39,644,428</b>	<b>13,453,611</b>	<b>1,143,000</b>	<b>751,950</b>	<b>73,509,763</b>

### Notes

The above figures have been rounded up or down as necessary. Consequently, the totals will not always equate to the sum of the individual parts. Mixed meetings are included with the Flat figures.

## Total Prize Money by Racecourse Jump Racing - 2009

	Fixtures Ran (Aban)	Exec+Spons	HBLB	Owners	BHA	Div Fund	TOTAL
AINTREE	9	1,652,752	1,185,950	459,890	0	0	3,298,592
ASCOT	6 (2)	511,576	649,300	77,381	25,000	0	1,263,257
AYR	10 (3)	161,498	586,530	132,848	15,000	3,300	899,176
BANGOR-ON-DEE	14 (1)	95,365	576,190	39,320	1,500	9,750	722,125
CARLISLE	10 (3)	90,115	368,650	42,135	0	0	500,900
CARTMEL	6	31,670	162,360	25,370	0	0	219,400
CATTERICK BRIDGE	6 (4)	45,547	133,710	18,543	0	0	197,800
CHEL TENHAM	17	2,997,024	2,013,740	894,923	80,000	4,000	5,989,687
CHEPSTOW	14 (1)	143,957	572,870	96,646	20,000	8,500	841,973
DONCASTER	8	288,509	413,417	100,513	25,000	8,000	835,439
EXETER	14 (2)	26,460	640,243	78,349	0	2,500	747,552
FAKENHAM	10 (1)	83,250	319,225	0	0	0	402,475
FFOS LAS	6	88,138	223,200	30,994	0	0	342,332
FOLKESTONE	7 (2)	445	245,460	27,595	1,500	0	275,000
FONTWELL PARK	21 (2)	59,981	754,740	87,086	0	0	901,807
HAYDOCK PARK	7 (2)	533,424	600,886	127,275	28,000	0	1,289,585
HEREFORD	13 (2)	40,826	471,420	68,016	0	3,300	583,562
HEXHAM	13 (2)	-1,881	434,900	47,681	0	6,800	487,500
HUNTINGDON	16 (3)	65,594	554,790	71,581	0	11,500	703,465
KELSO	13 (2)	107,681	548,820	38,211	0	9,500	704,212
KEMPTON PARK	12 (1)	274,518	981,600	127,591	20,000	6,500	1,410,209
LEICESTER	7 (4)	18,847	268,680	27,645	0	0	315,172
LINGFIELD PARK	5 (2)	221	229,270	23,920	0	0	253,411
LUDLOW	14 (2)	109,418	576,040	49,530	1,500	0	736,488
MARKET RASEN	19 (3)	92,403	795,170	88,198	1,500	4,000	981,271
MUSSELBURGH	7 (4)	30,520	292,420	21,560	0	4,000	348,500
NEWBURY	10 (2)	167,337	890,800	124,710	14,500	5,000	1,202,347
NEWCASTLE	8 (3)	111,507	344,820	52,806	0	4,400	513,533
NEWTON ABBOT	18	21,911	627,240	5,264	0	20,300	674,715
PERTH	12 (1)	79,462	488,770	45,857	0	5,000	619,089
PLUMPTON	13 (3)	1,827	425,300	29,565	0	4,000	460,692
SANDOWN PARK	8 (1)	430,762	785,575	121,535	0	0	1,337,872
SEDFIELD	15 (4)	91,058	261,010	48,032	0	8,400	408,500
SOUTHWELL	14 (1)	15,727	465,190	64,076	0	9,100	554,093
STRATFORD-ON-AVON	18	202,515	664,870	66,201	1,500	16,000	951,086
TAUNTON	13 (1)	28,461	512,810	40,549	0	18,700	600,520
TOWCESTER	16 (1)	4,976	545,800	52,990	0	0	603,766
UTTOXETER	23 (2)	99,283	799,850	144,690	0	11,000	1,054,823
WARWICK	8 (2)	-4,002	336,700	43,950	0	0	376,648
WETHERBY	13 (5)	132,830	545,600	57,994	20,000	3,000	759,424
WINCANTON	16 (1)	149,044	734,550	102,657	16,500	9,500	1,012,251
WORCESTER	16	13,987	463,312	67,325	0	26,400	571,024
<b>TOTAL</b>	<b>505 (75)</b>	<b>9,094,545</b>	<b>23,491,777</b>	<b>3,871,002</b>	<b>271,500</b>	<b>222,450</b>	<b>36,951,274</b>

### Notes

The above figures have been rounded up or down as necessary. Consequently, the totals will not always equate to the sum of the individual parts.



## Total Prize Money by Racecourse All Racing - 2009

	Fixtures Ran (Aban)	Exec+Spons	HBLB	Owners	BHA	Div Fund	TOTAL
AINTREE	9	1,652,752	1,185,950	459,890	0	0	3,298,592
ASCOT	23 (2)	4,081,612	3,114,500	2,302,808	92,500	0	9,591,420
AYR	26 (3)	480,066	1,317,510	294,450	26,000	29,300	2,147,326
BANGOR-ON-DEE	14 (1)	95,365	576,190	39,320	1,500	9,750	722,125
BATH	21	143,186	515,667	67,034	10,000	3,000	738,886
BEVERLEY	19	175,638	574,590	62,172	28,500	8,750	849,650
BRIGHTON	20	46,472	529,070	66,035	0	6,300	647,877
CARLISLE	18 (3)	148,250	601,390	79,525	0	0	829,165
CARTMEL	6	31,670	162,360	25,370	0	0	219,400
CATTERICK BRIDGE	24 (4)	75,655	622,533	59,748	7,500	19,500	784,936
CHELTENHAM	17	2,997,024	2,013,740	894,923	80,000	4,000	5,989,687
CHEPSTOW	28 (1)	184,488	869,870	142,165	22,000	22,500	1,241,023
CHESTER	13	480,147	887,710	80,560	49,000	0	1,497,417
DONCASTER	31	1,358,824	2,099,017	1,089,135	82,500	39,500	4,668,976
EPSOM DOWNS	14	1,191,553	998,360	737,857	25,000	0	2,952,770
EXETER	14 (2)	26,460	640,243	78,349	0	2,500	747,552
FAKENHAM	10 (1)	83,250	319,225	0	0	0	402,475
FFOS LAS	9	119,532	343,200	45,100	0	3,000	510,832
FOLKESTONE	22 (2)	44,620	627,470	76,570	1,500	3,000	753,160
FONTWELL PARK	21 (2)	59,981	754,740	87,086	0	0	901,807
GOODWOOD	23	1,174,931	1,997,170	512,426	64,000	4,000	3,752,527
GREAT LEIGHS	4	-790	103,000	6,190	0	0	108,400
HAMILTON PARK	18 (1)	224,282	513,800	55,777	34,000	2,500	830,359
HAYDOCK PARK	30 (2)	1,254,941	1,833,030	487,964	80,000	8,000	3,663,935
HEREFORD	13 (2)	40,826	471,420	68,016	0	3,300	583,562
HEXHAM	13 (2)	-1,881	434,900	47,681	0	6,800	487,500
HUNTINGDON	16 (3)	65,594	554,790	71,581	0	11,500	703,465
KELSO	13 (2)	107,681	548,820	38,211	0	9,500	704,212
KEMPTON PARK	98 (1)	481,978	3,910,570	461,774	79,000	93,050	5,026,372
LEICESTER	27 (4)	230,552	818,577	97,196	46,000	13,000	1,205,324
LINGFIELD PARK	98 (2)	586,487	3,130,930	345,628	77,500	102,850	4,243,395
LUDLOW	14 (2)	109,418	576,040	49,530	1,500	0	736,488
MARKET RASEN	19 (3)	92,403	795,170	88,198	1,500	4,000	981,271
MUSSELBURGH	24 (4)	259,044	772,800	75,656	20,000	7,000	1,134,500
NEWBURY	28 (2)	784,423	2,344,830	538,094	84,500	83,000	3,834,847
NEWCASTLE	27 (3)	366,168	1,012,720	190,774	5,000	21,550	1,596,212
NEWMARKET	38	2,994,179	3,731,210	3,742,521	154,500	28,000	10,650,410
NEWTON ABBOT	18	21,911	627,240	5,264	0	20,300	674,715
NOTTINGHAM	20	106,637	539,510	114,287	40,000	28,500	828,934
PERTH	12 (1)	79,462	488,770	45,857	0	5,000	619,089
PLUMPTON	13 (3)	1,827	425,300	29,565	0	4,000	460,692
PONTEFRAC	16	202,764	692,640	63,887	27,500	22,000	1,008,791
REDCAR	18 (1)	88,061	534,200	221,739	6,000	4,000	854,000
RIPON	15	211,040	583,990	66,175	26,000	5,000	892,205
SALISBURY	16	216,935	623,180	84,684	39,000	33,700	997,499
SANDOWN PARK	27 (1)	984,885	2,196,110	483,917	41,500	0	3,706,412
SEDFIELD	15 (4)	91,058	261,010	48,032	0	8,400	408,500
SOUTHWELL	78 (1)	21,093	2,342,680	218,385	2,000	44,300	2,628,458
STRATFORD-ON-AVON	18	202,515	664,870	66,201	1,500	16,000	951,086
TAUNTON	13 (1)	28,461	512,810	40,549	0	18,700	600,520
THIRSK	14	144,504	476,840	79,251	12,500	21,100	734,195
TOWCESTER	16 (1)	4,976	545,800	52,990	0	0	603,766
UTTOXETER	23 (2)	99,283	799,850	144,690	0	11,000	1,054,823
WARWICK	21 (2)	62,226	745,530	107,502	13,000	17,250	945,508
WETHERBY	13 (5)	132,830	545,600	57,994	20,000	3,000	759,424
WINCANTON	16 (1)	149,044	734,550	102,657	16,500	9,500	1,012,251
WINDSOR	27	236,486	785,250	120,568	31,000	20,000	1,193,304
WOLVERHAMPTON	98 (3)	26,342	3,024,872	306,461	10,000	82,500	3,450,175
WORCESTER	16	13,987	463,312	67,325	0	26,400	571,024
YARMOUTH	24	136,432	571,720	100,714	9,500	24,600	842,966
YORK	17	2,101,778	1,647,460	1,130,605	45,000	0	4,924,843
<b>TOTAL</b>	<b>1,426 (80)</b>	<b>27,611,318</b>	<b>63,136,205</b>	<b>17,324,613</b>	<b>1,414,500</b>	<b>974,400</b>	<b>110,461,037</b>

### Notes

The above figures have been rounded up or down as necessary. Consequently, the totals will not always equate to the sum of the individual parts. Mixed meetings are included with the Flat figures.

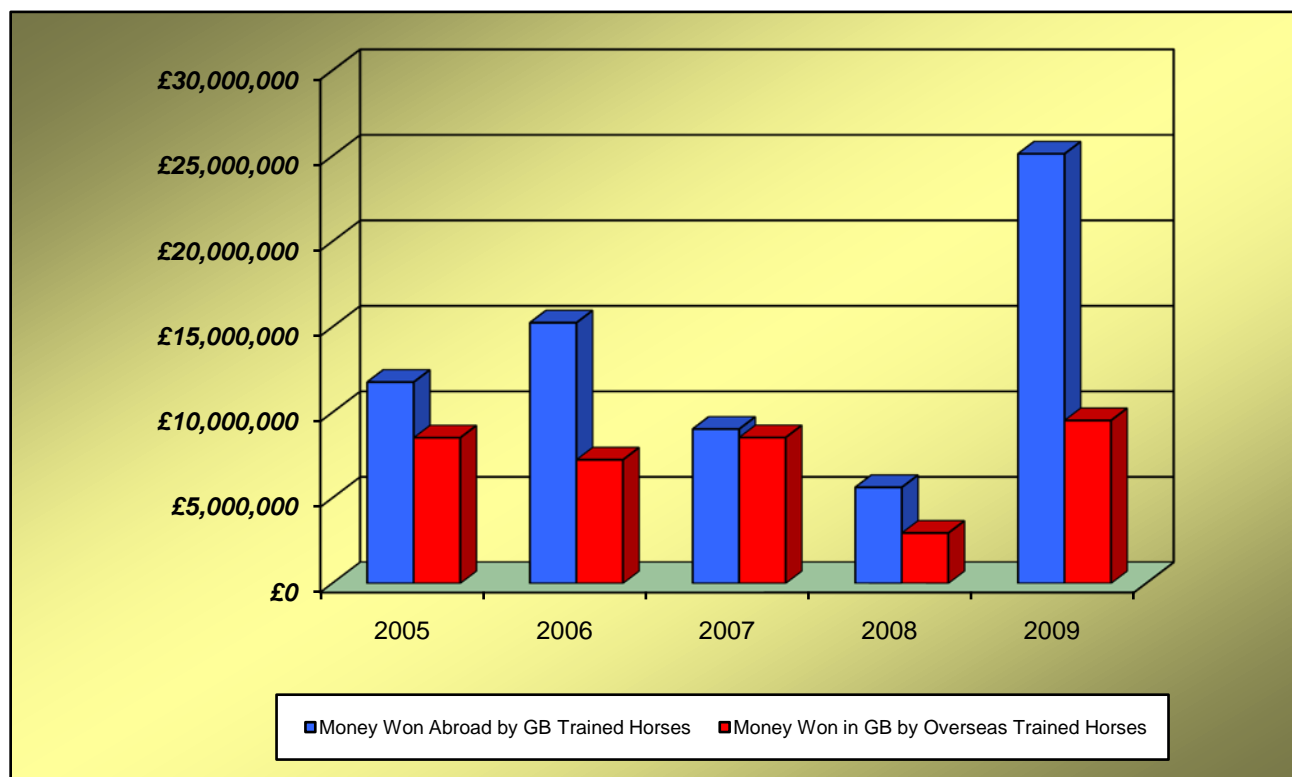
## Sponsored Number Cloth Income

**2009**

	FLAT	JUMP	TOTAL
AINTREE		16,750	16,750
ASCOT	33,250	8,500	41,750
AYR	3,250	2,000	5,250
BANGOR-ON-DEE		500	500
BATH	0		0
BEVERLEY	1,000		1,000
BRIGHTON	0		0
CARLISLE	0	500	500
CARTMEL		0	0
CATTERICK BRIDGE	0	0	0
CHELTENHAM		22,250	22,250
CHEPSTOW	0	3,250	3,250
CHESTER	8,750		8,750
DONCASTER	10,750	2,250	13,000
EPSOM DOWNS	8,000		8,000
EXETER		250	250
FAKENHAM		0	0
FFOS LAS	0	250	250
FOLKESTONE	0	0	0
FONTWELL PARK		500	500
GOODWOOD	12,750		12,750
GREAT LEIGHS	0		0
HAMILTON PARK	750		750
HAYDOCK PARK	9,000	5,500	14,500
HEREFORD		0	0
HEXHAM		0	0
HUNTINGDON		0	0
KELSO		250	250
KEMPTON PARK	9,500	6,000	15,500
LEICESTER	0	0	0
LINGFIELD PARK	6,500	0	6,500
LUDLOW		0	0
MARKET RASEN		3,000	3,000
MUSSELBURGH	1,750	0	1,750
NEWBURY	13,500	4,500	18,000
NEWCASTLE	4,000	2,000	6,000
NEWMARKET	30,500		30,500
NEWTON ABBOT		0	0
NOTTINGHAM	1,500		1,500
PERTH		0	0
PLUMPTON		0	0
PONTEFRACT	250		250
REDCAR	500		500
RIPON	1,750		1,750
SALISBURY	1,000		1,000
SANDOWN PARK	5,000	7,750	12,750
SEDFIELD		0	0
SOUTHWELL	0	0	0
STRATFORD-ON-AVON		0	0
TAUNTON		0	0
THIRSK	0		0
TOWCESTER		0	0
UTTOXETER		3,500	3,500
WARWICK	250	0	250
WETHERBY		3,500	3,500
WINCANTON		3,500	3,500
WINDSOR	250		250
WOLVERHAMPTON	1,000		1,000
WORCESTER		0	0
YARMOUTH	0		0
YORK	21,000		21,000
<b>TOTAL</b>	<b>185,750</b>	<b>96,500</b>	<b>282,250</b>

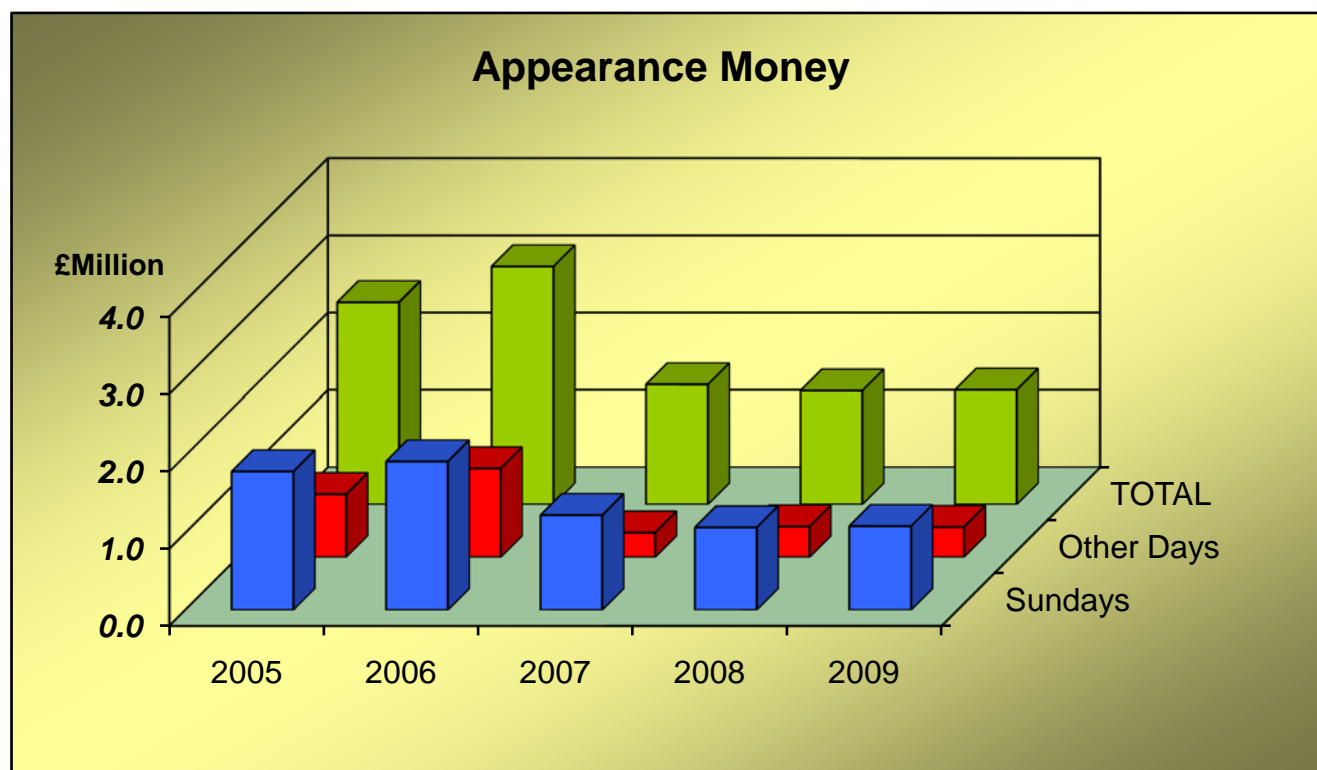
## Prize Money Entering and Leaving Great Britain

	2005	2006	2007	2008	2009
<b>Prize Money WON ABROAD</b>					
by horses trained in Great Britain	11,777,096	15,247,516	9,028,843	5,621,876	25,124,821
<b>Prize Money WON IN GREAT BRITAIN</b>					
by horses trained outside of Great Britain	8,521,477	7,231,583	8,533,123	2,947,770	9,531,883



## Appearance Money and Owners' Premium Payments

	2005	2006	2007	2008	2009
	£	£	£	£	£
<b>APPEARANCE MONEY</b>					
Sundays	1,795,330	1,925,050	1,229,840	1,069,450	1,087,350
Other Days	816,510	1,150,950	318,800	398,500	391,100
<b>TOTAL</b>	<b>2,611,840</b>	<b>3,076,000</b>	<b>1,548,640</b>	<b>1,467,950</b>	<b>1,478,450</b>
<b>OWNERS' PREMIUMS</b>					
	446,860	707,854	N/A	N/A	N/A



# **SECTION E**

## **RACECOURSES**

### **TABLE 1**

#### **Racecourse Activities**

The number of Fixtures that took place and that were Abandoned, the number of Races, Entries and Runners, and the total Public Attendance for each Racecourse. Average Runners per Race and Average Daily Attendance is also shown. Mixed Fixtures are counted as Flat Fixtures for the purposes of these tables. A separate table is shown for Flat Racing, Jump Racing and All Racing.

### **TABLE 2**

#### **Monthly Attendance Figures**

The total Public Attendances at Racecourses each month by Flat, Jump and Total for the last 5 years. Mixed Meeting Attendances are included with the Flat figures.

### **TABLE 3**

#### **Daily Spread of Public Attendances**

An analysis of Public Attendances at Racecourses, Flat and Jump shown separately, on each day of the week and Bank Holidays during the year, for the last 5 years. Mixed Meeting Attendances are included with the Flat figures.

# Racecourse Activities 2009 Flat

Racecourse	Fixtures	Abandoned	Races	Entries	Runners	Ave Runners	Attendance	Ave Attendance
ASCOT	17		106	3,465	1,299	12.3	472,093	27,770
AYR	16		114	2,768	1,201	10.5	58,767	3,673
BATH	21		133	2,963	1,248	9.4	48,171	2,294
BEVERLEY	19		134	3,309	1,391	10.4	87,630	4,612
BRIGHTON	20		132	2,859	1,173	8.9	35,589	1,779
CARLISLE	8		54	1,386	564	10.4	32,915	4,114
CATTERICK BRIDGE	18		122	2,787	1,207	9.9	31,222	1,735
CHEPSTOW	14		87	2,287	973	11.2	30,696	2,193
CHESTER	13		80	1,729	700	8.8	249,382	19,183
DONCASTER	23		154	4,932	1,739	11.3	156,725	6,814
EPSOM DOWNS	14		88	2,291	759	8.6	113,050	8,075
FFOS LAS	3		21	460	180	8.6	12,600	4,200
FOLKESTONE	15		96	2,229	791	8.2	23,798	1,587
GOODWOOD	23		158	4,030	1,666	10.5	213,239	9,271
GREAT LEIGHS	4		24	431	192	8.0	-	-
HAMILTON PARK	18	1	120	2,420	992	8.3	50,898	2,828
HAYDOCK PARK	23		142	4,092	1,284	9.0	139,170	6,051
KEMPTON PARK	86		597	12,553	5,987	10.0	71,174	828
LEICESTER	20		133	3,824	1,245	9.4	27,262	1,363
LINGFIELD PARK	93		651	13,286	6,069	9.3	120,171	1,292
MUSSELBURGH	17		116	2,092	1,022	8.8	43,612	2,565
NEWBURY	18		131	3,569	1,438	11.0	136,826	7,601
NEWCASTLE	19		130	3,567	1,341	10.3	82,404	4,337
NEWMARKET	38		268	7,963	2,777	10.4	338,949	8,920
NOTTINGHAM	20		139	4,432	1,509	10.9	28,712	1,436
PONTEFRACT	16		111	2,948	1,058	9.5	79,921	4,995
REDCAR	18	1	127	3,939	1,451	11.4	48,659	2,703
RIPON	15		97	2,310	983	10.1	72,453	4,830
SALISBURY	16		111	2,912	1,110	10.0	54,721	3,420
SANDOWN PARK	19		115	2,759	1,046	9.1	116,643	6,139
SOUTHWELL	64		442	7,845	4,074	9.2	59,714	933
THIRSK	14		94	2,537	1,011	10.8	55,175	3,941
WARWICK	13		89	2,644	863	9.7	26,299	2,023
WINDSOR	27		170	4,463	1,778	10.5	108,947	4,035
WOLVERHAMPTON	98	3	689	14,662	6,809	9.9	70,845	723
YARMOUTH	24		168	4,304	1,659	9.9	63,631	2,651
YORK	17		111	3,468	1,380	12.4	322,232	18,955
<b>TOTAL</b>	<b>921</b>	<b>5</b>	<b>6,254</b>	<b>150,515</b>	<b>61,969</b>	<b>9.9</b>	<b>3,684,295</b>	<b>4,018</b>

## Notes

Mixed attendances are included with the Flat figures.

No attendance figures were reported for the 4 Great Leighs fixtures

# Racecourse Activities

## 2009

### Flat

#### Notes

##### AYR

- a) 5 races abandoned - unsafe ground

##### YARMOUTH

- a) 2 fixtures re-allocated from Great Leighs

##### BATH

- a) 3 fixtures re-allocated from Great Leighs (AWT)

##### BRIGHTON

- a) 1 fixture re-allocated from Great Leighs (AWT)

##### FFOS LAS

- a) 1 fixture re-allocated from Great Leighs (AWT)

##### GREAT LEIGHS

- a) 4 All Weather Track fixtures
- b) After the first 4 fixtures of the year (for which no attendance figures have been reported), racing at Great Leighs ceased.  
14 fixtures were transferred elsewhere and 53 other fixtures were re-allocated to other courses.  
2 fixtures were not re-allocated and were withdrawn from the fixture list
- c) 1 race transferred to Kempton Park

##### KEMPTON PARK

- a) 86 All Weather Track fixtures
- b) 6 additional fixtures
- c) 5 fixtures transferred from Great Leighs
- d) 14 fixtures re-allocated from Great Leighs
- e) 1 fixture was a replacement for a Turf Jump fixture, which was abandoned
- f) 1 race transferred from Great Leighs

##### LEICESTER

- a) 1 race abandoned

##### LINGFIELD PARK

- a) 72 All Weather Track fixtures
- b) 3 additional fixtures
- c) 2 fixtures transferred from Great Leighs
- d) 9 fixtures re-allocated from Great Leighs
- e) 1 fixture which was originally an AWT fixture converted to a Turf fixture

##### MUSSELBURGH

- a) 1 fixture re-allocated from Great Leighs (AWT)

##### NEWCASTLE

- a) 1 fixture re-allocated from Great Leighs (AWT)

##### SALISBURY

- a) 1 additional race programmed

##### SOUTHWELL

- a) 64 All Weather Track fixtures
- b) 2 fixtures transferred from Great Leighs
- c) 9 fixtures re-allocated from Great Leighs
- d) 3 fixtures which were originally Turf fixtures converted to All Weather Track fixtures

##### WARWICK

- a) 1 fixture re-allocated from Great Leighs (AWT)

##### WINDSOR

- a) 1 fixture re-allocated from Great Leighs (AWT)

##### WOLVERHAMPTON

- a) 98 All Weather Track fixtures
- b) 3 additional fixtures
- c) 5 fixtures transferred from Great Leighs
- d) 10 fixtures re-allocated from Great Leighs

# Racecourse Activities 2009 Jump

Racecourse	Fixtures	Abandoned	Races	Entries	Runners	Ave Runners	Attendance	Ave Attendance
AINTREE	9		59	1,614	741	12.6	181,378	20,153
ASCOT	6	2	41	907	386	9.4	65,081	10,847
AYR	10	3	70	1,570	551	7.9	31,671	3,167
BANGOR-ON-DEE	14	1	97	2,636	929	9.6	46,681	3,334
CARLISLE	10	3	65	1,392	614	9.4	26,041	2,604
CARTMEL	6		38	1,087	369	9.7	56,184	9,364
CATTERICK BRIDGE	6	4	42	1,051	556	13.2	9,291	1,549
CHELTENHAM	17		111	3,680	1,388	12.5	407,968	23,998
CHEPSTOW	14	1	96	2,946	1,083	11.3	39,042	2,789
DONCASTER	8		54	1,732	638	11.8	26,475	3,309
EXETER	14	2	88	2,384	876	10.0	22,794	1,628
FAKENHAM	10	1	62	1,366	510	8.2	26,860	2,686
FFOS LAS	6		42	1,000	405	9.6	36,626	6,104
FOLKESTONE	7	2	46	1,059	440	9.6	8,012	1,145
FONTWELL PARK	21	2	141	3,329	1,327	9.4	56,499	2,690
HAYDOCK PARK	7	2	50	1,374	442	8.8	39,333	5,619
HEREFORD	13	2	88	2,695	1,029	11.7	18,843	1,449
HEXHAM	13	2	82	2,042	863	10.5	25,792	1,984
HUNTINGDON	16	3	106	2,812	979	9.2	34,692	2,168
KELSO	13	2	91	2,084	884	9.7	35,020	2,694
KEMPTON PARK	12	1	83	2,035	778	9.4	42,934	3,578
LEICESTER	7	4	43	1,097	417	9.7	7,662	1,095
LINGFIELD PARK	5	2	35	866	340	9.7	6,684	1,337
LUDLOW	14	2	98	2,273	1,004	10.2	26,427	1,888
MARKET RASEN	19	3	128	3,197	1,178	9.2	57,548	3,029
MUSSELBURGH	7	4	46	1,101	491	10.7	11,575	1,654
NEWBURY	10	2	70	1,831	770	11.0	61,367	6,137
NEWCASTLE	8	3	56	1,570	621	11.1	20,814	2,602
NEWTON ABBOT	18		116	3,185	1,166	10.1	49,555	2,753
PERTH	12	1	81	2,123	793	9.8	51,358	4,280
PLUMPTON	13	3	90	2,272	781	8.7	31,721	2,440
SANDOWN PARK	8	1	54	1,242	488	9.0	44,381	5,548
SEDGEFIELD	15	4	94	2,295	983	10.5	19,688	1,313
SOUTHWELL	14	1	94	2,615	985	10.5	24,082	1,720
STRATFORD-ON-AVON	18		118	3,138	1,231	10.4	52,447	2,914
TAUNTON	13	1	88	2,442	840	9.5	20,422	1,571
TOWCESTER	16	1	102	3,022	1,069	10.5	65,750	4,109
UTTOXETER	23	2	155	4,962	1,653	10.7	108,624	4,723
WARWICK	8	2	57	1,782	616	10.8	13,572	1,697
WETHERBY	13	5	90	1,950	738	8.2	46,463	3,574
WINCANTON	16	1	101	2,592	963	9.5	48,153	3,010
WORCESTER	16		106	2,912	1,112	10.5	30,971	1,936
<b>TOTAL</b>	<b>505</b>	<b>75</b>	<b>3,374</b>	<b>89,262</b>	<b>34,027</b>	<b>10.1</b>	<b>2,036,481</b>	<b>4,033</b>



# Racecourse Activities

## 2009

### Jump

#### Notes

##### ASCOT

- a) Long Walk Hurdle transferred to Newbury because of snow

##### AYR

- a) 2 additional fixtures

##### BANGOR-ON-DEE

- a) 5 steeple chases abandoned and 4 additional hurdle races programmed

##### CARLISLE

- a) 11 hurdle races and 4 NHF races abandoned and 12 additional steeple chases programmed

##### CARTMEL

- a) 1 additional fixture (which was abandoned)

##### DONCASTER

- a) 1 race declared void

##### EXETER

- a) 3 steeple chases abandoned and 3 hurdle races allowed to divide
- b) 2 steeple chases abandoned and 2 additional hurdle races programmed

##### FAKENHAM

- a) 1 additional fixture

##### FONTWELL PARK

- a) 1 additional fixture

##### HEREFORD

- a) 2 additional fixtures

##### HEXHAM

- a) 1 additional fixture (which was abandoned)
- b) 1 additional steeple chase programmed

##### HUNTINGDON

- a) 1 additional fixture

##### KELSO

- a) 1 additional fixture

##### KEMPTON PARK

- a) 1 fixture abandoned and replaced by a Flat AWT fixture
- b) Aon Chase (run as Levy Board Chase) transferred from Newbury

##### LEICESTER

- a) 3 steeple chases abandoned (hard ground) and 3 additional hurdle races programmed

##### LINGFIELD PARK

- a) 3 hurdle races abandoned and 2 additional steeple chases and 1 NHF race programmed

##### MARKET RASEN

- a) 6 steeple chases abandoned and 5 additional hurdle races and 1 NHF race programmed
- b) 1 additional NHF race programmed

##### MUSSELBURGH

- a) 2 additional fixtures

##### NEWBURY

- a) Aon Chase transferred to Kempton
- b) Long Walk Hurdle transferred from Ascot

##### SANDOWN PARK

- a) Kingmaker Novices' Chase re-scheduled from Warwick

##### SEDFIELD

- a) 1 additional fixture (which was abandoned)

##### SOUTHWELL

- a) 4 fixtures transferred from Worcester
- b) 1 additional hurdle race programmed

##### WARWICK

- a) Kingmaker Novices' Chase re-scheduled at Sandown

##### WINCANTON

- a) 6 steeple chases abandoned and 2 additional hurdle races programmed and another 2 hurdle races divided

##### WORCESTER

- a) 4 fixtures transferred to Southwell
- b) 6 races abandoned

# Racecourse Activities 2009 All Racing

Racecourse	Fixtures	Abandoned	Races	Entries	Runners	Ave Runners	Attendance	Ave Attendance
AINTREE	9		59	1,614	741	12.6	181,378	20,153
ASCOT	23	2	147	4,372	1,685	11.5	537,174	23,355
AYR	26	3	184	4,338	1,752	9.5	90,438	3,478
BANGOR-ON-DEE	14	1	97	2,636	929	9.6	46,681	3,334
BATH	21		133	2,963	1,248	9.4	48,171	2,294
BEVERLEY	19		134	3,309	1,391	10.4	87,630	4,612
BRIGHTON	20		132	2,859	1,173	8.9	35,589	1,779
CARLISLE	18	3	119	2,778	1,178	9.9	58,956	3,275
CARTMEL	6		38	1,087	369	9.7	56,184	9,364
CATTERICK BRIDGE	24	4	164	3,838	1,763	10.8	40,513	1,688
CHELTENHAM	17		111	3,680	1,388	12.5	407,968	23,998
CHEPSTOW	28	1	183	5,233	2,056	11.2	69,738	2,491
CHESTER	13		80	1,729	700	8.8	249,382	19,183
DONCASTER	31		208	6,664	2,377	11.4	183,200	5,910
EPSOM DOWNS	14		88	2,291	759	8.6	113,050	8,075
EXETER	14	2	88	2,384	876	10.0	22,794	1,628
FAKENHAM	10	1	62	1,366	510	8.2	26,860	2,686
FFOS LAS	9		63	1,460	585	9.3	49,226	5,470
FOLKESTONE	22	2	142	3,288	1,231	8.7	31,810	1,446
FONTWELL PARK	21	2	141	3,329	1,327	9.4	56,499	2,690
GOODWOOD	23		158	4,030	1,666	10.5	213,239	9,271
GREAT LEIGHS	4		24	431	192	8.0	-	-
HAMILTON PARK	18	1	120	2,420	992	8.3	50,898	2,828
HAYDOCK PARK	30	2	192	5,466	1,726	9.0	178,503	5,950
HEREFORD	13	2	88	2,695	1,029	11.7	18,843	1,449
HEXHAM	13	2	82	2,042	863	10.5	25,792	1,984
HUNTINGDON	16	3	106	2,812	979	9.2	34,692	2,168
KELSO	13	2	91	2,084	884	9.7	35,020	2,694
KEMPTON PARK	98	1	680	14,588	6,765	9.9	114,108	1,164
LEICESTER	27	4	176	4,921	1,662	9.4	34,924	1,293
LINGFIELD PARK	98	2	686	14,152	6,409	9.3	126,855	1,294
LUDLOW	14	2	98	2,273	1,004	10.2	26,427	1,888
MARKET RASEN	19	3	128	3,197	1,178	9.2	57,548	3,029
MUSSELBURGH	24	4	162	3,193	1,513	9.3	55,187	2,299
NEWBURY	28	2	201	5,400	2,208	11.0	198,193	7,078
NEWCASTLE	27	3	186	5,137	1,962	10.5	103,218	3,823
NEWMARKET	38		268	7,963	2,777	10.4	338,949	8,920
NEWTON ABBOT	18		116	3,185	1,166	10.1	49,555	2,753
NOTTINGHAM	20		139	4,432	1,509	10.9	28,712	1,436
PERTH	12	1	81	2,123	793	9.8	51,358	4,280
PLUMPTON	13	3	90	2,272	781	8.7	31,721	2,440
PONTEFRACT	16		111	2,948	1,058	9.5	79,921	4,995
REDCAR	18	1	127	3,939	1,451	11.4	48,659	2,703
RIPON	15		97	2,310	983	10.1	72,453	4,830
SALISBURY	16		111	2,912	1,110	10.0	54,721	3,420
SANDOWN PARK	27	1	169	4,001	1,534	9.1	161,024	5,964
SEDGEFIELD	15	4	94	2,295	983	10.5	19,688	1,313
SOUTHWELL	78	1	536	10,460	5,059	9.4	83,796	1,074
STRATFORD-ON-AVON	18		118	3,138	1,231	10.4	52,447	2,914
TAUNTON	13	1	88	2,442	840	9.5	20,422	1,571
THIRSK	14		94	2,537	1,011	10.8	55,175	3,941
TOWCESTER	16	1	102	3,022	1,069	10.5	65,750	4,109
UTTOXETER	23	2	155	4,962	1,653	10.7	108,624	4,723
WARWICK	21	2	146	4,426	1,479	10.1	39,871	1,899
WETHERBY	13	5	90	1,950	738	8.2	46,463	3,574
WINCANTON	16	1	101	2,592	963	9.5	48,153	3,010
WINDSOR	27		170	4,463	1,778	10.5	108,947	4,035
WOLVERHAMPTON	98	3	689	14,662	6,809	9.9	70,845	723
WORCESTER	16		106	2,912	1,112	10.5	30,971	1,936
YARMOUTH	24		168	4,304	1,659	9.9	63,631	2,651
YORK	17		111	3,468	1,380	12.4	322,232	18,955
<b>TOTAL</b>	<b>1,426</b>	<b>80</b>	<b>9,628</b>	<b>239,777</b>	<b>95,996</b>	<b>10.0</b>	<b>5,720,776</b>	<b>4,023</b>

## Notes

Mixed attendances are included with the Flat figures.

4 Great Leighs fixtures for which no attendance figures were reported

# Racecourse Activities

## 2009

### All Racing

#### Notes

##### ASCOT

- a) Long Walk Hurdle transferred to Newbury because of snow

##### AYR

- a) 2 additional Jump fixtures
- b) 5 Flat races abandoned - unsafe ground

##### BANGOR-ON-DEE

- a) 5 steeple chases abandoned and 4 additional hurdle races programmed

##### BATH

- a) 3 fixtures re-allocated from Great Leighs (AWT)

##### BRIGHTON

- a) 1 fixture re-allocated from Great Leighs (AWT)

##### CARLISLE

- a) 11 hurdle races and 4 NHF races abandoned and 12 additional steeple chases programmed

##### CARTMEL

- a) 1 additional fixture (which was abandoned)

##### DONCASTER

- a) 1 Jump race declared void

##### EXETER

- a) 3 steeple chases abandoned and 3 hurdle races allowed to divide
- b) 2 steeple chases abandoned and 2 additional hurdle races programmed

##### FAKENHAM

- a) 1 additional fixture

##### FFOS LAS

- a) 1 Flat fixture re-allocated from Great Leighs (AWT)

##### FONTWELL PARK

- a) 1 additional fixture

##### GREAT LEIGHS

- a) 4 All Weather Track Flat fixtures
- b) After the first 4 fixtures of the year (for which no attendance figures have been reported), racing at Great Leighs ceased. 14 fixtures were transferred elsewhere and 53 other fixtures were re-allocated to other courses. 2 fixtures were not re-allocated and were withdrawn from the fixture list
- c) 1 race transferred to Kempton Park

##### HEREFORD

- a) 2 additional fixtures

##### HEXHAM

- a) 1 additional fixture (which was abandoned)
- b) 1 additional steeple chase programmed

##### HUNTINGDON

- a) 1 additional fixture

##### KELSO

- a) 1 additional fixture

##### KEMPTON PARK

- a) 86 All Weather Track Flat fixtures
- b) 6 additional Flat fixtures
- c) 5 Flat fixtures transferred from Great Leighs
- d) 14 Flat fixtures re-allocated from Great Leighs
- e) 1 Flat fixture was a replacement for a Turf Jump fixture, which was abandoned
- f) 1 Flat race transferred from Great Leighs
- g) 1 Jump fixture abandoned and replaced by a Flat AWT fixture
- h) Aon Chase (run as Levy Board Chase) transferred from Newbury

##### LEICESTER

- a) 1 Flat race abandoned
- b) 3 steeple chases abandoned (hard ground) and 3 additional hurdle races programmed

##### LINGFIELD PARK

- a) 72 All Weather Track Flat fixtures
- b) 3 additional Flat fixtures
- c) 2 Flat fixtures transferred from Great Leighs
- d) 9 Flat fixtures re-allocated from Great Leighs
- e) 1 Flat fixture which was originally an AWT fixture converted to a Turf fixture
- f) 3 hurdle races abandoned and 2 additional steeple chases and 1 NHF race programmed

##### MARKET RASEN

- a) 6 steeple chases abandoned and 5 additional hurdle races and 1 NHF race programmed
- b) 1 additional NHF race programmed

##### MUSSELBURGH

- a) 1 Flat fixture re-allocated from Great Leighs (AWT)
- b) 2 additional Jump fixtures

##### NEWBURY

- a) Aon Chase transferred to Kempton
- b) Long Walk Hurdle transferred from Ascot

##### NEWCASTLE

- a) 1 Flat fixture re-allocated from Great Leighs (AWT)

##### SALISBURY

- a) 1 additional race programmed

##### SANDOWN PARK

- a) Kingmaker Novices' Chase re-scheduled from Warwick

##### SEDFIELD

- a) 1 additional fixture (which was abandoned)

##### SOUTHWELL

- a) 64 All Weather Track Flat fixtures
- b) 2 Flat fixtures transferred from Great Leighs
- c) 9 Flat fixtures re-allocated from Great Leighs
- d) 3 Flat fixtures which were originally Turf fixtures converted to All Weather Track fixtures
- e) 4 Jump fixtures transferred from Worcester
- f) 1 additional hurdle race programmed

**Racecourse Activities  
2009  
All Racing**

**Notes (continued)**

**WARWICK**

- a) 1 Flat fixture re-allocated from Great Leighs (AWT)
- b) Kingmaker Novices' Chase re-scheduled at Sandown

**WINCANTON**

- a) 6 steeple chases abandoned and 2 additional hurdle races programmed and another 2 hurdle races divided

**WINDSOR**

- a) 1 fixture re-allocated from Great Leighs (AWT)

**WOLVERHAMPTON**

- a) 98 All Weather Track Flat fixtures
- b) 3 additional fixtures
- c) 5 fixtures transferred from Great Leighs
- d) 10 fixtures re-allocated from Great Leighs

**WORCESTER**

- a) 4 fixtures transferred to Southwell
- b) 6 races abandoned

**YARMOUTH**

- a) 2 fixtures re-allocated from Great Leighs

## Racecourse Activities

### Monthly Attendance Figures

	2005			2006			2007			2008			2009		
	Flat	Jump	Total	Flat	Jump	Total	Flat	Jump	Total	Flat	Jump	Total	Flat	Jump	Total
JAN	24,004	151,650	175,654	25,576	128,522	154,098	30,708	120,416	151,124	35,344	121,924	157,268	31,599	123,009	154,608
FEB	28,194	128,262	156,456	25,406	119,640	145,046	24,364	118,464	142,828	33,218	136,404	169,622	23,305	115,061	138,366
MAR	58,087	419,170	477,257	45,366	346,468	391,834	35,564	389,144	424,708	54,198	341,119	395,317	42,029	365,109	407,138
APR	207,002	330,723	537,725	175,395	330,139	505,534	171,154	338,733	509,887	155,151	317,817	472,968	167,386	329,362	496,748
MAY	452,623	185,487	638,110	427,962	184,242	612,204	448,223	180,665	628,888	517,287	179,763	697,050	495,093	183,405	678,498
JUN	786,121	88,569	874,690	792,093	88,632	880,725	798,890	81,218	880,108	841,041	107,690	948,731	786,909	92,193	879,102
JUL	860,126	78,826	938,952	786,976	92,503	879,479	656,179	72,225	728,404	774,801	83,769	858,570	818,725	80,523	899,248
AUG	626,662	104,910	731,572	749,445	102,252	851,697	736,578	80,947	817,525	617,851	84,313	702,164	680,241	95,133	775,374
SEP	373,446	57,293	430,739	391,026	63,144	454,170	440,621	66,162	506,783	336,992	48,610	385,602	362,384	57,354	419,738
OCT	206,907	167,614	374,521	167,680	177,970	345,650	223,019	139,598	362,617	183,362	138,204	321,566	201,433	158,065	359,498
NOV	41,478	240,620	282,098	41,050	274,246	315,296	59,765	261,555	321,320	54,180	264,446	318,626	35,845	257,510	293,355
DEC	39,917	239,822	279,739	52,863	284,950	337,813	46,062	300,315	346,377	51,724	237,448	289,172	39,346	179,757	219,103
<b>TOTAL</b>	<b>3,704,567</b>	<b>2,192,946</b>	<b>5,897,513</b>	<b>3,680,838</b>	<b>2,192,708</b>	<b>5,873,546</b>	<b>3,671,127</b>	<b>2,149,442</b>	<b>5,820,569</b>	<b>3,655,149</b>	<b>2,061,507</b>	<b>5,716,656</b>	<b>3,684,295</b>	<b>2,036,481</b>	<b>5,720,776</b>

#### Notes

Mixed attendances are included with the Flat figures.

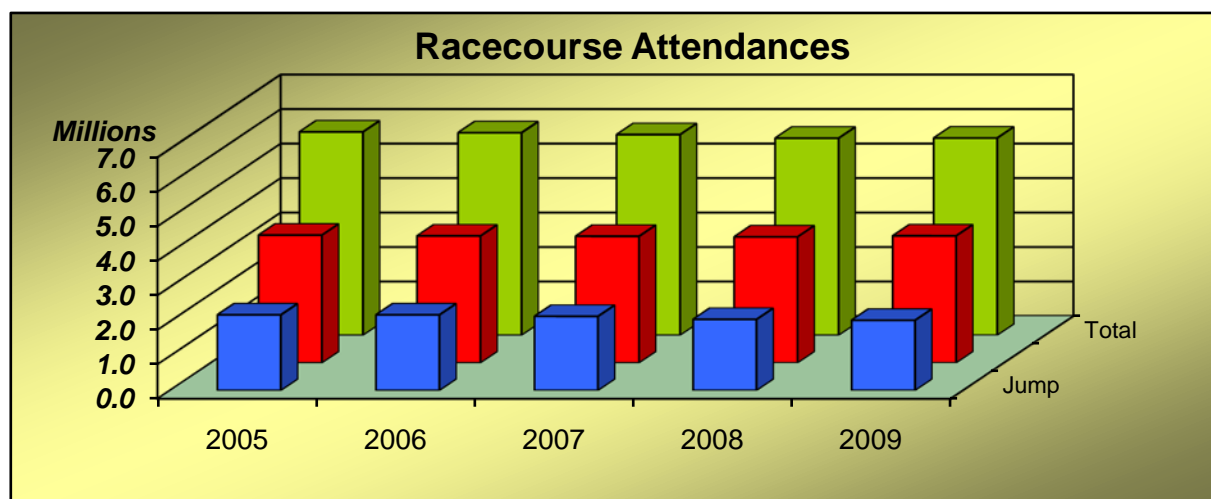
## Racecourse Activities

### Daily Spread of Public Attendances

	2005			2006			2007			2008			2009		
	Flat	Jump	Total	Flat	Jump	Total	Flat	Jump	Total	Flat	Jump	Total	Flat	Jump	Total
MON	258,652	62,080	320,732	236,006	70,586	306,592	224,089	81,453	305,542	213,377	84,054	297,431	193,477	72,995	266,472
TUE	273,282	166,286	439,568	279,515	174,759	454,274	253,092	149,933	403,025	223,605	153,416	377,021	227,120	154,256	381,376
WED	394,925	231,013	625,938	398,007	246,603	644,610	410,382	202,182	612,564	329,828	152,823	482,651	354,446	178,600	533,046
THU	433,515	265,269	698,784	434,783	263,150	697,933	450,450	263,215	713,665	452,677	263,798	716,475	430,195	248,173	678,368
FRI	658,007	327,306	985,313	707,430	352,772	1,060,202	711,109	346,662	1,057,771	778,197	376,597	1,154,794	720,044	362,985	1,083,029
SAT	1,281,328	631,612	1,912,940	1,267,874	608,839	1,876,713	1,260,675	632,195	1,892,870	1,337,189	613,730	1,950,919	1,377,363	616,605	1,993,968
SUN	288,003	334,668	622,671	271,944	332,934	604,878	283,121	313,711	596,832	267,788	273,991	541,779	289,419	311,264	600,683
B/HOL	116,855	174,712	291,567	85,279	143,065	228,344	78,209	160,091	238,300	52,488	143,098	195,586	92,231	91,603	183,834
<b>TOTAL</b>	<b>3,704,567</b>	<b>2,192,946</b>	<b>5,897,513</b>	<b>3,680,838</b>	<b>2,192,708</b>	<b>5,873,546</b>	<b>3,671,127</b>	<b>2,149,442</b>	<b>5,820,569</b>	<b>3,655,149</b>	<b>2,061,507</b>	<b>5,716,656</b>	<b>3,684,295</b>	<b>2,036,481</b>	<b>5,720,776</b>

#### Notes

Mixed attendances are included with the Flat figures.



# SECTION F

## HORSERACE BETTING AND LEVY

TABLE 1

### Levy Board Income and Expenditure (Financial Years)

#### The Levy and Levy Board Income

The total Horserace Betting Levy Board income in the last 5 financial years broken down into:

- a) From Bookmakers
- b) From Totalisator Board (tote)
- c) Other Income (Net Interest)
- d) Total Income

#### Allocation of Levy: Levy Board Expenditure

An analysis of the expenditure of the Horserace Betting Levy Board.

## Betting and Levy Board Statistics

### Levy Board Income and Expenditure - Financial Years <sup>(a)</sup>

	2004-2005 £ Thousand	2005-2006 £ Thousand	2006-2007 £ Thousand	2007-2008 £ Thousand	2008-2009 £ Thousand
<b>THE LEVY AND LEVY BOARD INCOME</b>					
Bookmakers	100,163	88,917	91,642	107,300	82,867
Totalisator Board (tote)	8,309	8,196	8,732	9,200	8,779
Other Levy Board Income <sup>(b)</sup>	1,636	1,735	1,292	1,446	1,832
Other Contributions					1,352
<b>TOTAL INCOME</b>	<b>110,108</b>	<b>98,848</b>	<b>101,666</b>	<b>117,946</b>	<b>94,830</b>
<b>ALLOCATION OF LEVY: LEVY BOARD EXPENDITURE</b>					
Prize Money	59,449	64,019	65,394	56,647	59,418
Integrity Services	16,767	18,214	24,013	35,529	24,978
Racecourses	10,227	9,614	8,825	7,877	6,958
Training	798	874	902	964	973
Other Improvement of Horseracing	748	-161	-450	2,740	1,220
Assistance To Breeding	3,370	3,952	1,682	1,845	1,917
Veterinary Science and Education	1,393	3,178	2,214	2,364	2,633
Levy Board Administration	3,296	3,606	3,372	3,631	3,614
Bookmakers' Committee	180	211	200	253	264
<b>TOTAL EXPENDITURE</b>	<b>96,228</b>	<b>103,507</b>	<b>106,152</b>	<b>111,850</b>	<b>101,975</b>

Source: Levy Board Annual Reports

**Notes**

(a) Financial year April 1st to March 31st Levy Period

(b) Net Interest



# SECTION G

## POINT TO POINT RACING

**TABLE 1**

**Fixture Statistics**

An analysis of the number of Courses, Meetings, Abandonments, Postponements and Re-Arrangements each season for the last 5 seasons.

**TABLE 2**

**Point to Point Horse and Race Statistics**

**Point to Point by Race Type**

An analysis of the Number of Races, Number of Runners and Average Number of Runners per Race for each type of Race.

**All Races**

Totals for the season of:

- a) Number of Registered Hunters' Certificates
- b) Number of Races Run
- c) Number of Entries
- d) Number of Runners
- e) Average Number of Runners per Race

## Point to Point Racing

### Number of Courses, Meetings and Abandonments

	2005	2006	2006/7	2007/8	2008/9
No. of Scheduled Meetings	210	211	213	213	212
No. of Actual Meetings	202	198	200	209	205
No. of Meetings Abandoned	8	11	13	4	7
No. of Meetings Postponed	5	11	5	11	11
No. of Meetings Re-Arranged	5	3	2	1	5
No. of Mid-Week Fixtures (exc. Bank Holidays)	3	3	4	4	4
Duration of Season in Weeks	23	24	28	28	28
Total No. of Courses	117	119	117	117	117
No. of Courses with 1 Fixture	57	60	62	59	57
No. of Courses with 2 Fixtures	38	37	39	40	36
No. of Courses with 3 Fixtures	16	15	11	14	17
No. of Courses with 4 Fixtures	4	5	7	5	5
No. of Courses with 5 or more Fixtures	2	2	2	2	2

**Notes**

Figures for 2006 do not include fixtures held in December 2006. These fixtures are included in statistics for the 2006/7 season.

## Point to Point Racing

### Number of Races and Runners by Type of Race

2008/9

Type of Race	No. of Races	No. of Runners	Average No. of Runners Per Race
Club Members	154	1,140	7.4
Confined	90	715	7.9
Hunt Members	141	593	4.2
Intermediate	84	552	6.6
Ladies Open	157	959	6.1
Mens Open	156	1,029	6.6
Mixed Open	47	330	7.0
Club Members Maiden	15	152	10.1
Confined Maiden	19	185	9.7
Open Maiden	295	3,007	10.2
2m4f/2m5f Maiden	93	844	9.1
Restricted	199	1,851	9.3

No. of Registered Hunters' Certificates:	3,754
Total No. of Races:	1,450
Total No. of Entries* :	28,661
Total No. of Runners:	11,537
Average No. of Runners per Race:	8.0

\* Including Entries for Abandoned Meetings

# SECTION H

## STABLE EMPLOYEES

**TABLE 1**

1. Total Number of Persons on File
2. Number in Full Time Current Employment with Licensed Trainers
3. Number in Full Time Current Employment with Permitted Trainers
4. Total Number in Full Time Current Employment
5. Number in Part Time Current Employment with Licensed Trainers
6. Number in Part Time Current Employment with Permitted Trainers
7. Total Number in Part Time Current Employment

MALE AND FEMALE ARE SHOWN SEPARATELY

These figures exclude those people who are registered as Self-Employed.

**TABLE 2**

### **Totals by Job Category**

The number of Stable Employees broken down by type of job.

MALE AND FEMALE ARE SHOWN SEPARATELY

**TABLE 3**

### **Totals by Age Group**

The number of Stable Employees broken down by age group.

## Stable Employees

### Number of People Employed Full and Part Time With Licensed and Permitted Trainers

	2005		2006		2007		2008		2009	
	Male	Female	Male	Female	Male	Female	Male	Female	Male	Female
Total on File	3,448	3,011	3,563	3,089	3,667	3,103	4,027	3,133	4,066	2,978
Employed Full Time - with Licensed Trainers	2,458	1,668	2,518	1,691	2,619	1,729	3,081	1,777	3,089	1,661
Employed Full Time - with Permitted Trainers	26	52	29	56	30	45	27	31	25	39
<b>Employed Full Time - TOTAL</b>	<b>2,484</b>	<b>1,720</b>	<b>2,547</b>	<b>1,747</b>	<b>2,649</b>	<b>1,774</b>	<b>3,108</b>	<b>1,808</b>	<b>3,114</b>	<b>1,700</b>
Employed Part Time - with Licensed Trainers	865	1,154	901	1,189	923	1,192	856	1,223	883	1,155
Employed Part Time - with Permitted Trainers	99	137	115	153	95	137	63	102	69	123
<b>Employed Part Time - TOTAL</b>	<b>964</b>	<b>1,291</b>	<b>1,016</b>	<b>1,342</b>	<b>1,018</b>	<b>1,329</b>	<b>919</b>	<b>1,325</b>	<b>952</b>	<b>1,278</b>

**Notes**

The above figures exclude those people registered as Self-Employed.

## Stable Employees

### Distribution by Category of Job

	2005		2006		2007		2008		2009	
	Male	Female	Male	Female	Male	Female	Male	Female	Male	Female
Assistant Trainer	308	263	288	274	286	259	276	248	277	249
Head Lad	214	90	197	94	195	106	217	101	216	103
Travelling Head Lad	176	63	169	74	171	91	164	94	167	87
Stable Lad/Lass	1,577	1,642	1,625	1,683	1,714	1,616	1,965	1,594	1,976	1,497
Trainee Stable Lad/Lass	52	85	77	96	66	97	61	88	45	81
Apprentice/Conditional Jockey	163	22	208	31	160	21	159	27	141	27
Box Driver	166	24	168	24	174	23	158	32	156	25
Secretary	31	299	30	311	30	304	29	319	31	295
Pupil Under Training	98	93	98	83	85	91	82	94	68	84
Work Rider	339	360	391	385	426	437	532	441	617	459
Gallopman	71	1	71	0	72	2	71	1	64	4
Yardman	330	85	347	101	363	100	343	108	316	94
Feedman	9	3	9	6	7	3	6	4	6	5
Hackman	5	10	5	14	7	11	9	12	10	11
Blacksmith	36	1	36	1	36	1	39	1	39	1
Hostel Employee	2	23	2	20	2	20	2	5	16	15
Other Duties	249	236	276	235	288	260	354	312	362	308
<b>TOTAL</b>	<b>3,826</b>	<b>3,300</b>	<b>3,997</b>	<b>3,432</b>	<b>4,082</b>	<b>3,442</b>	<b>4,467</b>	<b>3,481</b>	<b>4,507</b>	<b>3,345</b>

## Stable Employees

### Distribution by Age Group

	2005	2006	2007	2008	2009
16 and under	150	149	157	133	122
17	177	205	200	212	176
18	198	216	253	251	244
19	260	216	233	246	238
20-24	1,272	1,382	1,327	1,320	1,245
25-29	1,052	1,121	1,118	1,242	1,236
30-34	756	759	816	917	947
35-39	756	775	768	854	822
40-44	687	701	698	764	788
45-49	538	565	605	624	625
50-54	402	447	432	485	491
55-59	330	331	319	326	335
60-64	266	271	273	241	249
65 and over	282	291	325	333	334
<b>TOTAL</b>	<b>7,126</b>	<b>7,429</b>	<b>7,524</b>	<b>7,948</b>	<b>7,852</b>