

BRITISH RACING STATISTICS 2010

INTRODUCTION

The specification details of all tables included in British Racing Statistics 2010 are provided at the front of each section.

These statistics are only responsible for providing basic information. Any comparisons of figures and expressions of percentages, trends, etc. must be the responsibility of the user of these tables.



B.H.A. Editorial Department,
Weatherbys Ltd,
Sanders Road,
Wellingborough,
Northants,
NN8 4BX

Tel: 01933 440077
Fax: 01933 304787
Email: editorial@weatherbys.co.uk

BRITISH RACING STATISTICS 2010

TABLE OF CONTENTS

LEADING PERFORMERS	
SECTION A	BREEDING
SECTION B	OWNERSHIP
SECTION C	TRAINING AND RIDING
SECTION D	FIXTURES, RACES AND PRIZE MONEY
SECTION E	RACECOURSES
SECTION F	HORSERACE BETTING AND LEVY
SECTION G	POINT TO POINT RACING
SECTION H	STABLE EMPLOYEES
RACECOURSES MAP & DIRECTORY	

The specification details of all tables are included at the beginning of each section.

LEADING PERFORMERS

BHB Jump Order of Merit – Chase Leaderboard
 BHB Jump Order of Merit – Hurdle Leaderboard
 BHB Jump Order of Merit – Overall Leaderboard
 Group 1 Flat Race Winners
 Major Jump Race Winners
 Leading Horses – Flat
 Leading Horses – Jump
 Leading Jockeys – Flat
 Leading Jockeys – Jump
 Leading Trainers – Flat
 Leading Trainers – Jump

SECTION A – BREEDING

Table

Exported Horses	A1
Exported Horses - Destination	A2
Foals	A1
Mares	A1
Names Registered	A1
Stallions	A1

SECTION B – OWNERSHIP

Table

Business Partnerships Registered	B1
Colours Registered	B1
Companies Registered	B1
Joint Ownership Names Registered	B1
Joint Ownerships Registered	B1
Leases Registered	B1
Owners Registered	B1
Ownership Statistics – Number of Owners by the Number of Horses They Own	B2
Ownership Statistics – Number of Owners with a Horse in Training by Type of Ownership	B3
Racing Partnerships Registered	B1

SECTION C – TRAINING AND RIDING

Table

Horses in Training – All Horses	C2
Horses in Training – Dual-Purpose Horses	C2
Horses in Training – Flat-Only Horses	C2
Horses in Training – Hunter Chasers	C2
Horses in Training – Jump-Only Horses	C2
Horses in Training – Type of Ownership	C3
Permit Holders	C1
Riders – Amateur	C1
Riders – Professional by Type of Licence Held	C1
Trainers – Size of Yards – All Trainers	C4
Trainers – Size of Yards – Licensed Trainers	C4
Trainers – Size of Yards – Permit Holders & Hunter Trainers	C4
Trainers – Type of Licence Held	C1

SECTION D – FIXTURES, RACES AND PRIZE MONEY

Table

Abandoned Fixtures	D1
Appearance Money Payments	D16
Balloting Out and Eliminations	D5
Divided Races	D5
Eliminations – Flat – by Race Type	D6
Eliminations – Hurdle Races & NHF Races – by Distance	D8
Eliminations – Jump – by Race Type	D7
Eliminations – Steeple Chases – by Distance	D9
Entries – Flat – by Race Type	D6
Entries – Hurdle Races & NHF Races – by Distance	D8
Entries – Jump – by Race Type	D7
Entries – Steeple Chases – by Distance	D9
Evening Fixtures	D1
Field Sizes – Flat	D2, D4
Field Sizes – Hurdle Races & NHF Races	D3, D4
Field Sizes – Jump	D4
Field Sizes – Steeple Chases	D3, D4
Fixtures	D1
Owners' Premium Payments	D16
Prize Money – Flat – by Race Type	D6
Prize Money – Flat – by Racecourse	D13
Prize Money – Flat – by Source	D12
Prize Money – Flat – by Source for Flat Pattern Races	D10
Prize Money – Hurdle Races & NHF Races – by Distance	D8
Prize Money – Jump – by Race Type	D7
Prize Money – Jump – by Racecourse	D13
Prize Money – Jump – by Source	D12
Prize Money – Steeple Chases – by Distance	D9
Prize Money – Total – by Racecourse	D13
Prize Money – Total – by Source	D11, D12
Prize Money – Won Abroad by British-Trained Horses	D15
Prize Money – Won in Great Britain by Overseas-Trained Horses	D15
Races – Flat – by Race Type	D6
Races – Hurdle Races & NHF Races – by Distance	D8
Races – Jump – by Race Type	D7
Races – Steeple Chases – by Distance	D9
Runners – Different Horses That Ran	D5
Runners – Flat – by Race Type	D6
Runners – Hurdle Races & NHF Races – by Distance	D8
Runners – Jump – by Race Type	D7
Runners – Steeple Chases – by Distance	D9
Sponsored Number Cloth Income	D14
Walkovers – Flat	D2, D4
Walkovers – Hurdle Races & NHF Races	D3, D4
Walkovers – Jump	D4
Walkovers – Steeple Chases	D3, D4
Winners – Individual Different Horses	D5

SECTION E – RACECOURSES

Table

Abandoned Fixtures – by Course - All	E1
Abandoned Fixtures – by Course - Flat	E1
Abandoned Fixtures – by Course - Jump	E1
Attendances – by Course - All	E1
Attendances – by Course - Flat	E1
Attendances – by Course - Jump	E1
Attendances – by Day of the Week	E3
Attendances – by Month	E2
Attendances – Total	E2, E3
Entries – by Course - All	E1
Entries – by Course - Flat	E1
Entries – by Course - Jump	E1
Fixtures Held – by Course - All	E1
Fixtures Held – by Course - Flat	E1
Fixtures Held – by Course - Jump	E1
Races Run – by Course - All	E1
Races Run – by Course - Flat	E1
Races Run – by Course - Jump	E1
Runners – by Course - All	E1
Runners – by Course - Flat	E1
Runners – by Course - Jump	E1

SECTION F – HORSERACE BETTING AND LEVY

Table

Levy Board – Income	F1
Levy Board – Expenditure	F1

SECTION G – POINT TO POINT RACING

Table

Abandonments	G1
Courses	G1
Entries – Total	G2
Fixtures	G1
Hunters' Certificates	G2
Postponements	G1
Races – by Race Type	G2
Races – Total	G2
Re-Arrangements	G1
Runners – by Race Type	G2
Runners – Total	G2

SECTION H – STABLE EMPLOYEES

Table

Age Groups	H3
Employed Full Time	H1
Employed Part Time	H1
Employed with Licensed Trainers	H1
Employed with Permitted Trainers	H1
Job Category	H2
Total	H1

RACECOURSES MAP & DIRECTORY

Map of British Racecourses
Directory of British Racecourses

LEADING PERFORMERS

BHA Jump Order of Merit

The Overall leaderboard in the British Horseracing Authority's Jump Order of Merit for the 2009-2010 Jump season.

Winners of UK Group 1 Flat Races

A full list of all the winning horses in UK Group 1 Flat races run during the 2010 Flat Racing season.

Winners of Major UK Jump Races

A full list of all the winning horses in major UK Jump races scheduled to be run during the calendar year of 2010.

Leading Horses by Prize Money Won in Great Britain

The Top 10 Horses during the calendar year, Flat and Jump, in order of Total Prize Money won (Win and Place) in races taking place in Great Britain. The name of the Owner and Trainer of the horse is also shown, along with the single performance that earned the greatest amount of Prize Money.

Leading Trainers by Prize Money Won in Great Britain

The Top 10 Trainers during the calendar year, Flat and Jump, in order of Total Prize Money won (Win and Place) in races taking place in Great Britain. The number of Starters, number of Winners, number of Placed Horses and Strike Rate (percentage of Winners to Runners) is also shown. Total Prize Money is the sum of the Penalty Values of the Races concerned (not the Trainer's percentage). Places are defined as performances for which Prize Money was earned, other than for Winning a Race.

Leading Jockeys by Prize Money Won in Great Britain

The Top 10 Jockeys during the calendar year, Flat and Jump, in order of Total Prize Money won (Win and Place) in races taking place in Great Britain. The number of Rides, number of Winners, number of Placed Horses and Strike Rate (percentage of Winners to Runners) is also shown. Total Prize Money is the sum of the Penalty Values of the Races concerned (not the Jockey's percentage). Places are defined as performances for which Prize Money was earned, other than for Winning a Race.

BHA Jump Order of Merit - Overall Leaderboard 2009-2010

Place	Horse	Trainer	Points
1	Albertas Run	Jonjo O'Neill	81
2	Big Buck's	Paul Nicholls	75
3	Khyber Kim	Nigel Twiston-Davies	61
4	Twist Magic	Paul Nicholls	60
5	Zaynar	Nicky Henderson	54
6	Souffleur	Peter Bowen	51
7	Forpadydeplasterer	Thomas Cooper, Ireland	48
8	Monet's Garden	Nicky Richards	47
9	Tidal Bay	Howard Johnson	45
10	Madison Du Berlais	David Pipe	41

Winners of UK Group 1 Flat Races in 2010

Race	Distance	2010 Date	Racecourse	Value	1st Prize	Winner
StanJames.com 2000 Guineas Stakes	1m	01 May 2010	Newmarket	£400,000	£227,080	Makfi
StanJames.com 1000 Guineas Stakes	1m	02 May 2010	Newmarket	£400,000	£227,080	Special Duty
totesport.com Lockinge Stakes	1m	15 May 2010	Newbury	£200,000	£113,540	Paco Boy (IRE)
Investec Oaks	1m 4f 10y	04 June 2010	Epsom Downs	£366,600	£208,119	Snow Fairy (IRE)
Investec Coronation Cup	1m 4f 10y	04 June 2010	Epsom Downs	£225,000	£127,733	Fame And Glory
Investec Derby	1m 4f 10y	05 June 2010	Epsom Downs	£1,359,000	£771,504	Workforce
King's Stand Stakes (British Leg of the Global Sprint Challenge)	5f	15 June 2010	Royal Ascot	£300,000	£170,310	Equiano (FR)
Queen Anne Stakes	1m	15 June 2010	Royal Ascot	£250,000	£141,925	Goldikova (IRE)
St James's Palace Stakes	1m	15 June 2010	Royal Ascot	£250,000	£141,925	Canford Cliffs (IRE)
Prince of Wales's Stakes	1m 2f	16 June 2010	Royal Ascot	£450,000	£255,465	Byword
Gold Cup	2m 4f	17 June 2010	Royal Ascot	£250,000	£141,925	Rite of Passage
Coronation Stakes	1m	18 June 2010	Royal Ascot	£272,500	£154,698	Lillie Langtry (IRE)
Golden Jubilee Stakes (British Leg of the Global Sprint Challenge)	6f	19 June 2010	Royal Ascot	£450,000	£255,465	Starspangledbanner (AUS)
Coral-Eclipse	1m 2f 7y	03 July 2010	Sandown Park	£500,000	£283,850	Twice Over
Etihad Airways Falmouth Stakes	1m	07 July 2010	Newmarket	£185,000	£105,025	Music Show (IRE)
Darley July Cup (British Leg of the Global Sprint Challenge)	6f	09 July 2010	Newmarket	£400,000	£227,080	Starspangledbanner (AUS)
King George VI and Queen Elizabeth Stakes (Sponsored by Betfair)	1m 4f	24 July 2010	Ascot	£1,000,000	£567,700	Harbinger
Sussex Stakes	1m	28 July 2010	Goodwood	£316,500	£179,677	Canford Cliffs (IRE)
Blue Square Nassau Stakes	1m 1f 192y	31 July 2010	Goodwood	£215,200	£122,169	Midday
Juddmonte International Stakes	1m 2f 88y	17 August 2010	York	£693,500	£393,700	Rip Van Winkle (IRE)
Darley Yorkshire Oaks	1m 4f	19 August 2010	York	£310,000	£175,987	Midday
Coolmore Nunthorpe Stakes	5f	20 August 2010	York	£240,000	£136,248	Sole Power
Betfred Sprint Cup	6f	04 September 2010	Haydock Park	£288,550	£163,810	Markab
Ladbrokes St Leger Stakes	1m 6f 132y	11 September 2010	Doncaster	£500,000	£283,850	Arctic Cosmos (USA)
Queen Elizabeth II Stakes (Sponsored by Sony)	1m	25 September 2010	Ascot	£267,500	£151,860	Poet's Voice
Meon Valley Stud Fillies' Mile	1m	25 September 2010	Ascot	£218,000	£123,759	White Moonstone (USA)
Shadwell Middle Park Stakes	6f	01 October 2010	Newmarket	£186,800	£106,046	Dream Ahead (USA)
Adnams Cheveley Park Stakes	6f	01 October 2010	Newmarket	£173,400	£98,439	Hooray
Kingdom of Bahrain Sun Chariot Stakes	1m	02 October 2010	Newmarket	£180,000	£102,186	Sahpresa (USA)
Emirates Airline Champion Stakes	1m 2f	16 October 2010	Newmarket	£376,500	£213,739	Twice Over
Dubai Dewhurst Stakes	7f	16 October 2010	Newmarket	£317,200	£180,074	Frankel
Racing Post Trophy	1m	23 October 2010	Doncaster	£248,000	£140,790	Casamento (IRE)

Winners of Major UK Jump Races in 2010

Race	Distance	2010 Date	Racecourse	Value	1st Prize	Winner
2009-2010 SEASON						
Blue Square Tolworth Hurdle Race	2m 110y	02 January 2010	Sandown Park	£40,000	£22,804	Abandoned
totesport.com Classic Steeple Chase (A Handicap)	3m 5f	16 January 2010	Warwick	£70,000	£39,907	Abandoned
Victor Chandler Steeple Chase (Registered as The Clarence House Chase)	2m 1f	23 January 2010	Ascot	£105,000	£59,147	Twist Magic (FR)
toteplus Challengers Novices' Steeple Chase (Registered as The Scilly Isles Novices' Steeple Chase)	2m 4f 110y	06 February 2010	Sandown Park	£47,500	£27,080	Punchestowns (FR)
totesport Trophy Hurdle Race (Handicap)	2m 110y	13 February 2010	Newbury	£150,000	£85,515	Get Me Out Of Here (IRE)
Betfair Ascot Steeple Chase	2m 5f 110y	20 February 2010	Ascot	£150,000	£84,894	Monet's Garden (IRE)
Blue Square Gold Cup Steeple Chase (Handicap)	3m 4f	20 February 2010	Haydock Park	£100,000	£57,010	Silver By Nature
williamhill.com Dovecote Novices' Hurdle Race	2m	27 February 2010	Kempton Park	£27,000	£15,465	Escort'men (FR)
Smurfit Kappa Champion Hurdle Challenge Trophy	2m 110y	16 March 2010	Cheltenham	£370,000	£210,937	Binocular (FR)
Irish Independent Arkle Challenge Trophy Steeple Chase	2m	16 March 2010	Cheltenham	£150,000	£85,515	Sizing Europe (IRE)
Spinal Research Supreme Novices' Hurdle Race	2m 110y	16 March 2010	Cheltenham	£100,000	£57,010	Menorah (IRE)
Seasons Holidays Queen Mother Champion Steeple Chase	2m	17 March 2010	Cheltenham	£320,000	£182,432	Big Zeb (IRE)
RSA Steeple Chase	3m 110y	17 March 2010	Cheltenham	£150,000	£85,515	Weapon's Amnesty (IRE)
Neptune Investment Management Novices' Hurdle Race (Registered As The Baring Bingham Novices' Hurdle Race)	2m 5f	17 March 2010	Cheltenham	£100,000	£57,010	Peddlers Cross (IRE)
Weatherbys Champion Bumper (A Standard Open National Hunt Flat Race)	2m 110y	17 March 2010	Cheltenham	£60,000	£34,206	Cue Card
Ryanair Steeple Chase (Registered As The Festival Trophy Steeple Chase)	2m 5f	18 March 2010	Cheltenham	£250,000	£142,525	Albertas Run (IRE)
Ladbrokes World Hurdle Race	3m	18 March 2010	Cheltenham	£260,000	£148,226	Big Buck's (FR)
totesport Cheltenham Gold Cup Steeple Chase	3m 2f 110y	19 March 2010	Cheltenham	£475,000	£270,798	Imperial Commander (IRE)
JCB Triumph Hurdle Race	2m 1f	19 March 2010	Cheltenham	£100,000	£57,010	Soldatino (FR)
Albert Bartlett Novices' Hurdle Race (Registered as The Spa Novices' Hurdle Race)	3m	19 March 2010	Cheltenham	£100,000	£57,010	Berties Dream (IRE)
totesport Bowl Steeple Chase	3m 1f	08 April 2010	Aintree	£150,000	£86,520	What A Friend
Matalan Anniversary 4-y-o Novices' Hurdle Race	2m 110y	08 April 2010	Aintree	£100,000	£57,010	Orsippus (USA)
BGC Partners Liverpool Hurdle Race	3m 110y	08 April 2010	Aintree	£100,000	£57,010	Big Buck's (FR)
John Smith's Melling Steeple Chase	2m 4f	09 April 2010	Aintree	£175,000	£99,768	Albertas Run (IRE)
John Smith's Sefton Novices' Hurdle Race	3m 110y	09 April 2010	Aintree	£100,000	£57,010	Wayward Prince
John Smith's Grand National Steeple Chase (Handicap)	4m 4f	10 April 2010	Aintree	£925,000	£521,053	Don't Push It (IRE)
John Smith's Dick Francis Aintree Hurdle	2m 4f	10 April 2010	Aintree	£160,000	£91,216	Khyber Kim
John Smith's Maghull Novices' Steeple Chase	2m	10 April 2010	Aintree	£110,000	£62,711	Tataniano (FR)
Coral Scottish Grand National Handicap Steeple Chase	4m 110y	17 April 2010	Ayr	£200,000	£114,020	Merigo (FR)
bet365 Gold Cup Steeple Chase (Handicap)	3m 5f 110y	24 April 2010	Sandown Park	£160,000	£91,216	Church Island (IRE)
2010-2011 SEASON						
Paddy Power Gold Cup Steeple Chase (A Handicap)	2m 4f 110y	13 November 2010	Cheltenham	£150,000	£85,515	Little Josh (IRE)
Betfair Steeple Chase (Registered as The Lancashire Chase)	3m	20 November 2010	Haydock Park	£200,000	£112,660	Imperial Commander (IRE)
Hennessy Gold Cup Steeple Chase (Handicap)	3m 2f 110y	27 November 2010	Newbury	£175,000	£99,768	Diamond Harry
StanJames.com Fighting Fifth Hurdle Race	2m 110y	27 November 2010	Newbury (Newcastle abandoned)	£90,000	£51,309	Peddlers Cross (IRE)
Keith Prowse Hospitality Tingle Creek Steeple Chase	2m 110y	11 December 2010	Cheltenham (Sandown Park abandoned)	£60,000	£34,206	Master Minded (FR)
Vote A.P. Gold Cup (A Handicap Steeple Chase)	2m 5f	11 December 2010	Cheltenham	£150,000	£85,515	Poquelin (FR)
williamhill.com Feltham Novices' Steeple Chase	3m	26 December 2010	Kempton Park	£55,000	£31,356	Abandoned
A.P. Wins Sports Personality Long Walk Hurdle Race	3m 110y	29 December 2010	Newbury (Ascot abandoned)	£40,000	£22,638	Big Buck's (FR)
sportingbet Supports Heros Charity Challow Novices' Hurdle Race	2m 5f	29 December 2010	Newbury	£35,000	£19,954	Backspin (IRE)
Coral Welsh National (A Handicap Steeple Chase)	3m 5f 110y	08 January 2011	Chepstow	£80,000	£45,608	Synchronised (IRE)
		<i>(re-scheduled from 27/12/10)</i>				
Coral Future Champions Finale Juvenile Hurdle Race	2m 110y	08 January 2011	Chepstow	£35,000	£19,954	Marsh Warbler
		<i>(re-scheduled from 27/12/10)</i>				
William Hill King George VI Steeple Chase	3m	15 January 2011	Kempton Park	£180,000	£102,618	Long Run (FR)
		<i>(re-scheduled from 26/12/10)</i>				
williamhill.com Christmas Hurdle Race	2m	15 January 2011	Kempton Park	£75,000	£42,758	Binocular (FR)
		<i>(re-scheduled from 26/12/10)</i>				

Major Winners - Jump

Leading Horses Prize Money won in Great Britain

Flat - 2010

Horse	Owner	Trainer	Best Performance	Total Prize Money
1. Workforce (GB)	Mr K. Abdulla	Sir Michael Stoute	Investec Derby (1st) - Epsom Downs, June 5th	£830,684
2. Twice Over (GB)	Mr K. Abdulla	Sir Henry Cecil	Coral-Eclipse Stakes (1st) - Sandown Park, July 3rd	£743,670
3. Harbinger (GB)	Highclere Thoroughbred Racing (Adm.Rous)	Sir Michael Stoute	King George VI and Queen Elizabeth Stakes (Sponsored by Betfair) (1st) - Ascot, July 24th	£718,141
4. Starspangledbanner (AUS)	M.Tabor/D.Smith/Mrs Magnier/Ms Massey	Aidan O'Brien, Ireland	Darley July Cup (British Leg of the Global Sprint Challenge) (1st) - Newmarket, July 9th	£544,645
5. Rip Van Winkle (IRE)	Mrs John Magnier, Mr M.Tabor & Mr D.Smith	Aidan O'Brien, Ireland	Juddmonte International Stakes (1st) - York, Aug 17th	£522,752
6. Canford Cliffs (IRE)	Heffer Syndicate, Mrs Roy & Mrs Instance	Richard Hannon	Sussex Stakes (1st) - Goodwood, July 28th	£378,670
7. Wootton Bassett (GB)	Frank Brady & The Cosmic Cases	Richard Fahey	Weatherbys Insurance £300,000 2-y-o Stakes (1st) - Doncaster, Sept 9th	£347,463
8. Equiano (FR)	Mr J. Acheson	B. W. Hills	King's Stand Stakes (British Leg of the Global Sprint Challenge) (1st) - Royal Ascot, June 15th	£337,519
9. Arctic Cosmos (USA)	Rachel Hood and Robin Geffen	John Gosden	Ladbroke's St Leger Stakes (1st) - Doncaster, Sept 11th	£333,280
10. Byword (GB)	Mr K. Abdulla	A. Fabre, France	Prince Of Wales's Stakes (1st) - Royal Ascot, June 16th	£330,155

Leading Horses Prize Money won in Great Britain

Jump - 2010

Horse	Owner	Trainer	Best Performance	Total Prize Money
1. Don't Push It (IRE)	Mr John P. McManus	Jonjo O'Neill	John Smith's Grand National Steeple Chase (Handicap) (1st) - Aintree, Apr 10th	£521,053
2. Imperial Commander (IRE)	Our Friends in the North	Nigel Twiston-Davies	totesport Cheltenham Gold Cup Steeple Chase (1st) - Cheltenham, Mar 19th	£383,458
3. Albertas Run (IRE)	Mr Trevor Hemmings	Jonjo O'Neill	Ryanair Steeple Chase (Registered as The Festival Trophy Steeple Chase) (1st) - Cheltenham, Mar 18th	£277,886
4. Big Buck's (FR)	The Stewart Family	Paul Nicholls	Ladbroke's World Hurdle Race (1st) - Cheltenham, Mar 18th	£256,379
5. Binocular (FR)	Mr John P. McManus	Nicky Henderson	Smurfit Kappa Champion Hurdle Challenge Trophy (1st) - Cheltenham, Mar 16th	£234,829
6. Menorah (IRE)	Mrs Diana L. Whateley	Philip Hobbs	StanJames.com International Hurdle Race (1st) - Cheltenham, Dec 11th	£213,849
7. Black Apalachi (IRE)	Gerard Burke	D. T. Hughes, Ireland	John Smith's Grand National Steeple Chase (Handicap) (2nd) - Aintree, Apr 10th	£196,285
8. Big Zeb (IRE)	Mr Patrick Joseph Redmond	Colm A. Murphy, Ireland	Seasons Holidays Queen Mother Champion Steeple Chase (1st) - Cheltenham, Mar 17th	£182,432
9. Khyber Kim (GB)	Mrs Caroline Mould	Nigel Twiston-Davies	John Smith's Dick Francis Aintree Hurdle (1st) - Aintree, Apr 10th	£170,359
10. Peddlers Cross (IRE)	Mr T. G. Leslie	Donald McCain	Neptune Investment Management Novices' Hurdle Race (1st) - Cheltenham, Mar 17th	£160,162

**Leading Trainers
Prize Money won in Great Britain**

Flat - 2010

Trainer	Number of Starters	Number of Winners	Number of Placed Horses	Strike Rate	Total Prize Money (Win and Place)
1. Richard Hannon	1,341	210	521	15.7%	£3,218,575
2. Sir Michael Stoute	465	73	236	15.7%	£3,027,131
3. Aidan O'Brien, Ireland	89	7	51	7.9%	£2,821,567
4. Mark Johnston	1,458	211	519	14.5%	£2,419,718
5. Sir Henry Cecil	298	62	137	20.8%	£2,267,147
6. Richard Fahey	1,356	181	481	13.3%	£2,075,925
7. Saeed bin Suroor	400	90	187	22.5%	£2,064,698
8. John Gosden	518	105	221	20.3%	£1,714,237
9. B. W. Hills	523	70	202	13.4%	£1,454,320
10. Michael Jarvis	349	86	150	24.6%	£1,300,365

**Leading Trainers
Prize Money won in Great Britain**

Jump - 2010

Trainer	Number of Starters	Number of Winners	Number of Placed Horses	Strike Rate	Total Prize Money (Win and Place)
1. Paul Nicholls	518	119	216	23.0%	£2,490,964
2. Nicky Henderson	544	129	220	23.7%	£1,877,807
3. Nigel Twiston-Davies	682	98	269	14.4%	£1,656,140
4. Jonjo O'Neill	778	98	228	12.6%	£1,583,983
5. Philip Hobbs	571	99	248	17.3%	£1,245,967
6. David Pipe	511	70	173	13.7%	£1,040,641
7. Donald McCain	554	93	207	16.8%	£871,926
8. Alan King	519	77	222	14.8%	£742,997
9. Evan Williams	563	81	226	14.4%	£691,405
10. Howard Johnson	367	55	134	15.0%	£549,086

**Leading Jockeys
Prize Money won in Great Britain**

Flat - 2010

Jockey	Number of Rides	Number of Winners	Number of Placed Horses	Strike Rate	Total Prize Money (Win and Place)
1. Ryan Moore	784	138	367	17.6%	£3,928,872
2. Frankie Dettori	541	123	231	22.7%	£3,205,484
3. Richard Hughes	1,098	192	431	17.5%	£3,169,420
4. Tom Queally	797	101	264	12.7%	£2,747,565
5. Kieren Fallon	820	140	305	17.1%	£2,589,110
6. Johnny Murtagh	118	13	59	11.0%	£2,350,891
7. Paul Hanagan	1,214	205	434	16.9%	£1,846,556
8. William Buick	584	99	225	17.0%	£1,830,623
9. Jamie Spencer	692	108	291	15.6%	£1,617,878
10. Richard Hills	394	57	171	14.5%	£1,147,960

**Leading Jockeys
Prize Money won in Great Britain**

Jump - 2010

Jockey	Number of Rides	Number of Winners	Number of Placed Horses	Strike Rate	Total Prize Money (Win and Place)
1. A. P. McCoy	854	190	324	22.2%	£2,615,333
2. Paddy Brennan	561	84	221	15.0%	£1,406,182
3. Barry Geraghty	239	63	97	26.4%	£1,376,196
4. Richard Johnson	755	158	295	20.9%	£1,300,489
5. R. Walsh	149	39	65	26.2%	£1,169,101
6. Jason Maguire	441	91	171	20.6%	£760,365
7. Tom Scudamore	552	68	197	12.3%	£710,402
8. Paul Moloney	514	74	202	14.4%	£632,255
9. Tom O'Brien	469	74	172	15.8%	£594,139
10. Timmy Murphy	292	38	77	13.0%	£589,226

RACECOURSES MAP & DIRECTORY

Racecourses Map

A map showing the location of every racecourse in Great Britain, indicating whether the course stages Flat meetings only, Jump meetings only, or a combination of Flat and Jump meetings.

Directory of British Racecourses

A directory of British racecourses, providing contact details for every course. Details given include the address, Clerk of the Course, Racecourse Manager, telephone and fax number, email address and website.

Racecourses

To find out more visit:
britishhorseracing.com

- Search for fixtures
- Book tickets online
- Enter competitions
- Check weather reports
- Details of special days

Race Type

- Jump meetings
- Flat meetings
- Flat and jump meetings



DIRECTORY OF BRITISH RACECOURSES:

Aintree

Aintree Racecourse Company Ltd
Ormskirk Road
Aintree
Liverpool
Merseyside
L9 5AS
Clerk of the Course: Andrew Tulloch
Managing Director: Julian Thick
Tel: 0151 5232600
Fax: 0151 522 2920
E: aintree@thejockeyclub.co.uk
www.aintree.co.uk

Bangor-on-Dee

The Racecourse
Overton Road
Bangor-on-Dee
Wrexham
Clwyd
LL13 0DA
Clerk of the Course: Ed Gretton
General Manager: Jeannie Chantler
Tel: 01978 780323
Fax: 01978 780985
E: mail@bangorondeeraces.co.uk
www.bangorondeeraces.co.uk

Brighton

Brighton Racecourse
Freshfield Road
Brighton
East Sussex
BN2 9XZ
Clerk of the Course: Ed Arkell
General Manager: Callum MacKay
Tel: 01273 603580
Fax: 01273 673267
E: racing@brighton-racecourse.co.uk
www.brighton-racecourse.co.uk

Catterick Bridge

The Catterick Racecourse Company Ltd
Catterick Bridge
Richmond
North Yorkshire
DL10 7PE
Clerk of the Course: Fiona Needham
Tel: 01748 811478
Fax: 01748 811082
E: info@catterickbridge.co.uk
www.catterickbridge.co.uk

Chester

Chester Race Company Ltd
The Racecourse
Chester
Cheshire
CH1 2LY
Clerk of the Course: Ed Gretton
Chief Executive: Richard Thomas
Tel: 01244 304600
Fax: 01244 304648
E: enquiries@chester-races.com
www.chester-races.co.uk

Exeter

Exeter Racecourse
Kennford
Exeter
EX6 7XS
Clerk of the Course: Barry Johnson
General Manager: Alice Everitt
Tel: 01392 832599
Fax: 01392 833454
E: exeter@jockeyclubracecourses.com
www.exeter-racecourse.co.uk

Ascot

Ascot Racecourse Ltd
Ascot
Berkshire
SL5 7JX
Clerk of the Course: Chris Stickels
Chief Executive: Charles Barnett
Tel: 08707 227227
Fax: 01344 628299
E: enquiries@ascot.co.uk
www.ascot.co.uk

Bath & Somerset County

Bath Racecourse
Lansdown
Bath
BA1 9BU
Clerk of the Course: Katie Stephens
General Manager: Holly Glover
Tel: 01225 424609
Fax: 01225 444415
E: info@bath-racecourse.co.uk
www.bath-racecourse.co.uk

Carlisle

Carlisle Racecourse
Durdar Road
Carlisle
Cumbria
CA2 4TS
Clerks of the Course: Andrew Tulloch/Kirkland Tellwright
General Manager: Richard Clements
Tel: 01228 554700
Fax: 01228 554747
E: info@carlisle-races.co.uk
www.carlisle-races.co.uk

Cheltenham

Cheltenham Racecourse
Prestbury Park
Cheltenham
Gloucestershire
GL50 4SH
Clerk of the Course: Simon Claisse
Managing Director: Edward Gillespie
Tel: 01242 513014
Fax: 01242 224227
E: cheltenham@jockeyclubracecourses.com
www.cheltenham.co.uk

Doncaster

Doncaster Racecourse
Leger Way
Doncaster
South Yorkshire
DN2 6BB
Clerk of the Course: Jon Pullin
Managing Director: Mark Spincer
Tel: 01302 304200
Fax: 01302 323271
E: info@doncaster-racecourse.co.uk
www.doncaster-racecourse.co.uk

Fakenham

Fakenham Racecourse Ltd
The Racecourse
Fakenham
Norfolk
NR21 7NY
Chief Executive and Clerk of the Course: David Hunter
Tel: 01328 862388
Fax: 01328 855908
E: racing@fakenhamracecourse.co.uk
www.fakenhamracecourse.co.uk

Ayr

Ayr Racecourse
2-6 Whitlets Road
Ayr
Ayrshire
KA8 0JE
Clerk of the Course: Emma Marley
Tel: 01292 264179
Fax: 01292 610140
E: info@ayr-racecourse.co.uk
www.ayr-racecourse.co.uk

Beverley

Beverley Race Company Limited
The Racecourse
York Road
Beverley
East Yorkshire
HU17 8QZ
Clerk of the Course/Chief Executive: Sally Iggulden
Tel: 01482 867488
Fax: 01482 863892
E: beverleyracecourse@yahoo.co.uk
www.beverley-racecourse.co.uk

Cartmel

Cartmel Racecourse
Cartmel
Grange-over-Sands
Cumbria
LA11 6QF
Clerk of the Course: Anthea Morshead
Managing Director: Jonathan Garrett
Tel: 01539 536340
Fax: 01539 536004
E: info@cartmel-racecourse.co.uk
www.cartmel-racecourse.co.uk

Chepstow

Chepstow Racecourse
Chepstow
Monmouthshire
NP16 6BE
Clerk of the Course: Keith Ottesen
Executive Director: Richard Holland
Tel: 01291 622260
Fax: 01291 627061
E: info@chepstow-racecourse.co.uk
www.chepstow-racecourse.co.uk

Epsom Downs

Epsom Downs Racecourse
Epsom Downs
Surrey
KT18 5LQ
Clerk of the Course: Andrew Cooper
General Manager: Rupert Trevelyan
Tel: 01372 726311
Fax: 01372 748253
E: epsom@thejockeyclub.co.uk
www.epsomderby.co.uk

Ffos Las

Ffos Las Racecourse
Trimsaran
Carmarthenshire
SA17 4DE
Clerk of the Course and General Manager: Tim Long
Tel: 01554 811092
Fax: 01554 811037
E: info@ffoslasracecourse.com
www.ffoslasracecourse.com

DIRECTORY OF BRITISH RACECOURSES (continued):

Folkestone

Folkestone Racecourse Plc
Stone Street
Westenhanger
Near Hythe
Kent
CT21 4HX
Clerk of the Course: Andy Waitt
Racecourse Manager: Emma Santer
Tel: 01303 266407
Fax: 01303 260185
E: emma.santer@folkestone-racecourse.co.uk
www.folkestone-racecourse.co.uk

Fontwell Park

Fontwell Park Racecourse
Fontwell
Nr Arundel
West Sussex
BN18 0SX
Clerk of the Course: Edward Arkell
Executive Director: Phil Bell
Tel: 01243 543335
Fax: 01243 543904
E: info@fontwellpark.co.uk
www.fontwellpark.co.uk

Goodwood

Goodwood Racecourse
Goodwood
Chichester
West Sussex
PO18 0PS
Clerk of the Course: Seamus Buckley
Managing Director: Adam Waterworth
Tel: 01243 755022
Fax: 01243 755025
E: racing@goodwood.co.uk
www.goodwood.co.uk/horseracing/

Hamilton Park

The Hamilton Park Racecourse
Bothwell Road
Hamilton
Lanarkshire
ML3 0DW
Clerk of the Course: Hazel Peplinski
Chief Executive: Vivien Kyles
Tel: 01698 283806
Fax: 01698 286621
E: enquiries@hamilton-park.co.uk
www.hamilton-park.co.uk

Haydock Park

Haydock Park Racecourse
Newton-Le-Willows
Merseyside
WA12 0HQ
Clerk of the Course: Kirkland Tellwright
Managing Director: Dickon White
Tel: 01942 725963
Fax: 01942 270879
E: haydockpark@thejockeyclub.co.uk
www.haydock-park.co.uk

Hereford

Hereford Racecourse
Roman Road
Hereford
HR4 9QU
Clerk of the Course: Keith Ottesen
Executive Director: Richard Holland
Tel: 01432 273560
Fax: 01432 352807
E: info@hereford-racecourse.co.uk
www.hereford-racecourse.co.uk

Hexham

Hexham Steeplechase Co Ltd
The Racecourse Office
The Riding
Hexham
Northumberland
NE46 4PF
Clerk of the Course: James Armstrong
Chief Executive and Club Secretary: Charles Enderby
Tel: 01434 606881
Fax: 01434 606814
E: admin@hexham-racecourse.co.uk
www.hexham-racecourse.co.uk

Huntingdon

Huntingdon Racecourse
Brampton
Huntingdon
Cambridgeshire
PE28 4NL
Clerk of the Course: Andrew Morris
Managing Director: Sophie Hodgkinson
Tel: 01480 453373
Fax: 01480 455275
E: huntingdon@jockeyclubracecourses.com
www.huntingdon-racecourse.co.uk

Kelso

Kelso Races Ltd
18-20 Glendale Road
Wooler
Northumberland
NE71 6DW
Clerk of the Course: Hazel Peplinski
Managing Director: Richard Landale
Tel: 01668 280800
Fax: 01668 281113
E: info@kelso-races.co.uk
www.kelso-races.co.uk

Kempton Park

Kempton Park Racecourse
Staines Road East
Sunbury on Thames
Middlesex
TW16 5AQ
Clerk of the Course: Brian Clifford
Managing Director: Amy Starkey
Tel: 01932 782292
Fax: 01932 782044
E: kempton@jockeyclubracecourses.com
www.kempton.co.uk

Leicester

Leicester Racecourse Co Ltd
Oadby
Leicester
LE2 4AL
Clerk of the Course: James Stevenson
General Manager: David Maykels
Tel: 0116 2716515
Fax: 0116 2711746
E: info@leicester-racecourse.com
www.leicester-racecourse.co.uk

Lingfield Park

Lingfield Park Racecourse & Golf Club
Racecourse Road
Lingfield
Surrey
RH7 6PQ
Clerk of the Course: Neil Mackenzie Ross
Tel: 01342 834800
Fax: 01342 835874
E: info@lingfieldpark.co.uk
www.lingfield-racecourse.co.uk

Ludlow

Ludlow Race Club Ltd
Ludlow Racecourse
Bromfield
Ludlow
Shropshire
SY8 2BT
Clerk of the Course, Secretary and Manager: Bob Davies
Tel: 01584 856221
Fax: 01584 856217 (racedays only)
E: mail@ludlowracecourse.co.uk
www.ludlowracecourse.co.uk

Market Rasen

Market Rasen Racecourse
Legsby Road
Market Rasen
Lincolnshire
LN8 3EA
Clerk of the Course: Sulekha Varma
Managing Director: Pip Kirkby
Tel: 01673 843434
Fax: 01673 844532
E: marketrasen@jockeyclubracecourses.com
www.marketrasenraces.co.uk

Musselburgh

Musselburgh Racecourse
Linkfield Road
Musselburgh
East Lothian
EH21 7RG
Clerk of the Course: Anthea Morshead
General Manager: Bill Farnsworth
Tel: 0131 6652859
Fax: 0131 6532083
E: info@musselburgh-racecourse.co.uk
www.musselburgh-racecourse.co.uk

Newbury

Newbury Racecourse PLC
The Racecourse
Newbury
Berkshire
RG14 7NZ
Clerk of the Course: Richard Osgood
Managing Director: Stephen Higgins
Tel: 01635 40015
Fax: 01635 528354
E: info@newbury-racecourse.co.uk
www.newbury-racecourse.co.uk

Newcastle

Newcastle Racecourse
High Gosforth Park
Newcastle upon Tyne
NE3 5HP
Clerk of the Course: James Armstrong
Executive Director: Simon Lane
Tel: 0191 2362020
Fax: 0191 2367761
E: info@newcastle-racecourse.co.uk
www.newcastle-racecourse.co.uk

Newmarket

Newmarket Racecourses
Westfield House
The Links
Newmarket
Suffolk
CB8 0TG
Clerk of the Course: Michael Prosser
Managing Director: Stephen Wallis
Tel: 01638 663482
Fax: 01638 663044
E: newmarket@jockeyclubracecourses.com
www.newmarketracecourses.co.uk

DIRECTORY OF BRITISH RACECOURSES (continued):

Newton Abbot

The Racecourse
Newton Abbot
Devon
TQ12 3AF
Clerk of the Course: Jason Loosemore
Managing Director: Pat Masterson
Tel: 01626 353235
Fax: 01626 336972
E: management@newtonabbotracing.com
www.newtonabbotracing.com

Nottingham

Nottingham Racecourse
Colwick Park
Nottingham
NG2 4BE
Clerk of the Course: Sulekha Varma
Managing Director: Pip Kirkby
Tel: 0870 8507634
Fax: 0115 9584515
E: nottingham@jockeyclubracecourses.com
www.nottinghamracecourse.co.uk

Perth

Perth Racecourse
Scone Palace Park
Perth
PH2 6BB
Clerk of the Course: Harriet Graham
General Manager: Sam Morshead
Tel: 01738 551597
Fax: 01738 553021
E: sam@perth-races.co.uk
www.perth-races.co.uk

Plumpton

Plumpton Racecourse
Plumpton
East Sussex
BN7 3AL
Clerk of the Course: Mark Cornford
Chief Executive: Claire Sheppard
Tel: 01273 890383
Fax: 01273 891557
E: racing@plumptonracecourse.co.uk
plumptonracecourse.co.uk

Pontefract

Pontefract Park Race Co. Ltd.
Administration Offices
Pontefract Park
Park Road
Pontefract
West Yorkshire
WF8 4QD
Clerk of the Course and
Managing Director: Norman Gundill
Tel: 01977 781307
Fax: 01977 781850
E: info@pontefract-races.co.uk
www.pontefract-races.co.uk

Redcar

The Racecourse
Redcar
Tees Valley
TS10 2BY
Clerk of the Course: Jonjo Sanderson
Racecourse Manager: Amy Fair
Tel: 01642 484068
Fax: 01642 488272
E: info@redcarracing.co.uk
www.redcarracing.co.uk

Ripon

Ripon Race Company Ltd
The Racecourse
Boroughbridge Road
Ripon
North Yorkshire
HG4 1UG
Managing Director and Clerk of the Course:
James Hutchinson
Tel: 01765 530530
Fax: 01765 698900
E: info@ripon-races.co.uk
www.ripon-races.co.uk

Salisbury

Salisbury Racecourse
Netherhampton
Salisbury
Wiltshire
SP2 8PN
General Manager: Jeremy Martin
Tel: 01722 326461
Fax: 01722 412710
E: jeremymartin@salisburyracecourse.co.uk
www.salisburyracecourse.co.uk

Sandown Park

Sandown Park Racecourse
Portsmouth Road
Esher
Surrey
K10 9AJ
Clerk of the Course and
Director of Racing: Andrew Cooper
Managing Director: David Mackinnon
Tel: 01372 464348
Fax: 01372 470427
E: sandown@jockeyclubracecourses.com
www.sandown.co.uk

Sedgefield

Sedgefield Racecourse
Racecourse Road
Sedgefield
Stockton-on-Tees
TS21 2HW
General Manager: Jill Williamson
Clerk of the Course: Phil Tuck
Tel: 01740 621925
Fax: 01740 620663
E: info@sedgefield-racecourse.co.uk
www.sedgefield-racecourse.co.uk

Southwell

Southwell Racecourse
Rolleston
Nr Newark
Nottinghamshire
NG25 0TS
Clerk of the Course: Roderick Duncan
Tel: 01636 814481
Fax: 01636 812271
E: info@southwell-racecourse.co.uk
www.southwell-racecourse.co.uk

Stratford-on-Avon

Stratford-on-Avon Racecourse
Luddington Road
Stratford-upon-Avon
Warwickshire
CV37 9SE
Secretary and Clerk of the Course: Stephen Lambert
Tel: 01789 267949
Fax: 01789 415850
E: info@stratfordracecourse.net
www.stratfordracecourse.net

Taunton

Taunton Racecourse
Orchard Portman
Taunton
Somerset
TA3 7BL
Clerk of the Course: Michael Trickey
Managing Director: John Hills
Tel: 01823 337172
Fax: 01823 325881
E: info@tauntonracecourse.co.uk
www.tauntonracecourse.co.uk

Thirsk

Thirsk Racecourse
Station Road
Thirsk
North Yorkshire
YO7 1QL
Clerk of the Course: Christopher Tetley
Tel: 01845 522276
Fax: 01845 525353
E: info@thirskracecourse.net
www.thirskracecourse.net

Towcester

Towcester Racecourse
London Road
Towcester
Northamptonshire
NN12 6LB
Clerk of the Course: Robert Bellamy
General Manager: Kevin Ackerman
Tel: 01327 353414
Fax: 01327 358534
E: info@towcester-racecourse.co.uk
www.towcester-racecourse.co.uk

Uttoxeter

Uttoxeter Racecourse
Wood Lane
Uttoxeter
Staffordshire
ST14 8BD
Clerk of the Course: Charlie Moore
General Manager: David MacDonald
Tel: 01889 562561
Fax: 01889 562786
E: info@uttoxeter-racecourse.co.uk
www.uttoxeter-racecourse.co.uk

Warwick

Warwick Racecourse
Hampton Street
Warwick
Warwickshire
CV34 6HN
Clerk of the Course: Andrew Morris
Managing Director: Huw Williams
Tel: 01926 491553
Fax: 01926 403223
E: warwick@jockeyclubracecourses.com
www.warwickracecourse.co.uk

Wetherby

Wetherby Steeplechase Committee Ltd
The Racecourse
York Road
Wetherby
West Yorkshire
LS22 5EJ
Chief Executive and Clerk of the Course: Jonjo Sanderson
Tel: 01937 582035
Fax: 01937 588021
E: info@wetherbyracing.co.uk
www.wetherbyracing.co.uk

DIRECTORY OF BRITISH RACECOURSES (continued):

Wincanton

Wincanton Racecourse
Wincanton
Somerset
BA9 8BJ
Clerk of the Course: Barry Johnson
General Manager: Steve Parlett
Tel: 01963 32344
Fax: 01963 34668
E: wincanton@thejockeyclub.co.uk
www.wincantonracecourse.co.uk

Windsor

Windsor Racecourse
Maidenhead Road
Windsor
Berkshire
SL4 5JJ
Clerk of the Course and
Operations Manager: Gemma Charrington
Managing Director: Daniel Clark
Tel: 01753 498400
Fax: 01753 830156
E: office@windsor-racecourse.co.uk
www.windsor-racecourse.co.uk

Wolverhampton

Wolverhampton Racecourse
Dunstall Park
Wolverhampton
WV6 0PE
Clerk of the Course: Fergus Cameron
Managing Director: David Roberts
Tel: 01902 390000
Fax: 01902 310884
E: info@wolverhampton-racecourse.co.uk
www.wolverhampton-racecourse.co.uk

Worcester

Worcester Racecourse Ltd.
Pitchcroft
Worcester
WR1 3EJ
Clerk of the Course: Fergus Cameron
Managing Director: Dave Roberts
Tel: 01905 25364
Fax: 01905 617563
E: info@worcester-racecourse.co.uk
www.worcester-racecourse.co.uk

Great Yarmouth

Great Yarmouth Racecourse
Jellicoe Road
Great Yarmouth
Norfolk
NR30 4AU
Clerk of the Course: Richard Aldous
General Manager: Glenn Tubby
Tel: 01493 842527
Fax: 01493 843254
E: info@greatyarmouth-racecourse.co.uk
www.greatyarmouth-racecourse.co.uk

York

York Racecourse
York
YO23 1EX
Chief Executive & Clerk of the Course: William Derby
Tel: 01904 620911
Fax: 01904 611071
E: enquiries@yorkracecourse.co.uk
www.yorkracecourse.co.uk

Every care has been taken to ensure that the details of this directory are accurate at the time of going to print.

SECTION A

BREEDING

TABLE 1

Breeding Statistics

Lines 1 to 6

Registered Stallions and Mares Reported at Stud

The number of Registered Stallions in Great Britain and Ireland and the number of Mares Reported at Stud in Great Britain and Ireland, as contained in the Return of Mares.

Lines 7 to 13

Number of Live Thoroughbred Foals

The number of live Thoroughbred Foals born in Great Britain (England, Scotland and Wales) and Ireland (Irish Republic and Northern Ireland) as reported to the Stud Book Authority during the year and as contained in the Return of Mares.

Lines 14 to 16

Number of Names Registered under the Orders and Rules of Racing

The number of horses' names registered in a year with the Names Section of Racing Administration Department at Weatherbys and expressed in two parts – Thoroughbred and Non-Thoroughbred.

Line 17

Number of Horses Exported from Great Britain and Ireland

The number of horses for which Application forms for Release of Stud Book Certificates have been received and actioned by the Stud Book Authority during the year, as reported in the Supplement to the Return Of Mares.

TABLE 2

Analysis of Exported Horses

An analysis by country of importation of the number of horses exported from Great Britain and Ireland during the year, as reported in the Supplement to the Return Of Mares. The top 15 destination countries are shown, together with an aggregate of all the other destinations.

Breeding Statistics

	2006	2007	2008	2009	2010
1. No. of Registered Stallions That Stood in Great Britain	374	352	345	347	306
2. No. of Registered Stallions That Stood in Ireland	392	399	411	367	326
3. Total No. of Registered Stallions That Stood in Great Britain and Ireland	766	751	756	714	632
4. No. of Mares Reported at Stud in Great Britain	11,326	11,091	10,740	10,624	9,826
5. No. of Mares Reported at Stud in Ireland	19,251	20,700	20,038	18,851	15,345
6. Total No. of Mares Reported at Stud in Great Britain and Ireland	30,577	31,791	30,778	29,475	25,171
7. No. of Live Thoroughbred Foals in Great Britain - Colts	2,667	2,966	2,959	2,725	2,340
8. No. of Live Thoroughbred Foals in Great Britain - Fillies	2,819	2,873	2,961	2,870	2,325
9. No. of Live Thoroughbred Foals in Great Britain - TOTAL	5,486	5,839	5,920	5,595	4,665
10. No. of Live Thoroughbred Foals in Ireland - Colts	5,933	6,331	6,325	5,460	3,993
11. No. of Live Thoroughbred Foals in Ireland - Fillies	6,071	6,302	6,094	4,707	3,595
12. No. of Live Thoroughbred Foals in Ireland - TOTAL	12,004	12,633	12,419	10,167	7,588
13. Total No. of Live Thoroughbred Foals in Great Britain and Ireland	17,490	18,472	18,339	15,762	12,253
14. No. of Names Registered Under the Rules of Racing - Thoroughbred	14,997	15,669	15,220	14,356	14,010
15. No. of Names Registered Under the Rules of Racing - Non-Thoroughbred	538	480	441	427	392
16. No. of Names Registered Under the Rules of Racing - TOTAL	15,535	16,149	15,661	14,783	14,402
17. No. of Horses Exported from Great Britain and Ireland	3,439	3,091	3,413	3,471	3,500

Analysis of Exported Horses

2010

	Country	Mares	Fillies, 4 yrs and Under	Colts, 4 yrs and Under	Geldings	Horses	Total
1	France	143	576	415	51	4	1,189
2	Italy	35	152	172	11	3	373
3	United Arab Emirates	6	55	172	78	13	324
4	USA	38	104	64	30	2	238
5	Germany	20	51	53	22	1	147
6	Spain	11	47	50	2	1	111
7	Kingdom of Saudi Arabia	32	42	15	18	2	109
8	Greece	0	46	30	30	1	107
9 =	Hong Kong	0	0	60	42	0	102
9 =	Sweden	8	29	35	28	2	102
11	India	83	8	0	0	4	95
12	Qatar	17	33	22	11	0	83
13	Australia	9	24	12	3	2	50
14	Turkey	36	4	0	0	2	42
15	Denmark	2	14	6	15	1	38
	Others	49	137	133	62	9	390
GRAND TOTAL							3,500

SECTION B

OWNERSHIP

TABLE 1

New Registrations

Line 1 Registered Owners

The total number of Owners becoming registered during the year.

Line 2 Colours

The number of new Colours registered during the year.

Line 3 Joint Ownerships

The number of new Joint Ownerships registered during the year.

Line 4 Joint Ownership Names

The number of new Joint Ownership Names registered during the year.

Line 5 Racing Partnerships

The number of new Racing Partnerships registered during the year.

Line 6 Leases

The number of new Leases registered during the year.

Line 7 Registered Companies

The number of new Companies registered for the purpose of owning horses during the year.

Line 8 Recognised Business Partnerships

The number of new Business Partnerships registered for the purpose of owning horses during the year.

Registrations Current at Year End

Line 1 Registered Owners

The total number of Registered Owners on file as at the year end. Owners are normally kept on file until they have not had a horse in training for 24 consecutive months.

Line 2 Colours

The total number of Colours on file as at the year end.

Line 3
Joint Ownerships

The total number of Joint Ownerships held on file as at the year end.

Line 4
Joint Ownership Names

The total number of Joint Ownership Names held on file as at the year end.

Line 5
Racing Partnerships

The total number of Racing Partnerships held on file as at the year end.

Line 6
Leases

The total number of Leases in operation as at the year end.

Line 7
Registered Companies

The total number of Company Registrations in operation as at the year end.

Line 8
Recognised Business Partnerships

The total number of Business Partnerships in operation as at the year end.

TABLE 2

Number of Owners Showing their Numbers of Horses in Training

The number of Owners categorised by the number of horses in training that they own. **With horses owned jointly, all the partners or lessees are counted and their shares are each counted as one horse.**

The figures shown in the table for each year are an average of the 12 monthly figures produced. As the figures are rounded to the nearest whole number, the total may not equal the sum of the individual parts.

TABLE 3

Numbers of Owners With Horses in Training by Type of Ownership

The numbers of owners with horses in training, categorised by type of ownership. The Inclusive Figures allow for duplication of a single owner in more than one of the categories, depending on the types of ownership involvement, and therefore show the total number of different owners involved in each category. The Exclusive Figures show a more precise breakdown of ownership types by which each owner with horses in training is categorised in only one of the categories. The sum of these categories is, therefore, equal to the number of different owners with horses in training as categorised in Table B2.

The figures shown in the table for each year are an average of the 12 monthly figures produced. As the figures are rounded to the nearest whole number, the total may not equal the sum of the individual parts.

Registrations

New Registrations

	2006	2007	2008	2009	2010
Registered Owners	2,169	2,104	1,950	1,742	1,636
Colours	3,049	3,112	3,176	3,338	3,331
Joint Ownerships	2,800	3,008	2,912	2,970	2,868
Joint Ownership Names	960	1,002	951	980	1,061
Racing Partnerships	486	592	505	438	420
Leases	316	389	350	358	333
Registered Companies	89	62	76	70	60
Recognised Business Partnerships	2	3	2	0	0

Registrations Current At Year End

	2006	2007	2008	2009	2010
Registered Owners	17,816	17,999	17,745	17,434	16,852
Colours	19,660	20,142	20,368	20,354	20,161
Joint Ownerships	4,447	4,575	4,672	4,617	4,512
Joint Ownership Names	3,259	3,687	4,058	4,252	4,376
Racing Partnerships	2,457	2,643	2,667	2,627	2,533
Leases	271	335	326	326	326
Registered Companies	671	639	629	610	585
Recognised Business Partnerships	42	40	39	32	27

Ownership Statistics

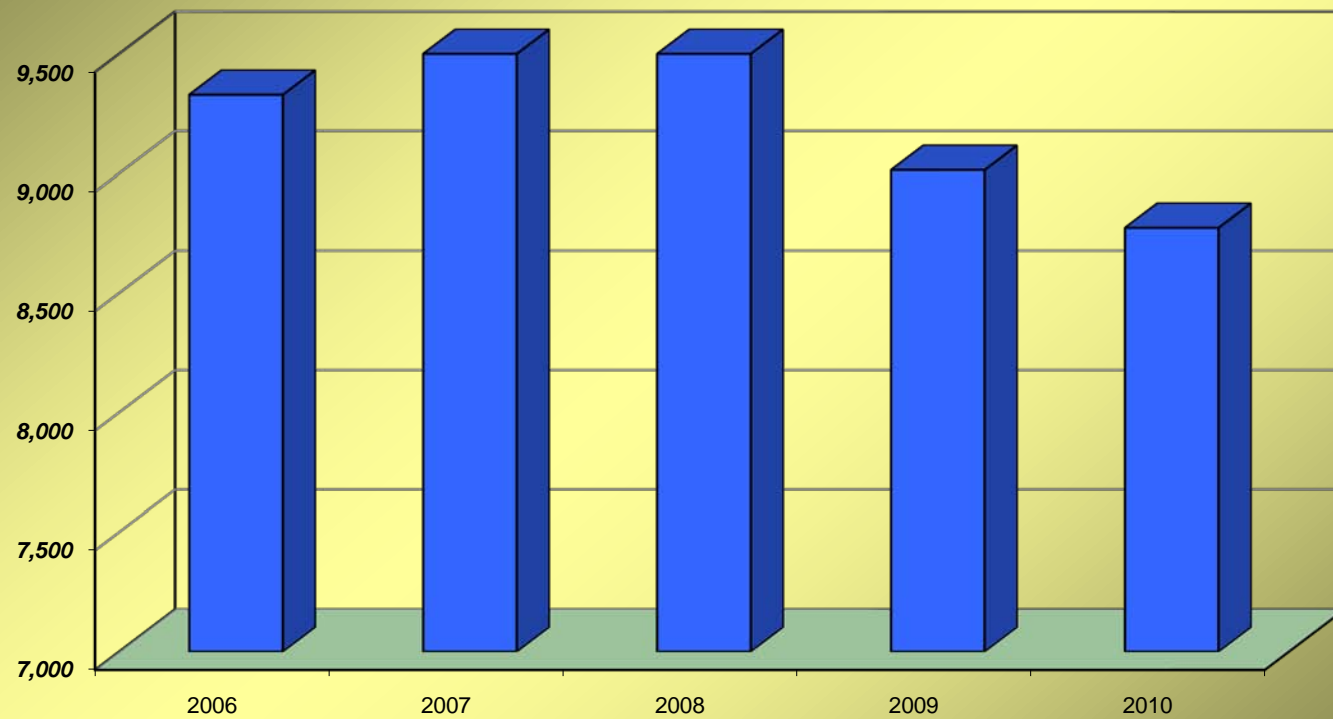
Number of Owners With a Horse in Training by the Number of Horses They Own

			2006	2007	2008	2009	2010
No. of Owners with	-	1 Horse in Training	5,523	5,595	5,555	5,157	5,030
		2 Horses in Training	1,771	1,865	1,850	1,792	1,712
		3 Horses in Training	792	796	782	752	757
		4 Horses in Training	397	397	416	415	389
		5 Horses in Training	228	246	251	234	239
		6-10 Horses in Training	418	437	452	430	407
		11-20 Horses in Training	141	151	160	155	170
		21+ Horses in Training	60	65	73	79	70
Total No. of Owners With a Horse in Training			9,329	9,551	9,539	9,014	8,774

Notes

With horses owned jointly, all the partners or lessees are counted and their shares are each counted as one horse.

Total No. of Owners With a Horse in Training



Ownership Statistics

Number of Owners With a Horse in Training by Type of Ownership

	2006	2007	2008	2009	2010
INCLUSIVE FIGURES					
No. of Sole Owners (excluding Company)	3,454	3,526	3,489	3,357	3,265
No. of Company Sole Owners	341	321	329	311	296
No. of Business Partnerships	33	29	31	28	28
No. of Joint Ownership Owners	4,758	4,913	4,914	4,643	4,626
No. of Racing Partnership Owners	2,387	2,485	2,554	2,402	2,301
EXCLUSIVE FIGURES					
No. of Sole Owners (excluding Company)	2,586	2,585	2,545	2,445	2,342
No. of Company Sole Owners	275	256	264	254	239
No. of Business Partnership Sole Owners	26	22	21	19	18
No. of Sole Owners and Joint Ownership Owners	868	941	943	912	922
No. of Company Owners and Joint Ownership Owners	65	65	65	58	57
No. of Business Partners and Joint Ownership Owners	7	7	9	9	11
No. of Joint Ownership Owners only (including Companies)	5,502	5,675	5,690	5,318	5,185
TOTAL	9,329	9,551	9,539	9,014	8,774

SECTION C

TRAINING AND RIDING

TABLE 1

Licences and Permits to Train and Ride

Line 1

Trainers Combined Licences

The number of Licences issued by the Licensing Committee, to train horses for both Flat and Jump races, during the year.

Line 2

Trainers Flat Only Licences

The number of Licences to train horses, for Flat races only, issued during the year.

Line 3

Trainers Jump Only Licences

The number of Licences to train horses, for Jump races only, issued during the year.

Line 4

Permits to Train

The number of Permits issued for the training of horses (Jump races only) during the season specified.

Line 5

Flat Jockeys Licences

The number of Professional Jockey Licences issued by the Licensing Committee to Flat Jockeys during the year.

Line 6

Jump and Conditional Jockey Licences

The number of Professional Jockey Licences issued by the Licensing Committee to Jump and Conditional Jockeys during the season specified.

Line 7

Apprentice Jockey Licences

The number of Apprentice Jockey Licences issued by the Licensing Committee during the year.

Line 8

Amateur Riders Permits

The number of Permits issued to Amateur Riders by the Licensing Committee during the season specified.

Category A permits entitle the holder to ride in all Amateur Flat Races and Steeple Chases and Hurdle Races confined to Amateur Riders.

Category B permits also allow the holder to ride in Steeple Chases and Hurdle Races open to Professional Jockeys.

TABLE 2

Horses in Training by Type and Age of Horse

An analysis of the number of horses in training taken from Trainers Returns and broken down into: Flat-Only horses, Jump-Only horses, Dual-Purpose horses and Hunters' Steeple Chasers. Within each of these sub-sections, the horse population is broken down by age group.

Due to a change in the way Dual-Purpose horses have been classified from February 2009 onwards, the breakdown between Flat-Only, Jump-Only and Dual-Purpose horses may not be comparable with previous years.

The figures shown in the table for each year are an average of the 12 monthly figures produced. As the figures are rounded to the nearest whole number, the total may not equal the sum of the individual parts.

For Hunter Chasers, only a total figure is shown. This is the highest number recorded during the year, typically the figure for May or June.

TABLE 3

Horses in Training by Type of Ownership

An analysis of the number of horses in training taken from Trainers Returns giving a breakdown of the number of horses in training by ownership type and an analysis of the horses owned jointly.

The figures shown in the table for each year are an average of the 12 monthly figures produced. As the figures are rounded to the nearest whole number, the total may not equal the sum of the individual parts.

TABLE 4

Horses in Training – Size of Trainers' Yards

An analysis of the number of horses in training taken from Trainers Returns and broken down by type of trainer and number of horses in each yard by horse type, except for Permit Holders and Hunter Trainers, where the breakdown by horse type is not shown.

The figures shown in the table for each year are an average of the 12 monthly figures produced, except for Hunter Trainers, where an average of the monthly figures for February to June is shown. As the figures are rounded to the nearest whole number, the total may not equal the sum of the individual parts.

Training and Riding

Licences and Permits to Train and Ride

		2005/2006 Jump Season	2006/2007 Jump Season	2007/2008 Jump Season	2008/2009 Jump Season	2009/2010 Jump Season
		2006 Flat Season	2007 Flat Season	2008 Flat Season	2009 Flat Season	2010 Flat Season
TRAINERS						
Combined Licences		503	520	508	496	487
Flat Only Licences		48	50	40	42	40
Jump Only Licences		61	74	52	48	46
Permits to Train		198	183	156	141	137
RIDERS						
Flat Professional Licences		125	130	127	135	125
Jump Professional Licences	Jump	105	101	102	98	93
	Conditional	163	132	151	156	151
Flat Apprentice Licences		219	214	229	216	205
Amateur Riders' Permits (July 1st - June 30th)	Category A	374	383	396	373	351
	Category B	247	243	222	217	213

Horses in Training

Flat-Only Horses¹

	2006	2007	2008	2009	2010
2-y-o	3,085	3,420	3,396	3,160	3,100
3-y-o	2,668	2,576	2,874	2,790	2,690
4-y-o	1,157	1,201	1,103	1,288	1,304
5-y-o+	1,378	1,360	1,411	1,679	1,754
TOTAL	8,288	8,557	8,784	8,917	8,848

Dual-Purpose Horses¹

	2006	2007	2008	2009	2010
3-y-o	123	146	140	83	67
4-y-o	421	491	500	228	191
5-y-o+	1,309	1,496	1,654	765	505
TOTAL	1,854	2,133	2,293	1,075	762

NOTES

1 Due to changes in the way that Dual Purposes horses are classified from February 2009 onwards, the figures for Flat-Only, Jump-Only and Dual-Purpose horses may not be comparable with previous years.

2 The figure for Hunter Chasers is the highest point reached during the year, typically in May or June, whereas all other figures are an average of the 12 monthly figures for each year.

Jump-Only Horses¹

	2006	2007	2008	2009	2010
3-y-o	92	93	91	106	104
4-y-o	558	548	484	619	643
5-y-o+	3,503	3,546	3,502	3,952	3,982
TOTAL	4,153	4,187	4,077	4,677	4,730

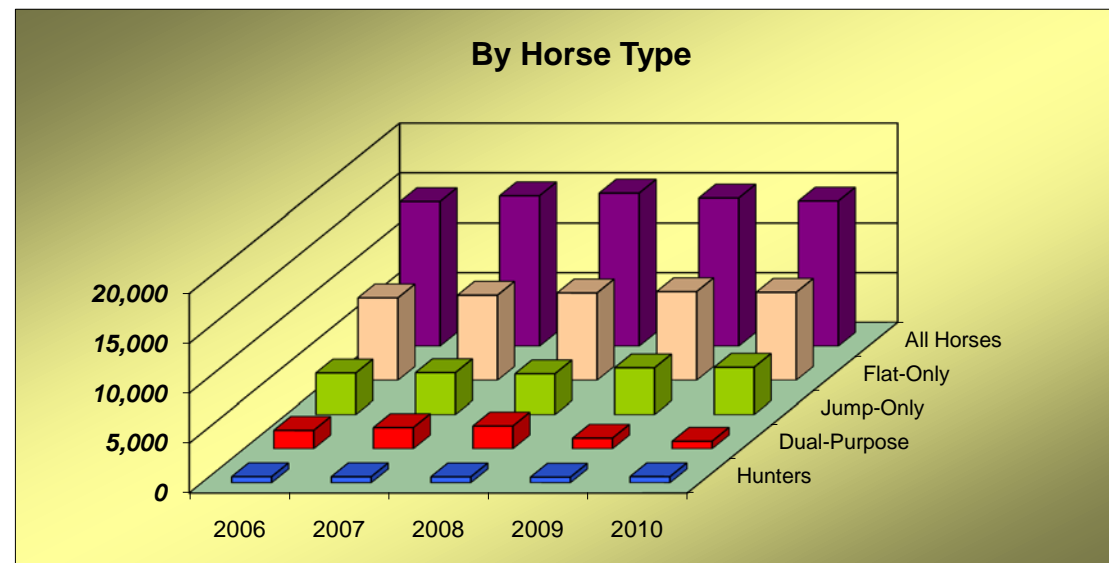
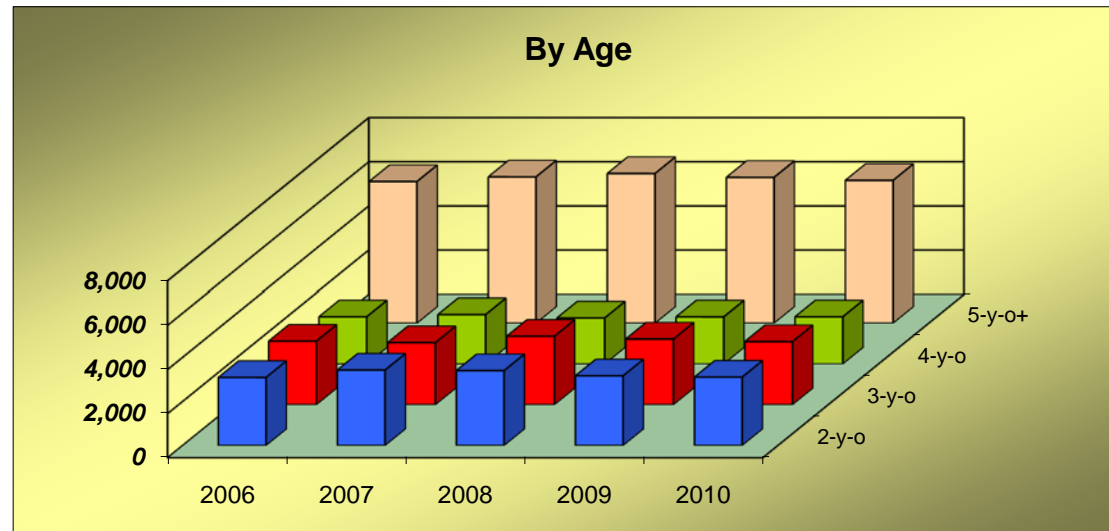
Hunter Chasers²

	2006	2007	2008	2009	2010
TOTAL	622	617	606	574	629

All Horses

	2006	2007	2008	2009	2010
2-y-o	3,085	3,420	3,396	3,160	3,100
3-y-o	2,882	2,815	3,105	2,979	2,862
4-y-o	2,136	2,240	2,086	2,135	2,138
5-y-o+	6,398	6,608	6,761	6,586	6,450
TOTAL	14,501	15,083	15,349	14,859	14,549

Horses in Training



Horses in Training by Type of Ownership

	2006	2007	2008	2009	2010
No. of Horses Owned by a Sole Individual	8,256	8,621	8,683	8,519	8,333
No. of Horses Owned by a Sole Company	1,197	1,045	1,096	1,027	1,084
No. of Horses Owned by a Sole Business Partnership	89	88	83	77	90
No. of Horses Owned by a Joint Ownership	3,044	3,117	3,132	2,947	2,911
No. of Horses Owned by a Racing Partnership	2,209	2,424	2,557	2,529	2,364
TOTAL	14,795	15,294	15,550	15,098	14,781
No. of Horses Owned Jointly by a Party of 2	4,219	4,062	4,062	4,062	3,911
No. of Horses Owned Jointly by a Party of 3	970	942	942	942	914
No. of Horses Owned Jointly by a Party of 4	329	297	297	297	285
No. of Horses Owned Jointly by a Party of 5+	171	175	175	175	165
TOTAL NO. OF HORSES OWNED JOINTLY	5,253	5,540	5,689	5,476	5,274

Notes

The figure for the Total Number of Horses in Training shown in this table will overstate the figure shown in Table C2 due to the fact that the above figures also include Yearlings.

Horses owned jointly includes horses owned by Joint Ownerships and Racing Partnerships.

Horses in Training - Size of Trainers' Yards

Licensed Trainers

	2006	2007	2008	2009	2010
No. of Yards With 1-10 Flat-Only Horses	245	252	253	255	255
11-15 Flat-Only Horses	46	47	45	48	49
16-20 Flat-Only Horses	30	29	24	33	29
21-30 Flat-Only Horses	33	30	34	30	36
31-40 Flat-Only Horses	22	21	22	24	24
41+ Flat-Only Horses	58	63	65	65	62
No. of Yards With 1-10 Jump-Only Horses	294	279	303	299	292
11-15 Jump-Only Horses	33	34	31	39	39
16-20 Jump-Only Horses	18	17	16	20	18
21-30 Jump-Only Horses	14	11	14	19	18
31-40 Jump-Only Horses	8	8	8	8	11
41+ Jump-Only Horses	15	16	15	18	18
No. of Yards With 1-10 Dual-Purpose Horses	342	355	368	310	272
11-15 Dual-Purpose Horses	20	21	24	9	6
16-20 Dual-Purpose Horses	8	11	9	3	0
21-30 Dual-Purpose Horses	5	6	6	1	0
31-40 Dual-Purpose Horses	3	2	4	0	0
41+ Dual-Purpose Horses	1	3	4	1	0
No. of Yards With 1-10 Horses In Total	217	223	232	226	220
11-15 Horses In Total	99	90	88	88	89
16-20 Horses In Total	57	65	63	64	60
21-30 Horses In Total	74	66	65	66	72
31-40 Horses In Total	37	40	42	38	37
41+ Horses In Total	92	97	102	99	92
TOTAL YARDS WITH A HORSE IN TRAINING	576	581	591	581	569

Horses in Training - Size of Trainers' Yards

Permit Holders and Hunter Trainers

Permit Holders

	2006	2007	2008	2009	2010
No. of Yards With 1-10 Horses In Total	151	141	122	113	111
11+ Horses In Total	7	5	4	3	2
TOTAL YARDS WITH A HORSE IN TRAINING	157	146	126	116	113

Hunter Trainers

	2006	2007	2008	2009	2010
No. of Yards With 1-10 Horses In Total	283	281	276	275	297
11+ Horses In Total	0	0	0	1	3
TOTAL YARDS WITH A HORSE IN TRAINING	283	282	276	276	299

Notes

The figure for Hunter Trainers is an average of the figures for February to June, whereas for Permit Holders it is an average of figures for January to December.

Horses in Training - Size of Trainers' Yards

All Trainers

	2006	2007	2008	2009	2010
No. of Yards With 1-10 Flat-Only Horses	250	259	258	269	272
11-15 Flat-Only Horses	46	47	45	48	49
16-20 Flat-Only Horses	30	29	24	33	29
21-30 Flat-Only Horses	33	30	34	30	36
31-40 Flat-Only Horses	22	21	22	24	24
41+ Flat-Only Horses	58	63	65	65	62
No. of Yards With 1-10 Jump-Only Horses	582	587	560	551	555
11-15 Jump-Only Horses	38	38	34	43	41
16-20 Jump-Only Horses	20	17	16	20	19
21-30 Jump-Only Horses	14	11	14	19	18
31-40 Jump-Only Horses	8	8	8	8	11
41+ Jump-Only Horses	15	16	15	18	18
No. of Yards With 1-10 Dual-Purpose Horses	343	359	371	314	277
11-15 Dual-Purpose Horses	20	21	24	9	6
16-20 Dual-Purpose Horses	8	11	9	3	0
21-30 Dual-Purpose Horses	5	6	6	1	0
31-40 Dual-Purpose Horses	3	2	4	0	0
41+ Dual-Purpose Horses	1	3	4	1	0
No. of Yards With 1-10 Horses In Total	506	512	492	487	493
11-15 Horses In Total	105	95	91	91	91
16-20 Horses In Total	59	65	63	65	61
21-30 Horses In Total	74	67	65	66	72
31-40 Horses In Total	37	40	42	38	37
41+ Horses In Total	92	98	102	99	92
TOTAL YARDS WITH A HORSE IN TRAINING	872	876	855	846	846

SECTION D

FIXTURES, RACES AND PRIZE MONEY

TABLE 1

Fixtures

A fixture is defined as **one** day's racing at **one** course.

TABLE 2

Field Sizes - Flat

The number of Runners (1-5, 6-10, 11-15, 16-20 and 21+) in the number of races shown monthly for Flat races. The number of Walkovers (if any) is shown separately.

TABLE 3

Field Sizes - Jump

The number of Runners (1-5, 6-10, 11-15, 16-20 and 21+) in the number of races shown monthly for Hurdle Races and National Hunt Flat Races, and for Steeple Chases. The number of Walkovers (if any) is shown separately.

TABLE 4

Field Sizes – Flat and Jump

The number of Runners (1-5, 6-10, 11-15, 16-20 and 21+) in the number of races shown as a total for each of the last 5 years for Flat races and Jump races. A separate table for Hurdle Races and National Hunt Flat Races and for Steeple Chases is also shown. The number of Walkovers (if any) is shown separately.

TABLE 5

Flat Racing

Number of Different Horses Which Ran – by Age

An analysis of the number of different horses which ran on the Flat under Rules in each calendar year as 2 years old, 3 years old, 4 years old and over and in total.

Average Number of Runs per Horse that Ran

The number of individual different horses that ran on the Flat divided into the total number of Flat runners for each year.

Number of Different Winners

The number of different horses which won a Flat race under Rules in the calendar year.

Number of Races Divided Overnight

The number of different Flat races that were divided under the Rules of Racing because the number of horses declared to run exceeded the safety factor/maximum figure or field size limit of the race concerned or, in exceptional circumstances, to provide a sufficient number of races on the day due to other races on the card being abandoned.

Number of Horses Balloted Out or Eliminated

The number of horses taken out of a Flat race under the Rules of Racing because the number left in at the declaration to run stage exceeded the safety factor/maximum figure or field size limit. These figures are for ALL Flat races, including abandoned races, so will not necessarily equate to the total number of eliminations in table D6, which is only for races that actually took place.

Jump Racing

Number of Different Horses Which Ran

The total number of different horses which ran under Jump Rules in each calendar year.

Average Number of Runs per Horse that Ran

The number of individual different horses that ran under Jump Rules divided into the total number of Jump runners for each calendar year.

Number of Different Winners

The number of different horses that won a Jump race under Rules in the calendar year.

Number of Races Divided Overnight

The number of different Jump races that were divided under the Rules of Racing because the number of horses declared to run exceeded the safety factor/maximum figure or field size limit of the race concerned or, in exceptional circumstances, to provide a sufficient number of races on the day due to other races on the card being abandoned.

Number of Horses Balloted Out or Eliminated

The number of horses taken out of a Jump race under the Rules of Racing because the number left in at the declaration to run stage exceeded the safety factor/maximum figure or field size limit. These figures are for ALL Jump races, including abandoned races, so will not necessarily equate to the total number of eliminations in tables D7, D8 and D9, which are only for races that actually took place.

TABLE 6

Races, Entries, Runners, Eliminations and Prize Money by Type of Race – Flat

An analysis of the number of Entries, Runners and Eliminations by types of Handicaps and types of Weight-for-Age races, together with Prize Money value and percentage of total Flat Prize Money for each type.

TABLE 7

Races, Entries, Runners, Eliminations and Prize Money by Type of Race – Jump

An analysis of the number of Entries, Runners and Eliminations by types of Handicaps and types of Weight-for-Age races, together with Prize Money value and percentage of total Jump Prize Money for each type.

TABLE 8

Races, Entries, Runners, Eliminations and Prize Money by Distance of Race – Hurdle Races and National Hunt Flat Races

An analysis of the number of Entries, Runners and Eliminations by Distance of Race in Handicaps and Weight-for-Age races for Hurdle Races and National Hunt Flat Races. Averages per race, together with Prize Money value and percentage of total Prize Money for Hurdle Races and National Hunt Flat Races for each Distance category are shown.

TABLE 9

Races, Entries, Runners, Eliminations and Prize Money by Distance of Race – Steeple Chases

An analysis of the number of Entries, Runners and Eliminations by Distance of Race in Handicaps and Weight-for-Age races for Steeple Chases. Averages per race, together with Prize Money value and percentage of total Prize Money for Steeple Chases for each Distance category are shown.

TABLE 10

Prize Money by Source for Pattern Races – Flat Racing

An analysis by Course of the source of Prize Money for Flat Pattern Races.

TABLE 11

Prize Money by Source

An analysis of the total Prize Money for the last 5 years, broken down by source.

TABLE 12

Comparison of Flat and Jump Prize Money Pools

An analysis of Flat Prize Money, Jump Prize Money and Total Prize Money by source.

TABLE 13

Total Prize Money by Racecourse

A comparison of the number of Fixtures and Prize Money by source for each Racecourse. A separate table is shown for Flat Racing, Jump Racing and All Racing.

TABLE 14

Sponsored Number Cloth Income

A breakdown by Racecourse (Flat, Jump and Total) of the income derived from the sponsoring of number cloths.

TABLE 15

Prize Money Won Abroad by Horses Trained in Great Britain

Win and Place Prize Money won abroad (i.e. not England, Scotland or Wales) by horses trained in Great Britain at the time of running.

Prize Money Won in Great Britain by Horses Trained outside of Great Britain

Win and Place Prize Money won in Great Britain by horses showing a foreign Trainer in the Official Return sent in by the Clerk of the Scales from the Racecourse. The amount taken will be the Penalty Value shown.

TABLE 16

Appearance Money

The amount paid in Appearance Money payments for the last 5 years, under Schedule (F)11 of the Rules of Racing. A breakdown is shown of money paid in respect of Sunday Racing and that paid for races run on other days of the week.

Owners' Premiums

The amount paid in Owners' Premiums for British Bred Horses in accordance with Rules of Racing. The Owners' Premium Scheme ran from January 1st, 2004 until December 31st, 2006.

Prize Money and Race Statistics

Fixtures

		2006		2007		2008		2009		2010
Flat										
Fixtures Programmed	(a)	842	(c,f,g)	868	(k,l)	945	(s)	926	(u)	909
Fixtures That Took Place	(b,c)	832		844	(m,n,o,p,q)	916	(l)	919	(v)	905
Fixtures Abandoned		10		23		29		5		20
Jump										
Fixtures Programmed		546		544		556		579		591
Fixtures That Took Place	(d,e)	506	(h)	482	(r)	505		505	(w,x)	481
Fixtures Abandoned		41		63		56	(t)	75		120
Mixed										
Fixtures Programmed		3		3		3		2		3
Fixtures That Took Place	(e)	4	(i)	4	(q)	2		2	(x,y)	6
Fixtures Abandoned		0		0		0		0		1
All Racing										
Fixtures Programmed		1,391		1,415		1,504		1,507		1,503
Fixtures That Took Place		1,342		1,330		1,423		1,426		1,392
Fixtures Abandoned		51		86		85		80		141
(Of Which Evening)										
Fixtures Programmed		229	(j)	287		372		331		326
Fixtures That Took Place		226		270	(l)	364	(l)	325	(z)	268
Fixtures Abandoned		3		16	(p)	7		4		2

Notes

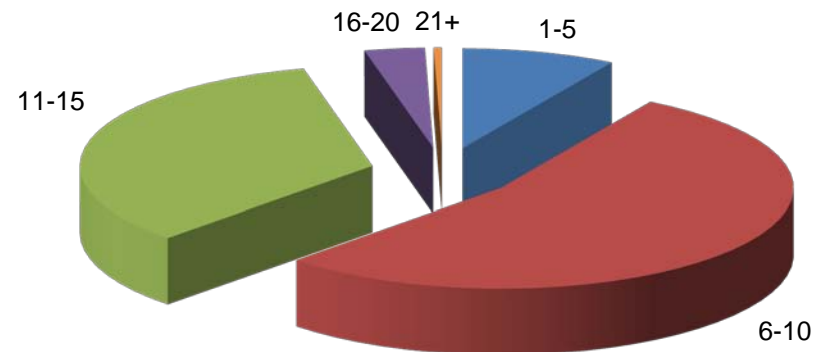
- (a) 297 All Weather Track fixtures
- (b) 2 Additional Flat fixtures
- (c) 2 AWT Flat fixtures cancelled
- (d) 1 additional Jump fixture
- (e) 1 Jump fixture abandoned and replaced by an additional AWT (Mixed) fixture
- (f) 1 Additional AWT Flat fixture
- (g) 316 All Weather Track fixtures programmed, 8 of which were transferred to Turf
- (h) 2 Additional Jump fixtures and 1 Jump fixture cancelled
- (i) 1 Additional Mixed (AWT) fixture
- (j) 1 Additional Evening fixture and 2 Evening fixtures cancelled
- (k) 361 All Weather Track Flat fixtures programmed
- (l) 2 All Weather Track Flat Evening fixtures withdrawn from the fixture list
- (m) 1 All Weather Track Flat fixture transferred to a Turf course
- (n) 1 Turf/AWT Flat fixture converted to AWT only
- (o) 1 AWT Flat fixture converted to Turf only
- (p) 1 abandoned Flat fixture replaced by an additional fixture
- (q) 1 Mixed fixture converted to a Flat fixture
- (r) 5 additional Jump fixtures, one of which was subsequently abandoned and one of which was replaced another abandoned fixture
- (s) 331 All Weather Track Flat fixtures programmed
- (t) 1 Jump fixture abandoned and replaced by Flat AWT fixture
- (u) 302 All Weather Track Flat fixtures programmed
- (v) 17 additional Flat fixtures programmed and 1 Flat fixture cancelled
- (w) 11 additional Jump fixtures programmed
- (x) 1 Jump fixture converted to a Mixed (AWT) fixture
- (y) 3 additional Mixed (AWT) fixtures programmed
- (z) 1 Evening fixture cancelled and 55 Evening fixtures converted to Twilight fixtures

Numbers of Runners in Races

Flat Racing

2010

Runners	Number of Races												% of	
	Jan	Feb	Mar	Apr	May	Jun	Jul	Aug	Sep	Oct	Nov	Dec	Total	All Races
1-5	38	53	20	45	65	54	93	72	36	16	10	37	539	8.5%
6-10	204	172	163	246	402	394	489	471	328	213	132	178	3,392	53.8%
11-15	70	73	75	170	249	276	229	245	288	261	140	63	2,139	33.9%
16-20	0	0	6	14	26	29	24	24	38	45	4	0	210	3.3%
21+	0	0	1	1	2	6	4	0	6	7	2	0	29	0.5%
TOTAL	312	298	265	476	744	759	839	812	696	542	288	278	6,309	100.0%



Numbers of Runners in Races

Jump Racing

2010

Hurdle Races and National Hunt Flat Races

Runners	Number of Races												Total	% of All Races
	Jan	Feb	Mar	Apr	May	Jun	Jul	Aug	Sep	Oct	Nov	Dec		
1-5	3	9	11	14	9	4	6	8	6	9	13	3	95	4.9%
6-10	50	64	123	100	82	60	62	72	38	79	110	26	866	44.6%
11-15	66	93	111	87	86	68	30	22	31	93	101	33	821	42.3%
16-20	8	19	25	17	9	1	4	1	3	12	23	21	143	7.4%
21+	0	1	7	3	2	0	0	0	0	0	1	1	15	0.8%
TOTAL	127	186	277	221	188	133	102	103	78	193	248	84	1,940	100.0%

Steeple Chases

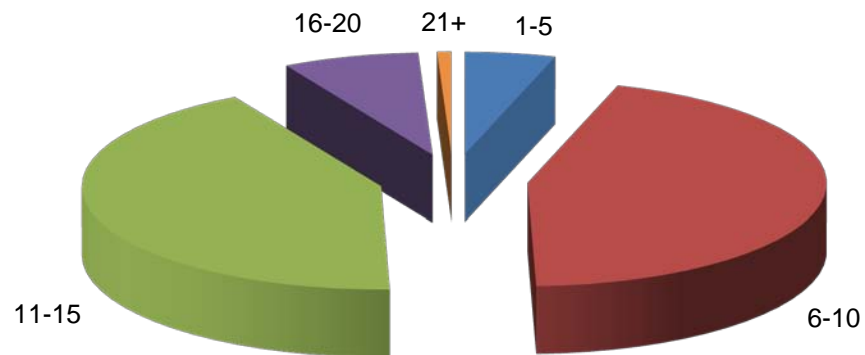
Runners	Number of Races												Total	% of All Races
	Jan	Feb	Mar	Apr	May	Jun	Jul	Aug	Sep	Oct	Nov	Dec		
1-5	25	31	70	49	27	12	9	15	6	22	51	5	322	24.4%
6-10	38	70	104	84	80	49	37	40	32	80	108	23	745	56.6%
11-15	23	23	29	22	31	15	9	6	4	16	15	14	207	15.7%
16-20	0	1	7	9	2	1	2	1	0	2	5	5	35	2.7%
21+	0	0	4	4	0	0	0	0	0	0	0	0	8	0.6%
TOTAL	86	125	214	168	140	77	57	62	42	120	179	47	1,317	100.0%

Numbers of Runners in Races

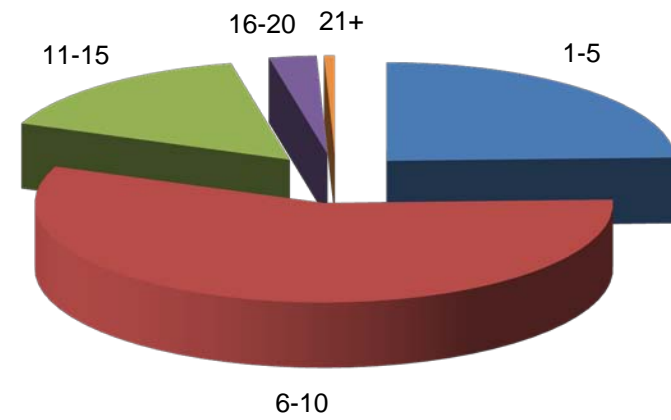
Jump Racing

2010

Hurdle Races and National Hunt Flat Races



Steeple Chases



Analysis of Racing by Size of Field

Flat Races

	2006		2007		2008		2009		2010	
Runners	Number of Races	% of All Races	Number of Races	% of All Races	Number of Races	% of All Races	Number of Races	% of All Races	Number of Races	% of All Races
1-5	295	5.3%	256	4.5%	426 ⁽¹⁾	7.0%	454	7.3%	539	8.5%
6-10	2,367	42.6%	2,536	44.8%	2,964	48.4%	3,205	51.2%	3,392	53.8%
11-15	2,518	45.3%	2,524	44.6%	2,398	39.1%	2,324	37.2%	2,139	33.9%
16-20	348	6.3%	310	5.5%	311	5.1%	245	3.9%	210	3.3%
21+	26	0.5%	33	0.6%	29	0.5%	26	0.4%	29	0.5%
TOTAL	5,554	100.0%	5,659	100.0%	6,128	100.0%	6,254	100.0%	6,309	100.0%

Jump Races

	2006		2007		2008		2009		2010	
Runners	Number of Races	% of All Races	Number of Races	% of All Races	Number of Races	% of All Races	Number of Races	% of All Races	Number of Races	% of All Races
1-5	264	7.8%	317 ⁽¹⁾	9.9%	256	7.6%	341	10.1%	417	12.8%
6-10	1,565	46.3%	1,375	42.7%	1,431	42.5%	1,564	46.4%	1,611	49.5%
11-15	1,217	36.0%	1,189	36.9%	1,317	39.1%	1,199	35.5%	1,028	31.6%
16-20	305	9.0%	312	9.7%	333	9.9%	248	7.4%	178	5.5%
21+	29	0.9%	25	0.8%	29	0.9%	22	0.7%	23	0.7%
TOTAL	3,380	100.0%	3,218	100.0%	3,366	100.0%	3,374	100.0%	3,257	100.0%

Notes

The number of walkovers is shown in brackets.

Analysis of Racing by Size of Field

Hurdle Races and National Hunt Flat Races

	2006		2007		2008		2009		2010	
Runners	Number of Races	% of All Races	Number of Races	% of All Races	Number of Races	% of All Races	Number of Races	% of All Races	Number of Races	% of All Races
1-5	70	3.5%	72	3.8%	61	3.1%	82	4.1%	95	4.9%
6-10	759	37.8%	688	35.9%	657	32.9%	833	41.2%	866	44.6%
11-15	894	44.6%	877	45.8%	981	49.2%	898	44.4%	821	42.3%
16-20	266	13.3%	262	13.7%	272	13.6%	195	9.6%	143	7.4%
21+	17	0.8%	15	0.8%	23	1.2%	15	0.7%	15	0.8%
TOTAL	2,006	100.0%	1,914	100.0%	1,994	100.0%	2,023	100.0%	1,940	100.0%

Steeple Chases

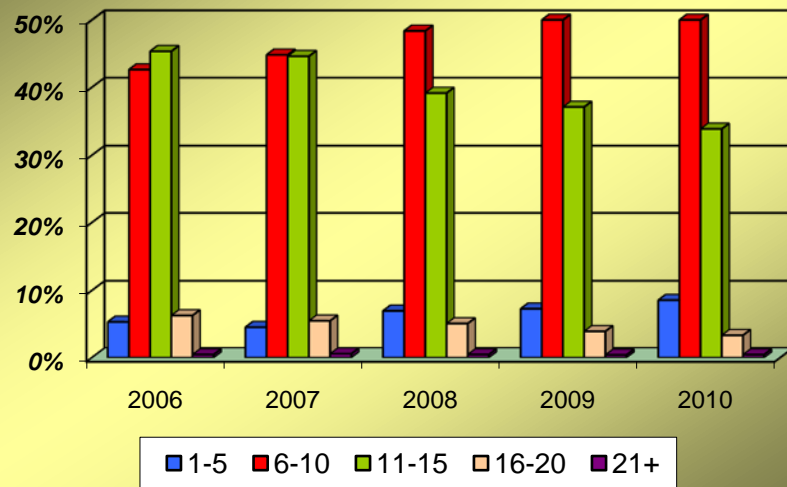
	2006		2007		2008		2009		2010	
Runners	Number of Races	% of All Races	Number of Races	% of All Races	Number of Races	% of All Races	Number of Races	% of All Races	Number of Races	% of All Races
1-5	194	14.1%	245 ⁽¹⁾	18.8%	195	14.2%	259	19.2%	322	24.4%
6-10	806	58.7%	687	52.7%	774	56.4%	731	54.1%	745	56.6%
11-15	323	23.5%	312	23.9%	336	24.5%	301	22.3%	207	15.7%
16-20	39	2.8%	50	3.8%	61	4.4%	53	3.9%	35	2.7%
21+	12	0.9%	10	0.8%	6	0.4%	7	0.5%	8	0.6%
TOTAL	1,374	100.0%	1,304	100.0%	1,372	100.0%	1,351	100.0%	1,317	100.0%

Notes

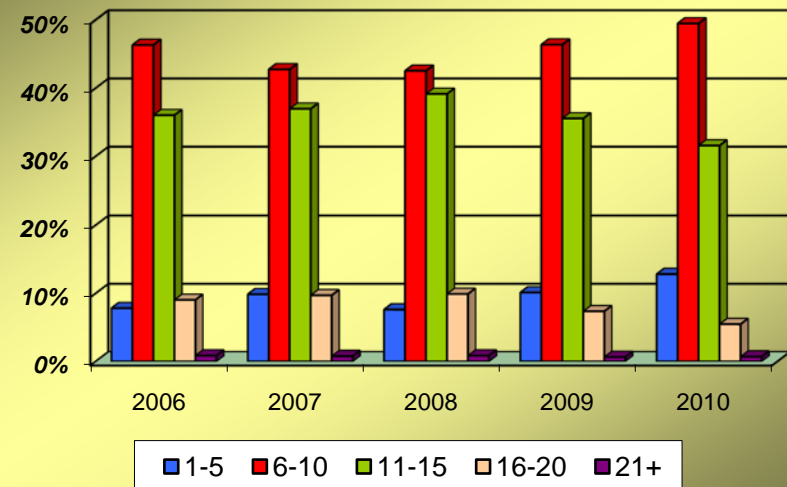
The number of walkovers is shown in brackets.

Analysis of Racing by Size of Field

Flat Races



Jump Races



Analysis of Racing

Number of Different Horses Which Ran, Number of Different Horses Which Won, Number of Races Divided Overnight, and Number of Horses Balloted Out Or Eliminated

Flat Racing

	2006	2007	2008	2009	2010
No. of Different Horses Which Ran as 2-y-o	2,952	3,226	3,313	3,176	3,075
No. of Different Horses Which Ran as 3-y-o	3,388	3,318	3,696	3,604	3,428
No. of Different Horses Which Ran as 4-y-o +	4,614	4,739	4,791	4,998	4,899
No. of Different Horses Which Ran - TOTAL	10,954	11,283	11,800	11,778	11,402
Average Number of Runs per Horse that Ran	5.4	5.3	5.3	5.3	5.3
No. of Different Horses Which Won a Race	3,641	3,782	4,016	4,057	4,075
No. of Races Divided Overnight	177	177	165	215	339
No. of Horses Balloted Out or Eliminated	13,982	12,653	10,876	10,924	7,780

Jump Racing

	2006	2007	2008	2009	2010
No. of Different Horses Which Ran	9,783	9,896	10,050	9,920	9,212
Average Number of Runs per Horse that Ran	3.6	3.4	3.6	3.4	3.4
No. of Different Horses Which Won a Race	2,325	2,267	2,327	2,350	2,303
No. of Races Divided Overnight	76	73	59	72	69
No. of Horses Balloted Out or Eliminated	4,451	4,907	5,292	3,839	2,416

Racing and Prize Money Statistics

Entries, Runners, Eliminations and Prize Money by Type of Race

Flat Races

2010

Type of Race	No. of Races	Entries		Runners		Eliminations		Value	% of Total
		Total	Average	Total	Average	Total	Average	£	Value
HANDICAPS									
Sellers	11	243	22.1	140	12.7	21	1.9	35,770	0.1%
Apprentices	212	4,433	20.9	2,075	9.8	228	1.1	817,250	1.2%
Amateurs	86	1,875	21.8	1,014	11.8	195	2.3	363,400	0.5%
Others	3,673	82,158	22.4	36,541	9.9	6,182	1.7	27,742,263	41.1%
Sub-Total	3,982	88,709	22.3	39,770	10.0	6,626	1.7	28,958,683	42.9%
WEIGHT FOR AGE									
Sellers	218	4,173	19.1	1,924	8.8	80	0.4	671,450	1.0%
Claimers	268	5,040	18.8	2,147	8.0	158	0.6	854,590	1.3%
Maidens	1,324	32,064	24.2	12,701	9.6	581	0.4	6,472,102	9.6%
Novices	45	736	16.4	243	5.4	0	0.0	288,868	0.4%
Apprentices	16	292	18.3	143	8.9	3	0.2	48,050	0.1%
Amateurs	2	42	21.0	24	12.0	30	15.0	5,200	0.0%
Pattern	142	4,874	34.3	1,341	9.4	2	0.0	20,483,170	30.3%
Others	312	8,184	26.2	2,523	8.1	228	0.7	9,790,746	14.5%
Sub-Total	2,327	55,405	23.8	21,046	9.0	1,082	0.5	38,614,176	57.1%
TOTAL	6,309	144,114	22.8	60,816	9.6	7,708	1.2	67,572,859	100.0%

Notes

The above prize money figures have been rounded up or down as necessary. Consequently, the total prize money may not equate to the sum of the individual parts.

Racing and Prize Money Statistics

Entries, Runners, Eliminations and Prize Money by Type of Race

Jump Races 2010

Type of Race	No. of Races	Entries		Runners		Eliminations		Value £	% of Total Value
		Total	Average	Total	Average	Total	Average		
HURDLE RACES									
HANDICAPS									
Novices'	115	3,133	27.2	1,277	11.1	164	1.4	793,350	2.5%
Sellers	20	466	23.3	225	11.3	23	1.2	68,100	0.2%
Conditional Jockeys	96	2,624	27.3	1,114	11.6	154	1.6	485,000	1.5%
Amateurs	27	625	23.1	292	10.8	27	1.0	100,600	0.3%
Others	562	15,092	26.9	6,250	11.1	428	0.8	4,996,874	15.9%
WEIGHT FOR AGE									
Novices'	482	13,644	28.3	4,742	9.8	350	0.7	3,543,058	11.3%
Maidens	171	5,567	32.6	1,956	11.4	253	1.5	703,150	2.2%
Sellers	63	1,547	24.6	591	9.4	3	0.0	191,350	0.6%
Conditional Jockeys	21	528	25.1	198	9.4	0	0.0	75,400	0.2%
Amateurs	3	91	30.3	30	10.0	15	5.0	12,000	0.0%
Others	82	1,433	17.5	721	8.8	8	0.1	2,344,982	7.5%
National Hunt Flat Races	279	8,260	29.6	3,120	11.2	350	1.3	989,550	3.2%
Sub-Total	1,940	53,442	27.5	20,667	10.7	1,780	0.9	14,370,497	45.8%
STEEPLE CHASES									
HANDICAPS									
Novices'	144	2,631	18.3	1,146	8.0	40	0.3	1,097,244	3.5%
Sellers	2	42	21.0	20	10.0	4	2.0	7,500	0.0%
Conditional Jockeys	31	590	19.0	269	8.7	11	0.4	152,983	0.5%
Amateurs	10	249	24.9	110	11.0	23	2.3	128,429	0.4%
Hunters	2	24	12.0	12	6.0	0	0.0	16,000	0.1%
Others	665	13,663	20.5	5,912	8.9	250	0.4	9,141,018	29.1%
WEIGHT FOR AGE									
Novices'	318	5,048	15.9	1,783	5.6	5	0.0	3,244,670	10.3%
Maidens	6	108	18.0	49	8.2	0	0.0	29,500	0.1%
Amateurs	3	109	36.3	38	12.7	0	0.0	99,000	0.3%
Hunters	106	2,330	22.0	996	9.4	72	0.7	450,962	1.4%
Others	30	454	15.1	207	6.9	0	0.0	2,652,006	8.4%
Sub-Total	1,317	25,248	19.2	10,542	8.0	405	0.3	17,019,312	54.2%
GRAND TOTAL	3,257	78,690	24.2	31,209	9.6	2,185	0.7	31,389,808	100.0%

Notes

The above prize money figures have been rounded up or down as necessary. Consequently, the total prize money may not equate to the sum of the individual parts.

Racing and Prize Money Statistics

Entries, Runners, Eliminations and Prize Money by Distance of Race

Hurdle Races and National Hunt Flat Races

2010

Distance of Race	No. of Races	Entries		Runners		Eliminations		Value £	% of Total Value
		Total	Average	Total	Average	Total	Average		
HANDICAPS									
2 Miles	288	7,040	24.4	3,078	10.7	180	0.6	2,519,074	17.5%
2 ¼ Miles	75	1,930	25.7	787	10.5	36	0.5	416,250	2.9%
2 ½ Miles	213	6,383	30.0	2,533	11.9	259	1.2	1,697,300	11.8%
2 ¾ Miles	84	2,369	28.2	939	11.2	122	1.5	541,100	3.8%
3 Miles and over	160	4,218	26.4	1,821	11.4	199	1.2	1,270,200	8.8%
Sub-Total	820	21,940	26.8	9,158	11.2	796	1.0	6,443,924	44.8%
WEIGHT FOR AGE									
2 Miles	690	19,213	27.8	7,304	10.6	684	1.0	4,359,996	30.3%
2 ¼ Miles	90	2,527	28.1	913	10.1	84	0.9	405,250	2.8%
2 ½ Miles	210	6,456	30.7	2,081	9.9	136	0.6	1,686,185	11.7%
2 ¾ Miles	56	1,618	28.9	563	10.1	60	1.1	259,512	1.8%
3 Miles and over	74	1,688	22.8	648	8.8	20	0.3	1,215,630	8.5%
Sub-Total	1,120	31,502	28.1	11,509	10.3	984	0.9	7,926,573	55.2%
TOTAL	1,940	53,442	27.5	20,667	10.7	1,780	0.9	14,370,497	100.0%

Notes

The above prize money figures have been rounded up or down as necessary. Consequently, the total prize money may not equate to the sum of the individual parts.

Racing and Prize Money Statistics

Entries, Runners, Eliminations and Prize Money by Distance of Race

Steeple Chases

2010

Distance of Race	No. of Races	Entries		Runners		Eliminations		Value £	% of Total Value
		Total	Average	Total	Average	Total	Average		
HANDICAPS									
2 Miles	167	2,619	15.7	1,273	7.6	19	0.1	1,558,205	9.2%
2 ¼ Miles	60	1,022	17.0	502	8.4	2	0.0	455,417	2.7%
2 ½ Miles	220	4,643	21.1	1,885	8.6	76	0.3	2,442,153	14.3%
2 ¾ Miles	105	2,154	20.5	947	9.0	50	0.5	1,087,283	6.4%
3 Miles and over	302	6,761	22.4	2,862	9.5	181	0.6	5,000,116	29.4%
Sub-Total	854	17,199	20.1	7,469	8.7	328	0.4	10,543,174	61.9%
WEIGHT FOR AGE									
2 Miles	87	1,217	14.0	494	5.7	0	0.0	1,566,459	9.2%
2 ¼ Miles	27	420	15.6	172	6.4	0	0.0	269,012	1.6%
2 ½ Miles	128	2,293	17.9	831	6.5	10	0.1	1,558,111	9.2%
2 ¾ Miles	59	1,182	20.0	406	6.9	30	0.5	539,377	3.2%
3 Miles and over	162	2,937	18.1	1,170	7.2	37	0.2	2,543,178	14.9%
Sub-Total	463	8,049	17.4	3,073	6.6	77	0.2	6,476,137	38.1%
TOTAL	1,317	25,248	19.2	10,542	8.0	405	0.3	17,019,312	100.0%

Notes

The above prize money figures have been rounded up or down as necessary. Consequently, the total prize money may not equate to the sum of the individual parts.

Prize Money by Source for Pattern Races

Flat Racing

2010

Racecourse	No. of Races	Prize Money Contributions		
		Racecourse Executive plus Sponsors £	Owners' Contribution £	Total Prize Fund £
ASCOT	29	3,759,470	1,625,775	5,385,245
AYR	1	54,300	5,700	60,000
CHESTER	4	256,825	23,175	280,000
DONCASTER	8	1,034,275	352,425	1,386,700
EPSOM DOWNS	5	1,319,975	760,625	2,080,600
GOODWOOD	16	1,347,185	279,475	1,626,660
HAYDOCK PARK	5	478,350	124,700	603,050
KEMPTON PARK	2	90,460	9,000	99,460
LINGFIELD PARK	3	212,500	17,500	230,000
NEWBURY	12	748,913	129,710	878,623
NEWCASTLE	1	60,710	4,290	65,000
NEWMARKET	30	2,798,390	1,257,215	4,055,605
SALISBURY	1	56,100	3,900	60,000
SANDOWN PARK	8	804,725	181,025	985,750
WINDSOR	1	60,043	4,080	64,123
YORK	16	1,896,040	726,315	2,622,355
TOTAL	142	14,978,260	5,504,910	20,483,170

NOTES

The above prize money figures have been rounded up or down as necessary. Consequently, the total prize money may not equate to the sum of the individual parts.

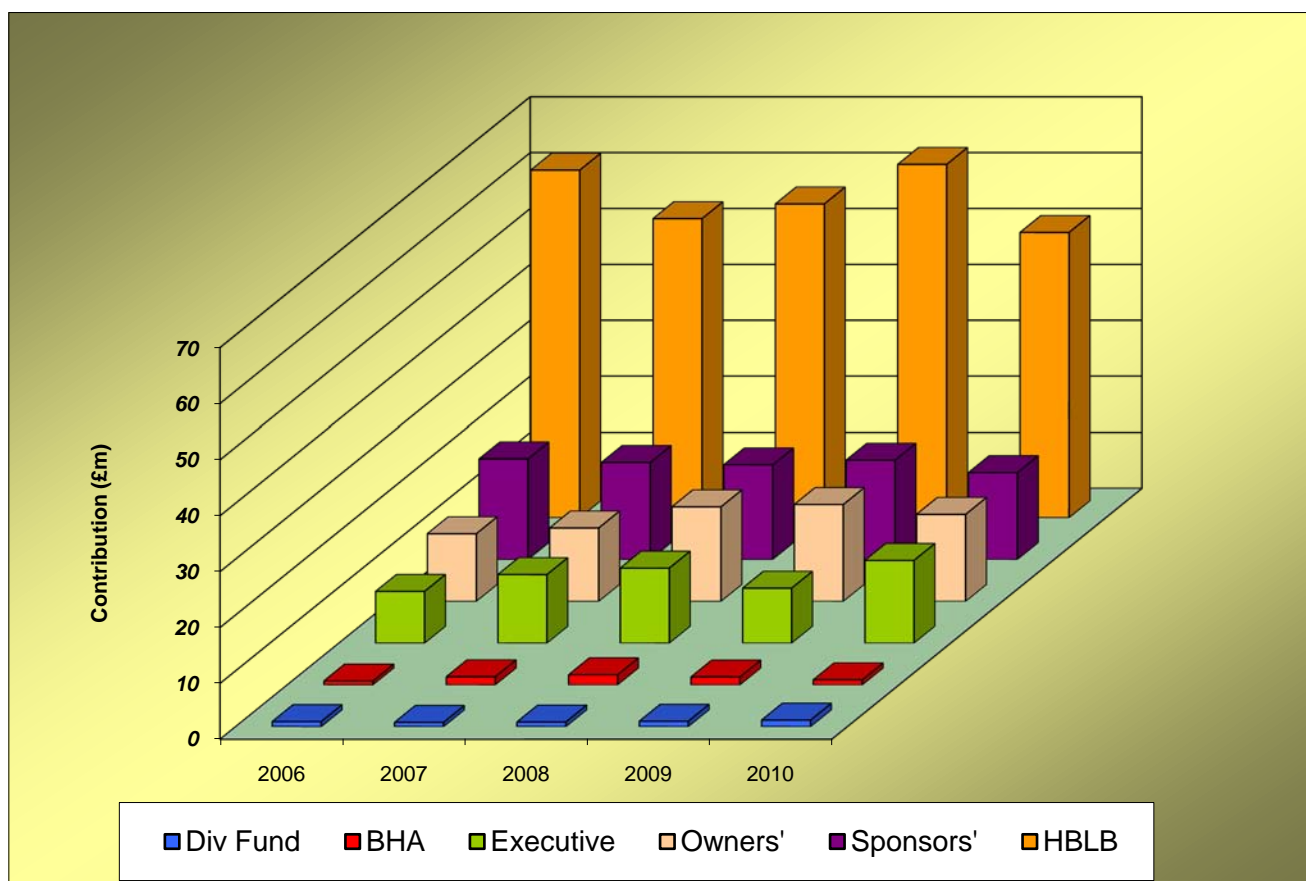
Breakdown of Prize Money by Source

	£ Million						
	Executive	Sponsors'	HBLB	Owners'	BHA	Div Fund	TOTAL
2006	9.26	18.00	62.10	12.10	0.71	0.92	103.10
2007	12.27	17.37	53.42	13.13	1.46	0.78	98.43
2008	13.42	16.95	56.06	16.91	1.81	0.85	106.00
2009	9.83	17.78	63.14	17.32	1.41	0.97	110.46
2010	14.80	15.55	50.96	15.57	0.90	1.18	98.96

Notes

The above figures have been rounded to two decimal places.

Consequently, the TOTAL column will not always equate to the sum of the individual parts.

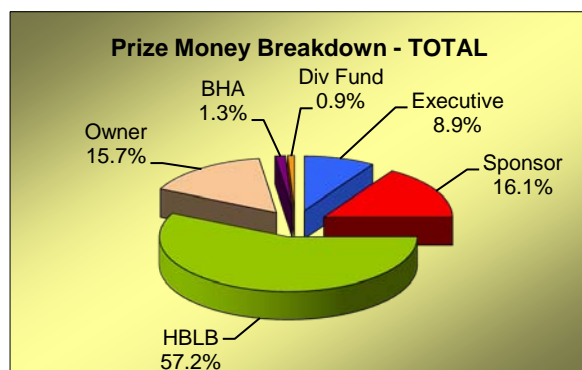
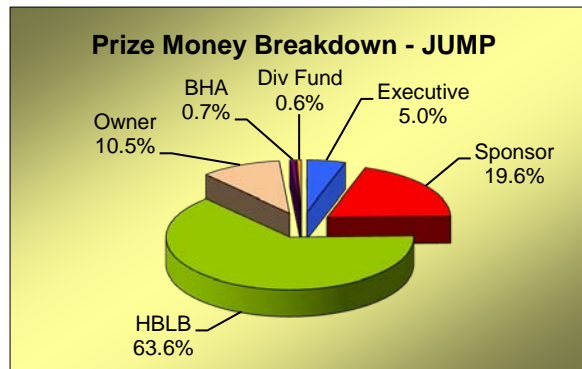
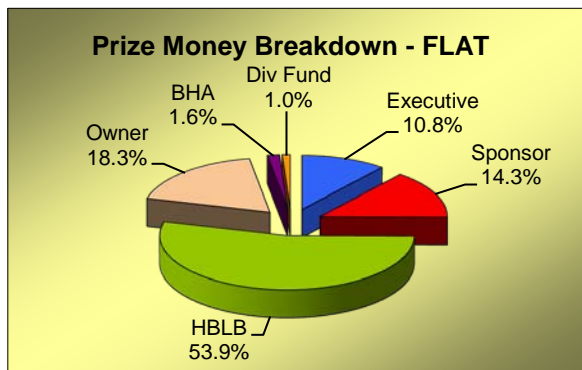


Comparison of Flat/Jump Prize Money Pools

Prize Money Statistics

2009

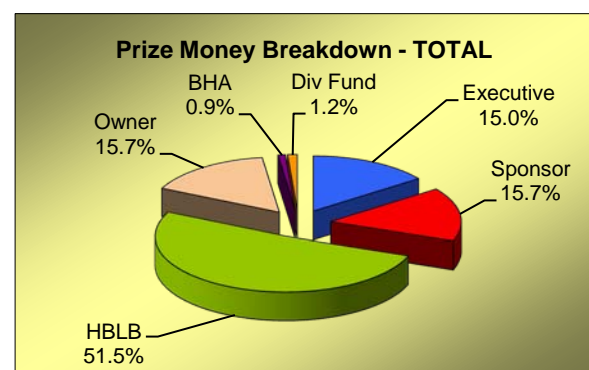
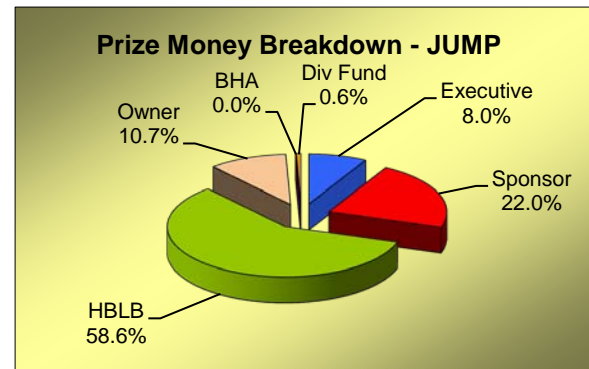
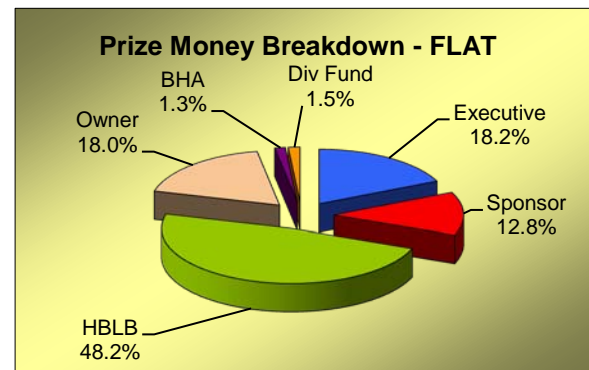
	Flat	Jump	TOTAL
Executive	7,974,056	1,859,364	9,833,419
Sponsor	10,542,718	7,235,181	17,777,899
HBLB	39,644,428	23,491,777	63,136,205
Owner	13,453,611	3,871,002	17,324,613
BHA	1,143,000	271,500	1,414,500
Div Fund	751,950	222,450	974,400
TOTAL	68,722,658	37,277,856	110,461,037



Prize Money Statistics

2010

	Flat	Jump	TOTAL
Executive	12,287,734	2,512,069	14,799,803
Sponsor	8,634,787	6,918,934	15,553,721
HBLB	32,577,896	18,380,679	50,958,575
Owner	12,195,691	3,373,477	15,569,168
BHA	892,000	10,000	902,000
Div Fund	984,750	194,650	1,179,400
TOTAL	67,572,859	31,389,808	98,962,667



Notes

The above figures have been rounded up or down as necessary. Consequently, the totals will not always equate to the sum of the individual parts.

Total Prize Money by Racecourse Flat Racing - 2010

	Fixtures Ran (Aban)	Exec+Spons	HBLB	Owners	BHA	Div Fund	TOTAL
ASCOT	17	3,643,929	2,070,022	1,956,512	62,500	7,000	7,739,963
AYR	16	363,788	562,684	145,178	10,000	16,000	1,097,650
BATH	22	174,885	422,292	65,603	8,000	9,550	680,330
BEVERLEY	20	269,924	449,960	60,507	26,500	23,100	829,991
BRIGHTON	23	100,063	458,600	55,011	0	5,600	619,274
CARLISLE	10	86,586	239,500	39,025	0	7,500	372,611
CATTERICK BRIDGE	18	60,459	378,980	40,620	4,000	21,200	505,259
CHEPSTOW	11 (4)	86,379	200,210	32,961	1,000	7,000	327,550
CHESTER	13	615,752	772,860	90,186	41,000	12,750	1,532,548
DONCASTER	24	1,266,918	1,452,968	962,234	62,000	20,000	3,764,120
EPSOM DOWNS	15	1,297,708	906,450	853,490	23,000	0	3,080,648
FFOS LAS	11	111,863	260,920	33,043	0	0	405,826
FOLKESTONE	13	52,493	285,030	34,006	0	2,000	373,529
GOODWOOD	22 (1)	1,320,990	1,676,354	513,926	36,000	4,000	3,551,270
HAMILTON PARK	18	253,818	410,420	56,202	20,000	0	740,440
HAYDOCK PARK	23	793,088	1,036,235	333,022	37,000	22,600	2,221,945
KEMPTON PARK	85 (3)	435,093	2,380,340	295,759	47,000	137,350	3,295,542
LEICESTER	20	228,153	427,232	83,792	33,000	20,000	792,177
LINGFIELD PARK	86 (6)	624,629	2,276,695	254,077	43,000	117,950	3,316,351
MUSSELBURGH	18	353,307	428,622	83,548	16,500	6,000	887,977
NEWBURY	19	664,317	1,229,302	406,755	62,000	67,500	2,429,874
NEWCASTLE	18 (2)	255,605	554,090	132,050	3,000	26,750	971,495
NEWMARKET	38	3,063,140	3,220,213	2,851,254	123,500	33,000	9,291,107
NOTTINGHAM	19	144,512	421,870	93,468	29,000	42,000	730,850
PONTEFRAC	16	229,851	562,870	50,584	29,500	16,500	889,305
REDCAR	19	130,279	416,670	277,197	6,000	22,900	853,046
RIPON	15	273,884	436,200	91,647	15,000	12,000	828,731
SALISBURY	15	237,608	518,532	74,984	30,500	29,000	890,624
SANDOWN PARK	19	698,148	1,163,322	315,726	34,000	9,000	2,220,196
SOUTHWELL	60 (1)	-38,348	1,465,685	100,878	2,000	31,200	1,561,415
THIRSK	14	187,104	397,260	76,376	5,000	56,500	722,240
WARWICK	11 (1)	83,325	292,540	56,516	9,000	11,500	452,881
WINDSOR	26	278,640	639,710	104,983	27,000	23,000	1,073,333
WOLVERHAMPTON	96 (3)	100,865	2,235,895	231,037	3,000	143,800	2,714,597
YARMOUTH	24	155,888	451,082	77,380	6,000	20,500	710,850
YORK	17	2,317,879	1,476,282	1,266,154	37,000	0	5,097,315
TOTAL	911 (21)	20,922,521	32,577,896	12,195,691	892,000	984,750	67,572,859

Notes

The above figures have been rounded up or down as necessary. Consequently, the totals will not always equate to the sum of the individual parts. Mixed meetings are included with the Flat figures.

Total Prize Money by Racecourse Jump Racing - 2010

	Fixtures Ran	(Aban)	Exec+Spons	HBLB	Owners	BHA	Div Fund	TOTAL
AINTREE	9		1,641,959	993,232	476,088	0	0	3,111,279
ASCOT	6	(2)	455,466	547,113	92,058	0	0	1,094,637
AYR	6	(6)	261,392	316,320	100,723	0	0	678,435
BANGOR-ON-DEE	16	(2)	165,720	502,553	34,363	0	9,650	712,286
CARLISLE	8	(4)	103,007	229,928	33,375	0	3,000	369,310
CARTMEL	7		65,224	151,740	24,036	0	0	241,000
CATTERICK BRIDGE	6	(4)	48,683	119,350	15,867	0	0	183,900
CHELTENHAM	17		3,074,524	1,771,222	801,844	0	4,000	5,651,590
CHEPSTOW	11	(4)	43,648	362,980	40,074	0	2,500	449,202
DONCASTER	5	(4)	108,854	327,540	77,904	0	0	514,298
EXETER	14	(2)	141,608	466,932	67,872	0	7,500	683,912
FAKENHAM	8	(2)	95,140	232,760	0	0	0	327,900
FFOS LAS	14	(3)	113,229	440,500	55,143	0	9,000	617,872
FOLKESTONE	5	(4)	17,545	142,335	17,520	0	0	177,400
FONTWELL PARK	20	(4)	81,021	568,828	71,004	0	0	720,853
HAYDOCK PARK	7	(2)	547,975	525,141	110,343	10,000	0	1,193,459
HEREFORD	10	(4)	7,059	258,760	40,456	0	4,000	310,275
HEXHAM	13	(2)	37,108	390,210	44,805	0	6,500	478,623
HUNTINGDON	16	(3)	42,049	451,542	63,384	0	9,500	566,475
KELSO	11	(3)	87,007	369,518	36,866	0	3,300	496,691
KEMPTON PARK	11	(3)	27,362	663,580	76,565	0	7,000	774,507
LEICESTER	5	(7)	4,073	162,005	14,989	0	0	181,067
LINGFIELD PARK	4	(1)	-4,853	146,393	13,760	0	2,200	157,500
LUDLOW	11	(5)	75,327	363,740	37,825	0	0	476,892
MARKET RASEN	19	(3)	156,169	607,600	76,853	0	6,000	846,622
MUSSELBURGH	5	(5)	59,445	181,040	20,515	0	4,000	265,000
NEWBURY	11	(1)	542,851	788,493	157,932	0	0	1,489,276
NEWCASTLE	6	(6)	-30,401	219,850	19,243	0	0	208,692
NEWTON ABBOT	17	(1)	170,421	477,590	5,180	0	4,700	657,891
PERTH	14		135,479	430,520	38,938	0	4,000	608,937
PLUMPTON	16	(1)	43,031	472,548	34,280	0	4,000	553,859
SANDOWN PARK	5	(4)	305,406	417,628	105,640	0	0	828,674
SEDFIELD	15	(4)	8,500	390,150	46,687	0	0	445,337
SOUTHWELL	16	(2)	38,995	465,060	49,345	0	8,800	562,200
STRATFORD-ON-AVON	18		203,105	528,585	66,867	0	13,000	811,557
TAUNTON	10	(5)	92,660	314,675	33,175	0	15,000	455,510
TOWCESTER	16	(4)	39,993	411,100	48,407	0	6,000	505,500
UTTOXETER	24	(1)	76,766	675,720	112,857	0	23,000	888,343
WARWICK	8	(2)	13,281	274,368	35,811	0	0	323,460
WETHERBY	12	(5)	152,764	385,516	50,464	0	1,500	590,244
WINCANTON	12	(5)	135,977	425,640	57,228	0	1,500	620,345
WORCESTER	17		46,436	410,373	67,191	0	35,000	559,000
TOTAL	481	(120)	9,431,003	18,380,679	3,373,477	10,000	194,650	31,389,808

Notes

The above figures have been rounded up or down as necessary. Consequently, the totals will not always equate to the sum of the individual parts.

Total Prize Money by Racecourse All Racing - 2010

	Fixtures Ran	(Aban)	Exec+Spons	HBLB	Owners	BHA	Div Fund	TOTAL
AINTREE	9		1,641,959	993,232	476,088	0	0	3,111,279
ASCOT	23	(2)	4,099,395	2,617,135	2,048,570	62,500	7,000	8,834,600
AYR	22	(6)	625,180	879,004	245,901	10,000	16,000	1,776,085
BANGOR-ON-DEE	16	(2)	165,720	502,553	34,363	0	9,650	712,286
BATH	22		174,885	422,292	65,603	8,000	9,550	680,330
BEVERLEY	20		269,924	449,960	60,507	26,500	23,100	829,991
BRIGHTON	23		100,063	458,600	55,011	0	5,600	619,274
CARLISLE	18	(4)	189,593	469,428	72,400	0	10,500	741,921
CARTMEL	7		65,224	151,740	24,036	0	0	241,000
CATTERICK BRIDGE	24	(4)	109,142	498,330	56,487	4,000	21,200	689,159
CHELTENHAM	17		3,074,524	1,771,222	801,844	0	4,000	5,651,590
CHEPSTOW	22	(8)	130,027	563,190	73,035	1,000	9,500	776,752
CHESTER	13		615,752	772,860	90,186	41,000	12,750	1,532,548
DONCASTER	29	(4)	1,375,772	1,780,508	1,040,138	62,000	20,000	4,278,418
EPSOM DOWNS	15		1,297,708	906,450	853,490	23,000	0	3,080,648
EXETER	14	(2)	141,608	466,932	67,872	0	7,500	683,912
FAKENHAM	8	(2)	95,140	232,760	0	0	0	327,900
FFOS LAS	25	(3)	225,092	701,420	88,186	0	9,000	1,023,698
FOLKESTONE	18	(4)	70,038	427,365	51,526	0	2,000	550,929
FONTWELL PARK	20	(4)	81,021	568,828	71,004	0	0	720,853
GOODWOOD	22	(1)	1,320,990	1,676,354	513,926	36,000	4,000	3,551,270
HAMILTON PARK	18		253,818	410,420	56,202	20,000	0	740,440
HAYDOCK PARK	30	(2)	1,341,063	1,561,376	443,365	47,000	22,600	3,415,404
HEREFORD	10	(4)	7,059	258,760	40,456	0	4,000	310,275
HEXHAM	13	(2)	37,108	390,210	44,805	0	6,500	478,623
HUNTINGDON	16	(3)	42,049	451,542	63,384	0	9,500	566,475
KELSO	11	(3)	87,007	369,518	36,866	0	3,300	496,691
KEMPTON PARK	96	(6)	462,455	3,043,920	372,324	47,000	144,350	4,070,049
LEICESTER	25	(7)	232,227	589,237	98,781	33,000	20,000	973,245
LINGFIELD PARK	90	(7)	619,776	2,423,088	267,837	43,000	120,150	3,473,851
LUDLOW	11	(5)	75,327	363,740	37,825	0	0	476,892
MARKET RASEN	19	(3)	156,169	607,600	76,853	0	6,000	846,622
MUSSELBURGH	23	(5)	412,752	609,662	104,063	16,500	10,000	1,152,977
NEWBURY	30	(1)	1,207,167	2,017,795	564,687	62,000	67,500	3,919,149
NEWCASTLE	24	(8)	225,204	773,940	151,293	3,000	26,750	1,180,187
NEWMARKET	38		3,063,140	3,220,213	2,851,254	123,500	33,000	9,291,107
NEWTON ABBOT	17	(1)	170,421	477,590	5,180	0	4,700	657,891
NOTTINGHAM	19		144,512	421,870	93,468	29,000	42,000	730,850
PERTH	14		135,479	430,520	38,938	0	4,000	608,937
PLUMPTON	16	(1)	43,031	472,548	34,280	0	4,000	553,859
PONTEFRACT	16		229,851	562,870	50,584	29,500	16,500	889,305
REDCAR	19		130,279	416,670	277,197	6,000	22,900	853,046
RIPON	15		273,884	436,200	91,647	15,000	12,000	828,731
SALISBURY	15		237,608	518,532	74,984	30,500	29,000	890,624
SANDOWN PARK	24	(4)	1,003,554	1,580,950	421,366	34,000	9,000	3,048,870
SEDGEFIELD	15	(4)	8,500	390,150	46,687	0	0	445,337
SOUTHWELL	76	(3)	647	1,930,745	150,223	2,000	40,000	2,123,615
STRATFORD-ON-AVON	18		203,105	528,585	66,867	0	13,000	811,557
TAUNTON	10	(5)	92,660	314,675	33,175	0	15,000	455,510
THIRSK	14		187,104	397,260	76,376	5,000	56,500	722,240
TOWCESTER	16	(4)	39,993	411,100	48,407	0	6,000	505,500
UTTOXETER	24	(1)	76,766	675,720	112,857	0	23,000	888,343
WARWICK	19	(3)	96,605	566,908	92,327	9,000	11,500	776,340
WETHERBY	12	(5)	152,764	385,516	50,464	0	1,500	590,244
WINCANTON	12	(5)	135,977	425,640	57,228	0	1,500	620,345
WINDSOR	26		278,640	639,710	104,983	27,000	23,000	1,073,333
WOLVERHAMPTON	96	(3)	100,865	2,235,895	231,037	3,000	143,800	2,714,597
WORCESTER	17		46,436	410,373	67,191	0	35,000	559,000
YARMOUTH	24		155,888	451,082	77,380	6,000	20,500	710,850
YORK	17		2,317,879	1,476,282	1,266,154	37,000	0	5,097,315
TOTAL	1,392	(141)	30,353,524	50,958,575	15,569,168	902,000	1,179,400	98,962,667

Notes

The above figures have been rounded up or down as necessary. Consequently, the totals will not always equate to the sum of the individual parts. Mixed meetings are included with the Flat figures.

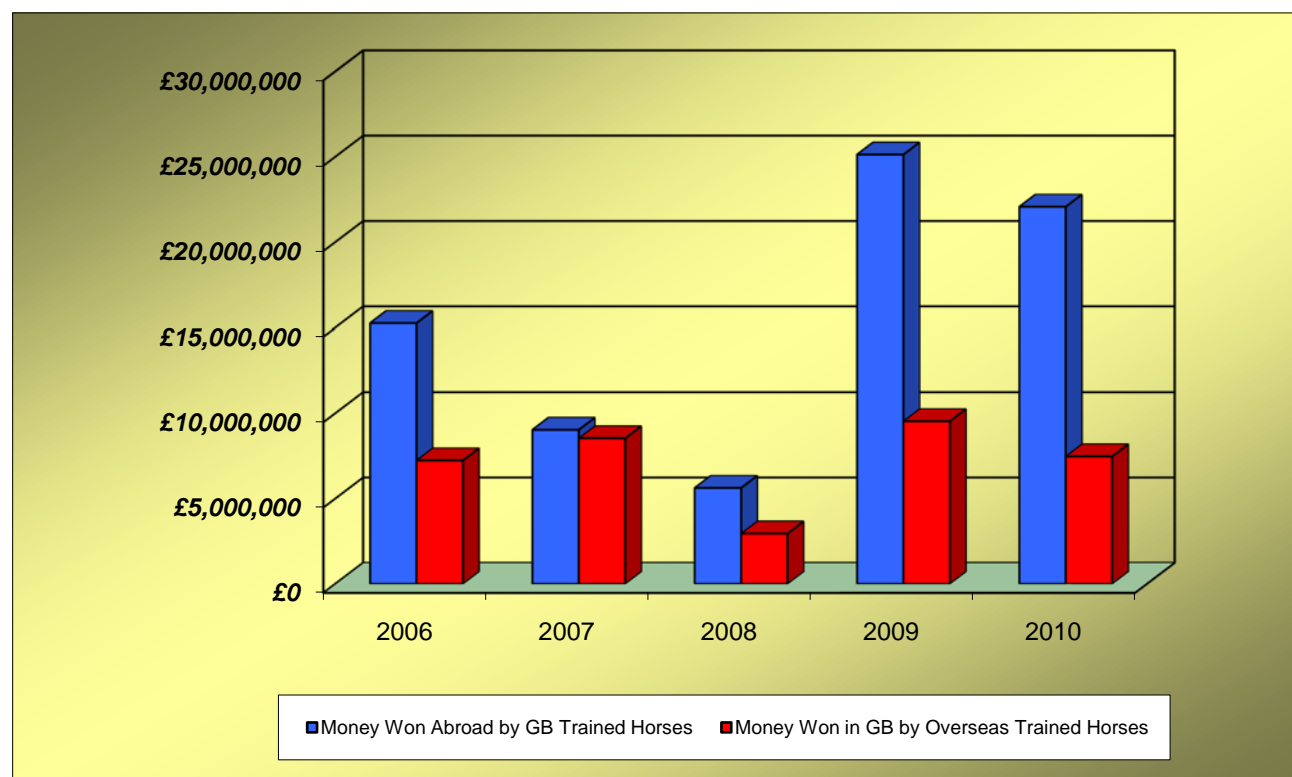
Sponsored Number Cloth Income

2010

	FLAT	JUMP	TOTAL
AINTREE		11,000	11,000
ASCOT	33,000	7,000	40,000
AYR	3,250	1,500	4,750
BANGOR-ON-DEE		0	0
BATH	0		0
BEVERLEY	1,500		1,500
BRIGHTON	250		250
CARLISLE	0	500	500
CARTMEL		0	0
CATTERICK BRIDGE	0	0	0
CHELTENHAM		22,000	22,000
CHEPSTOW	0	1,000	1,000
CHESTER	9,500		9,500
DONCASTER	9,750	750	10,500
EPSOM DOWNS	8,000		8,000
EXETER		250	250
FAKENHAM		0	0
FFOS LAS	0	0	0
FOLKESTONE	0	0	0
FONTWELL PARK		500	500
GOODWOOD	15,000		20,000
HAMILTON PARK	750		750
HAYDOCK PARK	7,000	5,000	12,000
HEREFORD		0	0
HEXHAM		0	0
HUNTINGDON		1,000	1,000
KELSO		0	0
KEMPTON PARK	6,500	4,500	11,000
LEICESTER	0	0	0
LINGFIELD PARK	4,500	0	4,500
LUDLOW		0	0
MARKET RASEN		3,000	3,000
MUSSELBURGH	2,250	0	2,250
NEWBURY	14,500	7,000	21,500
NEWCASTLE	2,500	0	2,500
NEWMARKET	31,500		31,500
NEWTON ABBOT		0	0
NOTTINGHAM	0		0
PERTH		0	0
PLUMPTON		0	0
PONTEFRAC T	0		0
REDCAR	500		500
RIPON	1,750		1,750
SALISBURY	1,000		1,000
SANDOWN PARK	5,750	6,250	12,000
SEDFIELD		0	0
SOUTHWELL	0	0	0
STRATFORD-ON-AVON		0	0
TAUNTON		0	0
THIRSK	0		0
TOWCESTER		0	0
UTTOXETER		1,500	1,500
WARWICK	0	1,000	1,000
WETHERBY		3,000	3,000
WINCANTON		1,000	1,000
WINDSOR	0		0
WOLVERHAMPTON	1,000		1,000
WORCESTER		500	500
YARMOUTH	0		0
YORK	22,500		22,500
TOTAL	182,250	78,250	265,500

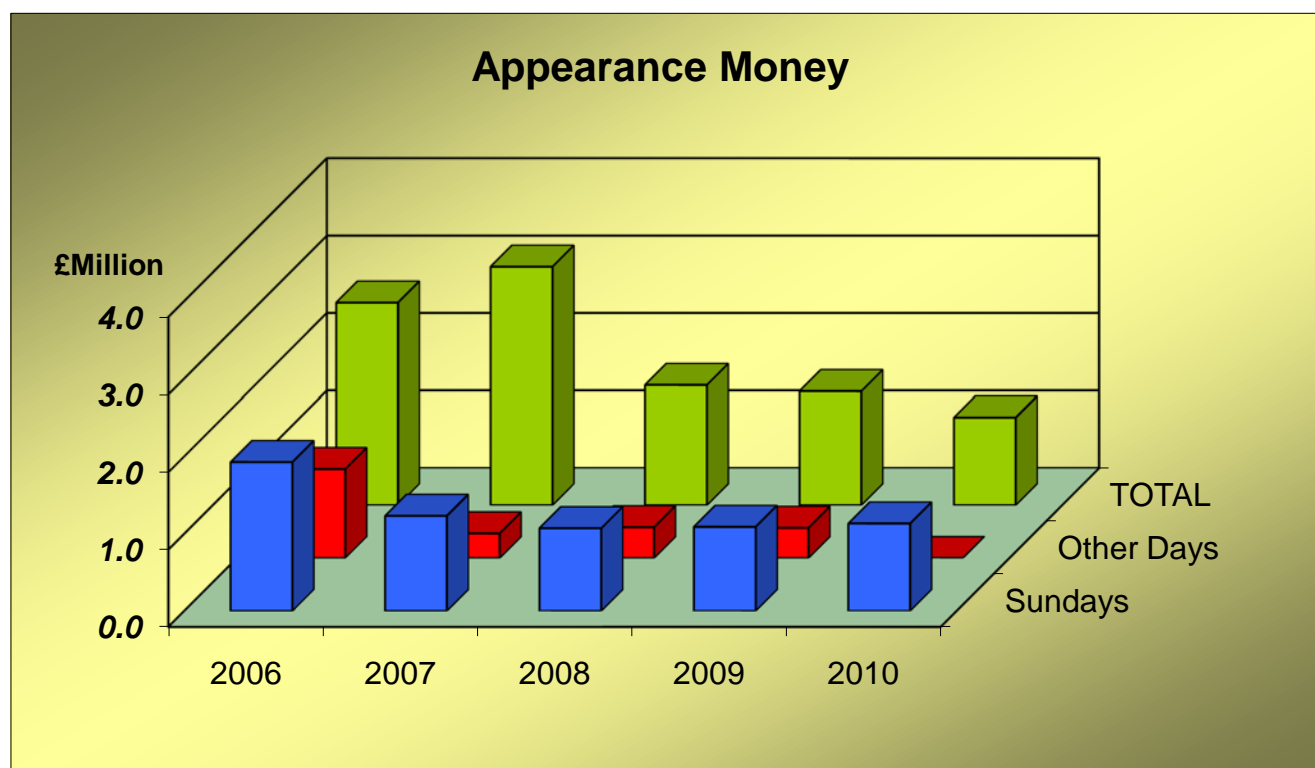
Prize Money Entering and Leaving Great Britain

	2006	2007	2008	2009	2010
Prize Money WON ABROAD					
by horses trained in Great Britain	15,247,516	9,028,843	5,621,876	25,124,821	22,067,795
Prize Money WON IN GREAT BRITAIN					
by horses trained outside of Great Britain	7,231,583	8,533,123	2,947,770	9,531,883	7,469,596



Appearance Money and Owners' Premium Payments

	2006	2007	2008	2009	2010
	£	£	£	£	£
APPEARANCE MONEY					
Sundays	1,925,050	1,229,840	1,069,450	1,087,350	1,131,165
Other Days	1,150,950	318,800	398,500	391,100	0
TOTAL	2,611,840	3,076,000	1,548,640	1,467,950	1,131,165
OWNERS' PREMIUMS					
	446,860	707,854	N/A	N/A	N/A



SECTION E

RACECOURSES

TABLE 1

Racecourse Activities

The number of Fixtures that took place and that were Abandoned, the number of Races, Entries and Runners, and the total Public Attendance for each Racecourse. Average Runners per Race and Average Daily Attendance is also shown. Mixed Fixtures are counted as Flat Fixtures for the purposes of these tables. A separate table is shown for Flat Racing, Jump Racing and All Racing.

TABLE 2

Monthly Attendance Figures

The total Public Attendances at Racecourses each month by Flat, Jump and Total for the last 5 years. Mixed Meeting Attendances are included with the Flat figures.

TABLE 3

Daily Spread of Public Attendances

An analysis of Public Attendances at Racecourses, Flat and Jump shown separately, on each day of the week and Bank Holidays during the year, for the last 5 years. Mixed Meeting Attendances are included with the Flat figures.

Racecourse Activities

2010

Flat

Racecourse	Fixtures	Abandoned	Races	Entries	Runners	Ave Runners	Attendance	Ave Attendance
ASCOT	17		107	3,279	1,284	12.0	485,327	28,549
AYR	16		119	2,770	1,170	9.8	63,193	3,950
BATH	22		151	3,241	1,351	8.9	56,080	2,549
BEVERLEY	20		139	3,053	1,363	9.8	87,372	4,369
BRIGHTON	23		149	2,840	1,252	8.4	34,739	1,510
CARLISLE	10		69	1,646	667	9.7	43,342	4,334
CATTERICK BRIDGE	18		127	2,698	1,237	9.7	31,571	1,754
CHEPSTOW	11	4	70	1,603	717	10.2	27,802	2,527
CHESTER	13		89	1,961	787	8.8	271,563	20,889
DONCASTER	24		160	4,875	1,793	11.2	182,919	7,622
EPSOM DOWNS	15		94	2,193	768	8.2	129,809	8,654
FFOS LAS	11		64	1,170	444	6.9	26,291	2,390
FOLKESTONE	13		83	1,680	635	7.7	22,535	1,733
GOODWOOD	22	1	152	3,634	1,496	9.8	213,545	9,707
HAMILTON PARK	18		118	2,336	954	8.1	48,308	2,684
HAYDOCK PARK	23		147	4,110	1,418	9.6	157,021	6,827
KEMPTON PARK	85	3	622	12,483	6,175	9.9	90,902	1,069
LEICESTER	20		136	3,751	1,279	9.4	29,136	1,457
LINGFIELD PARK	86	6	606	11,604	5,557	9.2	115,686	1,345
MUSSELBURGH	18		122	2,289	1,051	8.6	47,131	2,618
NEWBURY	19		138	3,673	1,532	11.1	145,167	7,640
NEWCASTLE	18	2	127	3,241	1,236	9.7	82,836	4,602
NEWMARKET	38		270	8,737	2,869	10.6	337,831	8,890
NOTTINGHAM	19		138	3,929	1,496	10.8	30,857	1,624
PONTEFRACT	16		110	2,755	1,037	9.4	79,925	4,995
REDCAR	19		140	3,854	1,429	10.2	46,574	2,451
RIPON	15		102	2,265	999	9.8	79,299	5,287
SALISBURY	15		104	2,547	1,014	9.8	49,931	3,329
SANDOWN PARK	19		117	2,871	1,124	9.6	117,270	6,172
SOUTHWELL	60	1	399	6,257	3,332	8.4	51,954	866
THIRSK	14		100	2,581	1,071	10.7	57,507	4,108
WARWICK	11	1	77	2,308	751	9.8	18,945	1,722
WINDSOR	26		164	4,137	1,704	10.4	107,715	4,143
WOLVERHAMPTON	96	3	717	14,349	6,894	9.6	66,579	694
YARMOUTH	24		171	3,917	1,623	9.5	60,166	2,507
YORK	17		111	3,477	1,307	11.8	358,035	21,061
TOTAL	911	21	6,309	144,114	60,816	9.6	3,854,863	4,231

Notes

Mixed attendances are included with the Flat figures.

Racecourse Activities

2010

Flat

Notes

BATH

- a) 2 fixtures transferred from abandoned Chepstow fixtures
- b) 2 races abandoned (poor visibility)

BRIGHTON

- a) 1 fixture transferred from abandoned Chepstow fixture

KEMPTON PARK

- a) 3 additional fixtures

LINGFIELD PARK

- a) 7 additional fixtures (including 2 Mixed (AWT) fixtures), of which 2 were abandoned
- b) 1 Jump fixture converted to a Mixed (AWT) fixture

SOUTHWELL

- a) 5 additional fixtures (including 2 Mixed (AWT) fixtures)
- b) 1 AWT Flat fixture created to replace the abandoned Turf Jump fixture at Southwell on the same day
- c) 5 races abandoned (poor visibility)

WOLVERHAMPTON

- a) 1 additional fixture
- b) 3 additional races programmed
- c) 3 races permitted to divide to produce a 10-race card
- d) 4 races abandoned (frozen track)

Racecourse Activities

2010

Jump

Racecourse	Fixtures	Abandoned	Races	Entries	Runners	Ave Runners	Attendance	Ave Attendance
AINTREE	9		60	1,551	740	12.3	185,970	20,663
ASCOT	6	2	41	891	391	9.5	73,391	12,232
AYR	6	6	43	1,028	393	9.1	29,650	4,942
BANGOR-ON-DEE	16	2	108	2,578	935	8.7	41,999	2,625
CARLISLE	8	4	55	1,214	550	10.0	21,897	2,737
CARTMEL	7		48	1,025	403	8.4	71,918	10,274
CATTERICK BRIDGE	6	4	41	897	471	11.5	8,839	1,473
CHELTENHAM	17		111	3,694	1,455	13.1	417,886	24,582
CHEPSTOW	11	4	73	1,878	698	9.6	23,891	2,172
DONCASTER	5	4	36	1,138	420	11.7	14,725	2,945
EXETER	14	2	90	2,217	888	9.9	22,569	1,612
FAKENHAM	8	2	51	1,000	375	7.4	20,419	2,552
FFOS LAS	14	3	96	2,026	778	8.1	32,752	2,339
FOLKESTONE	5	4	33	698	275	8.3	5,672	1,134
FONTWELL PARK	20	4	138	3,011	1,177	8.5	56,688	2,834
HAYDOCK PARK	7	2	50	1,240	438	8.8	35,665	5,095
HEREFORD	10	4	68	1,896	717	10.5	15,741	1,574
HEXHAM	13	2	83	1,851	766	9.2	23,358	1,797
HUNTINGDON	16	3	106	2,724	1,036	9.8	27,822	1,739
KELSO	11	3	78	1,681	781	10.0	30,448	2,768
KEMPTON PARK	11	3	79	2,044	771	9.8	17,935	1,630
LEICESTER	5	7	31	682	266	8.6	3,682	736
LINGFIELD PARK	4	1	29	579	268	9.2	4,072	1,018
LUDLOW	11	5	77	1,729	733	9.5	18,607	1,692
MARKET RASEN	19	3	127	2,798	1,147	9.0	53,949	2,839
MUSSELBURGH	5	5	35	681	342	9.8	7,841	1,568
NEWBURY	11	1	77	1,997	812	10.5	75,988	6,908
NEWCASTLE	6	6	39	897	423	10.8	10,345	1,724
NEWTON ABBOT	17	1	110	2,721	1,032	9.4	45,625	2,684
PERTH	14		92	1,984	774	8.4	56,246	4,018
PLUMPTON	16	1	111	2,344	897	8.1	32,712	2,045
SANDOWN PARK	5	4	35	931	359	10.3	26,286	5,257
SEDGEFIELD	15	4	96	2,095	864	9.0	23,001	1,533
SOUTHWELL	16	2	112	2,859	1,058	9.4	25,351	1,584
STRATFORD-ON-AVON	18		117	2,737	1,110	9.5	49,832	2,768
TAUNTON	10	5	69	1,776	699	10.1	17,429	1,743
TOWCESTER	16	4	103	2,708	1,046	10.2	60,416	3,776
UTTOXETER	24	1	169	4,513	1,627	9.6	105,096	4,379
WARWICK	8	2	55	1,485	527	9.6	11,753	1,469
WETHERBY	12	5	83	1,844	796	9.6	41,905	3,492
WINCANTON	12	5	75	1,808	667	8.9	30,329	2,527
WORCESTER	17		127	3,240	1,304	10.3	34,818	2,048
TOTAL	481	120	3,257	78,690	31,209	9.6	1,914,518	3,980

Racecourse Activities

2010

Jump

Notes

AINTREE

- a) 1 additional NHF race programmed

ASCOT

- a) 1 additional NHF race programmed
- b) Long Walk Hurdle Race re-scheduled at Newbury

AYR

- a) 1 additional fixture

BANGOR-ON-DEE

- a) 1 additional fixture

CHELTENHAM

- a) Cross-Country Chase abandoned (frozen track)
- b) Tingle Creek Steeple Chase transferred from Sandown Park

CHEPSTOW

- a) 1 additional fixture
- b) 1 fixture re-scheduled for Jan 8th, 2011

DONCASTER

- a) 1 additional hurdle race programmed

FONTWELL PARK

- a) 1 provisional fixture added and then abandoned

HUNTINGDON

- a) Peterborough Chase transferred to Newbury

KEMPTON PARK

- a) 1 additional AWT Bumpers For Jumpers fixture
- b) 1 additional hurdle race programmed as a replacement for Wincanton's Kingwell Hurdle
- c) King George VI Chase and Christmas Hurdle re-scheduled for Jan 15th, 2011

LINGFIELD PARK

- a) 1 Jump fixture converted to a Mixed (AWT) fixture

MUSSELBURGH

- a) 1 additional fixture (which was abandoned)

NEWBURY

- a) Peterborough Chase transferred from Huntingdon
- b) Long Walk Hurdle Race re-scheduled from Ascot
- c) Fighting Fifth Hurdle transferred from Newcastle

NEWCASTLE

- a) 1 additional fixture
- b) Fighting Fifth Hurdle transferred to Newbury

PLUMPTON

- a) 1 additional fixture

SANDOWN PARK

- a) Tingle Creek Steeple Chase transferred to Cheltenham

SOUTHWELL

- a) 1 additional AWT Bumpers fixture
- b) 2 additional AWT Bumpers For Jumpers fixtures
- c) 1 Turf Jump fixture abandoned and replaced by an AWT Flat fixture

Racecourse Activities

2010

All Racing

Racecourse	Fixtures	Abandoned	Races	Entries	Runners	Ave Runners	Attendance	Ave Attendance
AINTREE	9		60	1,551	740	12.3	185,970	20,663
ASCOT	23	2	148	4,170	1,675	11.3	558,718	24,292
AYR	22	6	162	3,798	1,563	9.6	92,843	4,220
BANGOR-ON-DEE	16	2	108	2,578	935	8.7	41,999	2,625
BATH	22		151	3,241	1,351	8.9	56,080	2,549
BEVERLEY	20		139	3,053	1,363	9.8	87,372	4,369
BRIGHTON	23		149	2,840	1,252	8.4	34,739	1,510
CARLISLE	18	4	124	2,860	1,217	9.8	65,239	3,624
CARTMEL	7		48	1,025	403	8.4	71,918	10,274
CATTERICK BRIDGE	24	4	168	3,595	1,708	10.2	40,410	1,684
CHELTENHAM	17		111	3,694	1,455	13.1	417,886	24,582
CHEPSTOW	22	8	143	3,481	1,415	9.9	51,693	2,350
CHESTER	13		89	1,961	787	8.8	271,563	20,889
DONCASTER	29	4	196	6,013	2,213	11.3	197,644	6,815
EPSOM DOWNS	15		94	2,193	768	8.2	129,809	8,654
EXETER	14	2	90	2,217	888	9.9	22,569	1,612
FAKENHAM	8	2	51	1,000	375	7.4	20,419	2,552
FFOS LAS	25	3	160	3,196	1,222	7.6	59,043	2,362
FOLKESTONE	18	4	116	2,378	910	7.8	28,207	1,567
FONTWELL PARK	20	4	138	3,011	1,177	8.5	56,688	2,834
GOODWOOD	22	1	152	3,634	1,496	9.8	213,545	9,707
HAMILTON PARK	18		118	2,336	954	8.1	48,308	2,684
HAYDOCK PARK	30	2	197	5,350	1,856	9.4	192,686	6,423
HEREFORD	10	4	68	1,896	717	10.5	15,741	1,574
HEXHAM	13	2	83	1,851	766	9.2	23,358	1,797
HUNTINGDON	16	3	106	2,724	1,036	9.8	27,822	1,739
KELSO	11	3	78	1,681	781	10.0	30,448	2,768
KEMPTON PARK	96	6	701	14,527	6,946	9.9	108,837	1,134
LEICESTER	25	7	167	4,433	1,545	9.3	32,818	1,313
LINGFIELD PARK	90	7	635	12,183	5,825	9.2	119,758	1,331
LUDLOW	11	5	77	1,729	733	9.5	18,607	1,692
MARKET RASEN	19	3	127	2,798	1,147	9.0	53,949	2,839
MUSSELBURGH	23	5	157	2,970	1,393	8.9	54,972	2,390
NEWBURY	30	1	215	5,670	2,344	10.9	221,155	7,372
NEWCASTLE	24	8	166	4,138	1,659	10.0	93,181	3,883
NEWMARKET	38		270	8,737	2,869	10.6	337,831	8,890
NEWTON ABBOT	17	1	110	2,721	1,032	9.4	45,625	2,684
NOTTINGHAM	19		138	3,929	1,496	10.8	30,857	1,624
PERTH	14		92	1,984	774	8.4	56,246	4,018
PLUMPTON	16	1	111	2,344	897	8.1	32,712	2,045
PONTEFRACT	16		110	2,755	1,037	9.4	79,925	4,995
REDCAR	19		140	3,854	1,429	10.2	46,574	2,451
RIPON	15		102	2,265	999	9.8	79,299	5,287
SALISBURY	15		104	2,547	1,014	9.8	49,931	3,329
SANDOWN PARK	24	4	152	3,802	1,483	9.8	143,556	5,982
SEDGEFIELD	15	4	96	2,095	864	9.0	23,001	1,533
SOUTHWELL	76	3	511	9,116	4,390	8.6	77,305	1,017
STRATFORD-ON-AVON	18		117	2,737	1,110	9.5	49,832	2,768
TAUNTON	10	5	69	1,776	699	10.1	17,429	1,743
THIRSK	14		100	2,581	1,071	10.7	57,507	4,108
TOWCESTER	16	4	103	2,708	1,046	10.2	60,416	3,776
UTTOXETER	24	1	169	4,513	1,627	9.6	105,096	4,379
WARWICK	19	3	132	3,793	1,278	9.7	30,698	1,616
WETHERBY	12	5	83	1,844	796	9.6	41,905	3,492
WINCANTON	12	5	75	1,808	667	8.9	30,329	2,527
WINDSOR	26		164	4,137	1,704	10.4	107,715	4,143
WOLVERHAMPTON	96	3	717	14,349	6,894	9.6	66,579	694
WORCESTER	17		127	3,240	1,304	10.3	34,818	2,048
YARMOUTH	24		171	3,917	1,623	9.5	60,166	2,507
YORK	17		111	3,477	1,307	11.8	358,035	21,061
TOTAL	1,392	141	9,566	222,804	92,025	9.6	5,769,381	4,145

Notes

Mixed attendances are included with the Flat figures.

Racecourse Activities

2010

All Racing

Notes

AINTREE

- a) 1 additional NHF race programmed

ASCOT

- a) 1 additional NHF race programmed
- b) Long Walk Hurdle Race re-scheduled at Newbury

AYR

- a) 1 additional Jump fixture

BANGOR-ON-DEE

- a) 1 additional fixture

BATH

- a) 2 fixtures transferred from abandoned Chepstow fixtures
- b) 2 races abandoned (poor visibility)

BRIGHTON

- a) 1 fixture transferred from abandoned Chepstow fixture

CHELTENHAM

- a) Cross-Country Chase abandoned (frozen track)
- b) Tingle Creek Steeple Chase transferred from Sandown Park

CHEPSTOW

- a) 1 additional Jump fixture
- b) 1 Jump fixture re-scheduled for Jan 8th, 2011

DONCASTER

- a) 1 additional hurdle race programmed

FONTWELL PARK

- a) 1 provisional fixture added and then abandoned

HUNTINGDON

- a) Peterborough Chase transferred to Newbury

KEMPTON PARK

- a) 3 additional Flat fixtures
- b) 1 additional AWT Bumpers For Jumpers fixture
- c) 1 additional hurdle race programmed as a replacement for Wincanton's Kingwell Hurdle
- d) King George VI Chase and Christmas Hurdle re-scheduled for Jan 15th, 2011

LINGFIELD PARK

- a) 7 additional Flat fixtures (including 2 Mixed (AWT) fixtures), of which 2 were abandoned
- b) 1 Jump fixture converted to a Mixed (AWT) fixture

MUSSELBURGH

- a) 1 additional Jump fixture (which was abandoned)

NEWBURY

- a) Peterborough Chase transferred from Huntingdon
- b) Long Walk Hurdle Race re-scheduled from Ascot
- c) Fighting Fifth Hurdle transferred from Newcastle

NEWCASTLE

- a) 1 additional Jump fixture
- b) Fighting Fifth Hurdle transferred to Newbury

PLUMPTON

- a) 1 additional fixture

SANDOWN PARK

- a) Tingle Creek Steeple Chase transferred to Cheltenham

SOUTHWELL

- a) 5 additional Flat fixtures (including 2 Mixed (AWT) fixtures)
- b) 1 AWT Flat fixture created to replace the abandoned Turf Jump fixture at Southwell on the same day
- c) 5 Flat races abandoned (poor visibility)
- d) 1 additional AWT Bumpers fixture
- e) 2 additional AWT Bumpers For Jumpers fixtures
- f) 1 Turf Jump fixture abandoned and replaced by an AWT Flat fixture

WOLVERHAMPTON

- a) 1 additional Flat fixture
- b) 3 additional Flat races programmed
- c) 3 Flat races permitted to divide to produce a 10-race card
- d) 4 Flat races abandoned (frozen track)

Racecourse Activities

Monthly Attendance Figures

	2006			2007			2008			2009			2010		
	Flat	Jump	Total	Flat	Jump	Total	Flat	Jump	Total	Flat	Jump	Total	Flat	Jump	Total
JAN	25,576	128,522	154,098	30,708	120,416	151,124	35,344	121,924	157,268	31,599	123,009	154,608	31,532	95,003	126,535
FEB	25,406	119,640	145,046	24,364	118,464	142,828	33,218	136,404	169,622	23,305	115,061	138,366	28,317	110,814	139,131
MAR	45,366	346,468	391,834	35,564	389,144	424,708	54,198	341,119	395,317	42,029	365,109	407,138	35,680	377,607	413,287
APR	175,395	330,139	505,534	171,154	338,733	509,887	155,151	317,817	472,968	167,386	329,362	496,748	185,652	347,279	532,931
MAY	427,962	184,242	612,204	448,223	180,665	628,888	517,287	179,763	697,050	495,093	183,405	678,498	527,770	182,474	710,244
JUN	792,093	88,632	880,725	798,890	81,218	880,108	841,041	107,690	948,731	786,909	92,193	879,102	794,778	93,623	888,401
JUL	786,976	92,503	879,479	656,179	72,225	728,404	774,801	83,769	858,570	818,725	80,523	899,248	913,245	77,201	990,446
AUG	749,445	102,252	851,697	736,578	80,947	817,525	617,851	84,313	702,164	680,241	95,133	775,374	677,035	107,449	784,484
SEP	391,026	63,144	454,170	440,621	66,162	506,783	336,992	48,610	385,602	362,384	57,354	419,738	390,517	51,857	442,374
OCT	167,680	177,970	345,650	223,019	139,598	362,617	183,362	138,204	321,566	201,433	158,065	359,498	196,349	167,877	364,226
NOV	41,050	274,246	315,296	59,765	261,555	321,320	54,180	264,446	318,626	35,845	257,510	293,355	38,309	241,800	280,109
DEC	52,863	284,950	337,813	46,062	300,315	346,377	51,724	237,448	289,172	39,346	179,757	219,103	35,679	61,534	97,213
TOTAL	3,680,838	2,192,708	5,873,546	3,671,127	2,149,442	5,820,569	3,655,149	2,061,507	5,716,656	3,684,295	2,036,481	5,720,776	3,854,863	1,914,518	5,769,381

Notes

Mixed attendances are included with the Flat figures.

Racecourse Activities

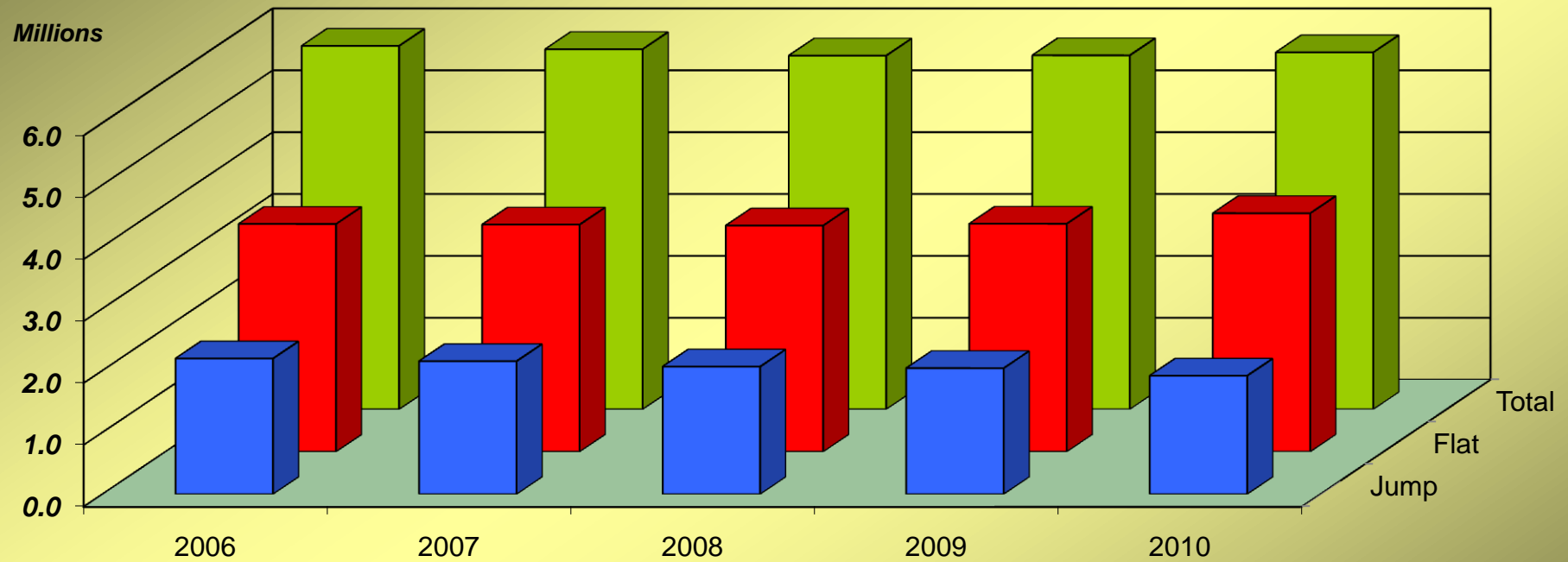
Daily Spread of Public Attendances

	2006			2007			2008			2009			2010		
	Flat	Jump	Total	Flat	Jump	Total	Flat	Jump	Total	Flat	Jump	Total	Flat	Jump	Total
MON	236,006	70,586	306,592	224,089	81,453	305,542	213,377	84,054	297,431	193,477	72,995	266,472	199,861	70,884	270,745
TUE	279,515	174,759	454,274	253,092	149,933	403,025	223,605	153,416	377,021	227,120	154,256	381,376	221,610	153,636	375,246
WED	398,007	246,603	644,610	410,382	202,182	612,564	329,828	152,823	482,651	354,446	178,600	533,046	352,848	198,001	550,849
THU	434,783	263,150	697,933	450,450	263,215	713,665	452,677	263,798	716,475	430,195	248,173	678,368	482,163	242,218	724,381
FRI	707,430	352,772	1,060,202	711,109	346,662	1,057,771	778,197	376,597	1,154,794	720,044	362,985	1,083,029	777,436	330,261	1,107,697
SAT	1,267,874	608,839	1,876,713	1,260,675	632,195	1,892,870	1,337,189	613,730	1,950,919	1,377,363	616,605	1,993,968	1,456,742	535,369	1,992,111
SUN	271,944	332,934	604,878	283,121	313,711	596,832	267,788	273,991	541,779	289,419	311,264	600,683	276,011	293,513	569,524
B/HOL	85,279	143,065	228,344	78,209	160,091	238,300	52,488	143,098	195,586	92,231	91,603	183,834	88,192	90,636	178,828
TOTAL	3,680,838	2,192,708	5,873,546	3,671,127	2,149,442	5,820,569	3,655,149	2,061,507	5,716,656	3,684,295	2,036,481	5,720,776	3,854,863	1,914,518	5,769,381

Notes

Mixed attendances are included with the Flat figures.

Racecourse Attendances



SECTION F

HORSERACE BETTING AND LEVY

TABLE 1

Levy Board Income and Expenditure (Financial Years)

The Levy and Levy Board Income

The total Horserace Betting Levy Board income in the last 5 financial years broken down into:

- a) From Bookmakers
- b) From Totalisator Board (tote)
- c) Other Levy Board Income (Net Interest)
- d) Other Contributions
- e) Total Income

Allocation of Levy: Levy Board Expenditure

An analysis of the expenditure of the Horserace Betting Levy Board.

Betting and Levy Board Statistics

Levy Board Income and Expenditure - Financial Years ^(a)

	2005-2006 £ Thousand	2006-2007 £ Thousand	2007-2008 £ Thousand	2008-2009 £ Thousand	2009-2010 £ Thousand
THE LEVY AND LEVY BOARD INCOME					
Bookmakers	88,917	91,642	107,300	82,867	66,928
Totalisator Board (tote)	8,196	8,732	9,200	8,779	7,553
Other Levy Board Income ^(b)	1,735	1,292	1,446	1,832	855
Other Contributions				1,352	0
TOTAL INCOME	98,848	101,666	117,946	94,830	75,336
ALLOCATION OF LEVY: LEVY BOARD EXPENDITURE					
Prize Money	64,019	65,394	56,647	59,418	64,000
Integrity Services	18,214	24,013	35,529	24,978	25,342
Racecourses	9,614	8,825	7,877	6,958	6,638
Training	874	902	964	973	1,225
Other Improvement of Horseracing	-161	-450	2,740	1,220	1,135
Assistance To Breeding	3,952	1,682	1,845	1,917	2,056
Veterinary Science and Education	3,178	2,214	2,364	2,633	2,055
Levy Board Administration	3,606	3,372	3,631	3,614	3,153
Bookmakers' Committee	211	200	253	264	261
TOTAL EXPENDITURE	103,507	106,152	111,850	101,975	105,865

Source: Levy Board Annual Reports

Notes

(a) Financial year April 1st to March 31st Levy Period

(b) Net Interest

SECTION G

POINT TO POINT RACING

TABLE 1

Fixture Statistics

An analysis of the number of Courses, Meetings, Abandonments, Postponements and Re-Arrangements each season for the last 5 seasons. A breakdown of courses by number of fixtures held is also shown.

TABLE 2

Point to Point Horse and Race Statistics

Point to Point by Race Type

An analysis of the Number of Races, Number of Runners and Average Number of Runners per Race for each type of Race.

All Races

Totals for the season of:

- a) Number of Registered Hunters' Certificates
- b) Number of Races Run
- c) Number of Entries
- d) Number of Runners
- e) Average Number of Runners per Race

Point to Point Racing

Number of Courses, Meetings and Abandonments

	2006	2006/7	2007/8	2008/9	2009/10
No. of Scheduled Meetings	211	213	213	212	213
No. of Actual Meetings	198	200	209	205	194
No. of Meetings Abandoned	11	13	4	7	19
No. of Meetings Postponed	11	5	11	11	16
No. of Meetings Re-Arranged	3	2	1	5	5
No. of Mid-Week Fixtures (exc. Bank Holidays)	3	4	4	4	2
Duration of Season in Weeks	24	28	28	28	28
Total No. of Courses	119	117	117	117	118
No. of Courses with 1 Fixture	60	62	59	57	58
No. of Courses with 2 Fixtures	37	39	40	36	38
No. of Courses with 3 Fixtures	15	11	14	17	14
No. of Courses with 4 Fixtures	5	7	5	5	5
No. of Courses with 5 or more Fixtures	2	2	2	2	3

Notes

Figures for 2006 do not include fixtures held in December 2006. These fixtures are included in statistics for the 2006/7 season.

Point to Point Racing

Number of Races and Runners by Type of Race

2009/10

Type of Race	No. of Races	No. of Runners	Average No. of Runners Per Race
Club Members	156	1,221	7.8
Hunt Members	133	589	4.4
Confined	84	675	8.0
Intermediate	82	571	7.0
Ladies Open	136	873	6.4
Mens Open	137	870	6.4
Mixed Open	56	408	7.3
Club Members Maiden	3	26	8.7
Confined Maiden	7	74	10.6
Open Maiden	294	2,988	10.2
2m4f/2m5f Maiden	89	917	10.3
Restricted	182	1,703	9.4

No. of Registered Hunters' Certificates:	3,705
Total No. of Races:	1,359
Total No. of Entries *	28,305
Total No. of Runners:	10,915
Average No. of Runners per Race:	8.0

* Including Entries for Abandoned Meetings

SECTION H

STABLE EMPLOYEES

TABLE 1

1. Total Number of Persons on File
2. Number in Full Time Current Employment with Licensed Trainers
3. Number in Full Time Current Employment with Permitted Trainers
4. Total Number in Full Time Current Employment
5. Number in Part Time Current Employment with Licensed Trainers
6. Number in Part Time Current Employment with Permitted Trainers
7. Total Number in Part Time Current Employment

MALE AND FEMALE ARE SHOWN SEPARATELY

These figures exclude those people who are registered as Self-Employed.

TABLE 2

Totals by Job Category

The number of Stable Employees broken down by type of job.

MALE AND FEMALE ARE SHOWN SEPARATELY

TABLE 3

Totals by Age Group

The number of Stable Employees broken down by age group.

Stable Employees

Number of People Employed Full and Part Time With Licensed and Permitted Trainers

	2006		2007		2008		2009		2010	
	Male	Female	Male	Female	Male	Female	Male	Female	Male	Female
Total on File	3,563	3,089	3,667	3,103	4,027	3,133	4,066	2,978	4,036	2,863
Employed Full Time - with Licensed Trainers	2,518	1,691	2,619	1,729	3,081	1,777	3,089	1,661	3,075	1,594
Employed Full Time - with Permitted Trainers	29	56	30	45	27	31	25	39	25	40
Employed Full Time - TOTAL	2,547	1,747	2,649	1,774	3,108	1,808	3,114	1,700	3,100	1,634
Employed Part Time - with Licensed Trainers	901	1,189	923	1,192	856	1,223	883	1,155	858	1,112
Employed Part Time - with Permitted Trainers	115	153	95	137	63	102	69	123	78	117
Employed Part Time - TOTAL	1,016	1,342	1,018	1,329	919	1,325	952	1,278	936	1,229

Notes

The above figures exclude those people registered as Self-Employed.

Stable Employees

Distribution by Category of Job

	2006		2007		2008		2009		2010	
	Male	Female	Male	Female	Male	Female	Male	Female	Male	Female
Assistant Trainer	288	274	286	259	276	248	277	249	272	246
Head Lad	197	94	195	106	217	101	216	103	207	96
Travelling Head Lad	169	74	171	91	164	94	167	87	151	87
Stable Lad/Lass	1,625	1,683	1,714	1,616	1,965	1,594	1,976	1,497	1,886	1,412
Trainee Stable Lad/Lass	77	96	66	97	61	88	45	81	56	71
Apprentice/Conditional Jockey	208	31	160	21	159	27	141	27	143	32
Box Driver	168	24	174	23	158	32	156	25	116	43
Secretary	30	311	30	304	29	319	31	295	29	290
Pupil Under Training	98	83	85	91	82	94	68	84	66	68
Work Rider	391	385	426	437	532	441	617	459	697	448
Gallopman	71	0	72	2	71	1	64	4	61	4
Yardman	347	101	363	100	343	108	316	94	310	98
Feedman	9	6	7	3	6	4	6	5	6	6
Hackman	5	14	7	11	9	12	10	11	10	13
Blacksmith	36	1	36	1	39	1	39	1	41	1
Hostel Employee	2	20	2	20	2	5	16	15	6	7
Other Duties	276	235	288	260	354	312	362	308	360	291
TOTAL	3,997	3,432	4,082	3,442	4,467	3,481	4,507	3,345	4,417	3,213

Stable Employees
Distribution by Age Group

	2006	2007	2008	2009	2010
16 and under	149	157	133	122	118
17	205	200	212	176	163
18	216	253	251	244	201
19	216	233	246	238	250
20-24	1,382	1,327	1,320	1,245	1,166
25-29	1,121	1,118	1,242	1,236	1,172
30-34	759	816	917	947	952
35-39	775	768	854	822	774
40-44	701	698	764	788	738
45-49	565	605	624	625	682
50-54	447	432	485	491	475
55-59	331	319	326	335	354
60-64	271	273	241	249	255
65 and over	291	325	333	334	330
TOTAL	7,429	7,524	7,948	7,852	7,630